



OVERVIEW

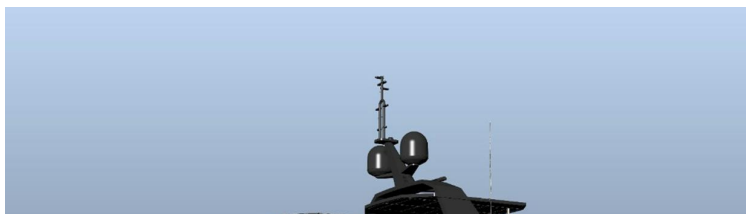
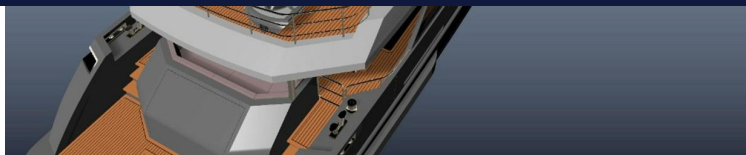


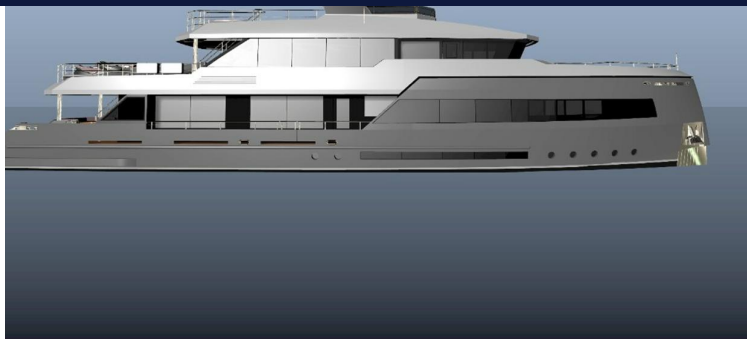
|               |                 |            |                       |
|---------------|-----------------|------------|-----------------------|
| TYPE          | Motor           | DESIGNER   | TBD                   |
| LENGTH        | 115' (35.05m)   | SPEED      | 10 Knots              |
| BEAM          | 24' 10" (7.57m) | ENGINES    | 2x, Caterpillar, C18, |
| DRAFT         | 7' 10" (2.39m)  | RANGE      | 4000                  |
| BUILDER       | INACE           | FLAG       | N/A                   |
| HULL MATERIAL | Steel           | TAXES PAID | No Duty Paid          |

ASKING PRICE POA

TJB SUPER YACHTS LTD SVC ACCOUNT M: T: E: INFO120120220343@TJB-SUPER-YACHTS-LTD.COM

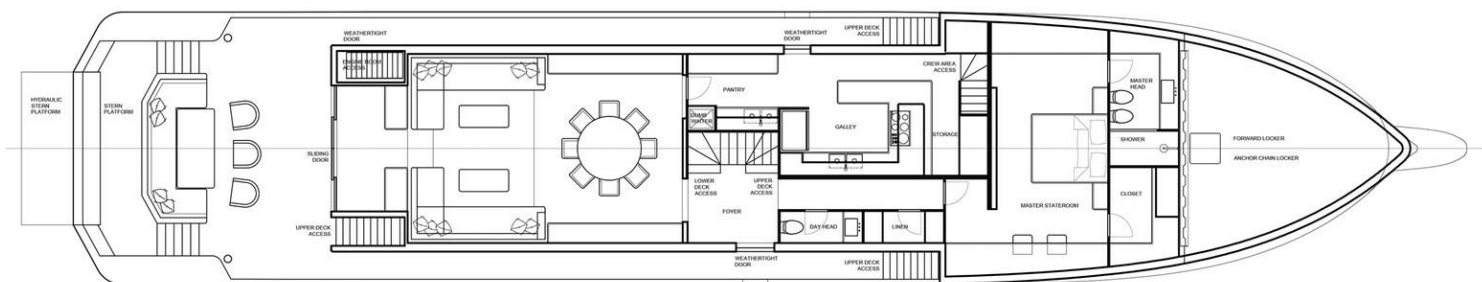




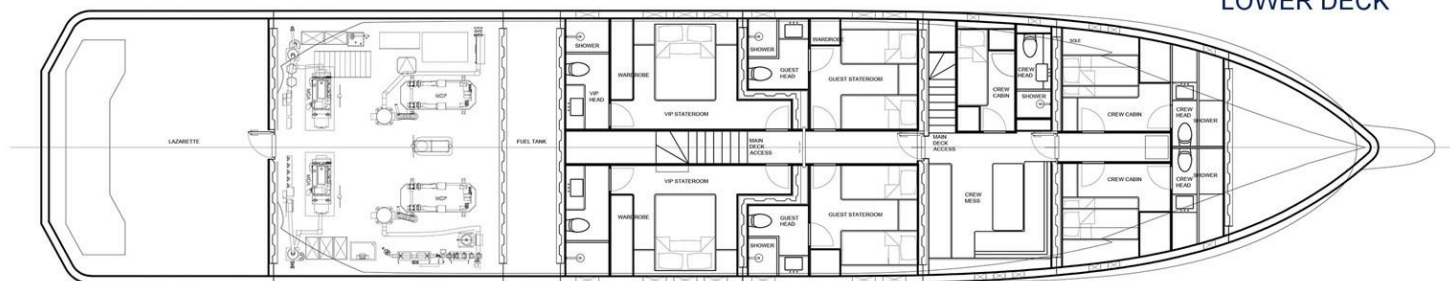




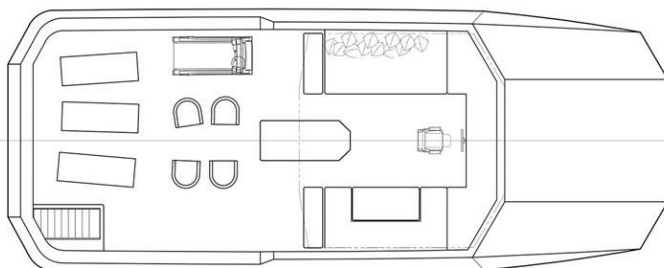
MAIN DECK



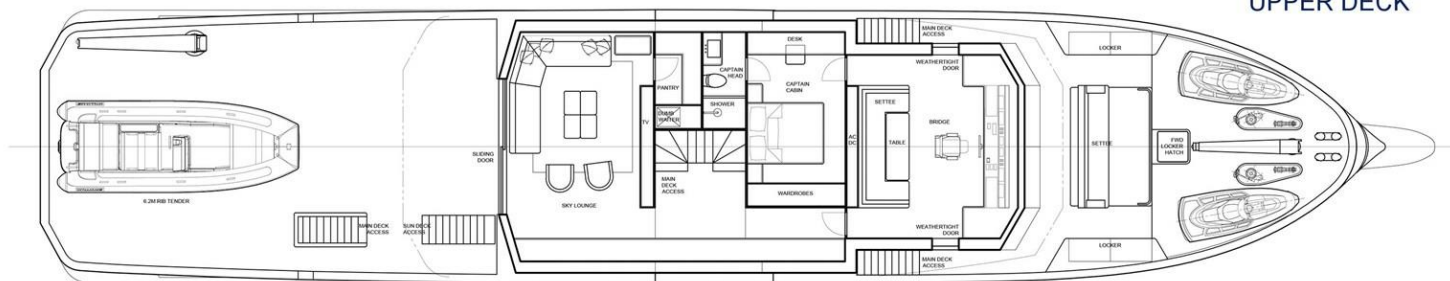
LOWER DECK



SUN DECK



UPPER DECK



## DETAILED SPECIFICATIONS

### MAIN CHARACTERISTICS

|                        |   |
|------------------------|---|
| TYPE                   | MOTOR                                     |
| COUNTRY OF REGISTRY    | N/A                                       |
| PORT OF REGISTRY BUILT | 2025                                      |
| REFIT                  | N/A                                       |
| BUILDER                | INACE                                     |
| NAVAL ARCHITECH        | N/A                                       |
| EXTERIOR DESIGNER      | FERNANDO DE ALMEIDA                       |
| INTERIOR DESIGNER      | TBD                                       |
| LWL                    | 115' (35.05M)                             |
| BEAM                   | 24' 10" (7.57M)                           |
| MAX DRAFT              | 7' 10" (2.39M)                            |
| CLASSIFICATION:        | RINA CLASSIFICATION                       |
| CLASSIFICATION:        | MALTESE CROSS 100-A1.1 "Y" CLASSIFICATION |
| CONSTRUCTION           | N/A                                       |
| HELIDECKS/HANGER       | N/A                                       |

### Disclaimer

The company offers the details of this vessel in good faith but cannot guarantee or warrant the accuracy of this information nor warrant the condition of the vessel. A buyer should instruct their agents, or their surveyors, to investigate such details as the buyer desires validated. This vessel is offered subject to prior sale, price change, withdrawal without notice, and tax when applicable.





# INACE Explora 115



# INACE Explora 115

+44 (0) 207 183 4393 • [ENQUIRIES@TJBSUPERYACHTS.COM](mailto:ENQUIRIES@TJBSUPERYACHTS.COM)

24.11 CODA STUDIOS, 189 MUNSTER ROAD, FULHAM, LONDON, SW6 6AW, UK