



Type	Motor Yacht Sky Lounge	Classification	--
Top	Enclosed Pilothouse	Class Type	--
Model	Skylounge	Builder	JOHNSON
Manuf. Year	2027	Naval Architect	Dixon Yacht Design
Refit Year	--	Interior Design	Design Unlimited, England
LOA	70' 5" (21.46m)	Hull	Fiberglass
Beam	18' 4" (5.59m)	Deck	Teak
Draft Min/Max	3' 4" (1.02m) / 3' 5" (1.04m)	Engines	2x, Caterpillar, C-18A, 1150 HP
GRT	--	Max Speed	25 Knots
Fuel	1096 Gal	Cruise Speed	22 Knots
Water	260 Gal	Range	--
Flag	--	Accommodations	8 in 4 strms 1 crew

ASKING PRICE: **\$4,400,000 USD**

Salon looking aft



Galley area



Master looking aft



Master looking to port



Master Head



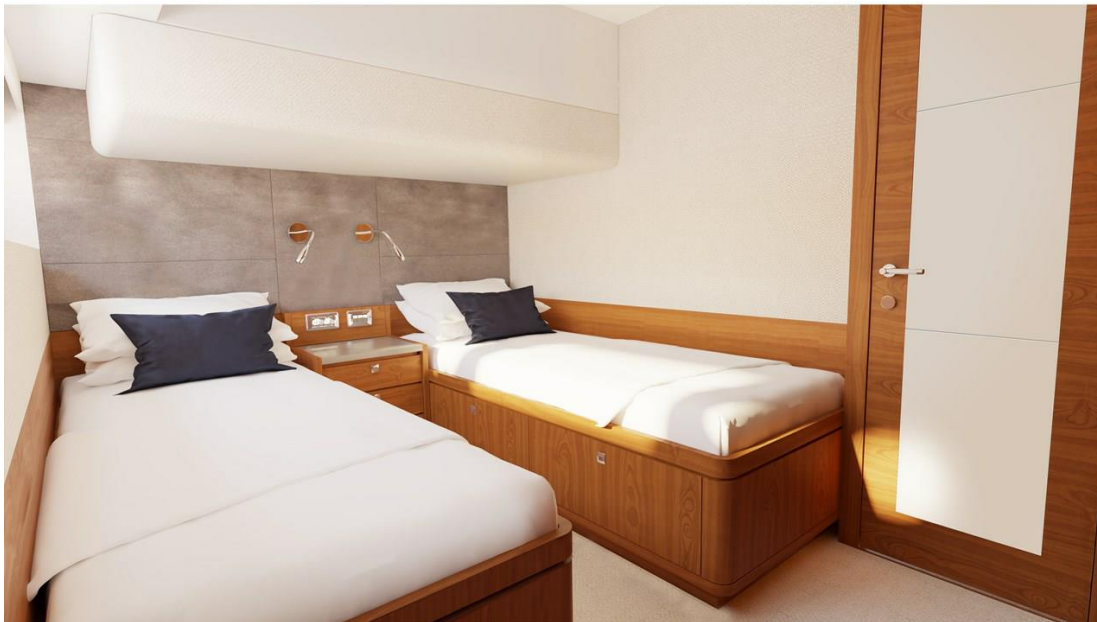
Port twin cabin



Port side head



Starboard twin cabin



Forward VIP



JOHNSON 70 Profile



Upgraded bow seating



Bow quarter



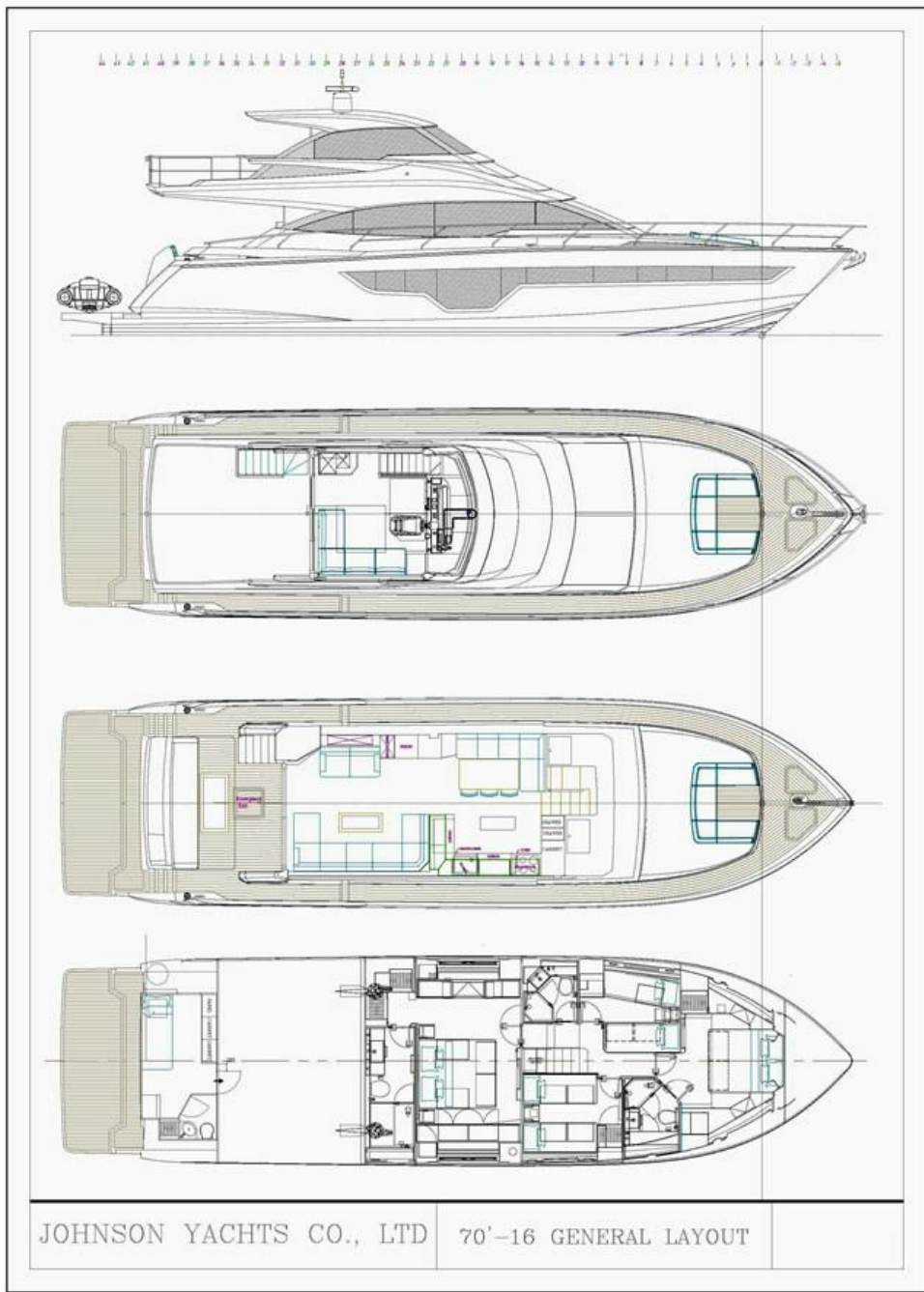
JOHNSON 70 Alternate profile



JOHNSON 70 View from above



Johnson 70 Skylounge GA



JOHNSON YACHTS CO., LTD 70'-16 GENERAL LAYOUT

I. HULL & DECK – EXTERIOR GENERAL:

1. MAIN DECK-TEAK
2. STAINLESS STEEL INTEGRAL ROLLERS & CHAIN STOPPER FOR ANCHOR CHAIN
3. 250 FEET GALVANIZED CHAIN (3/8")
4. MAXWELL HYDRAULIC RC12-12 WINDLASS
5. STAINLESS STEEL 120 LB ANCHOR (SINGLE)
6. HEAVY DUTY 316# S/S HANDRAIL & STANCHIONS
7. HEAVY DUTY 316# S/S CLEATS AND FAIRLEADS
8. MEDIUM TINTED SAFETY GLASS
9. PNEUMATIC STAINLESS STEEL SALOON SLIDING DOOR WITH PUSH BUTTON AND SAFETY SENSORS
10. STAINLESS STEEL PORT LIGHTS
11. S/S RUB RAIL W/RUBBER INSERT AROUND HULL & DECK JOINT
12. STERN CAPSTAN 24V x 2 SETS - MAXWELL VC2500
13. AFT DECK SEATING BUILT IN WITH CUSHIONS
14. AFT DECK TABLE
15. LED LOW LEVEL COURTESY LIGHTS ON SIDE DECK
16. LED LOW LEVEL COURTESY LIGHTS ON AFT DECK
17. STAIRS TO FLYBRIDGE
18. LARGE TEAK INLAY SWIM PLATFORM WITH STAIRWAY TO AFT DECK
19. HOT & COLD TRANSOM SHOWER

20. S/S SWIM LADDER

21. SUN BATHING/SEATING AREA IN FWD DECK

22. WATER FILL DECK FITTING

23. DIESEL FILL DECK FITTING

24. FLOJET 4325-343L DECK WASHDOWN PUMP

25. FLOODLIGHT FOR COCKPIT - LED

26. CANVAS COVERS FOR EXTERIOR SETTEE AND TABLES

27. WATER RESISTANT SUN PAD ON BOW WITH U-SHAPED SEATING

28. WHITE GEL COAT THROUGHOUT HULL

II. UNDERWATER GEAR:

1. 5 BLADE BRONZE PROPELLERS

2. BRONZE P-BRACKETS

3. S/S AQUATECH 22HS SHAFTS

4. SHAFT SEAL AND SHAFT LOG - TIDES RUDDER SEAL 3"; TIDES SHAFT SEAL 3"

5. ANTI-FOULING BOTTOM PAINT

SEA HAWK PRIMER SYSTEMS TUFF STUFF 1284 GREY OR 1285 WHITE

SEA HAWK SELF-POLISHING COPOLYMER ANTIFOULING CUKOTE 3445 BLACK

OR 3430 DARK BLUE

6. BOOT TOP STRIPE SIZE 3" COLOR BLACK, BLUE OR RED

7. HUMPHREE INTERCEPTOR TRIM TABS H750 x 2

8. FULL CATHODIC BONDING SYSTEM TO ZINC ANODES

9. SEAWATER STRAINERS FOR ENGINES, GENSET AND AIR-CONDITIONING

10. SEACOCKS ON ALL UNDERWATER FITTINGS

11. UNDERWATER EXHAUST SYSTEM

III. SKYLounge:

1. FLOOR

HELM AREA: TEAK

LOUNGE AREA: CARPET

2. INSTRUMENT CONSOLE

3. LEATHER SOFA & COFFEE TABLE

4. U-LINE COMBO REFRIGERATOR/ICE MAKER

5. GARMIN

GPSMAP® 8617 FULLY-INTEGRATED MULTI-TOUCH MFD x 2

GMI 20 MARINE INSTRUMENT DISPLAY x 1

GMR FANTOM™ 4"/40W/72NM, SOLID-STATE, OPEN-ARRAY RADAR X 1

GARMIN VHF 210 MARINE RADIO x 1

GARMIN AIS 600 CLASS B TRANSCEIVER x 1

GHP™ 20 MARINE AUTOPILOT SYSTEM WITH SMARTPUMP x 1

GARMIN GSD 25 MARINE NETWORK SOUNDER 2KW x 1

6. RUDDER INDICATOR

7. MAGNETIC COMPASS

8. S/S GUARD RAILS AND GRAB RAILS

9. SPEICH NAUTIC TYPE LP WIPERS x 2

10. LOW LEVEL COURTESY LIGHTS 24V

11. SEARCH LIGHT - PAR 60010-2024 24V

12. AIR HORN - BUELL

13. BESENZONI P217 24V HELM SEAT x 2

14. S/S STEERING WHEEL

15. POP-UP TV CABINET WITH VIZIO M322I-B1 32" 1080P LED LCD HDTV

16. FUSION STEREO SYSTEM

SKYLOUNGE

MS-AV700I DVD / RECEIVER – WITH FUSION LINK.

MS-CL602 6" MARINE CEILING MOUNT SPEAKERS x 2

MS-BT200 BLUETOOTH ADAPTER MODULE FOR SIRIUS PORT

FLYBRIDGE AFT

MS-RA205 RECEIVER / MEDIA PLAYER WITH FULL IPOD / IPHONE CONTROL

MS-FR7021 7" 260 WATT SPEAKERS x 3 GRILLES INCL.

MS-BT200 BLUETOOTH ADAPTER MODULE FOR SIRIUS PORT

17. APPLE TV

18. CCTV SYSTEM WITH 4 CAMERAS

(ENGINE ROOM, SALOON DOOR, AFT DECK PORT & STBD)

19. ONE SHIP-SET LED NAVIGATION LIGHTS

IV. ENGINE PROPULSION & ENGINE ROOM EQUIPMENT:

1. TWIN CATERPILLAR C-18 ACERT 1150HP ENGINES WITH ZF 550IV GEAR BOXES

2. ENGINE DUAL RACOR FILTERS

3. GENERATOR RACOR FILTER

4. SOUNDPROOFING THROUGHOUT ENGINE ROOM

5. WELL PLANNED, SPACIOUS E/R WITH DIAMOND PATTERN DECK PLATES

6. FUEL TANKS WITH BEP ELECTRIC SENDING UNITS

7. AUTOMATIC SEA-FIRE FIRE EXTINGUISHER

8. ENGINE ROOM AIR INTAKE SYSTEM

9. ENGINE ROOM AC FLUORESCENT LIGHTS & DC DOME LIGHTS

10. HENDERSON BP0510 MANUAL BILGE PUMP

11. HIGH VOLUME AC F.W. PRESSURE PUMP AND ONE 24V DC PUMP FOR BACK UP

12. CHILLED WATER AIR CONDITIONING -
CRUISAIR AIR CONDITIONING W/48000 BTU COMPRESSOR x 2
13. SEA RECOVERY 700GPD WATER MAKER x 1
14. OIL CHANGING PUMP FOR ENGINES, GENERATOR AND CLUTCHES
15. GENERATOR - ONAN MDKDS 29KW 60HZ x 1
16. WATER HEATERS - SEAWARD HF2250 20 GALLONS x 2
17. 600 GPD HEADHUNTER SEWAGE TREATMENT SYSTEM

V. ELECTRICAL:

1. 110V/220 AC ELECTRICAL SYSTEM
2. DC 24V SYSTEM
3. 70' GLENDINNING CABLE MASTER CM7 50A x 2
4. BATTERY CHARGER FOR 24V CIRCUIT
5. BATTERY CHARGER FOR 12V CIRCUIT
6. ALTERNATOR SPLIT CHARGING SYSTEM
7. 255AMP/HR GELL CELL SEALED BATTERIES FOR SHIP SERVICE x 4
8. 255AMP/HR GELL CELL SEALED BATTERIES FOR ENGINES x 4
9. 210AMP/HR GELL CELL SEALED BATTERIES FOR GENSET x 1
10. AC SOCKETS THROUGHOUT THE BOAT
11. GFI PROTECTION FOR AC REQUIRED SOCKETS
12. BATTERY SELECTOR SWITCH
13. MAIN ELECTRICAL PANEL INCLUDES AC & DC CIRCUIT BREAKERS

14. AUTOMATIC ISOLATING & BOOSTER TRANSFORMER - 50AMP x 2
15. ANTI ELECTROLYSIS BONDING SYSTEM
16. 4KW INVERTER x 1

VI. MECHANICAL AND PLUMBING SYSTEM:

1. HOLDING TANK WITH MACERATOR PUMP
2. HOLDING TANK LEVEL INDICATOR
3. SUMP PUMP FOR SHOWERS
4. MARINE GRADE LINES FOR FRESH WATER SYSTEM
5. S/S WATER TANK WITH SENDING UNIT - 260 GALLONS
6. ALUMINIUM FUEL TANK WITH SENDING UNIT - 1130 GALLONS
7. SIGHT GAUGES FOR FUEL AND WATER TANKS
8. DOCKSIDE FRESH WATER INLET
9. COLOR CODED PIPING FOR EASY IDENTIFICATION
10. BRONZE INTAKE VALVES FOR ALL THRU-HULL FITTINGS
11. MANIFOLD FOR OVERBOARD DISCHARGES TO MINIMIZE NUMBER OF THRU-HULL FITTINGS
12. SEALAND FRESH WATER VACUUM TOILET SYSTEM
13. HIGH WATER BILGE ALARM X 6 AREAS
14. RULE 3700 BILGE PUMPS 24V x 6
15. BOW & STERN HYDRAULIC THRUSTERS
16. "AT REST" STABILIZERS

VII. INTERIOR FINISH:

1. INTERIOR JOINERY IN CHERRY AND IVORY LACQUER WITH ANDARI COLLECTION OF UPHOLSTERY FABRICS
2. OWNERS CHOICE OF MARBLE SHOWER FLOOR AND MARBLE COUNTERTOPS

VIII. GALLEY:

1. SUB-ZERO ID-24R DRAWER TYPE REFRIGERATOR
2. SUB-ZERO ID-24FI DRAWER TYPE FREEZER
3. S/S SINK
4. HOT AND COLD WATER SYSTEM
5. FISHER & PAYKEL LATEST MODEL DISHWASHER x 1
6. DOUBLE AC SOCKETS x 2
7. CUPBOARD, DRAWERS AND STOWAGE
8. GE LATEST MODEL MICROWAVE W/EXTRACTOR FAN
9. GE LATEST MODEL TRASH COMPACTOR
10. TEAK SOLE
11. MIELE LATEST MODEL 4 BURNER COOKTOP

IX. SALOON:

1. PNEUMATIC S/S SALOON SLIDING DOOR
2. VIZIO M471i-A2 47" TV
3. BOSE LIFESTYLE 535 SERIES III HOME THEATER SYSTEM
4. PIONEER BDP-160 BLU-RAY DISC PLAYER

5. APPLE TV
6. HIGH QUALITY LEATHER COUCH IN LOWER SALOON & DINING AREA
7. BLINDS, CURTAINS
8. LOW LEVEL LIGHTS 24V
9. CEILING LED LIGHTING 24V
10. COFFEE TABLE
11. INDIRECT LIGHTING
12. U-LINE 1115WC WINE COOLER
13. SPLENDID LATEST MODEL WASHER
14. SPLENDID LATEST MODEL DRYER

X. MASTER STATEROOM:

1. KING SIZE BERTH
2. STORAGE BENEATH
3. DRAWERS IN BASE OF BERTH
4. VANITY
5. LED CEILING LIGHTING 24V
6. CANTALUPI MILOS/CHROME/MATT NICKLE LED READING LIGHTS 110VAC x 2
7. TWO LARGE RECTANGULAR PORTLIGHT WINDOWS ON EACH SIDE W/CENTER PIECE OPENABLE
8. VIZIO M322I-B1 32" 1080P LED LCD HDTV
9. FUSION STEREO SYSTEM

MS-RA205 RECEIVER / MEDIA PLAYER WITH FULL IPOD / IPHONE CONTROL

MS-CL602 6" MARINE CEILING MOUNT SPEAKERS x 4

MS-BT200 BLUETOOTH ADAPTER MODULE FOR SIRIUS PORT

10. SONY BDP-S360 BLU-RAY DISC PLAYER

11. APPLE TV

12. WALK-IN CLOSET

XI. MASTER ENSUITE SHOWER ROOM:

1. SEALAND VACUUM TOILET (BONE COLOR)

2. WASH BASIN WITH MABLE COUNTERTOP

3. HOT & COLD WATER

4. FAUCET AND FITTINGS

5. DRESSING MIRROR AND MİRRORED CEILING

6. LACQUER FINISH ABOVE BASIN COUNTERTOP

7. VENEER FINISH BELOW BASIN COUNTERTOP

8. EXTRACTOR FAN

9. AC DOUBLE SOCKET WITH GFI

10. LAQUER FINISH IN SHOWER AREA

11. LED CEILING LIGHTS 24V

12. MARBLE FLOOR

XII. FORWARD (VIP) STATEROOM:

1. DOUBLE BERTH

2. STORAGE BENEATH

3. DRAWERS IN BASE OF BERTH

4. WALK-IN CLOSET

5. VIZIO M322I-B1 32" 1080P LED LCD HDTV

6. QUICK MAYA30 READING LIGHTS 24V x 2

7. LED CEILING LIGHTS 24V

8. FUSION STEREO SYSTEM
MS-AV700I DVD / RECEIVER – WITH FUSION LINK.
MS-CL602 6" MARINE CEILING MOUNT SPEAKERS x 4
MS-BT200 BLUETOOTH ADAPTER MODULE FOR SIRIUS PORT

9. APPLE TV

10. AC DOUBLE SOCKETS

11. ESCAPE HATCH

12. ONE LARGE RECTANGULAR PORTLIGHT WINDOW EACH SIDE WITH CENTER PIECE OPENABLE

XIII. FORWARD (VIP) ENSUITE SHOWER ROOM:

1. SEALAND VACUUM TOILET (BONE COLOR)

2. WASH BASIN WITH MABLE COUNTERTOP

3. HOT & COLD WATER

4. FAUCET AND FITTINGS

5. DRESSING MIRROR AND MIRRORED CEILING

6. LACQUER FINISH ABOVE BASIN COUNTERTOP

7. VENEER FINISH BELOW BASIN COUNTERTOP

8. EXTRACTOR FAN
9. AC DOUBLE SOCKET WITH GFI
10. SHOWER AREA W/LACQUER FINISH
11. LED CEILING LIGHTS 24V
12. MARBLE FLOOR

XIV. PORT GUEST CABIN:

1. ONE DOUBLE BERTH
2. UNDER BERTH STORAGE
3. QUICK MAYA30 READING LIGHTS 24V x 2
4. LED CEILING LIGHTS 24V x 2
5. HANGING LOCKER
6. VIZIO M322I-B1 32" 1080P LED LCD HDTV
7. FUSION STEREO SYSTEM
MS-AV700I DVD / RECEIVER – WITH FUSION LINK.
MS-CL602 6" MARINE CEILING MOUNT SPEAKERS x 2
MS-BT200 BLUETOOTH ADAPTER MODULE FOR SIRIUS PORT
8. APPLE TV

XV. PORT HEAD/DAY HEAD:

1. SEALAND VACUUM TOILET (BONE COLOR)
2. WASH BASIN WITH MABLE COUNTERTOP
3. HOT & COLD WATER
4. FAUCET AND FITTINGS

5. MIRROR AND MIRRORED CEILING
6. SEPARATE SHOWER COMPARTMENT W/LACQUER FINISH
7. AC DOUBLE SOCKET WITH GFI
8. LACQUER FINISH ABOVE BASIN COUNTERTOP
9. VENEER FINISH BELOW BASIN COUNTERTOP
10. EXTRACTOR FAN
11. LED CEILING LIGHTS 24V
12. MARBLE FLOOR

XVI. STARBOARD CABIN:

1. DESK AND OVERHEAD STORAGE
2. HANGING CLOSET
3. CONCEALED SHELVES/STORAGE
4. LED CEILING LIGHTS 24V x 2
5. HANGING LOCKER
6. FUSION STEREO SYSTEM
MS-RA205 RECEIVER / MEDIA PLAYER WITH FULL IPOD / IPHONE CONTROL
MS-CL602 6" MARINE CEILING MOUNT SPEAKERS x 2
MS-BT200 BLUETOOTH ADAPTER MODULE FOR SIRIUS PORT

XVII. CREW CABIN:

1. LED CEILING LIGHTS 24V
2. AC DOUBLE SOCKET

3. U-LINE CO29B03 ICEMAKER

4. VIZIO 24" CLASS E2411-B1 SMART TV

5. FUSION STEREO SYSTEM

MS-AV700I DVD / RECEIVER – WITH FUSION LINK.

MS-CL602 6" MARINE CEILING MOUNT SPEAKERS x 4

MS-BT200 BLUETOOTH ADAPTER MODULE FOR SIRIUS PORT

6. APPLE TV

REMARKS

70' JOHNSON SKYLounge (New Construction)

Please note, this is an unbuilt new construction project which has not yet been started.

Listing broker has a list of popular options and prices, however, the standard equipment list above is very complete! Completion time is approximately 9-12 months depending on other yard projects.

****OPTIONS UPON REQUEST****

****ALL SPECIFICATIONS SUBJECT TO CHANGE WITHOUT NOTICE ****

Since this is a new build offering, all photos are of previous projects. Exact layout, wood and stone selection are buyer's choice.

No US Tariff or Duty are included in the price. All Prices are FOB Taiwan.

Disclaimer

Specifications are provided for informational purposes only. Data was obtained from sources believed reliable but is not guaranteed by owner or brokers. Buyer assumes responsibility to verify all speeds, capacities, consumption's and other measurements contained herein and otherwise provided and agrees to instruct his agents to confirm such details prior to purchase. Vessel is subject to prior sale, price and inventory changes and withdrawal from market without notice.