



Type	Boats Bow Rider	Classification	--
Top	--	Class Type	--
Model	350H	Builder	FOUR WINNS
Manuf. Year	2019	Naval Architect	Four Winns
Refit Year	--	Interior Design	Four Winns
LOA	35' 1" (10.69m)	Hull	Fiberglass
Beam	10' 10" (3.3m)	Deck	Fiberglass
Draft Min/Max	2' 6" (0.76m) / 3' 4" (1.01m)	Engines	2x, Mercury, Verado 350CXXL, 350 HP
GRT	--	Max Speed	--
Fuel	170 Gal	Cruise Speed	--
Water	35 Gal	Range	--
Flag	--	Accommodations	1 strms

ASKING PRICE: \$175,000 USD

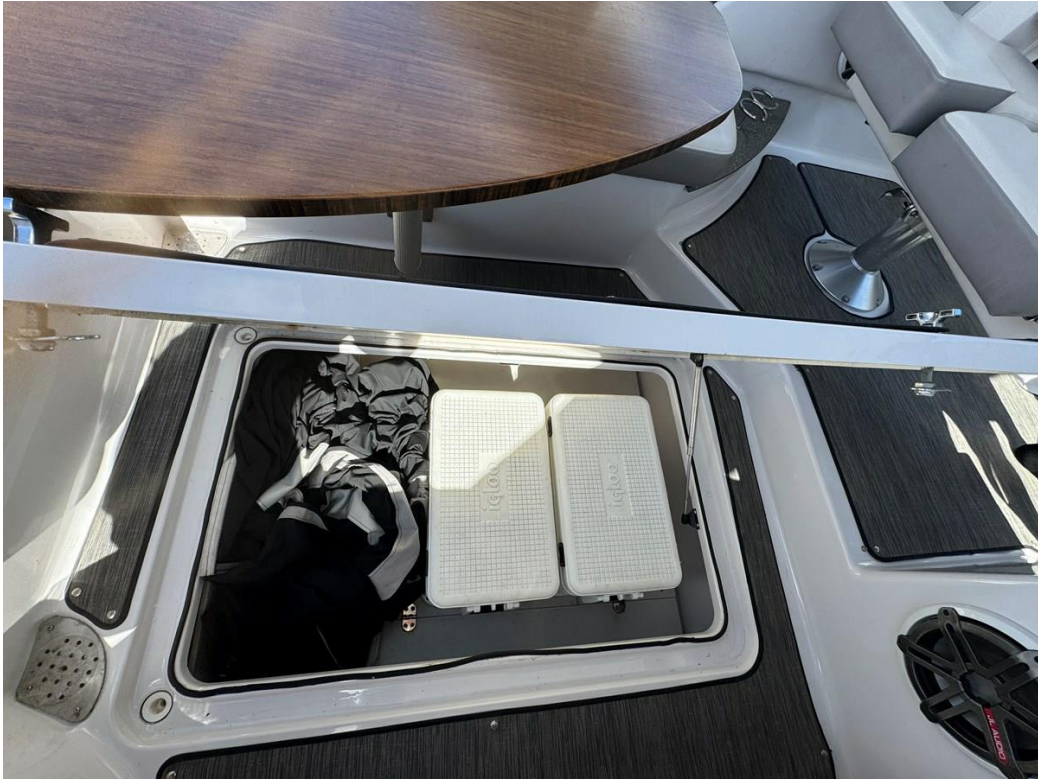








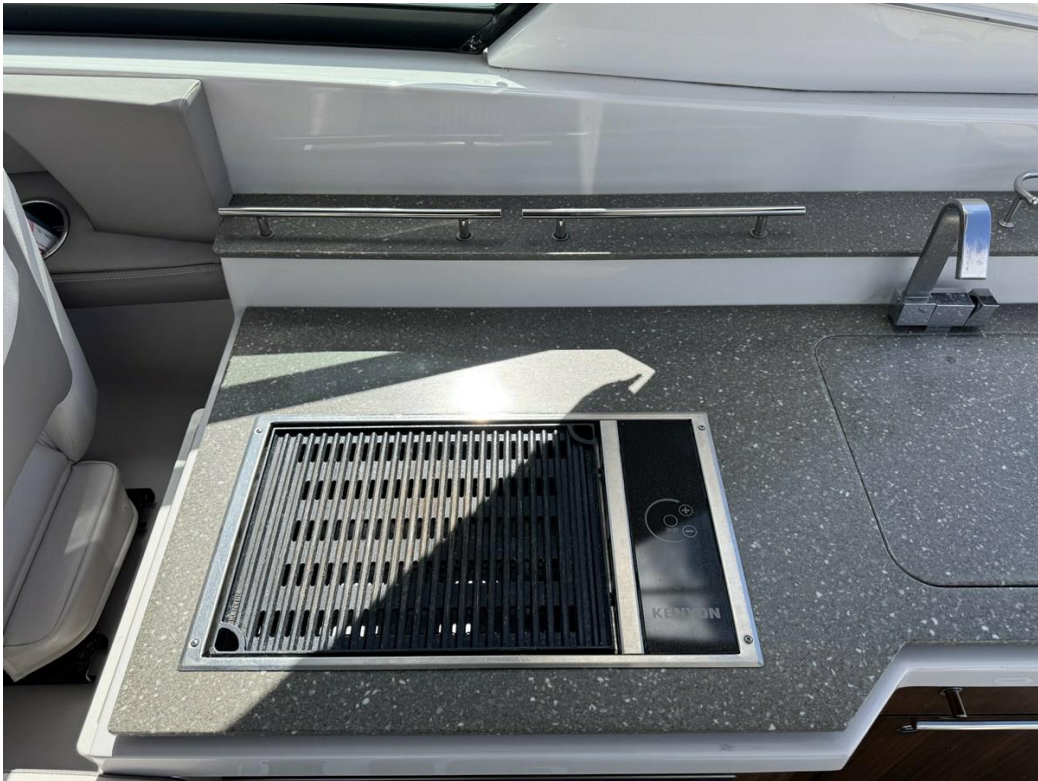






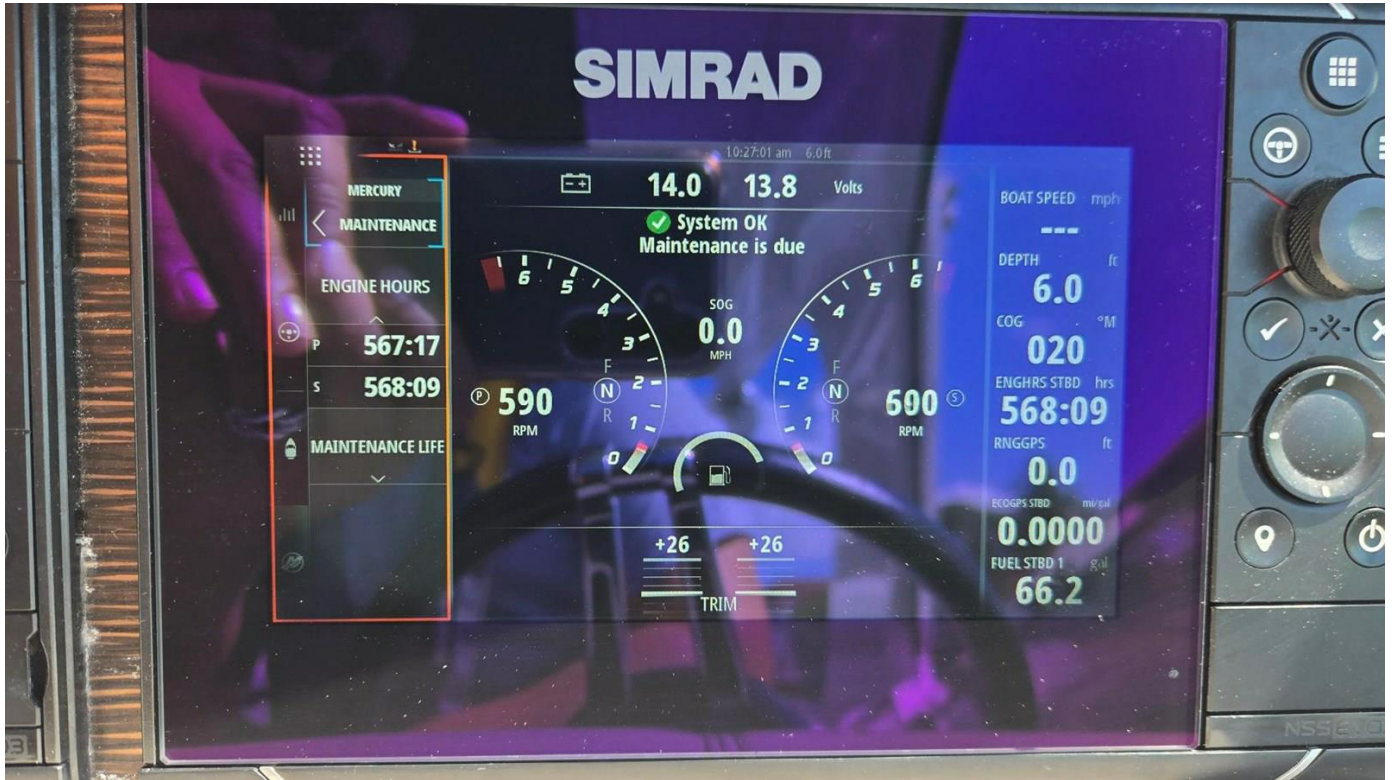






















Options include:

Exterior - White & Phantom Gray

Trim Tab Auto Glide

Joystick

Sky Hook

Auto Pilot

Twin Simrad Screens

Windlass

Bow Fill in Cushion.

Fire Extinguisher System

Bow Cover & Full Camper Enclosure

Marine Electric Toilet & Macerator w/ Overboard Discharge

Air condition /Heat 12K BTU

GENERATOR 5K Westerbeke

Cockpit Refrigerator

Upgraded Premium Sound System

26" Flat Screen TV

Underwater Lights

Remote Spotlight

Electric Retractable Sunshade

Windshield Wiper

Hours 500hrs

Boat Location offsite