



Type	Motor Yacht	Classification	--
Top	--	Class Type	--
Model	390 Sundancer	Builder	SEA RAY
Manuf. Year	2005	Naval Architect	--
Refit Year	--	Interior Design	--
LOA	39' (11.89m)	Hull	Fiberglass
Beam	13' 2" (4.01m)	Deck	--
Draft Min/Max	-- / 2' 10" (0.86m)	Engines	2x, Cummins Mercruiser, QSB 380, 380 HP
GRT	--	Max Speed	--
Fuel	275 Gal	Cruise Speed	--
Water	70 Gal	Range	--
Flag	--	Accommodations	--

ASKING PRICE: **\$189,000 USD**

2_IMG_6904



3_IMG_6901



4_IMG_6413



5_IMG_6458



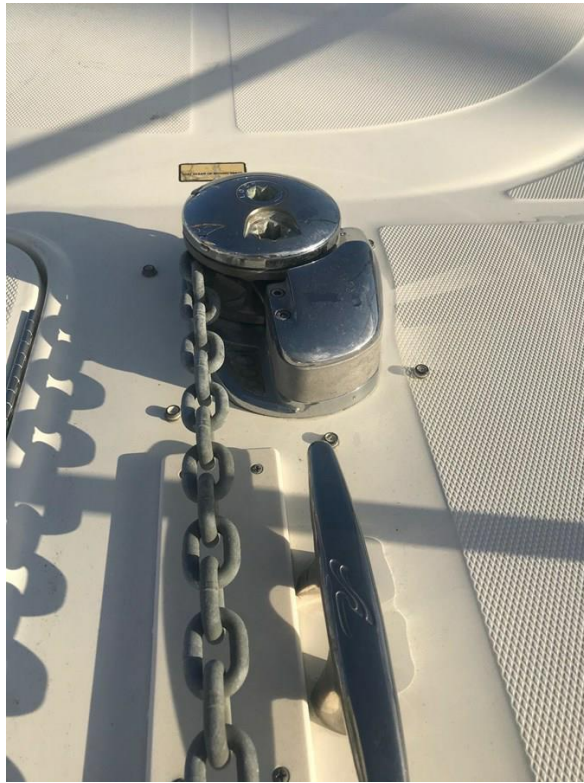
6_IMG_6424



7_IMG_6460



8_IMG_6471



9_IMG_6461



10_IMG_6456



11_IMG_6455



12_IMG_6470



13_IMG_6452



14_IMG_6454



15_IMG_6453



16_IMG_6450



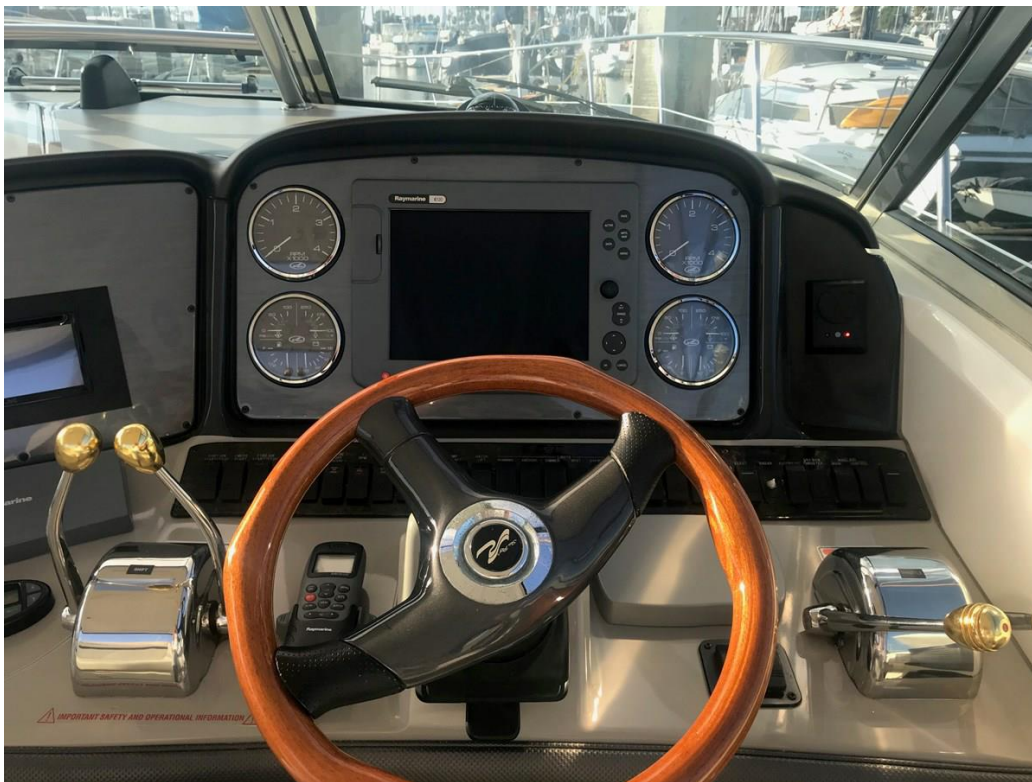
17_IMG_6449



18_IMG_6447



19_IMG_6445



20_IMG_6440



21_IMG_6443



22_IMG_6427



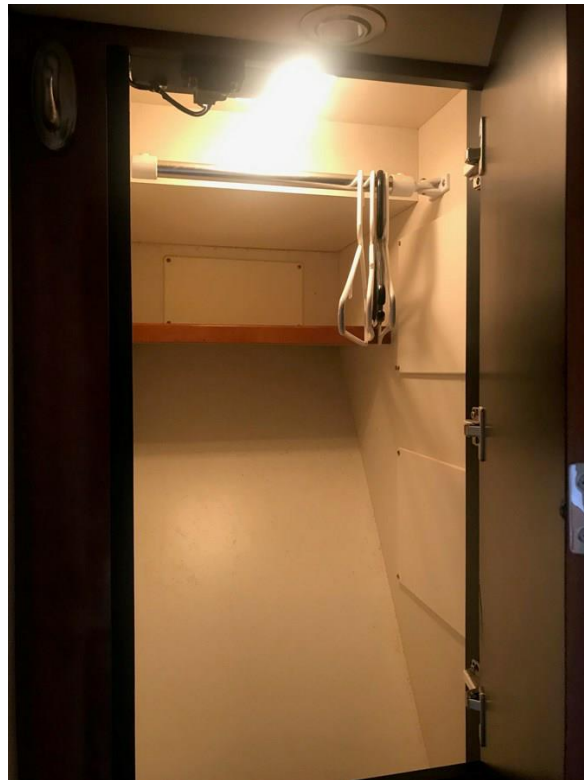
23_IMG_6428



24_IMG_6430



25_IMG_6429



26_IMG_6434



27_IMG_6435



28_IMG_6433



29_IMG_6436



30_IMG_6462



31_IMG_6467



32_IMG_6466



Features

- Standard SmartCraft™ Instrumentation and System View
- Optional fiberglass hardtop with full enclosure
- Swivel bucket helm seat with flip-up thigh-rise bolster
- Companion bench with molded fiberglass storage
- Electrically actuated engine compartment hatch
- Standard generator
- Standard LCD flip-down flatscreen TV with DVD in salon
- 12V AM/FM single CD with six-disc CD changer, eight (8) speakers and digital cockpit remote control
- Innerspring mattress is standard in forward stateroom
- Ultraleather HPTM standard on all interior seating
- Raymarine® electronics package (VHF & GPS) is standard
- Optional Sea Ray® Navigator™ II with 12.1" PC chartplotter with sunlight-viewable touch-screen LCD
- Underwater exhaust
- Dedicated storage with cooler in cockpit
- Integrated swim platform

Accommodations

- Carbon Monoxide Monitors
- Carpet, Deep-Pile BCF - 44-Ounce
- Carpet Runners, Interior (Sunbrella)
- Curtains & Drape Trim
- Handrails, Stainless Steel
- Interior Finish - Blossom Cherry (also available in Natural Maple)
- Lighting, 12V Halogen
- Lighting, 12V Indirect
- Outlet, Phone
- Outlets, 120V GFI Protected
- Outlets & Switch Plates - Satin Nickel Finish
- Pillows, Accent
- Stereo, 12V AM/FM Single CD, Satellite-Ready w/6-Disc CD Changer, Amplifier, Subwoofer, Speakers (8), Digital Cockpit Remote Control & Speaker Selector Switches (Clarion®)
- Storage, In-Floor
- Wood Trim, Handcrafted

Salon:

- Blinds, Wood

- Mirrors, Wall Accent
- Seating, L-Shaped Sofa w/Storage Below - Converts to Bed w/Filler Cushions (Ultraleather HP™)
- Storage, Gunwale Cabinets
- Table, Dinette w/High-Gloss Wood Surface & Dedicated Storage
- TV, 20" Flatscreen LCD, Flip Down, (120V) w/Remote DVD Player, Coax Outlet & Gain Control Panel

Galley:

- Coffeemaker, 120V
- Handcrafted Cabinets
- Countertop, Solid Surface, Sink, Single-Lever Grohe® Faucet & Sink Cover
- Freezer, Under-Counter - Dual-Voltage - 120V/12V (Waeco®)
- Microwave, 120V
- Outlet, 12V Accessory
- Power Vent, 12V
- Refrigerator, Under-Counter - Dual-Voltage - 120V/12V (Waeco)
- Storage, Drawers w/Cutlery Insert
- Storage, Upper & Lower w/Designated Plate & Glass Storage
- Stove, 120V Surface-Mounted, Two-Burner w/Touch Pad
- Trash Receptacle w/Chute & Solid Surface Cover

Forward Stateroom:

- Bed, Full-Size w/ Innerspring Mattress, Pillows, Sheets & Coordinated Spread
- Door, Privacy - Sliding Pocket
- Hanging Locker, Mirrored w/Light - Port
- Mirrored Rope Locker Bulkhead
- Storage Compartment - Starboard
- Storage, Gunwale Cabinets - Port & Starboard
- TV/DVD Combo, 13" - 120V w/Remote & Coax Outlet

Forward Head - Port:

- Door, Privacy - Access from Forward Stateroom & Salon
- Handrails, Stainless Steel
- Head, Large (VacuFlush®)
- Power Vent, 12V
- Storage, Medicine Cabinet - Mirrored
- Vanity w/Sink, Grohe Faucet & Storage Below

Forward Shower - Starboard:

- Clothes Hook
- Curtain, Shower

- Door, Privacy - Access from Forward Stateroom
- Handrails, Stainless Steel
- Shower w/Seat & Adjustable Grohe Shower Wand

Mid-Stateroom:

- Curtain, Privacy w/Dedicated Storage
- Hanging Locker w/Light - Port
- Mirrored Bulkhead - Aft
- Portlight, Stainless Steel - Fixed
- Seating, Conversation Pit w/Slide-Out Base
- Storage, Cabinet - Starboard

Hull and Deck

- Bottom Paint
- Bow Rail, 316 Stainless Steel w/Welded Stanchions, Intermediate Rails & Life Lines
- Cleats, Custom Sea Ray® Thru-Bolted - Stainless Steel (8)
- Deck Fill Plates, Stainless Steel Deck Rails, 316 Stainless Steel
- Drain Plugs, Brass-Threaded - Garboard
- Gel Coat, Arctic White
- Graphics, Striping
- Handrails, 316 Stainless Steel
- Hatch, Deck Vent - Translucent w/Locks & Sky Screen Cover (20x20)
- Lights, Navigation
- Portlights, Stainless Steel (4 Fixed, 2 Opening)
- Resin, High-Performance Vinylester
- Rub Rail, PVC w/Stainless Steel Insert Skylights, Flush-Mount w/Retractable Sunshade - Salon
- Storage, Transom Wall - (For Fenders & Gear)
- Stringer System, Fiberglass
- Swim Platform, Integral w/Concealed Stainless Steel Three-Step Swim Ladder w/Integral Grab Handle
- Thru-Hull Fittings, Stainless Steel
- Toe Rail, Molded Fiberglass - Deck
- Vent System, Engine Room - Integral
- Windshield, Tempered/Tinted Curved Glass w/Stainless Steel Frame, Electric Front Vent & Stainless Steel Supports
- Windshield Washer System
- Windshield Wipers w/Delay & Speed Control

Canvas (Sunbrella®):

- Aft Curtain
- Aft Sunshade

- Bimini Top w/Boot & Vertical Storage Canvas Storage Bag
- Front Curtains
- Side Curtains

Windlass System:

- Anchor, Galvanized
- Anchor Chute, Stainless Steel
- Anchor Rope/Chain Storage w/Hatch
- Anchor Washdown Spigot
- Windlass, Rope/Chain w/Foot Switches (Lofrans® Project 1,000 Low Profile)

Cockpit

- Beverage Holders (6)
- Carpet Liner, Snap-In
- Door, Cabin Entry - Acrylic
- Door, Transom
- Floor Liner, Fiberglass - Self-Bailing
- Hatch, Engine Room - Electrically Actuated
- Ice Bucket, Insulated - Built-In
- Ice maker, 120V
- Lighting, Indirect
- Outlet, 12V Accessory
- Outlet, 120V GFI Protected
- Seating, Companion Bench w/Molded Fiberglass Storage Base & Euro-Style Backrest
- Seating, Helm - Bucket w/Slider, Flip-Up Thigh-Rise Bolster, Fiberglass Shell, Cooler, & Storage Below
- Seating, U-Shaped - Aft
- Ship's Bell
- Sport Spoiler, Molded Fiberglass (Seamless) w/Overhead Lighting
- Step, Molded Deck Access
- Storage, Side Panel
- Table, Cockpit w/Dedicated Storage
- Wet Bar w/Sink, Faucet, Corian® Countertop, Stainless Steel Handrail, Trash Receptacle & Storage Cabinet - Port

Technical

Control Station:

- Alarms, Engine - Oil, Water & Transmission Oil
- Alarms, High-Water - Bilge & Cabin
- Compass

- Dash, Gel-Coated - Nickel
- Emergency Start System - Engines
- Horns, Air (Concealed) - Dual Trumpet Instrument Panel
- Shift & Throttle Controls w/Gold Knobs SmartCraft™ Diagnostics:
 - ◊ -Instrumentation, Custom Sea Ray SmartCraft 4-in-1 Multigauges (2) w/Low-Glare Blue Night Lighting & Chrome Bezels (Includes: Fuel Level, Oil Pressure, Voltmeter, Water Temperature)
 - ◊ -SmartCraft System View (Includes: Air & Water Temperature, Combined Fuel Flow/Range, Depth, Engine Alarms/Hourmeters, Engine Synchronizer, GPS Interface, System Maintenance Records)
- Steering, Hydraulic
- Steering, Tilt Wheel
- Steering Wheel, Wood-Accent
- Switch Panel (Backlit)
- Switches, Illuminated Weatherproof Rockers & Dimmer Control
- Systems Monitor, Digital LCD - for Engine Diagnostics & Pump Monitoring

Electronics:

- Electronics Circuit, 50 Amp/12V
- Raymarine® RayNav 300 GPS w/WAAS Differential Sensor
- Raymarine VHF Radio 230 w/Remote Speaker & 8' Fiberglass Antenna

Electrical Systems:

- Batteries (4) w/Trays
- Battery Charger/Converter, 120V/40 Amp/12V
- Panel, Circuit Breaker - Remote
- Panel, DC Main Breaker
- Panel, Main Distribution - AC
- Panel, Main Distribution - DC
- Shore Power, Dual 30 Amp/120V/60 Cycle w/Zinc Savers, & 50' Cords & Adapters
- TV/Phone Inlet w/TV Antenna, TV Shore Cord & Phone Shore Cord
- Wiring, Color-Coded w/Chafe Protection

Generator:

- Remote Start w/Muffler, Freshwater Cooling, Fuel Filter, Seacock, Seawater Strainer, 120V/60 Cycle 7.3 kW Kohler® Gas w/Sound Shield Generator manufacturer and size may vary due to product availability.)

Air Conditioning/Heating:

- Zone-Controlled Reverse-Cycle System (19,000 BTU)

- Custom Integral Vent System

Engine Room:

- Bilge Pumps, 12V Automatic (2)
- Bilge Pumps, 12V Automatic High-Water (1 Bilge, 1 Cabin)
- Blowers, 12V Bilge (2)
- Exhaust, Underwater - Patented
- Fire Suppression System - Automatic w/Manual Pull
- Freshwater Cooling
- Gel-Coated Engine Room, Oyster
- Insulation, Engine Room - 2" w/Vinyl Barrier
- Lighting, 12V
- Oil Changer System - Engines & Generator (Diesel Only)
- Steps, Engine Room Access

Fuel System:

- Fuel Filters, Remote - Diesel (Racor®)
- Fuel Lines, USCG - Type A-1
- Fuel Tanks, Aluminum w/Anti-Siphon Valves & Electric Sending Units (2)

Water System:

- Freshwater Spigot - Engine Room
- Freshwater Washdown Spigot - Transom
- Manifold System w/Shutoff Valves
- Pressure Water System w/12V Pump Shower, Cockpit - Hot & Cold
- Water Heater, 120V (6-Gallon)
- Water Inlet, Dockside

Waste Systems:

- Head System (VacuFlush®)
- Holding Tank Level Indicators - MDP & Head
- Holding Tank w/Dockside Pump-Out & Automatic Cut-Off (42-Gallon)
- Sump Box w/Pump - Automatic

Underwater Gear:

- Bonding System w/Zinc Hull Plate
- Propeller Shafts, 1 1/2" Stainless Steel (2) - Aquamet 19 (Gas)
- Propellers, Nibral 4-Blade Cup
- Rudders, Manganese-Bronze w/Stainless Steel Posts
- Seacocks on all Underwater Fittings
- Seawater Strainers

- Shaft Logs, Dripless w/Extra Seal Carrier Kit
- Struts, Manganese-Bronze
- Trim Tabs, Hydraulic

Manufacturer Provided Description

Designed to get noticed, the 390 Sundancer features elegance at every turn. A sleek, low-profile helm plus glove-soft cockpit seating makes this member of the Sundancer family an ideal place to spend a weekend of fun. Below, the gorgeously appointed salon includes a fully equipped entertainment center, beautiful wood crafted galley and separate conversation area that converts to a bed for overnight guests.

Disclaimer

The Company offers the details of this vessel in good faith but cannot guarantee or warrant the accuracy of this information nor warrant the condition of the vessel. A buyer should instruct his agents, or his surveyors, to investigate such details as the buyer desires validated. This vessel is offered subject to prior sale, price change, or withdrawal without notice.