



|                      |                              |                        |                                            |
|----------------------|------------------------------|------------------------|--------------------------------------------|
| <b>Type</b>          | <b>Motor Yacht Flybridge</b> | <b>Classification</b>  | --                                         |
| <b>Top</b>           | --                           | <b>Class Type</b>      | --                                         |
| <b>Model</b>         | <b>NC1095 FLY</b>            | <b>Builder</b>         | <b>JEANNEAU</b>                            |
| <b>Manuf. Year</b>   | <b>2022</b>                  | <b>Naval Architect</b> | --                                         |
| <b>Refit Year</b>    | --                           | <b>Interior Design</b> | --                                         |
| <b>LOA</b>           | <b>34' 3" (10.44m)</b>       | <b>Hull</b>            | <b>Fiberglass</b>                          |
| <b>Beam</b>          | <b>11' 1" (3.38m)</b>        | <b>Deck</b>            | --                                         |
| <b>Draft Min/Max</b> | <b>-- / 2' 3" (0.69m)</b>    | <b>Engines</b>         | <b>2x, Mercury, Verado 300 JPO, 300 HP</b> |
| <b>GRT</b>           | --                           | <b>Max Speed</b>       | --                                         |
| <b>Fuel</b>          | <b>106 Gal</b>               | <b>Cruise Speed</b>    | --                                         |
| <b>Water</b>         | --                           | <b>Range</b>           | --                                         |
| <b>Flag</b>          | --                           | <b>Accommodations</b>  | <b>3 strms</b>                             |

**ASKING PRICE: \$399,900 USD**

Image 2\_Profile



Image 3\_Salon



Image 4\_Dinette



Image 5\_Double Berth



**Image 6\_Galley**



**Image 7\_Master V-Berth**



**Image 8\_2nd Cabin**



**Image 9\_3rd Cabin**

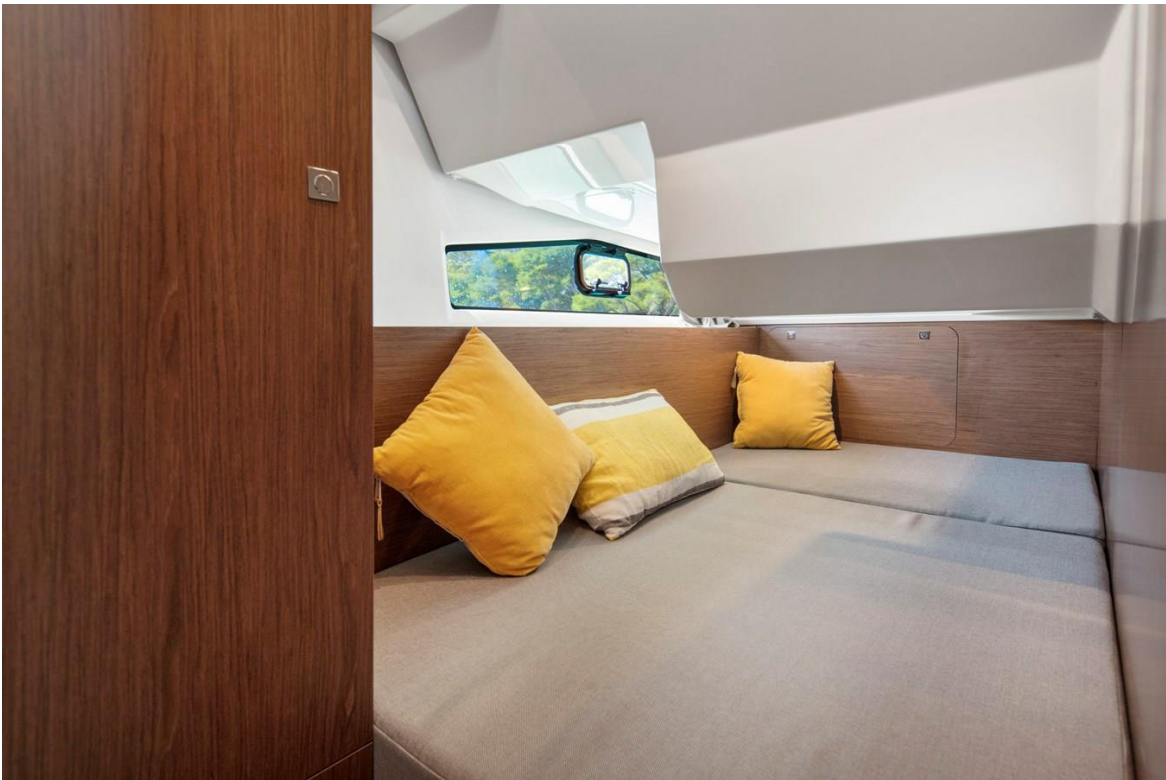


Image 10\_Head





## List of options:

- Powered with: Twin Mercury Verado 300 HP
- Salon Upholstery Dolce Leatherette
- Trim Level Premiere
- Comfort Pack
- Audio Pack Fusion
- Anchoring Kit
- Cockpit Sun Awning
- Bow Ladder with Platform
- Bimini of Fly
- 2 Rod Holders
- 2 Teak Cockpit Table on Fly
- Teak Side Deck and Cockpit Floor
- Flybridge Table and Cushion for Lounge Chair
- Sunpad on Fly
- Simrad Electronics w/Autopilot
- Bow Sundeck with Lifting Backrest
- Bow Thruster Double Control
- Automatic Trim Tabs Zipwake
- Additional Water Tank
- Generator
- Air Conditioning
- Deck Searchlight
- TV Antenna
- Underwater Lights
- VHF Garmin Double Station

- Additional Fridge in Storage Compartment
- Microwave
- Vitroceramic Cooktop
- Mattress for 3rd Cabin
- Double Berth in Salon
- Overhead Lockers in Galley, Salon and Front Cabin
- Horn
- Bottom Paint

## Default Disclaimer

The Company offers the details of this vessel in good faith but cannot guarantee or warrant the accuracy of this information nor warrant the condition of the vessel. A buyer should instruct his agents, or his surveyors, to investigate such details as the buyer desires validated. This vessel is offered subject to prior sale, price change, or withdrawal without notice