



Type	Cruising Sailboat	Classification	--
Top	--	Class Type	--
Model	445	Builder	ISLAND PACKET
Manuf. Year	2005	Naval Architect	--
Refit Year	--	Interior Design	--
LOA	45' 9" (13.94m)	Hull	Fiberglass
Beam	14' 4" (4.37m)	Deck	--
Draft Min/Max	-- / 5' (1.52m)	Engines	1x, Yanmar, 4JH3-TE, 75 HP
GRT	34500 Lbs	Max Speed	--
Fuel	160 Gal	Cruise Speed	--
Water	260 Gal	Range	--
Flag	--	Accommodations	7 in 2 strms

ASKING PRICE: \$359,000 USD











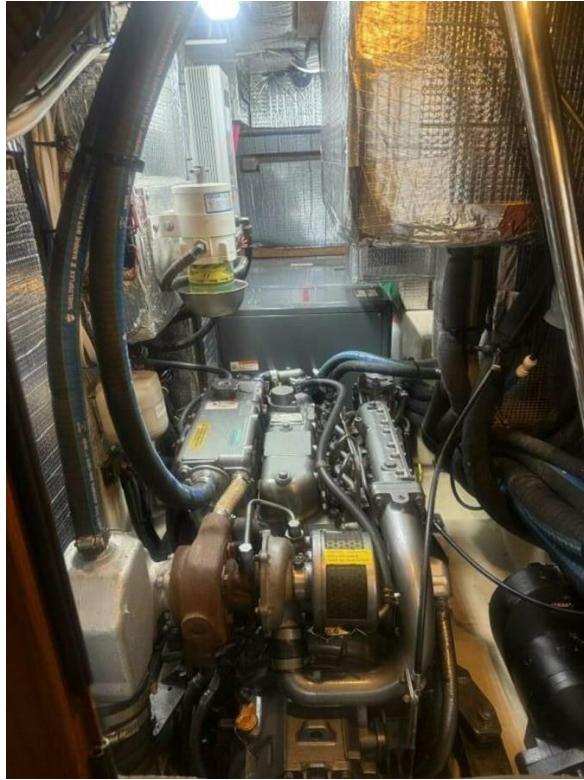
















Description

From her custom arch and davit system aft with integrated antennas, Star Link and solar panels, to the stainless steel deck tubing that runs the full perimeter of the boat, Make Me Laugh Again delivers thoughtful, purpose-built features for safe, comfortable, and convenient living on the water. Below decks, a washer/dryer and LiPo battery installations enhance daily living and reliability for extended off-the-grid cruising.

Under sail, the recently installed North 3Di sails deliver responsive performance, while Harken headsail furlers and an in-mast furling main maximize ease of handling and cockpit safety as all sail control lines are led aft.

Overview

Hull and Deck

- Muir Cheetah 2500 electric windlass with foot switches and cockpit remote
- Anchor wash down (new pump 2019)
- Rocna anchor 40 (88 lbs) with approximately 300 feet of 1/2" chain
- Danforth anchor 44 lbs with approximately 50 feet of chain and 250 feet of rode
- Approximately 300 feet of 1.5" line with eyes for extra anchor rode/tow rope
- Approximately 50 feet of garden hose with nozzle with attachment for wash down system (anchor washdown hose)
- Two anchor bridles
- Dodger, Bimini, and mesh screen enclosure for cockpit
- Cockpit cushions (new 2020)
- 4-cup holder at helm
- Folding table (wood) at helm
- Canvas covers for toe rail and "eyebrow" (new 2021)
- Gas BBQ
- BBQ folding table
- Stainless steel pulpits at mast
- Two 30-amp shore power connections and breakers
- Stainless steel tubes welded life lines (new 2020)
- Stainless fender racks, 3 port and stbd forward (new 2020)
- 4 stainless jerry can racks aft port (2 diesel, 2 gas) all jerry cans in Sunbrella bags (new 2020)
- Stainless propane tank rack aft stbd tank in Sunbrella bag (new 2020)
- Life raft in canister on aft port rail/arch (certified 2022)
- Arch with davits at stern with:
 - Two solar panels 1,100 watts (new 2022)
 - 3 GPS antennas (AIS, VHF/SSB, Chart Plotter)
 - AIS antenna
 - Starlink antenna and router (new 2024)
 - SiriusXM antenna (new 2019)

- Stereo speakers (group 3 for cabin stereo)
- Light for dinghy (switch at helm)
- Stern light at top of arch
- Stern light on stern under dinghy (switch at helm)
- Fishing pole holders (2)
- Flag pole holder
- Two Lewmar 54CEST electric self-tailing winches; port and starboard coamings for jib sheets
- Lewmar 44CEST electric self-tailing winch; cabin top for main sheet and spare main halyard
- Lewmar 44CST manual self-tailing winch; cabin top for main RF handling
- Lewmar 30CST manual self-tailing winch; cabin top for staysail sheet
- 2 mast-mounted Lewmar 30CST manual winches with stoppers for all four halyards
- Cutter rig, with lines for the spinnaker run into the cockpit
- Preventers for mainsail run from cockpit with stops to end of boom (new 2019)
- Electronics
 - Speaker/loud hailer
 - Radar
 - Fore deck light

Sails and Rigging

- Mainsail, genoa and staysail, all North 3Di (new 2021)
- Spinnaker with sock and lines rigged for handling from cockpit
- Full deck shade canopy with two side screens (4 pieces) (new 2021)
- Standing rigging (new 2019; inspected and portions replaced 2025)
- Running rigging (most new 2021)

Mechanical, Electrical and Plumbing

- Yanmar 75 HP diesel engine with 3-bladed prop, approx 3600 hours
- Fuel filter priming system (switch is under box for sink, inside engine room)
- Engine heat exchanger and oil cooler cleaned and rodded out (July 2024)
- Frigiboat Keel Cooler refrigerator and freezer (compressor new 5/2024)
- Beverage cooler drawer, AC/DC air-cooled (new 2021)
- Generator MASPOWER 8KW (electrical end replaced 2022)
- Charles 60 amp charger (used for engine start battery)
- House bank 600 ah LiFePO4 (Battleborn, 6 batteries) (new 2020)
- Engine start battery 100 ah (new 2024)
- Generator start battery 100 ah (new 2024)
- 100 amp Balmar external regulator alternator on engine
- Victron Energy smart battery monitor
- Bilge pump counter
- Two Victron Energy MPPT 100/50 (one for each of the 550 watt panels) located in the chart

locker at the nav station

- 11 gallon water heater (new 2021) heated by 110 VAC and engine coolant loop, under starboard settee
- Air conditioning: 7,000 BTU in forward cabin (new 2019); 7,000 BTU Mabru 12 VDC powered in aft cabin (new 2024); 13,000 BTU in salon
- Water maker AC powered, 33 GPH (new 2021)
- Sidepower bow thruster 6 HP; cockpit joystick control
- Macerator pump for overboard discharge of holding tank
- Sealand Vacu-flush heads with separate vacuum generators for each head
- Shower drain pumps (one for each head); forward head pump (new 2019)
- Fresh water pump (new 2019)
- Nine (9) 2-speed fans throughout boat
- Washer/dryer (new 2019)
- Force 10 three burner stove and oven
- 700 watt microwave

Navigation, Communication and Entertainment

- Fusion MS-RA770 AM/FM/XM stereo with three sets of speakers (salon, cockpit, arch)
- DVD in aft stateroom plays to aft stateroom TV
- VHF radio ICOM IC-M604
- SSB radio ICOM IC-M802 with Pactor modem, antenna on aft port stay
- Raymarine electronics
 - Raymarine S3G autopilot (spare is an X30)
 - AIS transponder
 - Axiom chart plotters, 12" master at nav station, 12" slave at helm, 9" slave above gangway
- TV in aft stateroom
- TV in salon (new 2025)