

ARES

51' 10" (15.78m) | CNM - CANTIERI NAVALI
DEL MEDITERRANEO | 2023



Type	Day Cruiser	Classification	--
Top	--	Class Type	--
Model	CONTINENTAL 54	Builder	CNM - CANTIERI NAVALI DEL MEDITERRANEO
Manuf. Year	2023	Naval Architect	--
Refit Year	--	Interior Design	--
LOA	51' 10" (15.78m)	Hull	GRP
Beam	14' 10" (4.5m)	Deck	Teak
Draft Min/Max	-- / 3' 10" (1.15m)	Engines	2x, MAN, i6 Amason Surface Drives by Twin Disc, 850 HP
GRT	--	Max Speed	47 Knots
Fuel	4000 L (1056.69 Gal)	Cruise Speed	35 Knots
Water	400 L (105.67 Gal)	Range	--
Flag	UK	Accommodations	2 strms

ASKING PRICE: (\$1,958,503 USD est.)
€1,700,000 EUR









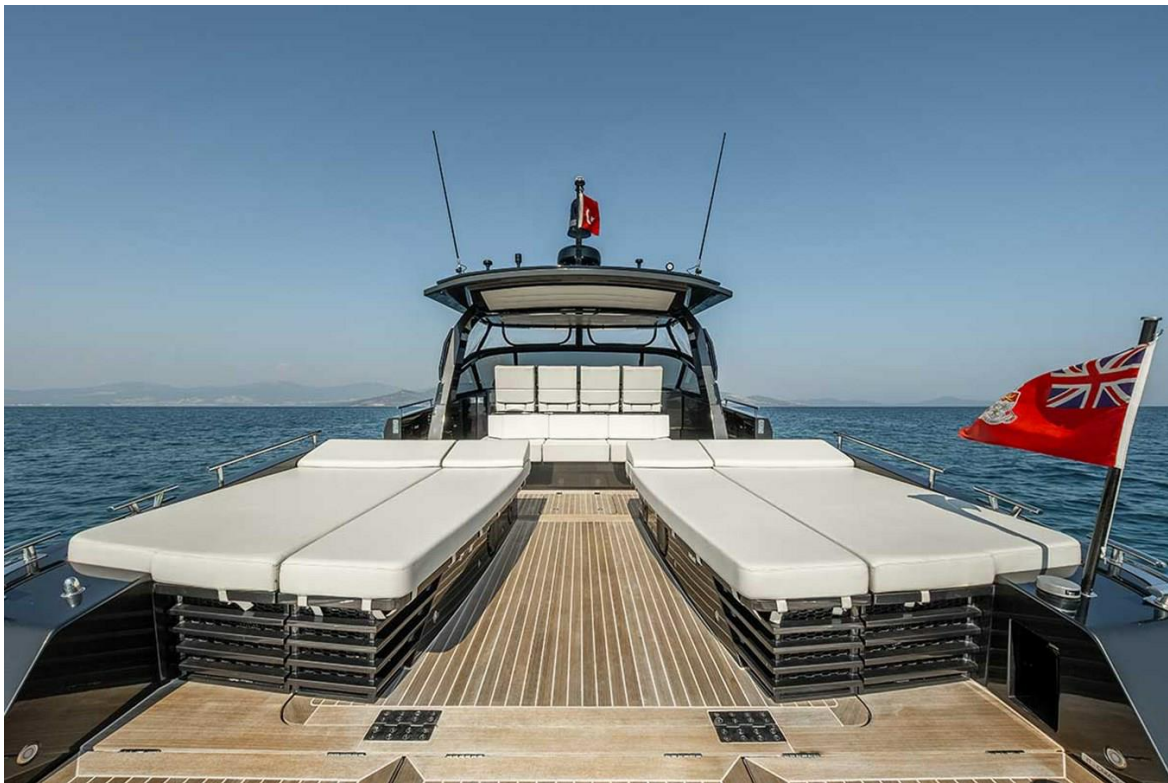
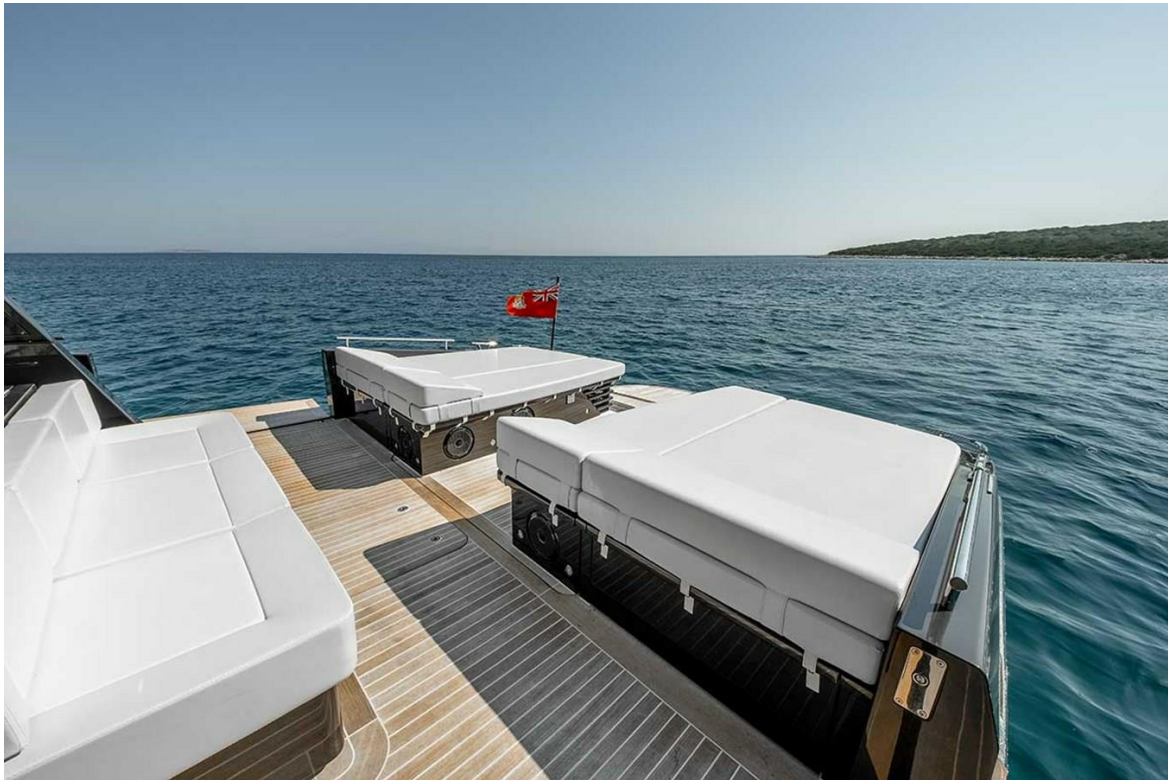


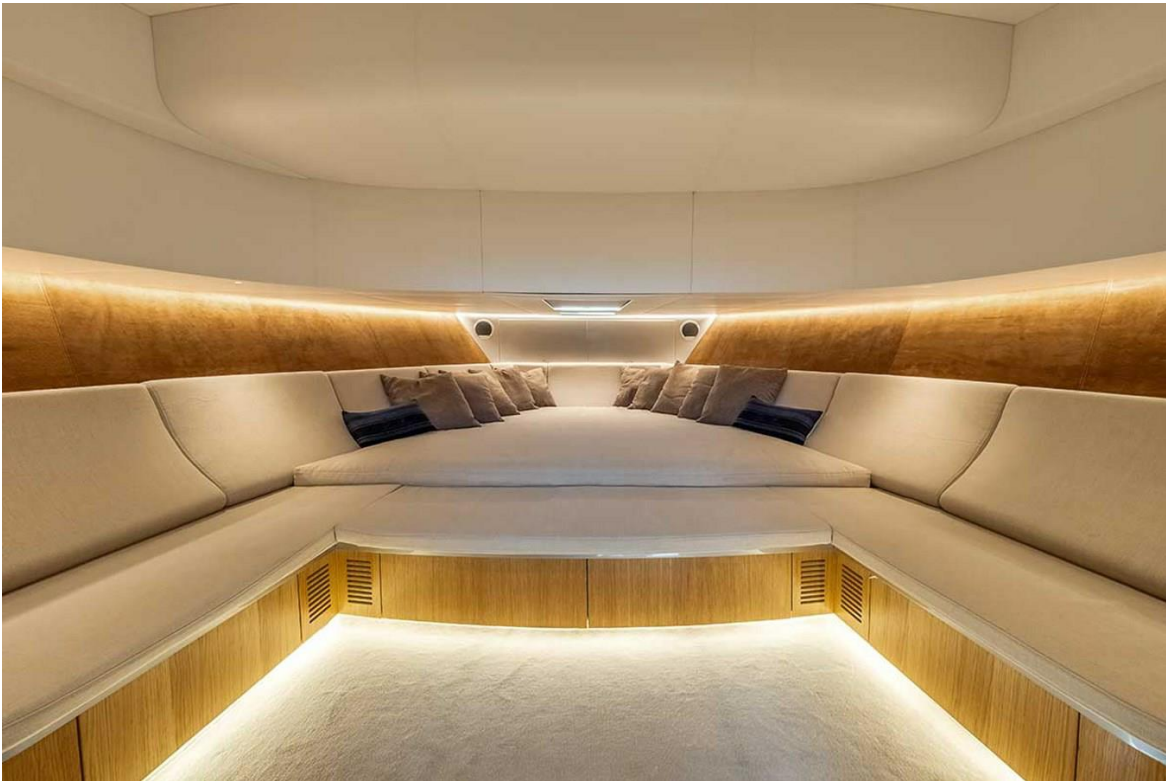










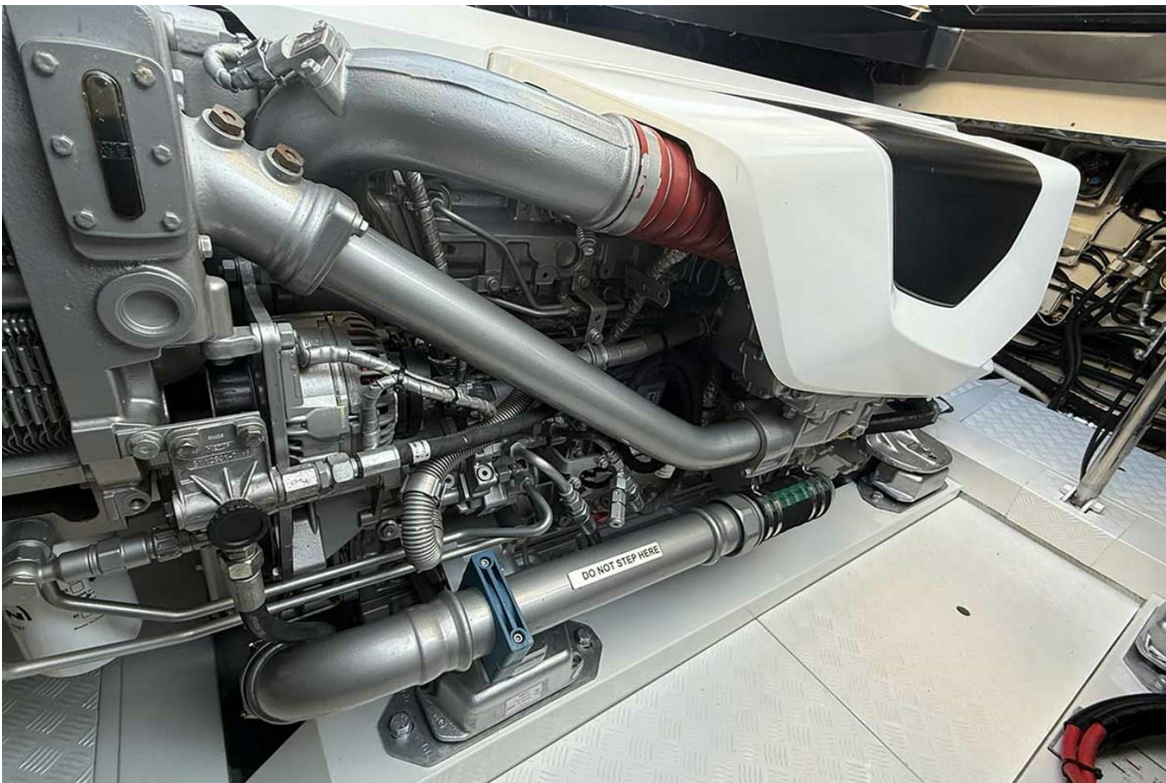
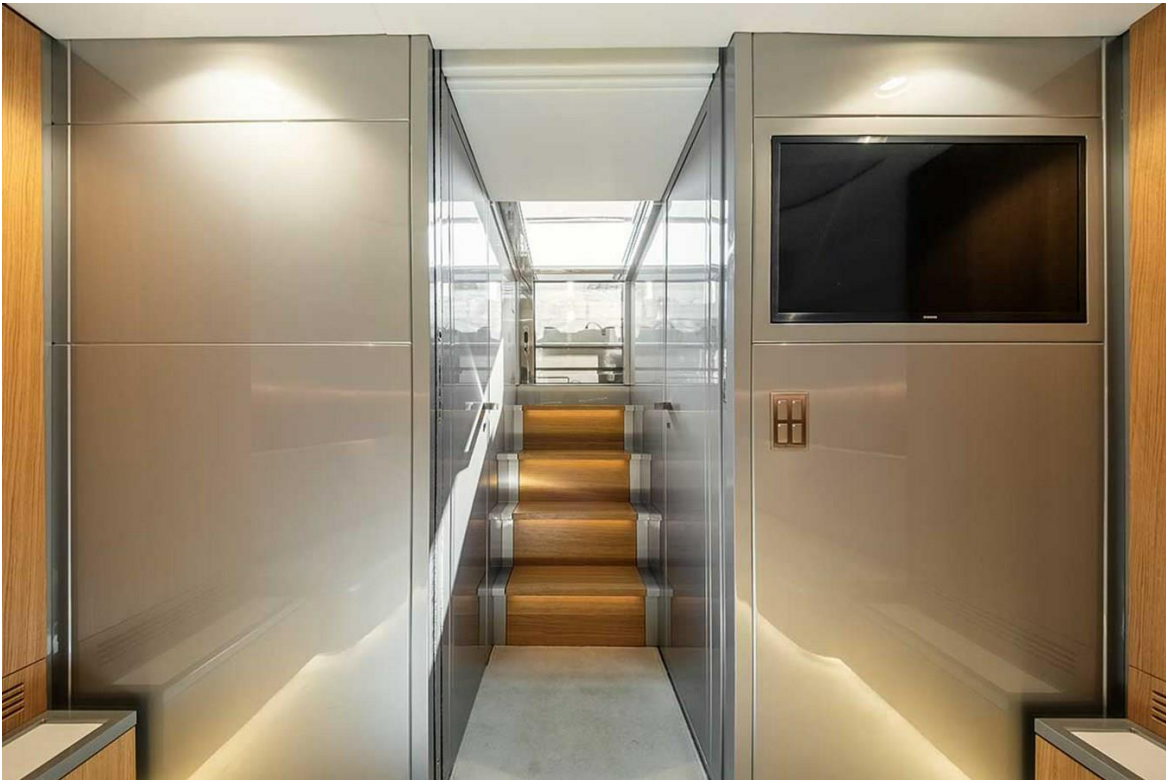
















Machinery Description

- Carbon fibre Hard Top with navigational awnings
- Soft helm enclosure
- Automated side balconies
- Opacmare transformer Platform

ELECTRICAL SYSTEM

- Victron SKYLLA 24V / 100A service battery charger
- Victron BLUE SMART 12V / 15A generator battery charger
- Victron SKYLLA 24V / 30A engine battery charger
- Nautik 12V 140 Ah • Dual terminal service batteries (8)
- Nautik 12V 120 Ah • Dual terminal engine batteries (4)
- Nautik 12V 80 Ah • Dual terminal generator battery (1)

HYDRAULIC SYSTEMS AND PUMPS

- Gianneschi ECOJET 2B 24V P.MAX 3.5 bar or equivalent
- Whale GULPER TOILET PUMP 24v
- Rule A MATIC SWITCH 35°
- Whale UNIVERSAL UF1825 Gianneschi MP/CS0/779 or equivalent

MOORING AND ANCHOR

- Trefoil AISI 316L 30 Kg
- Stainless steel chain Caliber 10 mm • Length 75 m
- Chain wash system
- Lofrans PROJECT 1500
- Cleats in stainless steel
- Fairleads in stainless steel