

CHAMBERLAIN  
YACHTS

UNDER CONSTRUCTION



**LOA:** 167' (50.9m)

**Beam:** 28' (8.53m)

**Max Draft:** 8' (2.44m)

**Clearance:** 50' (15.24m)

**Tonnage:** 495.00

**Speed:** 20 Knots  
23.5 Knots

**Location:** Gulfport, Mississippi  
United States

**VAT Paid:**

**Delivery/Model** 2023

**Year:**

**Builder:** TRINITY

**Type:** Motor Yacht  
Mega Yacht

**Staterooms:** 6

**Fuel Cap:** 8000 Gal

**Water Cap:** 2700 Gal

**Engines:** 2x, MTU, 16V4000, 3650  
HP

**Price:** \$7,607,375 USD

Generated On 4/19/2024 11:57 AM by Chamberlain Yachts International SVC Account

**Chamberlain Yachts  
International**

**Chamberlain Yachts  
International SVC Account**  
**info170520210418@chamberlain-  
yachts-international.com**  
**www.chamberlainyachts.com**

**UNDER CONSTRUCTION**

Page 1 of 12

### Additional Specifications For UNDER CONSTRUCTION:

<b>LOA:</b>	167' (50.9m)	<b>Delivery/Model</b>	2023
<b>Beam:</b>	28' (8.53m)	<b>Year:</b>	
<b>Max Draft:</b>	8' (2.44m)	<b>Year Built:</b>	2023
<b>Hull Material:</b>	Aluminum	<b>Builder:</b>	TRINITY
<b>Superstructure:</b>	Aluminum	<b>Type:</b>	Motor Yacht Mega Yacht
<b>Hull Designer:</b>	Trinity Yacht Design	<b>Engines:</b>	3650 HP,Twin, 2007, Inboard, Diesel, MTU, 16V4000,
<b>Tonnage:</b>	495.00	<b>Staterooms:</b>	6
<b>Range At Cruise Speed:</b>		<b>Captain Cabin:</b>	No
<b>Range At Max Speed:</b>		<b>Classifications:</b>	
<b>Speed:</b>	Cruising 20 Knots Max 23.5 Knots	<b>MCA: Yes</b>	<b>ISM:</b>
<b>Ext Designer:</b>	Trinity Design Group		
<b>Fuel Capacity:</b>	8000 Gal		
<b>Water Capacity:</b>	2700 Gal		
<b>Holding Tank:</b>	300 Gal		
<b>Location:</b>	Gulfport, Mississippi United States		
<b>Price:</b>	\$7,607,375 USD		

## **Description of Vessel and Current Condition**

**167' Aluminum Motoryacht Appraised Value \$7,606,375**

### **Financing Available to Qualified Buyer or Shipyard**

(YACHT IS NEARLY 40% COMPLETED)

Production on this yacht was stopped when the Trinity shipyard was closed. It has been fully maintained in storage in Gulfport, MS until today and recent surveys and inspection reports are available.

Based on production schedules the estimated completion time will be 18 months once the yacht reaches the completion shipyard and is back in production.

The yacht is being constructed under ABS standards and the year of completion will be the year of manufacture on the documentation.

A detailed survey by Pliske Marine Surveyors is available for qualified applicants. The company has considerable experience with surveying Trinity yachts over the years and they completed a condition and valuation survey which is available upon request to qualified applicants.

A recent video inspection report was completed (January 2022) by Tony Rossitto who is a certified ABS metal inspector and well as a licensed surveyor and project manager with extensive experience in this size range.

Walkthrough video by the owner was prepared for builders, with production schedules, and design schedules available.

Bids were received from qualified completion yards US, Greece, and Turkey.

Designed as a luxury six stateroom Aluminum Motoryacht (with elevator service to all four decks) is nearly 40% complete and available for well below the actual cost to date. This is an opportunity for the right buyer. Designed with a top speed of 24 knots, under 500 GRT, and with her Bahamas draft of under 8 feet, this is a great fit for an East Coast yachting family.

In addition to the hull and superstructure, it comes with 2-MTU 16V-4000's @ 3,650 HP (full warranties in effect) each and ZF gears, 2-155kw Northern Lights generators, Dometic 50 Ton AC Chiller, Quantum zero speed stabilizers, central hydraulic system, flybridge davit, garage davit, and a long list of other inventory of parts and pieces.

## **INTERIOR DESCRIPTION**

### **Main Deck –**

The owner's suite is located forward and is full beam. It is followed by the commercial galley, followed by the formal dining area and main salon. Going aft there is an outdoor bar area followed by a seating area with a bench seat and lounge chairs and tables. Note - there is an elevator to all four decks on this yacht.

### **Bridge Deck –**

Forward is a seating area ahead of the helm and a center walkway down to the bow deck which has one of the three tenders stored there. The helm station has side door exits port and starboard, it features a large raised bench seat. Aft of the helm are two cabins – the captain's suite to port is accessed from the helm. The VIP cabin is to starboard and accessed from the hallway. There is a nice owner's lounge aft of that small standup bar and 4 person card table to starboard and an L-shaped settee to port. There is a full entertainment system, Stepping out to the deck there is a huge dining table for 12 and finally a big lounge area with two big sofas, four lounge chairs, and cocktail tables.

### **Sun Deck –**

Lots of room to entertain on this deck with standup bar with four stools, a dinette for 6-7 people, an outdoor kitchen, an enclosed head to starboard, four lounge chairs, and two large forward-facing raised bench seats with tables, and a large tender mounted athwart ship with davit all the way aft.

### **Lower Cabin Deck –**

Generated On 4/19/2024 11:57 AM by Chamberlain Yachts International SVC Account

**Chamberlain Yachts  
International**

**Chamberlain Yachts  
International SVC Account  
info170520210418@chamberlain-  
yachts-international.com  
www.chamberlainyachts.com**

**UNDER CONSTRUCTION**

The main crew area is forward with a dinette/lounge area, two cabins forward with upper and lower berths, each with a private head. Two single berth cabins aft of that with a shared head. In the stern of the boat is the engineer's cabin with upper and lower berth, private head, and desk area.

### **Guest Accommodations –**

There are four full guest suites. Two are king-sized berth cabins and two are twin-berth cabins with Pullman berths as well. The engine compartment is well laid out with room to service all the equipment and systems aboard the yacht. Aft of that is the tender garage with room for a Novurania jet tender and two jet skis. The area can be modified to also serve as a beach club.

### **Changes to Layout –**

There is still time to make some changes to the layout. While the engines and generators are already installed and most bulkheads are already in place you can still make changes at this stage of construction.

## **WHY BUY THIS YACHT?**

**Savings in Time & Money –** When you look at the cost estimates we have received in recent months to complete this yacht you'll see savings in both time and money. It is approximately 40% complete already, and we have received bids from qualified yards in the US, Greece, and Turkey.

Properly managed, this project should be completed for \$25 million including purchasing the yacht, and based on recent sales, that price should be \$10 million or more below the current price for new and late model yachts in this size range with similar engines and equipment.

**The Trinity Brand –** If you are not familiar with the Trinity brand they have built over 60 totally custom megayachts over the past 20 years and you will find them cruising around the world. Trinity attracted owners from industry, sports, and even royalty, and over 60% of their clients at one point were repeat owners which says a lot about how much fun the design and building process was at Trinity. You can learn a lot more about the history of Trinity and see a selection of completed yachts in the attached brochure.

**Global Resale & Charter Market –** Wherever you look up the Trinity brand on the internet (Google, YouTube, Multiple Listing Systems) you will find Trinity yachts showcased. They are offered for sale by the best brokers in the world and you will see sisterships successfully chartering at premium prices in every major port, and most important for any potential buyer, you will see a solid resale history of Trinity yachts in both the North American and in European markets.

**Modern Styling –** When you look at the exterior styling in the drawings and the renderings for this yacht it is current in today's world and there is nothing dated about it. The construction is still at a point when you can make some changes depending on personal preference.

**Speed and Performance –** This yacht has a projected top speed of 24 knots based on the proven design, and you will see Trinity sisterships of similar length that confirm it. In achieving that speed the design team managed to also deliver a hull shape that is comfortable in all sea conditions which is not always the case with fast yachts in this size range.

**Contemporary Interior Design –** While we have recommended the six stateroom floorplan that is included in this listing because of what we know about the resale market, you still have time to customize and make key changes for your particular needs.

## **ENGINES & EQUIPMENT INCLUDED**

### ENGINES, GEARS, AND GENERATORS

2- MTU- 16V 4000 90- 3,750HP @ 2100 RPM, TIER I ENGINES; S/N 527105368 & 527105369

(New Engine Warranty begins at startup)

2- ZF 7640 TRANSMISSIONS WITH 3.826:1 REDUCTION RATIO; S/N 50026324 & 50026325

Generated On 4/19/2024 11:57 AM by Chamberlain Yachts International SVC Account

**Chamberlain Yachts  
International**

**Chamberlain Yachts  
International SVC Account  
info170520210418@chamberlain-  
yachts-international.com  
www.chamberlainyachts.com**

**UNDER CONSTRUCTION**

2- NORTHERN LIGHT 155 KW @ 1500 RPM- 50 CYCLE- SEA WATER COOLED WITH SOUND SHIELDS

**ADDITIONAL EQUIPMENT INCLUDED IN THIS OFFER**

1- 4,000 LB. NAUTICAL STRUCTURES SWIVELING TENDER DAVIT

1- 4,000 LB. NAUTICAL STRUCTURES TELESCOPING GARAGE TENDER DAVIT

1- SET- Gulf Med Marine (Quantum)- Mod QC 1500 two fins 3.0 sq. m. - "Zero Speed"

1- QUANTUM CENTRAL HYDRAULIC SYSTEM

1- WINEL SLIDING WATER TIGHT DOOR

1 - 50 TON DOMETIC WATER COOLED CHILLER PLANT

1 -CONTAINER FULL OF MISCELLANEOUS MTU and boat PARTS AND PIECES

**SUPPORT TEAM AVAILABLE**

One of the concerns people have when taking over any yacht project like this that has been shut down is who do I get to help me get the yacht finished including design work and the actual construction? We have the right answers.

**Design and Engineering** – You'll be glad to know that the original team that designed this particular yacht and the other Trinity's as well is available to help complete the remaining drawings. Everyone who was involved in this yacht from the CEO on down wants to see this yacht successfully completed and be part of the history of Trinity. We can provide whatever help you need to find the right people to get this boat back into production as fast as possible regardless of where you decide to send the yacht for completion.

**Interior Designer** – Some of the best interior design firms in the world have worked on Trinity yachts over the years and they will take the time to create any drawings needed to complete the yacht.

**Completion Options** - We have received bid proposals from five qualified shipyards that are interested in making a final presentation to a buyer and we have focused on yards with proven experience in this size range that are located in areas that have the key suppliers needed to make it all happen. The yards are located in the US, Greece, and Turkey. You're talking about a project in the \$15-20 million range so this is a huge opportunity in the refit market for the right facility. The fact that the yacht can go back into production as soon as it arrives makes it even more desirable for the right yard.

**CURRENT STATUS**

The yacht is in storage in Gulfport, Mississippi. It is secure and checked regularly. The MTU engines are serviced and under full new warranty coverage that begins when the yacht is completed. The yacht can remain in its current location as long as necessary for you to make the arrangements for completion.

**QUALIFIED BUYER**

The seller's only request is that we take the time to make sure any offers received are from qualified applicants who meet the three obvious criteria – they have the money to complete the project properly, they understand the completion process, and they have a plan to make it a success.

The last thing we want is to see someone get in over their head. The owner is prepared to do everything possible on his end to make this a success for everyone involved.

One thing we can assure you, you won't find yourself standing alone wondering how you got into this project. Some amazing people are on standby to help you!

Generated On 4/19/2024 11:57 AM by Chamberlain Yachts International SVC Account

**Chamberlain Yachts  
International**

**Chamberlain Yachts  
International SVC Account  
info170520210418@chamberlain-  
yachts-international.com  
www.chamberlainyachts.com**

**UNDER CONSTRUCTION**

Page 5 of 12

T-056 rendering 1



T-056 rendering 2



Generated On 4/19/2024 11:57 AM by Chamberlain Yachts International SVC Account

**Chamberlain Yachts  
International**

**Chamberlain Yachts  
International SVC Account**  
**info170520210418@chamberlain-  
yachts-international.com**  
**www.chamberlainyachts.com**

**UNDER CONSTRUCTION**

Page 6 of 12



## T-056 Rendering -4



263



Generated On 4/19/2024 11:57 AM by Chamberlain Yachts International SVC Account

**Chamberlain Yachts  
International**

**Chamberlain Yachts  
International SVC Account**  
**info170520210418@chamberlain-  
yachts-international.com**  
**www.chamberlainyachts.com**

**UNDER CONSTRUCTION**

Page 7 of 12



DSC00704





DSC00706



P1000791



Generated On 4/19/2024 11:57 AM by Chamberlain Yachts International SVC Account

**Chamberlain Yachts  
International**

**Chamberlain Yachts  
International SVC Account**  
**info170520210418@chamberlain-  
yachts-international.com**  
**www.chamberlainyachts.com**

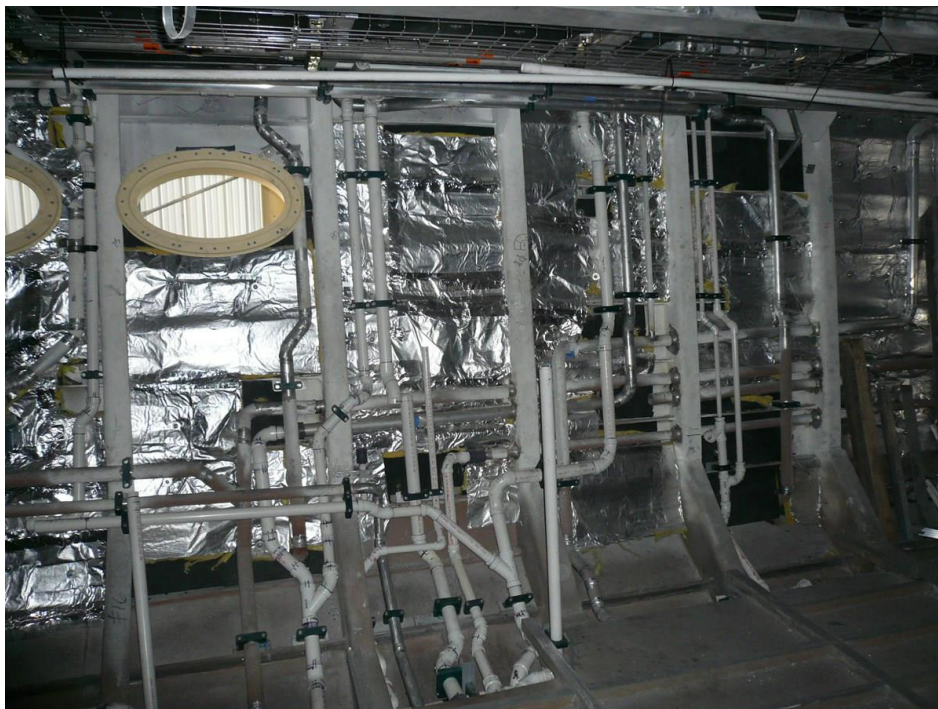
**UNDER CONSTRUCTION**

Page 9 of 12

P1000794



P1000795





P1000799



T-056 rendering -3



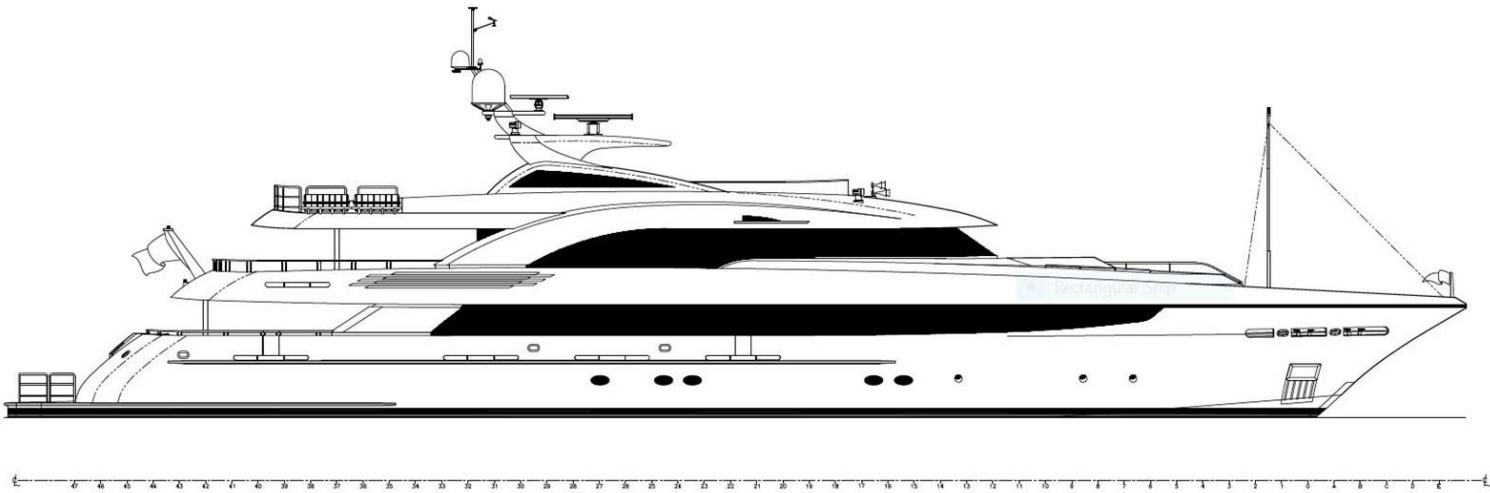
Generated On 4/19/2024 11:57 AM by Chamberlain Yachts International SVC Account

**Chamberlain Yachts  
International**

**Chamberlain Yachts  
International SVC Account**  
**info170520210418@chamberlain-  
yachts-international.com**  
**www.chamberlainyachts.com**

**UNDER CONSTRUCTION**

Drawing Profile for upload



Generated On 4/19/2024 11:57 AM by Chamberlain Yachts International SVC Account