



Type	Cruising Yacht	Classification	--
Top	--	Class Type	--
Model	Virtus	Builder	RIVA YACHT
Manuf. Year	2016	Naval Architect	--
Refit Year	--	Interior Design	--
LOA	63' (19.2m)	Hull	Fiberglass
Beam	15' 8" (4.78m)	Deck	--
Draft Min/Max	-- / 5' 2" (1.58m)	Engines	2x, MAN, 1360 HP
GRT	71209 Lbs	Max Speed	40.5 Knots
Fuel	845 Gal	Cruise Speed	35 Knots
Water	174 Gal	Range	--
Flag	--	Accommodations	3 strms

ASKING PRICE: \$1,995,000 USD

2_2016 63ft Riva 63 Virtus



3_2016 63ft Riva 63 Virtus



4_2016 63ft Riva 63 Virtus



5_2016 63ft Riva 63 Virtus



6_2016 63ft Riva 63 Virtus



7_2016 63ft Riva 63 Virtus



8_2016 63ft Riva 63 Virtus



9_2016 63ft Riva 63 Virtus



10_2016 63ft Riva 63 Virtus



11_2016 63ft Riva 63 Virtus



12_2016 63ft Riva 63 Virtus



13_2016 63ft Riva 63 Virtus



14_2016 63ft Riva 63 Virtus



15_2016 63ft Riva 63 Virtus



16_2016 63ft Riva 63 Virtus



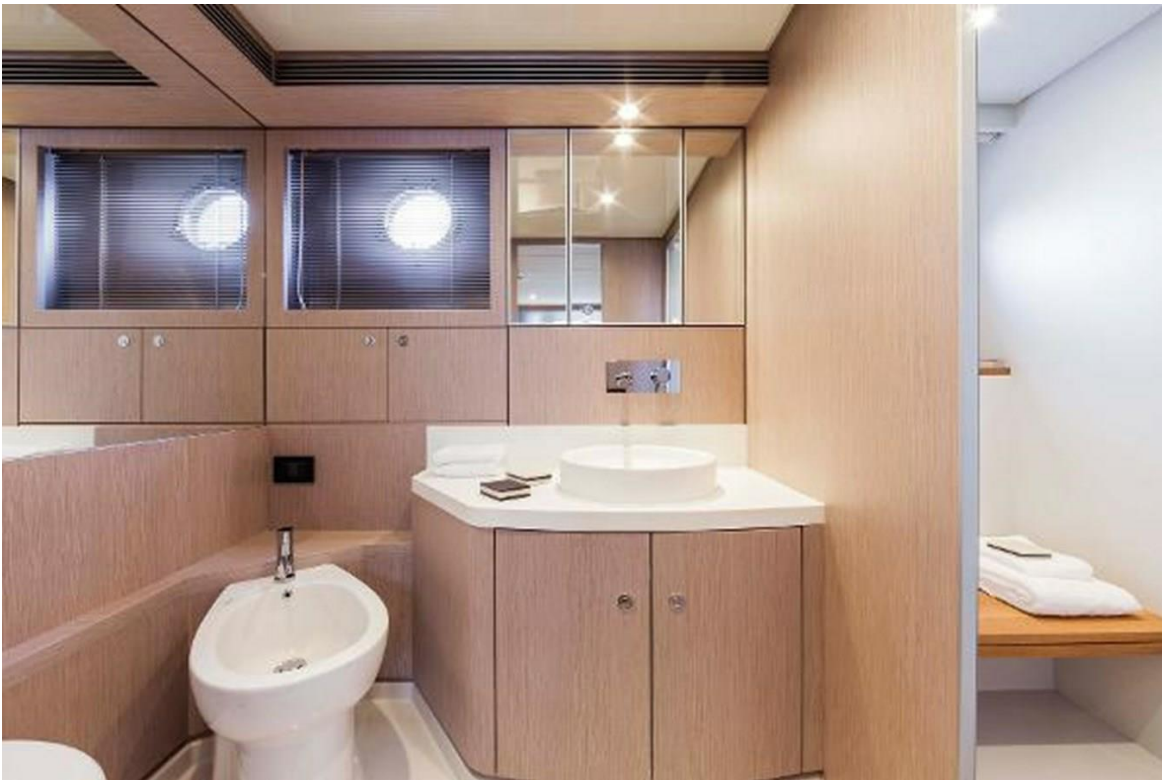
17_2016 63ft Riva 63 Virtus



18_2016 63ft Riva 63 Virtus



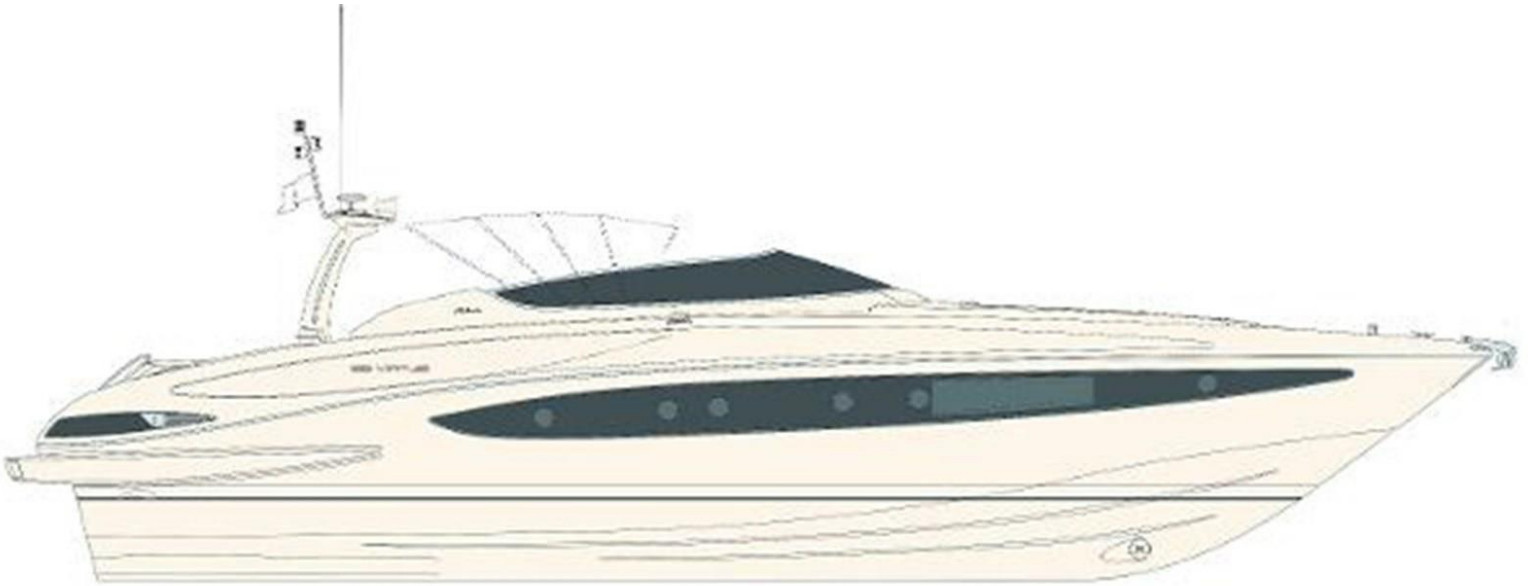
19_2016 63ft Riva 63 Virtus



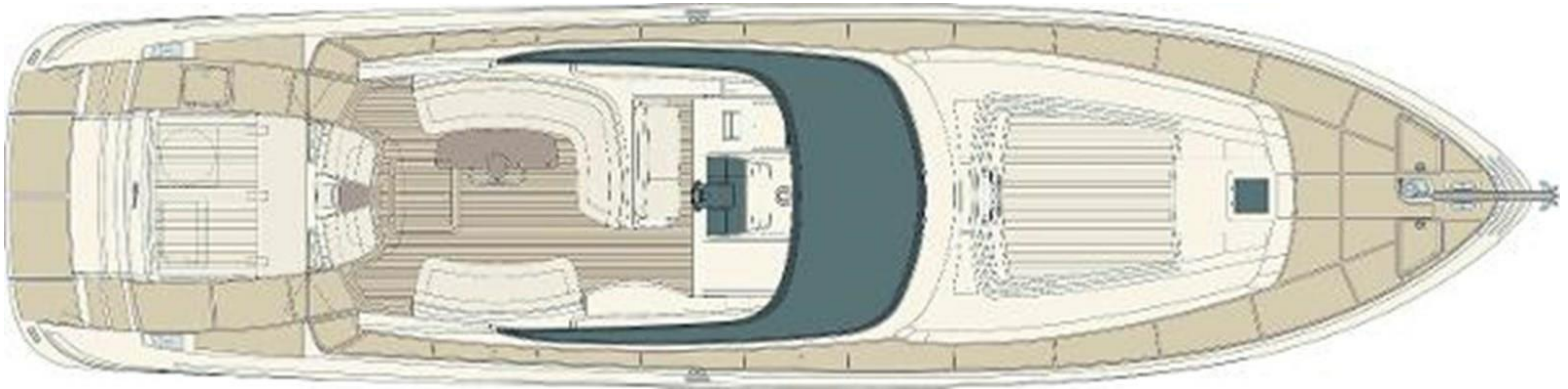
20_2016 63ft Riva 63 Virtus



21_2016 63ft Riva 63 Virtus



22_2016 63ft Riva 63 Virtus



23_2016 63ft Riva 63 Virtus



Manufacturer Provided Description

With this yacht, Riva has reinterpreted the concept of an open yacht characterized by a typical Mediterranean style while preserving the unmistakable elegance of the entire range: class, charm and a sober look. Designed with an eye to the outer lines of the Vertigo - a very successful classical model in Riva's range - the 63' Virtus also draws inspiration from the Rivale's strong personality, while also ensuring more spacious areas that guarantee excellent livability and total onboard comfort. This last-generation open craft has been conceived as a sporty yacht, created for an Owner that wants to experience the sea first-hand.

Included Options

- London Grey Hull Color
- Stern Thruster
- Washer/Dryer Understairs USA
- Upgraded Led Lights (Int/Ext) All Over the Boat
- Extra Loudspeakers in Cockpit USA
- Antenna TV SAT Kvh Tv5 with USA Receiver
- Inverter MasterVolt 2500w/120v 60Hz Add
- Radome Garmin Radar
- Simrad EcoSounder Interface with Display USA on Bridge Monitor
- Additional 8012 w/ Wide Garmin Radar/Plotter in Main Helm
- (3) Supervision Video Cameras in Engine Room
- White Lights Underwater on Transom
- Upholstery: Technical Fabric (Mambo)
- Additional Drawer-Fridge in the Cockpit
- Additional International Decoder For Master Cabin (To be Combined with Kvh Tv5 Sat. Ant)
- Upgraded Wooden Flooring in Bathrooms
- 22" TV Set with CD-DVD Mini-HiFi Upgrade in VIP Cabin
- 22" TV Set with CD-DVD Mini-HiFi Upgrade in Guest Cabin with Modified Furnishings
- Grill in the Cockpit
- Watermaker 65Lt/H Idromar 60Hz
- Upgraded Decor
- Battery Charger
- Glendinning 100A - 4 Poli (20Mt)
- Remote Control For the Glendinning
- Shore Socket TV - Telephone
- Exportation Cost
- Teak on the Swimming Platform, Side Walkways (at Bow and Stern), Steps
- US Lower Handrail with Restrictions
- Bow Sun Pad
- Manual Bimini Top
- Stainless Steel Handrails

Disclaimer

The Company offers the details of this vessel in good faith but cannot guarantee or warrant the accuracy of this information nor warrant the condition of the vessel. A buyer should instruct his agents, or his surveyors, to investigate such details as the buyer desires validated. This vessel is offered subject to prior sale, price change, or withdrawal without notice.