



OVERVIEW



TYPE	Motor	DESIGNER	N/A
LENGTH	65' (19.81m)	SPEED	
BEAM		ENGINES	2x, Caterpillar, C-18,
DRAFT		RANGE	
BUILDER	CATAMARAN	FLAG	N/A
HULL MATERIAL	Fiberglass	TAXES PAID	N/A

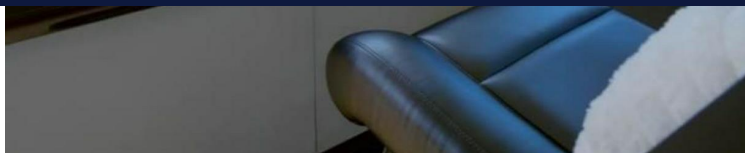


2020 Axcell 650 power catamaran

ASKING PRICE \$1,900,000 USD

TJB SUPER YACHTS LTD SVC ACCOUNT M: T: E: INFO120120220343@TJB-SUPER-YACHTS-LTD.COM





2020 Axcell 650 power catamaran



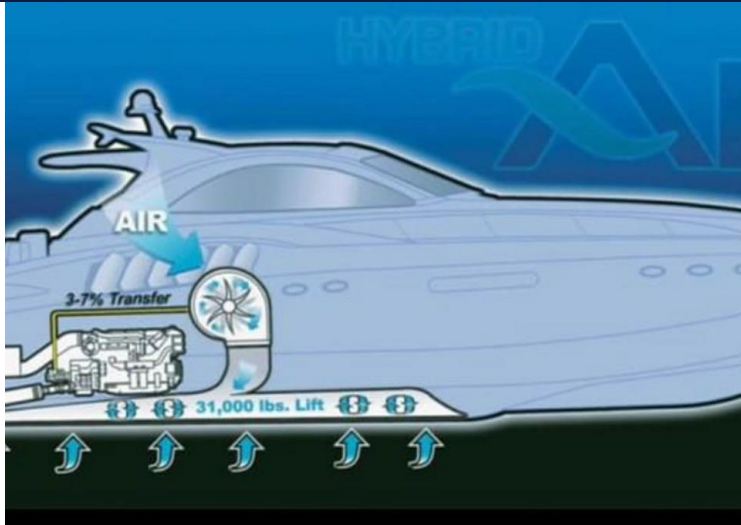
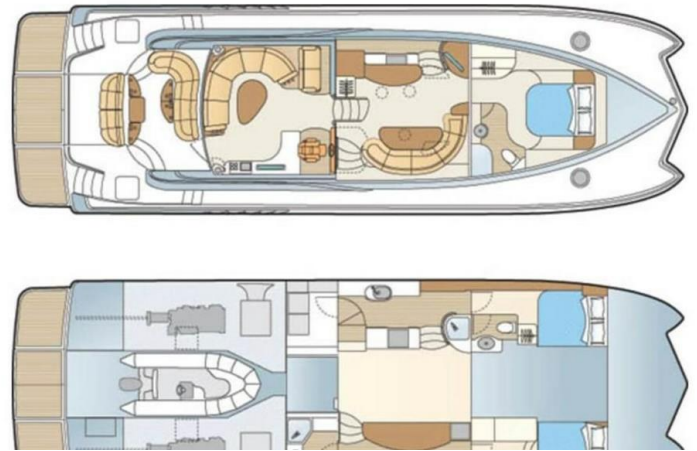


Illustration by Steve Karp



DETAILED SPECIFICATIONS



MAIN CHARACTERISTICS

TYPE	MOTOR
COUNTRY OF REGISTRY	N/A
PORT OF REGISTRY BUILT	2020
REFIT	N/A
BUILDER	CATAMARAN
NAVAL ARCHITECH	N/A
EXTERIOR DESIGNER	N/A
INTERIOR DESIGNER	N/A
LWL	N/A
BEAM	
MAX DRAFT	
CONSTRUCTION	N/A
HELIDECKS/HANGER	N/A



2020 Axcell 650 power catamaran

Overview

This catamaran is tailored for the boating enthusiast who will not compromise on either performance or comfort.

With its advanced composite construction, the Axcell 650 boasts a strong yet lightweight structure that contributes to its exceptional speed and fuel efficiency. Powered by twin CAT C-18 diesels (400hrs), coupled with Arneson top system surface drives for optimum performance. The twin hull design ensures stability and smooth handling in diverse sea conditions, providing a comfortable and safe journey.

The expansive deck plan offers ample social spaces, including a spacious cockpit area perfect for entertaining. The interiors bathed in natural light thanks to panoramic windows, showcases a modern and sleek design. Accommodations typically include (3) staterooms with en-suite facilities, (1) community head (washroom) a state-of-the-art galley, and luxurious salon areas, ensuring that every voyage is enjoyed in comfort and style.

Commissioned 2020 refit in 2022.

New top system Surface drives, joystick, easy set system, easy set screen, hydraulic tie bar, lever controls, electronic controls, hydraulic controls, Aventics control system

Recent improvements and upgrades.

- NewProp speed
- Surface piercing 'Veem surf' propellers reworked
- New Garmin electronics screens, gps, radar sonar, new dashboard, flir, HD sat tv, high speed Wi-Fi routing system, wiring
- New lighting strike plate system
- New fusion head unit stereo New AC chiller and control system 96k btu
- New driver and Ramp switch
- Redesigned hovercraft blower system
- Outdoor Upholstery
- New amps and wet sounds outdoor speakers
- Updated tender garage that holds a 15 foot tender.

Disclaimer

The company offers the details of this vessel in good faith but cannot guarantee or warrant the accuracy of this information nor warrant the condition of the vessel. A buyer should instruct their agents, or their surveyors, to investigate such details as the buyer desires validated. This vessel is offered subject to prior sale, price change, withdrawal without notice, and tax when applicable.



2020 Axcell 650 power catamaran



2020 Axcell 650 power catamaran

+44 (0) 207 183 4393 • ENQUIRIES@TJBSUPERYACHTS.COM

24.11 CODA STUDIOS, 189 MUNSTER ROAD, FULHAM, LONDON, SW6 6AW, UK