



## OVERVIEW



<b>TYPE</b>	Motor	<b>DESIGNER</b>	N/A
<b>LENGTH</b>	60' 1" (18.3m)	<b>SPEED</b>	18 Knots
<b>BEAM</b>	16' (4.88m)	<b>ENGINES</b>	2x, Cummings, 600 HP
<b>DRAFT</b>	7' 7" (2.3m)	<b>RANGE</b>	
<b>BUILDER</b>	BENETEAU	<b>FLAG</b>	Marshall Islands
<b>HULL MATERIAL</b>	GRP	<b>TAXES PAID</b>	VAT Unpaid



ASKING PRICE \$933,614 USD

TJB SUPER YACHTS LTD SVC ACCOUNT M: T: E: INFO120120220343@TJB-SUPER-YACHTS-LTD.COM







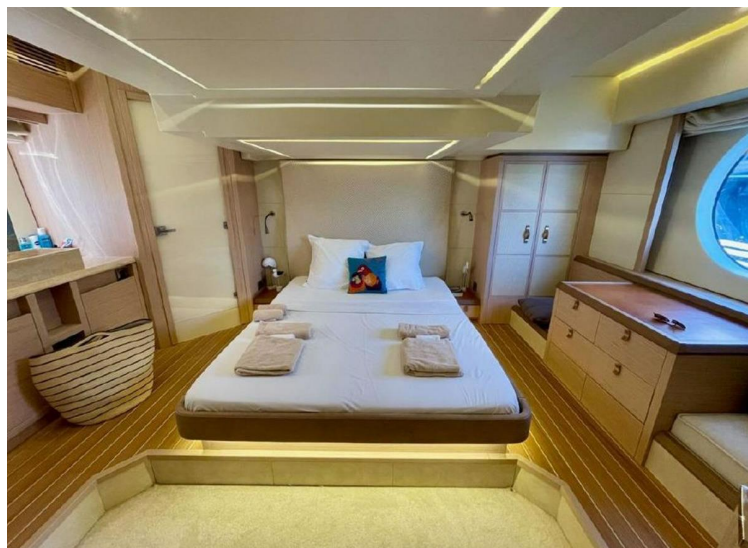




















## DETAILED SPECIFICATIONS



### MAIN CHARACTERISTICS

TYPE	MOTOR
COUNTRY OF REGISTRY	MARSHALL ISLANDS
PORT OF REGISTRY BUILT	2014
REFIT	N/A
BUILDER	BENETEAU
NAVAL ARCHITECH	N/A
EXTERIOR DESIGNER	N/A
INTERIOR DESIGNER	N/A
LWL	N/A
BEAM	16' (4.88M)
MAX DRAFT	7' 7" (2.3M)
CONSTRUCTION	N/A
HELIDECKS/HANGER	N/A

### Disclaimer

The company offers the details of this vessel in good faith but cannot guarantee or warrant the accuracy of this information nor warrant the condition of the vessel. A buyer should instruct their agents, or their surveyors, to investigate such details as the buyer desires validated. This vessel is offered subject to prior sale, price change, withdrawal without notice, and tax when applicable.



ANAHITA II





# ANAHITA II

+44 (0) 207 183 4393 • [ENQUIRIES@TJBSUPERYACHTS.COM](mailto:ENQUIRIES@TJBSUPERYACHTS.COM)

24.11 CODA STUDIOS, 189 MUNSTER ROAD, FULHAM, LONDON, SW6 6AW, UK