



Type	Motor Yacht	Classification	--
Top	--	Class Type	--
Model	Princess 82	Builder	PRINCESS YACHTS
Manuf. Year	2016	Naval Architect	--
Refit Year	--	Interior Design	Princess Yachts
LOA	83' 8" (25.5m)	Hull	GRP
Beam	18' 10" (5.74m)	Deck	--
Draft Min/Max	-- / 5' 9" (1.75m)	Engines	2x, Caterpillar, C32A, 1723 HP
GRT	101400 Lbs	Max Speed	34 Knots
Fuel	6442 L (1701.8 Gal)	Cruise Speed	--
Water	1386 L (366.14 Gal)	Range	--
Flag	Jersey	Accommodations	8 in 4 strms 2 crew

ASKING PRICE: (\$2,292,600 USD est.)
€1,990,000 EUR





Main Salon



Main Salon



Helm Station



Galley



Master cabin



Master cabin



Master bathroom



Guest (double)



Guest (twin)



Forward





Flybridge



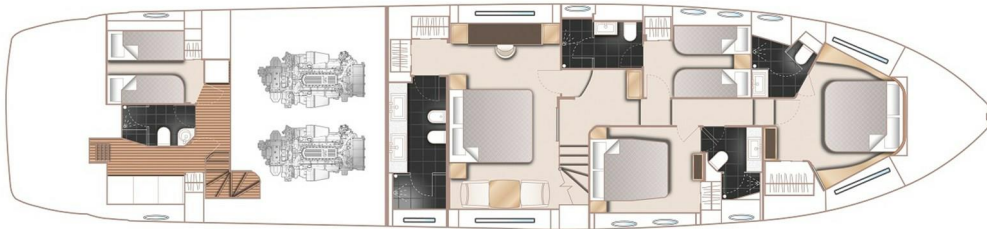
Flybridge



Main Deck



Lower Deck



EQUIPMENT

HYDRAULIC

- Hydraulic bowthruster in place of standard
- Hydraulic sternthruster
- Opacmare flybridge crane

STABILISATION

- TRAC Star 7.5X fin stabilizer system with inline Parker silencer (only available if 'hydraulic system' is also specified)
- This system is designed to provide roll control at speeds above 12 knots as well as zero speed stabilisation.
- Bow and Stern thrusters feature fully proportional speed control. When the main engines are turned off the hydraulics are powered by an electric motor for which the standard generator is suitable.

INTERIOR FURNITURE

- Alba Oak interior wood Satin finish (galley & wheelhouse floors are Alba Haze as standard)

LAYOUT

- Electrical up/down bulkhead behind helm position
- Bidet in Master Stateroom bathroom
- Crew utility area fitted out as crew mess with seating area, table, sink, microwave oven, fridge/freezer and air-conditioning (not possible if Gyro stabilisers are specified)

GALLEY

- Perso Avorio granite galley worktop

BATHROOMS

- Bianco Gioia marble FLOOR + WORKSURFACE
- Mosaic tiles to Port & Starboard bathroom shower cubicle

COLOUR SCHEME

- Platinum II Leather upholstery in saloon (band A)

DECK HARDWARE

- Spa bath on flybridge (includes increased calorifier and water pump capacity)
- Side entry gates to aft port & starboard side decks (in addition to standard passerelle)
- Stainless steel boarding ladder supplied loose with deck mounting sockets fitted port and starboard sides (assists boarding side of boat from pontoon)
- Dinghy chocks on bathing platform

GENERATOR

- Second 13.5 kW/50hz ONAN generator

ELECTRICAL

- Continental 220v/240v sockets
- Additional refrigerator fitted below the worktop in galley lobby (24v/240v, 150 litre). Not available if wine cooler or optional day head is specified
- Icemaker fitted in flybridge wetbar (in addition to standard icemaker in saloon bar area)
- Freshwater maker (190 litres/hour) complete with remote instrumentation
- Underwater transom lights (4 LUMISHORE SMX95 Blue)
- Optional saloon table lamps
- 2 x Porta Romana GLB08 Coffee Bean Charcoal lamp with 18" Straight Oval Shade in Putty silk
- Optional Master Stateroom portside vanity unit table lamp
- 1 x Contardi Athena TA (Dark stained wood with black nickel plate & frame with shade in Cream Trevira (ribbed slate)

AUDIO VISUAL & COMMUNICATIONS

- Forward Stateroom – Harman Kardon 2.1 Blu-ray (with Bluetooth connectivity) and KEF speakers
- Port Guest Cabin – 28" LED TV with a Fusion MS-AV700i Radio/DVD/MP3 player with Bluetooth facility
- Starboard Guest Cabin – 28" LED TV with a Fusion MS-AV700i Radio/DVD/MP3 player with Bluetooth facility
- Exterior upgrade
- Flybridge also linked to the saloon audio system
- Cockpit – Waterproof speakers linked to the flybridge audio system, with separate local control (recommended if hard top fitted)
- Foredeck seating walk-through area – waterproof speakers linked to the flybridge audio system, with separate local control
- KVH (M7) Tracvision (linked to all television sets)
- Dummy KVH (M7) dome
- Satellite TV decoder (common interface) (each). Decoders are required with each television if different channels are to be required at the same time

NAVIGATION

- Raymarine e165 (15.4") multifunction brilliant colour display with 2 screens at lower helm and 2 screens at upper helm (4 screens in all) in place of standard 3 x 12.1" screens
- European version plotter
- International VHF

EXTERIOR UPHOLSTERY / CANVAS / COVERS

- Bimini top (electro-hydraulically powered with overhead LED lighting and switched from flybridge console) – Charcoal Grey sunbrella canvas
- Foredeck sun awning
- Cockpit & flybridge upholstery including helm seats and sunbed cushions – Vinyl (white or vanilla) with Movida contrast piping & stitching
- Foredeck seating/sunbed cushions in Vinyl (white or vanilla) with Movida contrast to upstand of cushions