

BABB YACHTS

ANNA J



LOA:	162' (49.38m)	Delivery/Model	1994
Beam:	29' 3" (8.92m)	Year:	
Max Draft:	7' 6" (2.29m)	Builder:	OCEANCO
Tonnage:	475.00	Type:	Motor Yacht
Speed:	17 Knots 23 Knots	Staterooms:	6
Flag:	TBA	Fuel Cap:	13596 Gal
Location:	N/A, N/A Netherlands	Water Cap:	5737 Gal
VAT Paid:	No Duty Paid	Engines:	2x, MTU, 16V396 TE94, 3000 HP
		Price:	(\$6,270,192 USD est.) €5,900,000 EUR

NOT AVAILABLE FOR SALE TO U.S RESIDENTS WHILE IN U.S. WATERS.

Additional Specifications For ANNA J:

LOA:	162' (49.38m)	Delivery/Model	1994
Beam:	29' 3" (8.92m)	Year:	
Max Draft:	7' 6" (2.29m)	Year Built:	1994
Hull Material:	Aluminum	Refit Year:	2019
Hull Config:	Semi-Displacement	Builder:	OCEANCO
Hull Designer:	Oceanco	Type:	Motor Yacht
Tonnage:	475.00	Engines:	3000 HP, Twin, Diesel, MTU, 16V396 TE94,
Range At Cruise	3700	Staterooms:	6
Speed:		Sleeps:	12
Range At Max		Crew Berths:	10
Speed:		Captain Cabin:	Yes
Speed:	Cruising 17 Knots	Classifications:	American Bureau of Shipping
	Max 23 Knots		AMS
Int Designer:	Manhattan Style	MCA:	ISM:
Ext Designer:	Richard Hein/The A Group		
Fuel Capacity:	13596 Gal		
Water Capacity:	5737 Gal		
Holding Tank:	288 Gal		
Flag:	TBA		
Location:	N/A, N/A		
	Netherlands		
Price:	(\$6,270,192 USD est.)		
	€5,900,000 EUR		
Tax Status:	No Duty Paid		

Overview

*Not available for sale to US residents while in US waters.

This serial yacht owner purchased ANNA J, re-located her in Holland, and immediately embarked on a 3+ year methodical refit. A mechanical and exterior refit, along with a full paint job has now been completed. The 4-meter extension, constructed under the watchful eye of Naval Architects "Van Dorrestejn Design" and handcrafted by Dutch Shipbuilders, now gives ANNA J a wonderfully balanced profile. The minimalist interior designed by "Manhattan Style" gives a very fresh and contemporary feel.

From the very tip of her proud and new communication mast to the bottom of her keel, all have been painted, inspected, repaired, or replaced. The engine room now gleams, bristling with new or serviced machinery, a very different story compared to when she was purchased. The refit is complemented by 2 x New Castoldi Jet tenders 21'x 16'. They set the tone for the quality of this in-depth refit. (tenders available via separate negotiation)

This pedigree OCEANCO Super Yacht, after the extensive rework is now beautifully balanced in her profile, importantly the extension was designed so ANNA J comes in under 50m and 500GT. Naiad Fin stabilizers provide a smooth ride underway, and the addition of 4 x Zero Speed Gyro stabilizers ensure a good night's sleep at anchor.

An excel spreadsheet on the refit is available upon request.

Accommodations

ANNA J's flexible layout consists of a large open plan Owner stateroom is positioned forward on the main deck with the entrance on the starboard side. The cabin is fitted with a king size bed and ensuite shower and bathroom including a Jacuzzi, twin his and hers sinks and is finished in stunning marble.

Guest accommodation includes 2 spacious VIP cabins with large double beds and an ensuite bathroom with a Jacuzzi. The cabin is richly appointed with fine fabric covered bulkheads, curtains and fitted carpets. These two cabins can be converted into one full beam VIP stateroom. Twin accommodations include 2 twin cabins both with ensuite bathrooms. On the bridge deck there is a 6th guest/staff ensuite double cabin.

Crew

- 1 x double Captain's cabin with ensuite bathroom
- 4 x bunk cabins each with ensuite bathroom

Galley and Laundry Equipment

Main Galley

- 2 x Gaggenau Fridges
- 2 x Gaggenau Freezers
- 2 x Miele Ovens
- 1 x Miele Ceramic Hob
- 1 x Miele Electric Grill
- 1 x Miele Dish Washer
- 1 x Gaggenau Air Extractor Fan and Service Lift

Laundry

- 2 x Professional Miele Washing Machines
- 2 x Miele Dryers
- 1 x Iron Stirella Pro
- 1 x Miele Electronic Roll Press

Sundeck

- 1 x Grill

Main Salon Pantry

- 1 x Miele Dishwasher
- 1 x Miele Fridge
- 1 x Miele Freezer
- 1 x Gaggenau Microwave Oven
- 1 x Gaggenau Coffee Maker
- 1 x Gaggenau Ice Maker
- 1 x Gaggenau Ceramic Hob

Deck Equipment

- Anchor Windlass Muir Engineering
- Aft Warping Capstans Muir Vertical Capstans VHS 5000
- Tender & Rescue Davits 1 x Motomar Type B passerelle

Entertainment Systems

- Stereo/Hi-Fi 7 x CD Players
- 6 x Sony Mini Hi-Fi Systems
- TV Seatel Satellite Tracking system
- Sat TV, Echostar and Sky Digibox Satellite TV receiver and decoders
- 12 x TV sets in the accommodation areas
- 9 x DVD player

Main Machinery

- Main Engines: 2 x MTU 16V396TE94, 3000hp engines
- Engine hours: Since W5+; Port 10, Stbd 10
- Props: 2 x 5-bladed propellers
- Generators: 3 x John Deer 6068TF001, 66 KW @ 1,500 rpm, coupled to Northern Light M6414T alternators
- Generator hours SMOH; Port 19, Center 11, Stbd 13
- Watermakers: 2 x HEM producing 8,000 Litres per day
- Bow thrusters: HYDROMAT HBT GF 6090 75Kw
- NAIAD Stabilizers
- Fuel Treatment: Alfa Laval System
- 3 x Marine Air MCW144K HMCP20K air conditioning units

Communication and Navigational Equipment

- Radio Telephones 1 x HF SSB radio system
- VHF 3 x VHF stations fitted at the main and flybridge steering positions
- 8 X ICOM VHF portable units
- SATCOM 1 x INMARSAT Thrane & Thrane TT3606G
- 1 x Mini M and Fleet 55 Thrane & Thrane
- 1 x VSAT for Internet
- Autopilot 1 x C Plath Navipilot V – Gryo Navigator
- Compass 1 x Riviera Magnetic Compass
- 1 x G Plath Gyro Stabilised Compass
- GPS 1 x Simrad multisync plotter
- 1 x Simrad GN33 chart plotter
- 1 x Furuno GP32
- Radar 1 x Furuno Arpa 92 nm range
- 1 x Simrad RA 54, 64 nm range
- NAVETEX 1 x Furuno NX500
- Speed Log & Fish Finder Furuno FCV 663
- Wind Speed & Direction 2 x B&G Hydra 2 with depth meter function

Safety and Security Equipment

Safety

- 32 x Life jackets
- 2 x Viking Life Saving 16 man
- 1 x Viking Life Saving 8 man

Firefighting Equipment

- 5 x 45kg CO2 cylinders
- 7 x 6kg & 17 x 2kg dry powder extinguishers in the accommodation.
- 4 x 5kg & 2 x 1kg CO2 extinguishers in the engine room.
- 2 x 6kg Foam
- 2 x 1kg Halon

Security

- Panasonic CCTV System

Generated On 4/17/2024 10:14 AM by Babb Yachts

Tenders and Toys

- 1 x Castoldi 21' Jet (new)
- 1 x Castoldi 16' Jet (new)

Main Salon



Main Salon



Main Salon



Dining Area



Dining Area



Owner Stateroom Hallway



Owner Stateroom



VIP Stateroom



Skylounge



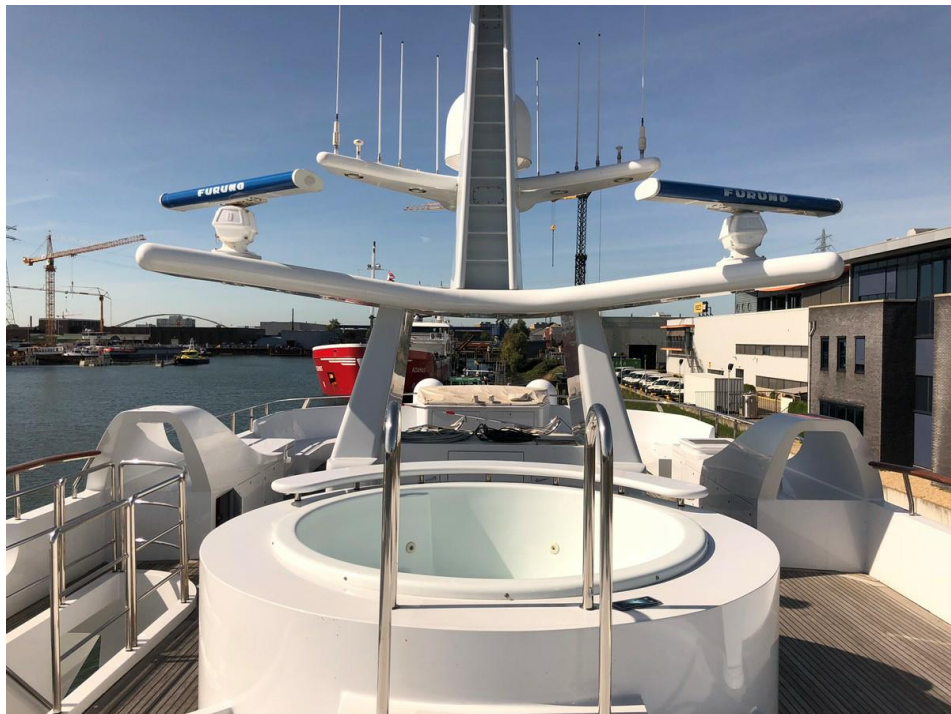
Skylounge



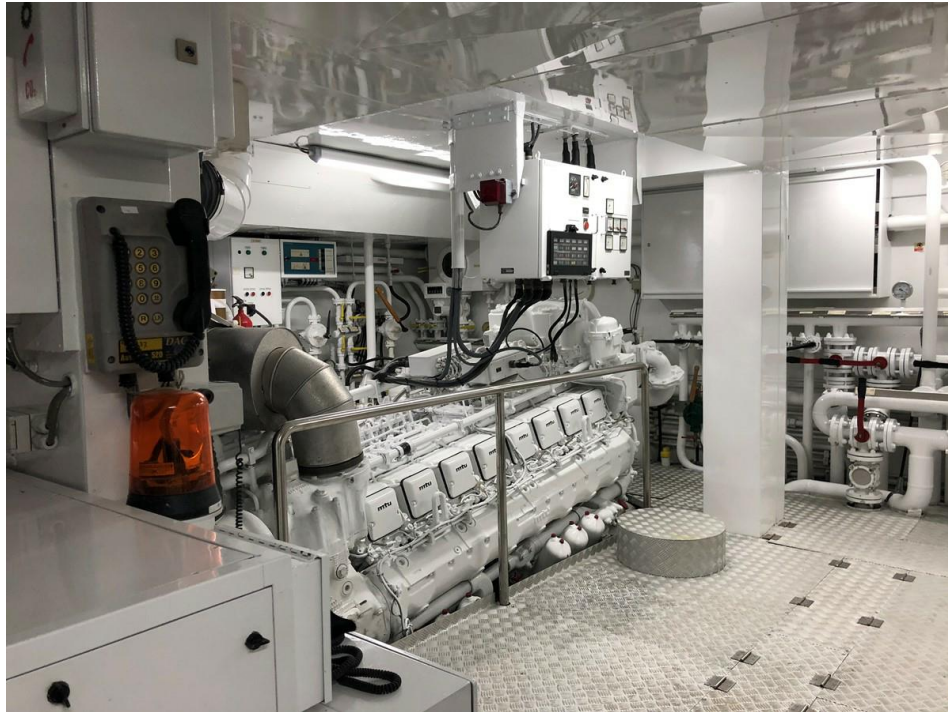
Skylounge



Jacuzzi



Engine Room



Port Bow Profile



Aerial Upper Deck



Port Bow Profile



The image displays a series of architectural drawings for the Van Der Stoep 400 yacht, arranged vertically. From top to bottom, the drawings are:

- Side Elevation:** A perspective view of the yacht's exterior, showing its sleek, modern design with multiple decks and a prominent cabin structure.
- Longitudinal Section:** A cross-section view of the yacht, illustrating the internal layout, including the engine room, fuel tank, and various compartments.
- Deck Plans:** A series of five detailed floor plans for the yacht's decks, labeled from top to bottom:
 - Foredeck:** The front-most deck, featuring a large open area and a small cabin structure.
 - Deck:** The main deck, showing a large open area with a central cabin structure and various seating areas.
 - Bridge Deck:** The deck containing the yacht's command center, including the helm station and navigation equipment.
 - Main Deck:** The central deck, featuring a large open area with a central cabin structure and various seating areas.
 - Lower Deck:** The bottom-most deck, showing a large open area with a central cabin structure and various seating areas.

At the bottom right of the image, there is a small table with technical specifications and a logo for Van Der Stoep Design.

Technical Specifications	
Model:	400
Length:	40.00 m
Beam:	8.00 m
Max. Draft:	2.00 m
Max. Speed:	30.00 knots
Max. Range:	1000.00 miles
Max. Fuel Capacity:	1000.00 gallons
Max. Passenger Capacity:	12
Max. Crew Capacity:	5
Max. Horsepower:	1000.00 HP
Max. Torque:	1000.00 ft-lb
Max. RPM:	3000
Max. Fuel Consumption:	100.00 gallons/hour
Max. Oil Consumption:	10.00 gallons/hour
Max. Water Consumption:	100.00 gallons/hour
Max. Air Consumption:	100.00 cubic feet/hour
Max. Exhaust Gas Temperature:	1000.00 °F
Max. Exhaust Gas Pressure:	10.00 psi
Max. Exhaust Gas Flow:	100.00 cubic feet/hour
Max. Exhaust Gas Velocity:	100.00 ft/min
Max. Exhaust Gas Density:	10.00 lb/cubic foot
Max. Exhaust Gas Viscosity:	10.00 centipoise
Max. Exhaust Gas Specific Gravity:	10.00
Max. Exhaust Gas Molecular Weight:	10.00
Max. Exhaust Gas Heat Capacity:	10.00 BTU/lb-°F
Max. Exhaust Gas Thermal Conductivity:	10.00 BTU/ft-hr-°F
Max. Exhaust Gas Thermal Diffusivity:	10.00 ft²/hr
Max. Exhaust Gas Prandtl Number:	10.00
Max. Exhaust Gas Schmidt Number:	10.00
Max. Exhaust Gas Lewis Number:	10.00
Max. Exhaust Gas Zeldovich Number:	10.00
Max. Exhaust Gas Damköhler Number:	10.00
Max. Exhaust Gas Peclet Number:	10.00
Max. Exhaust Gas Biot Number:	10.00
Max. Exhaust Gas Fourier Number:	10.00
Max. Exhaust Gas Stanton Number:	10.00
Max. Exhaust Gas Colburn Number:	10.00
Max. Exhaust Gas Chilton Colburn Number:	10.00
Max. Exhaust Gas Reynolds Number:	10.00
Max. Exhaust Gas Prandtl Number:	10.00
Max. Exhaust Gas Schmidt Number:	10.00
Max. Exhaust Gas Lewis Number:	10.00
Max. Exhaust Gas Zeldovich Number:	10.00
Max. Exhaust Gas Damköhler Number:	10.00
Max. Exhaust Gas Peclet Number:	10.00
Max. Exhaust Gas Biot Number:	10.00
Max. Exhaust Gas Fourier Number:	10.00
Max. Exhaust Gas Stanton Number:	10.00
Max. Exhaust Gas Colburn Number:	10.00
Max. Exhaust Gas Chilton Colburn Number:	10.00
Max. Exhaust Gas Reynolds Number:	10.00
Max. Exhaust Gas Prandtl Number:	10.00
Max. Exhaust Gas Schmidt Number:	10.00
Max. Exhaust Gas Lewis Number:	10.00
Max. Exhaust Gas Zeldovich Number:	10.00
Max. Exhaust Gas Damköhler Number:	10.00
Max. Exhaust Gas Peclet Number:	10.00
Max. Exhaust Gas Biot Number:	10.00
Max. Exhaust Gas Fourier Number:	10.00
Max. Exhaust Gas Stanton Number:	10.00
Max. Exhaust Gas Colburn Number:	10.00
Max. Exhaust Gas Chilton Colburn Number:	10.00
Max. Exhaust Gas Reynolds Number:	10.00
Max. Exhaust Gas Prandtl Number:	10.00
Max. Exhaust Gas Schmidt Number:	10.00
Max. Exhaust Gas Lewis Number:	10.00
Max. Exhaust Gas Zeldovich Number:	10.00
Max. Exhaust Gas Damköhler Number:	10.00
Max. Exhaust Gas Peclet Number:	10.00
Max. Exhaust Gas Biot Number:	10.00
Max. Exhaust Gas Fourier Number:	10.00
Max. Exhaust Gas Stanton Number:	10.00
Max. Exhaust Gas Colburn Number:	10.00
Max. Exhaust Gas Chilton Colburn Number:	10.00
Max. Exhaust Gas Reynolds Number:	10.00
Max. Exhaust Gas Prandtl Number:	10.00
Max. Exhaust Gas Schmidt Number:	10.00
Max. Exhaust Gas Lewis Number:	10.00
Max. Exhaust Gas Zeldovich Number:	10.00
Max. Exhaust Gas Damköhler Number:	10.00
Max. Exhaust Gas Peclet Number:	10.00
Max. Exhaust Gas Biot Number:	10.00
Max. Exhaust Gas Fourier Number:	10.00
Max. Exhaust Gas Stanton Number:	10.00
Max. Exhaust Gas Colburn Number:	10.00
Max. Exhaust Gas Chilton Colburn Number:	10.00
Max. Exhaust Gas Reynolds Number:	10.00
Max. Exhaust Gas Prandtl Number:	10.00
Max. Exhaust Gas Schmidt Number:	10.00
Max. Exhaust Gas Lewis Number:	10.00
Max. Exhaust Gas Zeldovich Number:	10.00
Max. Exhaust Gas Damköhler Number:	10.00
Max. Exhaust Gas Peclet Number:	10.00
Max. Exhaust Gas Biot Number:	10.00
Max. Exhaust Gas Fourier Number:	10.00
Max. Exhaust Gas Stanton Number:	10.00
Max. Exhaust Gas Colburn Number:	10.00
Max. Exhaust Gas Chilton Colburn Number:	10.00
Max. Exhaust Gas Reynolds Number:	10.00
Max. Exhaust Gas Prandtl Number:	10.00
Max. Exhaust Gas Schmidt Number:	10.00
Max. Exhaust Gas Lewis Number:	10.00
Max. Exhaust Gas Zeldovich Number:	10.00
Max. Exhaust Gas Damköhler Number:	10.00
Max. Exhaust Gas Peclet Number:	10.00
Max. Exhaust Gas Biot Number:	10.00
Max. Exhaust Gas Fourier Number:	10.00
Max. Exhaust Gas Stanton Number:	10.00
Max. Exhaust Gas Colburn Number:	10.00
Max. Exhaust Gas Chilton Colburn Number:	10.00
Max. Exhaust Gas Reynolds Number:	10.00
Max. Exhaust Gas Prandtl Number:	10.00
Max. Exhaust Gas Schmidt Number:	10.00
Max. Exhaust Gas Lewis Number:	10.00
Max. Exhaust Gas Zeldovich Number:	10.00
Max. Exhaust Gas Damköhler Number:	10.00
Max. Exhaust Gas Peclet Number:	10.00
Max. Exhaust Gas Biot Number:	10.00
Max. Exhaust Gas Fourier Number:	10.00

Babb Yachts Babb@BabbYachts.com www.BabbYachts.com	ANNA J Page 15 of 15
---	------------------------------------