



Type	Motor Yacht Flybridge	Classification	--
Top	--	Class Type	--
Model	SL96	Builder	SANLORENZO YACHTS
Manuf. Year	2016	Naval Architect	--
Refit Year	--	Interior Design	Sanlorenzo
LOA	95' 6" (29.1m)	Hull	GRP
Beam	22' 2" (6.75m)	Deck	--
Draft Min/Max	-- / 6' 3" (1.9m)	Engines	2x, MTU, MTU 16v2000m84, 2216 HP
GRT	--	Max Speed	28 Knots
Fuel	11500 L (3037.98 Gal)	Cruise Speed	25 Knots
Water	1900 L (501.93 Gal)	Range	--
Flag	Malta	Accommodations	4 strms

ASKING PRICE: (\$6,230,601 USD est.)
€5,400,000 EUR

SL96_3



SL96_4



SL96_5



SL96_6



SL96_8



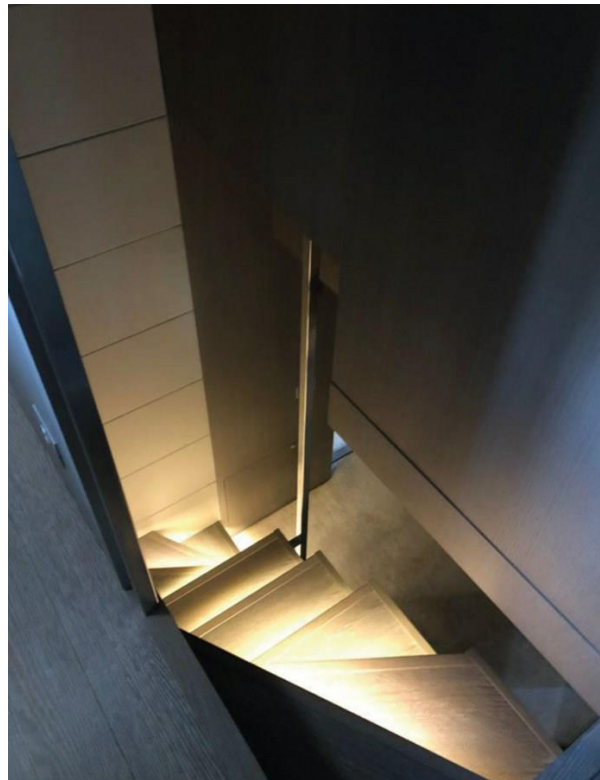
SL96_9



SL96_10



SL96_7



SL96_11



SL96_12



SL96_13



SL96_14



SL96_15

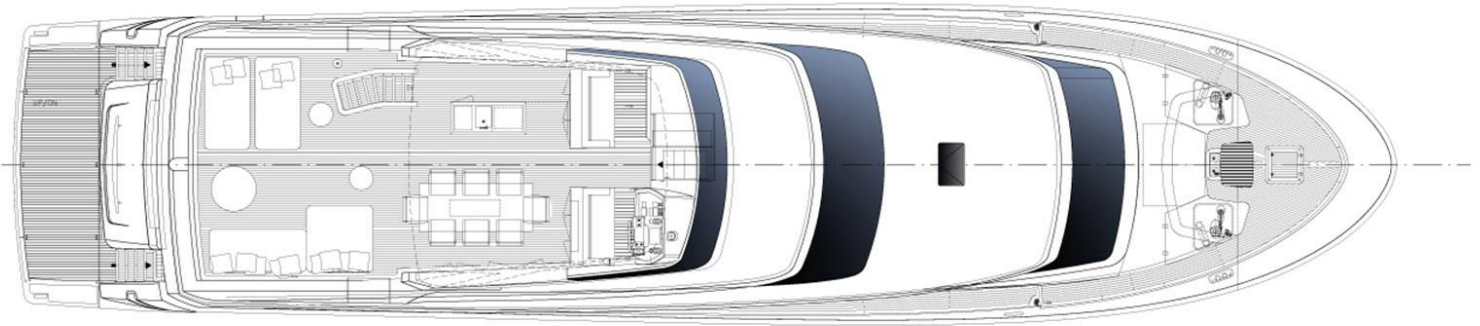


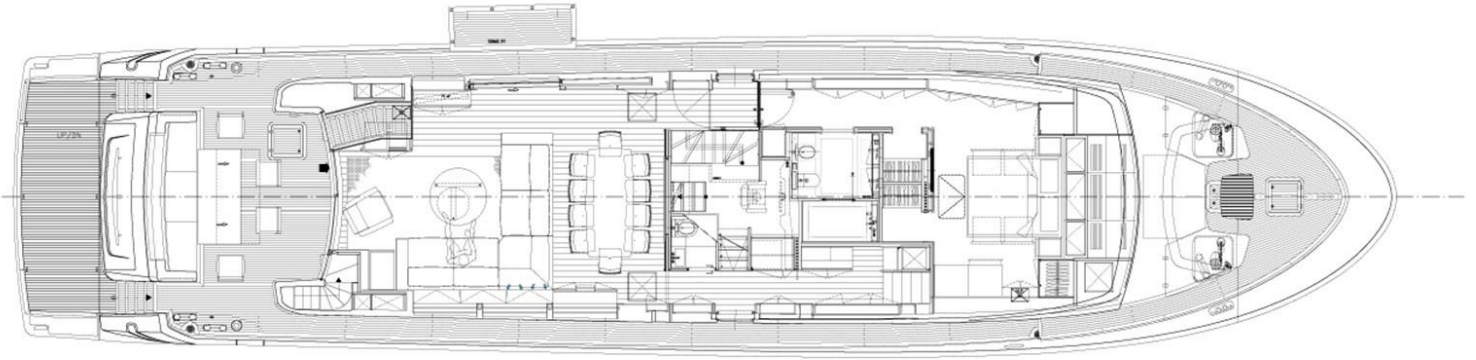
SL96_16

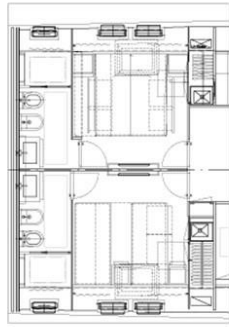
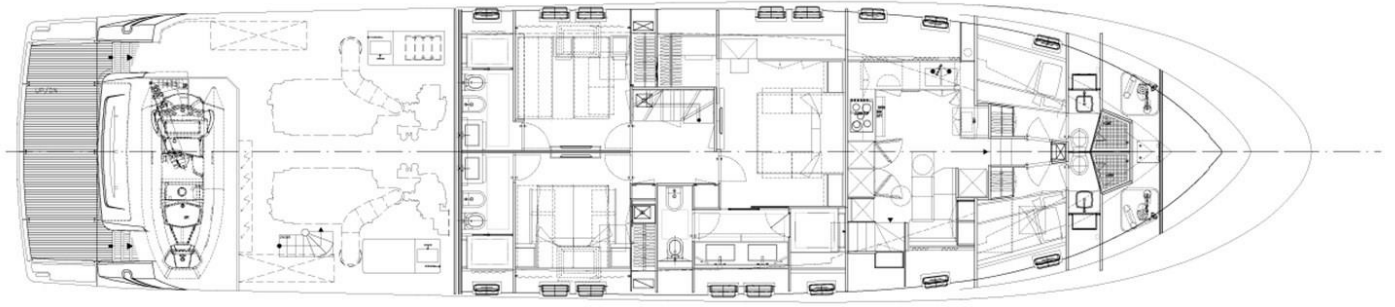












Transformable Vip's cabin

INTERIORS MAIN DECK

LIVING AREA:

1. MATERIALS:

Stained grey oak floor with anti-slip treatment; lacquered wood ceiling with a central stripe in Nuvola Canapa leather; Nuvola Canapa leather window frames; bow wall in Nuvola Canapa leather and satin metallic inserts; fumè mirror on starboard side; storage cabinets in grey oak on port side; grey satin oak bulkhead storage with metallic inserts; Nuvola Canapa leather Vanity desk.

2. FURNITURE:

"L" shaped light grey sofa; red leather armchair; smoking table by Minotti; grey marble table and no. 10 Nuvola Canapa leather chairs; manual drapes.

3. DAILY TOILET:

Calacatta marble floor and sink top; door, sink furniture and walls in oak; gloss lacquered ceilings

4. GALLEY:

Allura vinyl floor, lacquered wood ceilings, natural satin oak bulkheads. Black gloss granite worktop in galley; table with oak expandable top and inox base; no. 2 stools; oak sofa with Nuvola Leather cushions; extra insulations between galley and master cabin.

MASTER CABIN:

1. MATERIALS:

Moquette floor, lacquered wood ceilings with central zone in Nuvola Canapa leather; stained grey satin oak bulkheads with mirror TV cover; Nuvola Canapa leather window frames.

2. FURNITURE:

Stained grey oak bow cabinet, fumè mirror with metal frame door; grey satin oak ship's side furnitures with satin metallic inserts, Nuvola Canapa leather vanity desk, bed and nightstand; Nuvola Canapa leather top and black-nichel base Minotti bench.

3. BATHROOM:

Gloss marble Calacatta floor, shower and sink top; gloss lacquered wood ceilings and bulkheads; grey oak sink cabinet.

INTERIORS LOWER DECK

VIP CABIN:

1. MATERIALS:

Moquette floor; lacquered wooden ceilings with over the bed zone in Nuvola Canapa leather; grey oak bulkheads, Gray satin oak TV bulkhead.

2. FURNITURE:

Nuvola Canapa leather pullman bed, grey oak bulkhead cabinet, Nuvola Canapa bench by Minotti; safe.

3. BATHROOM:

Gloss Calacatta marble floor; gloss lacquered wood ceilings, shower and bulkheads; satin grey oak sink cabinet.

GUEST CABIN:

1. MATERIALS:

Moquette floor; lacquered wooden ceilings with over the bed zone in Nuvola Canapa leather; grey oak bulkheads, Gray satin oak TV bulkhead.

2. FURNITURE:

No. 2 Nuvola Canapa leather single sliding beds. Additional pullman bed in port side cabin.

CREW AREA:

1. MATERIALS:

Moquette floor, gloss lacquered ceilings, natural oak bulkheads and furniture. Gloss lacquered for ceilings, floor and shower in bathroom; painted teak shower floor.

EXTERIORS

EXTERIORS:

1. STERN COCKPIT:

Norwegian curtains; micro-perforated fabric for summer cover; electric up/down table.

2. BOW AREA:

Bench with cushions.

3. UPPER BRIDGE:

Lateral balcony in salon with sliding door.

4. FLYBRIDGE:

GRP hardtop; teak floor, exterior furniture by Paola Lenti; bar cabinet by Boffi; inox column shower, 8-people table; no. 3 sofas, sun awning area with cushions.

NAVIGATION

1. WHEELHOUSE:

No. 2 multi-functions monitor (plotter, radar, GPS); touch screen for the utilities on board; speedometer; depth sounder, anemometer, rudder angle senso, autopilot, VHF, Raymarine gold upgrade package.

2. FLYBRIDGE:

No. 1 multi-functions monitor (plotter, radar, GPS); touch screen for the utilities on board; speedometer; depth sounder, anemometer, rudder angle senso, autopilot, VHF.

SATELLITE ANTENNAS

HOUSEHOLD APPLIANCES

1. GALLEY:

90 cm cooktop; extractor hood; 90 cm oven; microwave oven, fridge, freezer by Gaggenau; dishwasher by Zanussi; goods lift.

2. MAIN SALON:

Fridge by Frigonautica; icemaker by Vitrifrigo; wine cooler by Gaggenau. Flybridge: grill by Siemens; icemaker by Vitrifrigo; fridge by Frigonautica.

3. CREW AREA:

Washing machine and dryer by Miele.

4. OTHERS:

4G modem.

AUDIO VIDEO

1. MAIN DECK:

- SALON: Samsung LED TV 48"; no. 1 multi area amplifier with AirPlay; home theatre kit With subwoofer, no. 2 ceiling integrated speakers with connection to cockpit, flybridge and bow area; no. 1 dvd Bluray 3D reader; remote.
- DINING AREA: no. 2 ceiling integrated speakers.
- MASTER CABIN: Samsung LED TV 48"; home theatre kit with subwoofer, no. 2 ceiling integrated speakers; no. 1 dvd Bluray 3D reader; remote.

2. LOWE DECK:

- STARBOARD AND PORT SIDE GUEST CABINS: no 1 Hi-Fi system with no. 2 ceiling integrated speakers and integrated DVD reader; Samsung LED TV 32"; remote control.
- VIP CABIN: Samsung LED TV 40"; Hi-Fi system with no. 2 ceiling integrated speakers and integrated DVD reader; remote control.

3. EXTERNAL AREAS:

- FLYBRIDGE: Samsung LED TV 40" in pilot cabinet; no. 2 ceiling integrated speakers connected to the salon.
- COCKPIT: no. 2 ceiling integrated speakers connected to the salon.

