

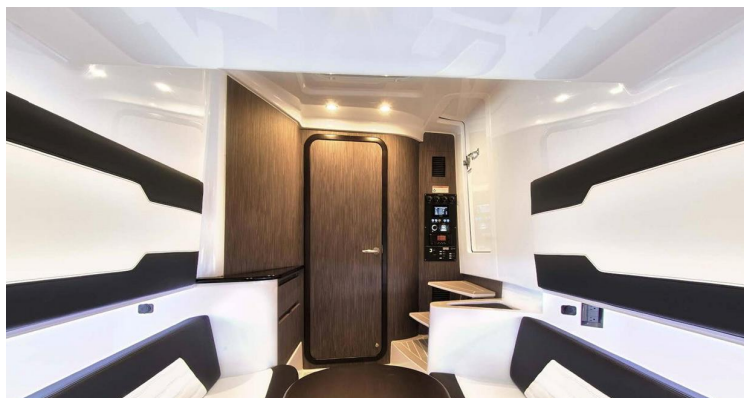


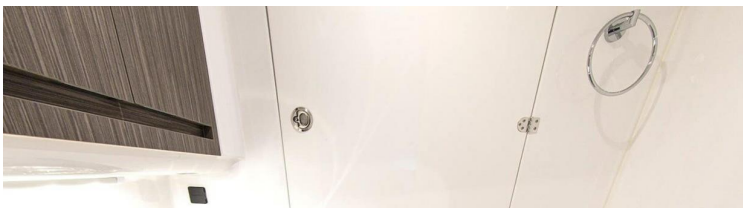
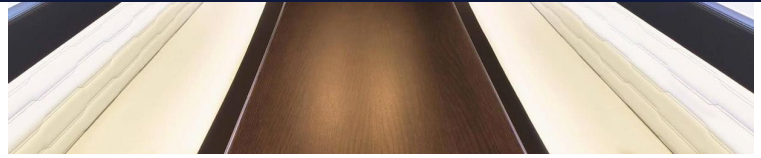
OVERVIEW

TYPE	Motor	DESIGNER	N/A
LENGTH	42' (12.8m)	SPEED	55 Knots
BEAM	11' 11" (3.63m)	ENGINES	4x, Mercury, 450R Mercury Verados, 450 HP
DRAFT	2' 10" (0.86m)	RANGE	
BUILDER	CIGARETTE	FLAG	N/A
HULL MATERIAL	Fiberglass	TAXES PAID	N/A

ASKING PRICE \$1,625,500 USD

TJB SUPER YACHTS LTD SVC ACCOUNT M: T: E: INFO120120220343@TJB-SUPER-YACHTS-LTD.COM







## DETAILED SPECIFICATIONS



### MAIN CHARACTERISTICS

TYPE	MOTOR
COUNTRY OF REGISTRY	N/A
PORT OF REGISTRY BUILT	2022
REFIT	N/A
BUILDER	CIGARETTE
NAVAL ARCHITECH	N/A
EXTERIOR DESIGNER	N/A
INTERIOR DESIGNER	N/A
LWL	N/A
BEAM	11' 11" (3.63M)
MAX DRAFT	2' 10" (0.86M)
CONSTRUCTION	N/A
HELIDECKS/HANGER	N/A

### Engine Options

- 4 x 450R Mercury Verados- \$ 1,532,548.16
- 5 x 450R Mercury Verados- \$ 1,731,294.24
- If White Engine Option, \$3,550.00 per Engine

## Deck

### Bow, Gunwale & Hullsides

- Wide profile rub rail with stainless chafe profile
- Stainless steel continuous grab rail runs the length of the boat
- Large, inboard swinging, single-piece, dive door on starboard side with hidden fold-out diving ladder and handrail
- 10 stainless steel cleats

### Bow Area

- U-shaped seating
- Dual, alt facing, benches sitting two each
- 4 stainless steel cup holders around C-shaped solas • Weather tight storage boxes underneath each seat

### Forward Lounge Area

- Wide lounge seat at front of center console comfortably seats three and features a centered foldable armrest and stainless-steel cup holders
- "Zero gravity" ergonomic forming of the lounge increases comfort both underway and at port

### Hardtop

- Unique, carbon-fiber composite, four-pillar, hardtop design provides dramatic aesthetics while also lowering the center of gravity of the vessel
- Wide, double curvature, frameless windscreen with clear laminated safety glass
- Mercury VesselView 903 and switching located above helm on the hard top
- Rigid Industries high output floodlights are integrated into the top for powerful forward lighting
- Alt spoiler with signature Cigarette rise
- Boarding handrails on back of B pillar and underside of top provide easy access from high docks

## Cabin Interior

### General

- Port-side access to cabin
- Redesigned luxury interior
- CNC cut cabinets
- CNC cut Corian countertops
- Floor to ceiling veneered wall between cabin & head
- U-shaped seating
- Dual, alt facing, benches sitting two each

### Enclosed Head

- Electric head with macerator
- Stainless steel freshwater sink
- Polished towel and toilet paper holders

### Lighting

- Distributed, warm white, high CRI, ceiling spotlights are provided in the cabin
- Ambient mood lighting surrounding U-shaped seating

### Sleeping Arrangements

- Table electrically lowers to bed height, creating a two passenger sleeping berth

## Details

### Upholstery & Flooring

- Upholstery is in premium quality outdoor fabrics with custom quilting
- Diamond pattern non-skid

### Exterior Lighting

- Digitally controlled RGB ambient lighting
- High power LED down-lights are installed in the hardtop for general and task lighting
- Red captains lighting for night tasks
- 3x underwater lights

## Technical

Audio by JL Audio Marine

- 6x 8.8" JL Audio M Series coaxial speakers, plus 2 x 12" and 1x10" JL Audio M subwoofers on deck
- 2,400 watts of Class D amplification
- Fusion Apollo network head unit
- 2x 7.7" JL Audio M Series cabin speakers powered by Apollo head unit
- CZone monitoring allows the operator to monitor water and diesel fuel (if optioned) directly and fuel level via the NMEA2000 network
- Automatic sequential engine starting with a single button push on the Garmin display
- Individual engine trim control through Mercury integration
- Manual bypass toggle switches for critical systems
- All digital switching output modules feature a two position fuse holder that allows bypass of the output directly by moving the fuse to the alternate position for get-home capability
- Power source selection conveniently located in the main distribution panel
- Individual branch circuit breakers and monitoring boards are strategically located out of sight but within easy reach
- Circuits can be turned on or off from one or more of the Garmin MFD displays around the boat Electrical System Design
- Split DC electrical system designed to protect the start battery pack and provide multiple power leads for critical systems such as navigation
- Standalone engine starting and power steering circuits
- Automatic battery switches with manual paralleling
- House battery system designed to minimize weight and maximize powering of house loads
- Bilge pumps, drain sumps and the wireless remote to CZone are all led directly from the housebattery bank with reset only circuit breakers so that these critical circuits can't be accidentally turned off

## Digital Switching & Automation

- State-of-the-art CZone digital control and monitoring system
- Control of almost every vessel function through several touch screen displays on the boat
- Lighting, including dimming, can be adjusted across the boat with a single keystroke from any MFD throughout the vessel
- CZone monitoring allows the operator to monitor water and diesel fuel (if optioned) directly and fuel level via the NMEA2000 network
- Automatic sequential engine starting with a single button push on the Garmin display
- Individual engine trim control through Mercury integration
- Manual bypass toggle switches for critical systems
- All digital switching output modules feature a two position fuse holder that allows bypass of the output directly by moving the fuse to the alternate position for get-home capability
- Power source selection conveniently located in the main distribution panel
- Individual branch circuit breakers and monitoring boards are strategically located out of sight but within easy reach
- Circuits can be turned on or off from one or more of the Garmin MFD displays around the boat Electrical System Design
- Split DC electrical system designed to protect the start battery pack and provide multiple power leads for

critical systems such as navigation

- Standalone engine starting and power steering circuits
- Automatic battery switches with manual paralleling
- House battery system designed to minimize weight and maximize powering of house loads
- Bilge pumps, drain sumps and the wireless remote to CZone are all led directly from the house battery bank with reset only circuit breakers so that these critical circuits can't be accidentally turned off
- House bank charging is accomplished by dedicated ProMariner 1260 battery charger
- 30-Amp shore power Laminate Quality
- Hull and deck are vacuum bagged and use a highly optimized laminate schedule with vinylester resin
- Hybrid PVC-Balsa cored hull
- Over 7" thick high density transom
- Carbon-fiber hard top to reduce the center of gravity for better handling
- Two sided, completely finished, hatches throughout Mercury Power & Control
- Quad & Quintuple Mercury Racing or Mercury Verado outboards
- Four/Five engines can be controlled by just two levers
- New VesselView User interface Mooring & Docking
- Stainless steel delta anchor
- Bow thruster

## Paint

Painted hull side included

## Included Options

- Quick Release Bumper Holders
- Cigarette Cool Touch Fabric
- Rain Shower
- Windlass System
- Telescoping Aft Sun Shade
- A/C & Diesel Generator
- Cigarette Pure Plus
- Garmin Radar Dome GMR-24
- HD
- Front and Rear Facing Cameras
- Garmin Convenience Package

## Disc

The Company offers the details of this vessel in good faith but cannot guarantee or warrant the accuracy of this information nor warrant the condition of the vessel. A buyer should instruct his agents, or his surveyors, to investigate such details as the buyer desires validated. This vessel is offered subject to prior sale, price change, or withdrawal without notice.

## Disclaimer

The company offers the details of this vessel in good faith but cannot guarantee or warrant the accuracy of this information nor warrant the condition of the vessel. A buyer should instruct their agents, or their surveyors, to investigate such details as the buyer desires validated. This vessel is offered subject to prior sale, price change, withdrawal without notice, and tax when applicable.



# 2023 42 Cigarette Auroris



# 2023 42 Cigarette Auroris

+44 (0) 207 183 4393 • [ENQUIRIES@TJBSUPERYACHTS.COM](mailto:ENQUIRIES@TJBSUPERYACHTS.COM)

24.11 CODA STUDIOS, 189 MUNSTER ROAD, FULHAM, LONDON, SW6 6AW, UK