



world yacht group

Experts in luxury yachts

■



<b>LOA:</b>	87' 10" (26.75m)	<b>Delivery/Model</b>	2009
<b>Beam:</b>	22' 2" (6.75m)	<b>Year:</b>	
<b>Tonnage:</b>	0.00	<b>Model:</b>	SL88
<b>Speed:</b>	24 Knots 30 Knots	<b>Builder:</b>	SANLORENZO
<b>Flag:</b>	UK	<b>Type:</b>	Motor Yacht
<b>Location:</b>	Marmaris, Mugla Turkey	<b>Staterooms:</b>	4
<b>VAT Paid:</b>	VAT Paid	<b>Fuel Cap:</b>	10400 L (2747.39 Gal)
		<b>Water Cap:</b>	2000 L (528.34 Gal)
		<b>Engines:</b>	2x, MTU, 16V2000M92, 2216 HP
		<b>Price:</b>	(\$2,900,808 USD est.) €2,570,000 EUR

Generated On 5/9/2025 10:23 AM by WORLD YACHT GROUP SVC Account

**WORLD YACHT GROUP USA**

**WORLD YACHT GROUP SVC**

**Account**

**info160920210306@world-yacht-  
group.com**

**worldyachtgroup.com**

Page 1 of 14

### Additional Specifications For -:

<b>LOA:</b>	87' 10" (26.75m)	<b>Delivery/Model</b>	2009
<b>Beam:</b>	22' 2" (6.75m)	<b>Year:</b>	
<b>Min Draft:</b>	6' 7" (2m)	<b>Year Built:</b>	2009
<b>Hull Material:</b>	GRP	<b>Refit Year:</b>	2022
<b>Superstructure:</b>	GRP	<b>Builder:</b>	SANLORENZO
<b>Hull Designer:</b>	Sanlorenzo	<b>Model:</b>	SL88
<b>Range At Cruise</b>		<b>Type:</b>	Motor Yacht
<b>Speed:</b>		<b>Engines:</b>	2216 HP,Twin, 2009, Inboard, Diesel, MTU, 16V2000M92, 1602hrs / 1609hrs
<b>Range At Max</b>		<b>Staterooms:</b>	4
<b>Speed:</b>	Cruising 24 Knots	<b>Sleeps:</b>	8
	Max 30 Knots	<b>Heads:</b>	5
<b>Int Designer:</b>	Sanlorenzo	<b>Crew Quarters:</b>	2
<b>Ext Designer:</b>	Sanlorenzo	<b>Crew Berths:</b>	3
<b>Fuel Capacity:</b>	10400 L (2747.39 Gal)	<b>Captain Cabin:</b>	No
<b>Water Capacity:</b>	2000 L (528.34 Gal)	<b>Classifications:</b>	
<b>Flag:</b>	UK	<b>MCA:</b>	ISM:
<b>Location:</b>	Marmaris, Mugla Turkey		
<b>Price:</b>	(\$2,900,808 USD est.) €2,570,000 EUR		
<b>Tax Status:</b>	VAT Paid		

**LAYOUT:**  
**LAYOUT:**

Interior in satin wenghè.

**Main deck**

Salon with L-shaped sofa, coffee table and armchair; dining area with table and chairs; hallway with exit door on the side walkway and staircase down to the cabins; courtesy bathroom; staircase to the bridge; side hallway with exit door on the walkway; galley with crew dinette; staircase down to the crew cabins.

**Lower deck**

Owner's cabin amidships with dressing room and bathroom with Jacuzzi; guest cabin with twin beds and bathroom; guest cabin with French bed at side with bathroom; vip cabin at bow with bathroom.

**Crew area**

Two crew cabins at bow one single and one with bunk beds each with bathroom, shared shower.

**AUDIO VISUAL:**  
**AUDIO VIDEO:**

Salon TV with DVD and Bose system; owner's cabin: TV with DVD and Bose system; TV in vip and guests cabins with DVD, TV 20" in crew mess, TV SAT antenna

**APPLIANCES:**

**APPLIANCES:**

**Galley**

Electric cooker, oven, microwave, fridge/freezer, dishwasher, winecooler, washing machine, dryer, coffee machine, garbage disposal, additional fridge in the galley.

**Salon**

Fridge bar

**Flying bridge**

Stove top, bar fridge and ice-maker.

## **ENGINE ROOM:**

### **ENGINE ROOM EQUIPMENT:**

Air conditioning (180.000 BTU), watermaker 180 l/h, black water treatment plant Mini Hamman, Alfa Laval, cable reel Glendenning, fresh water filter

## **DECK EQUIPMENT:**

### **DECK EQUIPMENT:**

Two winches with mooring bells at bow, two mooring at stern, hydraulic foldaway gangway, hydraulic swim ladder, hardtop, crane for tender on flying bridge.

## **NAVIGATION:**

### **NAVIGATION ELECTRONICS:**

All electronics are by Raymarine.

## **Wheelhouse**

72 nm radar, multifunction monitor G150 (radar-plotter GPS-ECO), ST290 autopilot, ST290 tridata, ST290 rudder angle, Furuno Navtex NX700A, RAY240E VHF.

## **Flybridge**

Multifunction monitor E120 (radar-plotter GPS-ECO), ST290 autopilot, ST290 tridata, ST290 rudder angle, ST290 wind station, RAY240E VHF.

## **ALARMS & SECURITY:**

### **ALARMS AND SECURITY:**

Internal telephone system, maneuver intercom 5 stations, CCTV system with monitors in the wheelhouse and in the dinette crew, smoke detection system in each room.

## **MOORING, MANEUVERING, STABILISATION AND TRIM SYSTEMS:**

### **MOORING, MANEUVERING, STABILISATION AND TRIM SYSTEMS:**

Hydraulic bow thruster, hydraulic stern thruster, zero speed and dynamic stabilizing fins (working both at anchor and while sailing), third portable control station, no. 4 underwater lights

**CERTIFICATIONS:**

**CERTIFICATIONS:**

Rina Class Certification

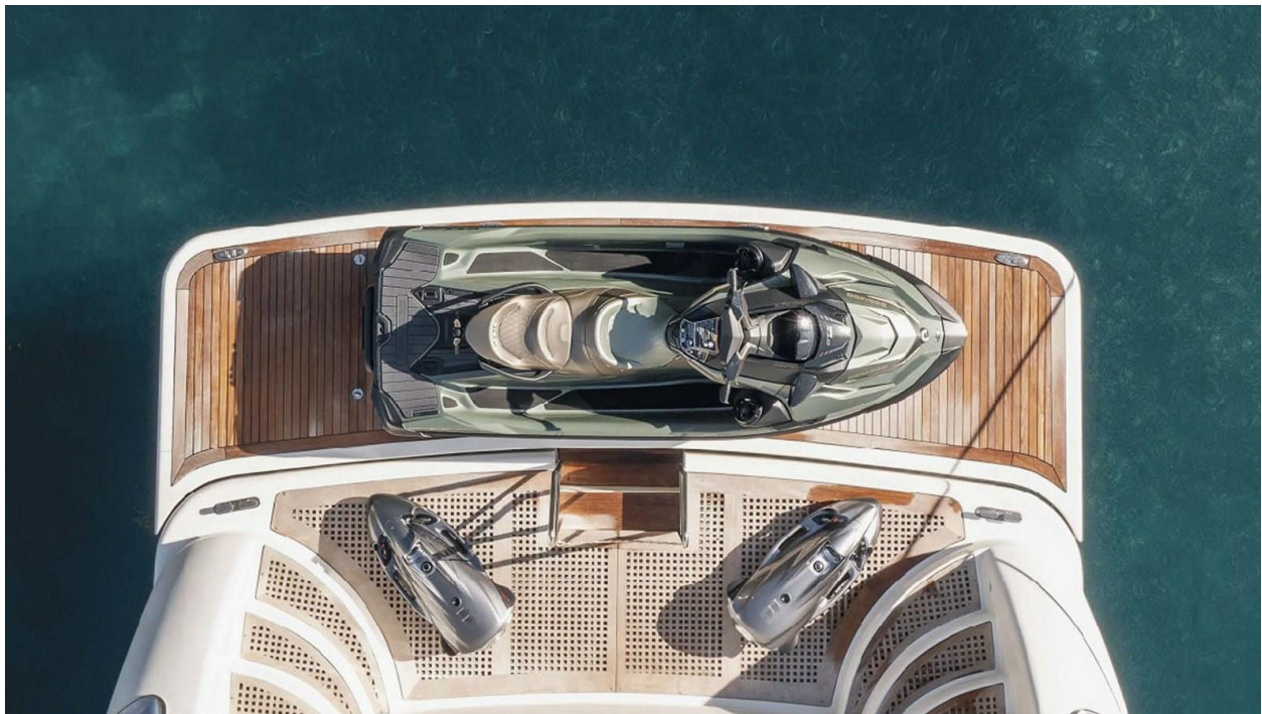
**Disclaimer:**

This yacht is offered subject to still being available. The particulars are believed to be correct but are not guaranteed and may not be used for contractual purposes. Specification provided for information only. Advertising of these vessel(s) in printed publications, on the internet or in any other medium is not permitted without prior written permission from Viudes Yachts.

**SanlorenzoSL8800009**



**SanlorenzoSL8800010**



Generated On 5/9/2025 10:23 AM by WORLD YACHT GROUP SVC Account

**WORLD YACHT GROUP USA**

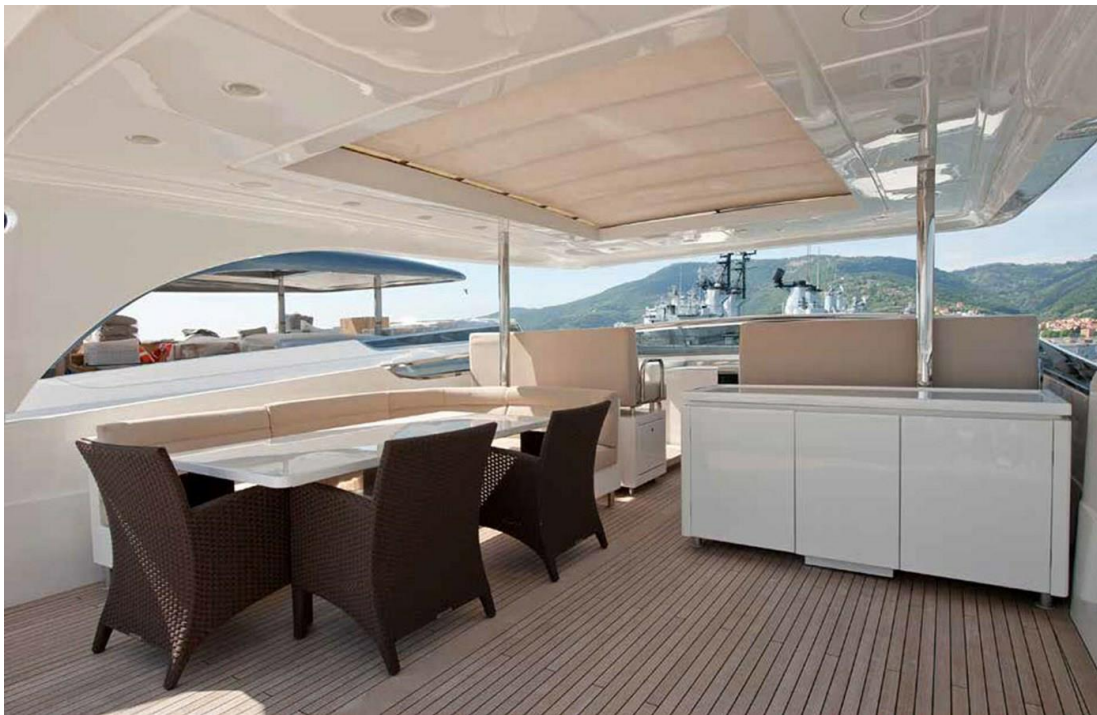
**WORLD YACHT GROUP SVC**

**Account**

**info160920210306@world-yacht-**  
**group.com**

**worldyachtgroup.com**

SanlorenzoSL8800006



Generated On 5/9/2025 10:23 AM by WORLD YACHT GROUP SVC Account

**WORLD YACHT GROUP USA**

**WORLD YACHT GROUP SVC**

**Account**

**info160920210306@world-yacht-  
group.com**

**worldyachtgroup.com**

Page 7 of 14

SanlorenzoSL8800007



Generated On 5/9/2025 10:23 AM by WORLD YACHT GROUP SVC Account

**WORLD YACHT GROUP USA**

**WORLD YACHT GROUP SVC**

**Account**

**info160920210306@world-yacht-  
group.com**

**worldyachtgroup.com**

Page 8 of 14

SL88-541-3



SanlorenzoSL8800008



Generated On 5/9/2025 10:23 AM by WORLD YACHT GROUP SVC Account

**WORLD YACHT GROUP USA**

**WORLD YACHT GROUP SVC**

**Account**

**info160920210306@world-yacht-  
group.com**

**worldyachtgroup.com**

Page 9 of 14

SL88-541-4



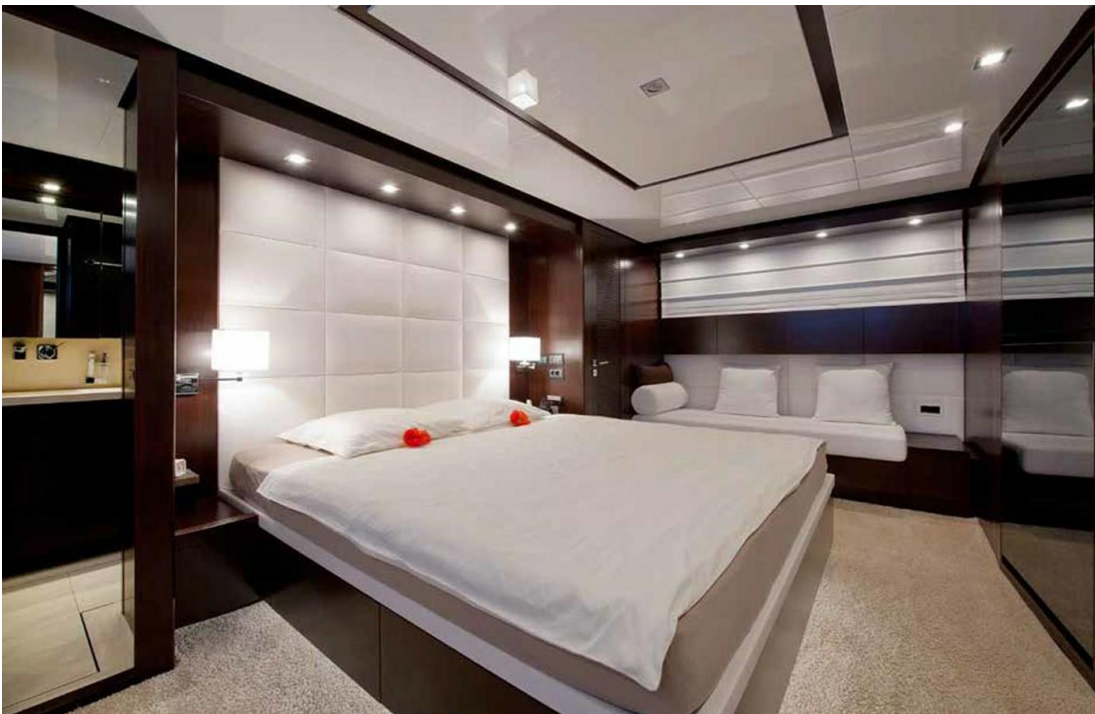
SL88-541-5



**SanlorenzoSL8800005**



**SL88-541-8**





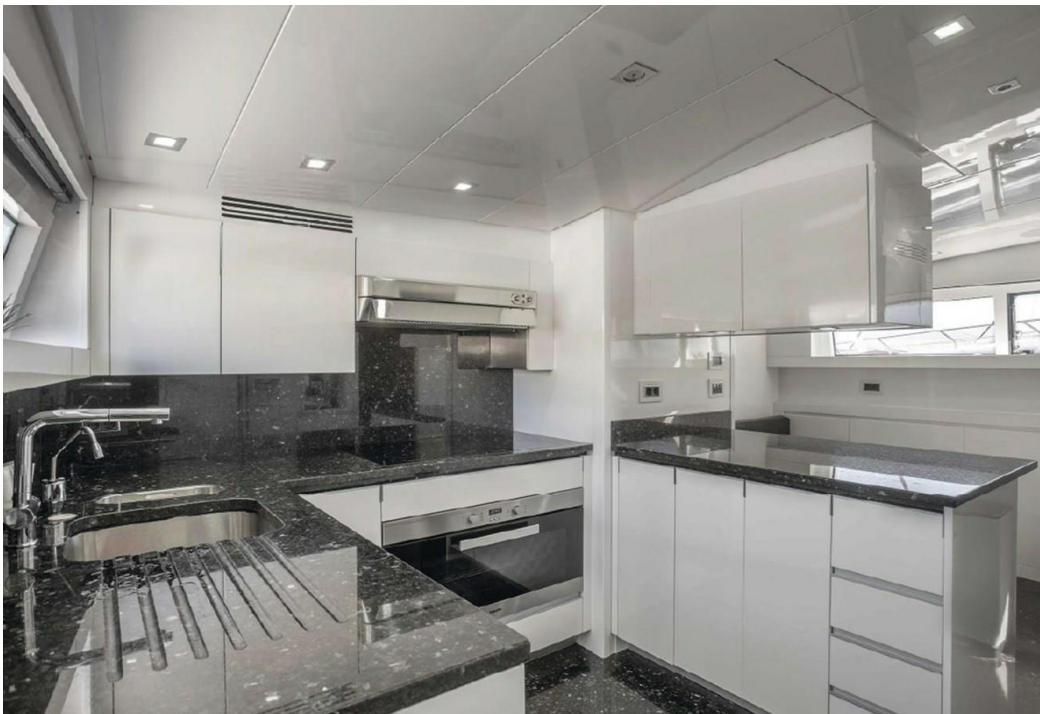
SL88-541-10



SL88-541-11



SanlorenzoSL8800002



Generated On 5/9/2025 10:23 AM by WORLD YACHT GROUP SVC Account

**WORLD YACHT GROUP USA**

**WORLD YACHT GROUP SVC**

**Account**

**info160920210306@world-yacht-  
group.com  
worldyachtgroup.com**

Page 13 of 14

**SanlorenzoSL8800011**



**SanlorenzoSL8800004**

