



Type	Motor Yacht	Classification	--
Top	--	Class Type	--
Model	F62	Builder	PRINCESS YACHTS
Manuf. Year	2019	Naval Architect	--
Refit Year	--	Interior Design	--
LOA	62' (18.9m)	Hull	Fiberglass
Beam	--	Deck	--
Draft Min/Max	-- / --	Engines	2x, Volvo, Volvo D13C2-900, 900 HP
GRT	--	Max Speed	--
Fuel	--	Cruise Speed	--
Water	--	Range	--
Flag	--	Accommodations	--

ASKING PRICE: **\$1,950,000 USD**

2_2019 62ft Princess F62



3_2019 62ft Princess F62



4_2019 62ft Princess F62



5_2019 62ft Princess F62



6_2019 62ft Princess F62



7_2019 62ft Princess F62



8_2019 62ft Princess F62



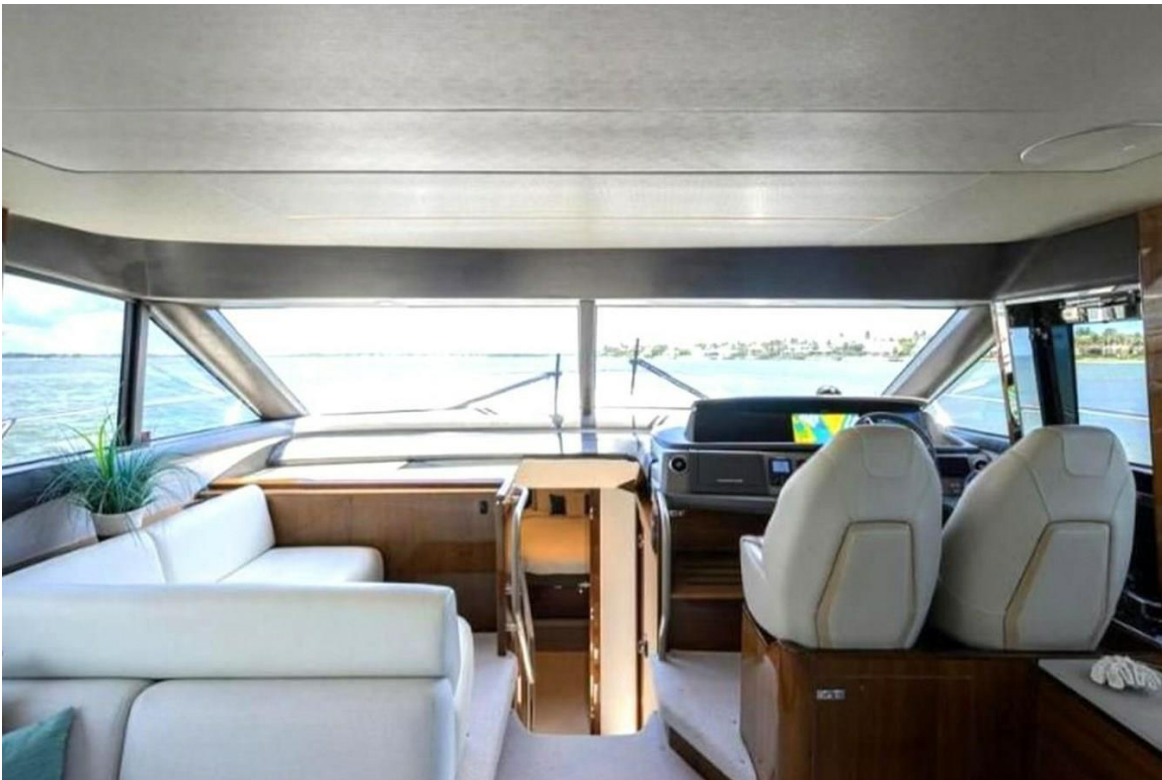
9_2019 62ft Princess F62



10_2019 62ft Princess F62



11_2019 62ft Princess F62



12_2019 62ft Princess F62



13_2019 62ft Princess F62



14_2019 62ft Princess F62



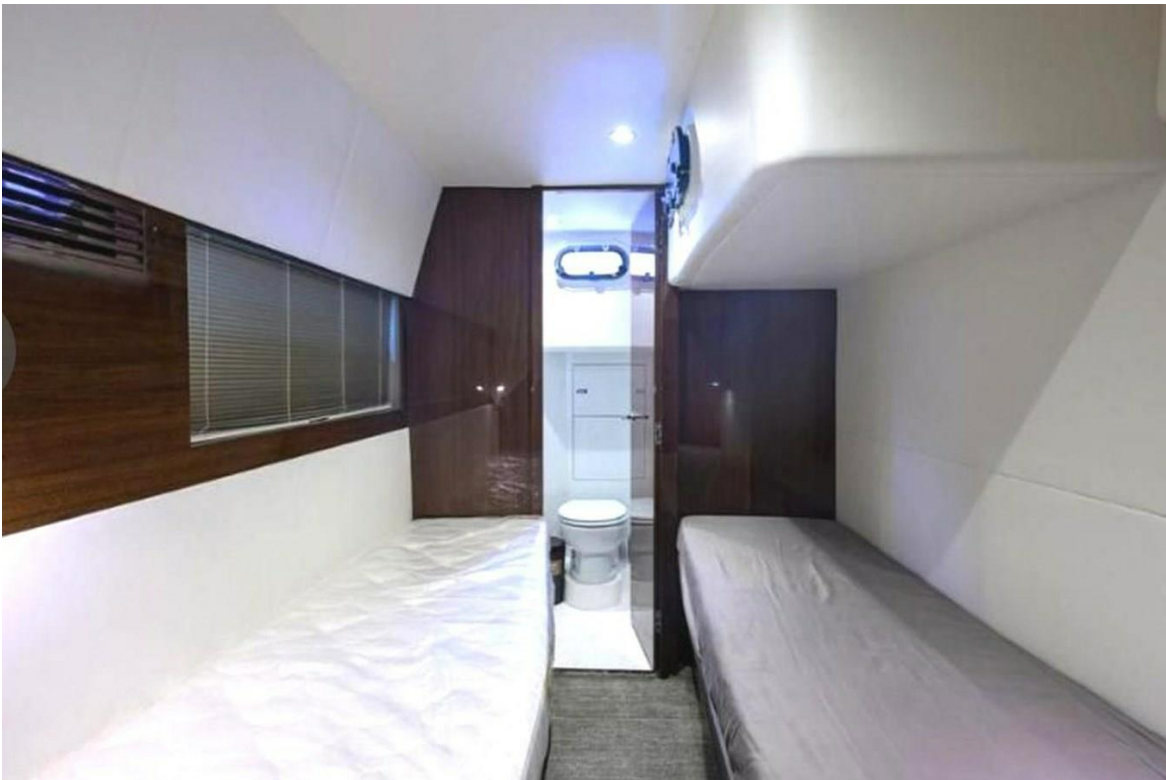
15_2019 62ft Princess F62



16_2019 62ft Princess F62



17_2019 62ft Princess F62



18_2019 62ft Princess F62



19_2019 62ft Princess F62



20_2019 62ft Princess F62



Manufacturer Provided Description

The all-new F62 encapsulates our uncompromising design ethos and benefits from the latest infusion technology which enables the inclusion of features normally exclusive to much larger craft. Her flybridge inspires relaxation with a large dining area a sunpad aft and a unique circular forward seating area that can be converted into an additional sunpad. Boasting a walkthrough foredeck entertaining space and a hydraulic bathing platform as standard she's a pioneering yacht that continues to set the standard.

Her cavernous main deck saloon connects to the world outside through full length side windows, while her sociable galley is positioned aft and opens to the cockpit. The helm position is located to starboard with additional forward facing guest seating opposite. Below deck six guests enjoy three beautifully appointed en suite cabins all bathed in natural light from elegant hull glazing, with the option of a further twin cabin aft for occasional guests or crew.

Accommodations

ACCOMMODATION

- All cabins and bathrooms feature opening portholes
- All cabins feature 220/240v power points
- All mattresses pocket sprung (excluding crew)
- All bathrooms feature full shower stalls, electric freshwater toilets,
- Extractor fan and 240v shaver points

INTERIOR FINISH

- Furniture in Rovere Oak with satin or high gloss finish. American
- Walnut or Alba Oak available as an option
- Avonite worktops and tiled floors in all guest bathrooms
- Avonite worktop and timber-laid floor in galley
- Choice of high quality carpet and upholstery fabric from extensive range
- Curtains, blinds or sunscreens to all windows and portholes
- Optional crew cabin fitted with non slip safety flooring

SPECIFICATION OVERVIEW

OWNER'S STATEROOM

- Large double bed with drawers below
- Twin wardrobes with shelves
- Shelves, storage lockers and drawers
- Dressing table
- Occasional table with fore and aft seating

40" LED TV, DVD, radio/MP3

- Overhead and individual berth lights
- En suite bathroom

FORWARD GUEST CABIN

- Large double bed with drawers below
- Wardrobe with shelves
- Dressing table
- Storage lockers and drawers
- Deck hatch
- Overhead and individual berth lights
- En suite bathroom with day access

STARBOARD GUEST CABIN

- Two single beds (with the option of sliding berths)
- Wardrobe with shelves
- Storage lockers and drawers
- Overhead and individual berth lights
- En suite bathroom

OPTIONAL AFT CABIN

- Two single berths with storage below
- Wardrobe with shelf
- Overhead and individual berth lights
- Bathroom with toilet, washbasin and shower

Electrical Systems

24 Volt:

- 4 x heavy duty batteries for engine starting
- 4 x heavy duty auxiliary batteries
- 60 amp battery charger charges both banks of batteries via an automatic switch charging system
- Remote battery master switches with control switch at main panel
- LED lighting throughout
- 220/240 Volt:
- 9.5Kw diesel generator in own sound shield with water cooled specially silenced exhaust
- 50 amp shore support inlet

- Earth leakage safety trip, polarity check system, circuit breakers on all circuits
- Power points in all areas

Power and Drive Systems

- 4-bladed propellers in nickel aluminium bronze
- Bow thruster (130kgf/287lbf)
- Power-assisted electro-hydraulic steering system with hydraulic back-up
- Electronic engine and gear shift controls
- Dripless shaft seals
- Engine room extractor fan with electronic time delay

Fuel System

- Twin fuel tanks (in NS8 marine grade alloy) with interconnection system giving 748 gal/898 US gal/3,400l capacity
- Fuel fillers on port and starboard side decks
- High capacity duplex fuel filters/water traps with audible and visual fuel contamination warning system
- Remote fuel cocks in cockpit locker
- Fuel gauges at lower helm console

Water System

- 174 gal/209 US gal/793l plus 16 gal/19 US gal/73l hot water calorifier, heated by engines and 240v immersion heater
- Water level gauge
- Deck filler
- Electric freshwater WC system with 60 gal/72 US gal/272l holding tank

Fire Extinguishers

Automatic/manual override fire extinguishers in engine room

Hand-operated fire extinguishers in all cabins, galley and lower helm (5)

Bilge Pumps

Automatic electric bilge pumps (6)

High capacity manual bilge pump with valve system and suction points in same areas

Other Items Supplied as Standard

- Quilted bedspreads supplied to all cabins(except optional crew)
- Ensign staff

- Fenders (6) and warps (4)
- First aid kit
- Set of manuals

Engine Notes

2 x 900mhp Speed range: 30–31 knots

Disclaimer

The Company offers the details of this vessel in good faith but cannot guarantee or warrant the accuracy of this information nor warrant the condition of the vessel. A buyer should instruct his agents, or his surveyors, to investigate such details as the buyer desires validated. This vessel is offered subject to prior sale, price change, or withdrawal without notice.