



world yacht group

Experts in luxury yachts

KANDO 90



LOA:	92' 6" (28.19m)	Delivery/Model	2026
Beam:	23' 7" (7.19m)	Year:	
Max Draft:	7' 7" (2.31m)	Model:	KANDO 90 Explorer Superyacht
Tonnage:	250.00	Builder:	AVA YACHTS
Speed:	10 Knots 14 Knots	Type:	Motor Yacht Expedition or Explorer
Location:	Antalya, Antalya Turkey	Staterooms:	6
VAT Paid:	VAT Unpaid	Fuel Cap:	8717.68 Gal
		Water Cap:	1320.86 Gal
		Engines:	2x, Volvo Penta, D11, 510 HP
		Price:	(\$13,681,256 USD est.) €11,650,000 EUR

Generated On 12/13/2025 7:01 AM by WORLD YACHT GROUP SVC Account

WORLD YACHT GROUP USA

WORLD YACHT GROUP SVC

KANDO 90

Account

**info160920210306@world-yacht-
group.com**

worldyachtgroup.com

Page 1 of 21

Additional Specifications For KANDO 90:

LOA:	92' 6" (28.19m)	Delivery/Model	2026
Beam:	23' 7" (7.19m)	Year:	
Max Draft:	7' 7" (2.31m)	Year Built:	2026
Hull Material:	Steel	Builder:	AVA YACHTS
Superstructure:	Aluminum	Model:	KANDO 90 Explorer Superyacht
Hull Designer:	Ava Yachts	Type:	Motor Yacht Expedition or Explorer
Tonnage:	250.00	Top:	Enclosed Pilothouse
Range At Cruise	5200	Engines:	510 HP,Twin, Inboard, Diesel, Volvo Penta, D11,
Speed:		Staterooms:	6
Range At Max		Heads:	7
Speed:		Crew Berths:	2
Speed:	Cruising 10 Knots	Captain Cabin:	No
	Max 14 Knots	Classifications:	
Ext Designer:	AvA Yachts	MCA:	ISM:
Fuel Capacity:	8717.68 Gal		
Water Capacity:	1320.86 Gal		
Holding Tank:	528.34 Gal		
Location:	Antalya, Antalya Turkey		
Price:	(\$13,681,256 USD est.) €11,650,000 EUR		
Tax Status:	VAT Unpaid		

KANDO 90 WALKTHROUGH

Boarding the Kando 90 is via her portside passerelle or the swim platform if on a floating dock. Up six steps is an ample size Aft Deck with both fixed and loose seating around a dining table. The Salon next forward has a couch to starboard and two chairs to port. Next forward is an eight-place dining table.

Forward to starboard is a Day Head and the entrance to the full beam On-Deck Master Cabin with a large Head with two basins, toilet, bidet shower and a spa tub.

From the dining area forward to port is a large Galley and private stairs to a captains cabin on the lower level all the way forward. This cabin has a walkaround berth on centerline and a large Head and walk-in closet.

Back on the Main Deck in the entry foyer steps lead down to the four guest suites. Aft are matching walk-around queen berths with full Heads. Forward are matching double berth suites with full Heads

Back to the entry lobby steps lead above to the Skylounge Deck. All the way forward is a large Pilothouse with a centerline Helm and guest seating aft to stbd.

The full beam Skylounge has a walk behind bar with four stools and going aft two sofas facing inboard with occasional chairs aft.

A Day Head is located forward on the starboard side.

The boat deck has plenty of room for outdoor seating forward of the tender. Also on the boat deck are steps to the Flybridge.

The Flybridge has an upper Helm on centerline, a walk behind bar to port and a large dining area to starboard. Aft is a large sunbed area for several people. A large FRP hardtop covers much of the Flybridge.

BOAT'S CHARACTERISTICS

- Displacement Hull Form
- Unsinkable Hull on Flooding Water in any Compartment
- Minimum 2.10 m Free Height in Cabins
- 4x Control Stations including 2 Helm Bridges with Emergency Stop Buttons

STRUCTURAL MATERIALS

Hull:	High Tensile Marine Steel AH36
Superstructure:	Aluminum Alloy Almg 5083 H321
Hardtop:	Sandwich System Epoxy Composite
Fresh Water System:	Polypropylene Pipes
Sanitary System :	PVC Pipes
Fuel System:	Mild Steel Pipes
Sea Water Cooling System:	CuNiFe Pipes
Fire Extinguishing System:	Galvanized Steel Pipes
Bilge Suction System:	Galvanized Steel Pipes
Tank Air Vent System:	Galvanized Steel Pipes
Hydraulic System:	Seamless Steel Pipes
Stainless Steel Equipment:	AISI316L unless otherwise specified

ENGINES, PROPULSION SYSTEM, SPEED & RANGE

Main Engines: VOLVO-PENTA D11:

- 2x 510 HP @2250 RPM Heavy Duty Marine Engines

2x Gearbox: TWINDISK or ZF

Propulsion System: Long Shaft & Fixed Blade Propellers:

- AISI316L Stainless Steel Propeller Shafts

Max Speed: 13-14 Knots (95% Engine Load)

Cruise Speed: 8-10 Knots (60% Engine Load)

Cruise Range: 5,200+ Nautical Miles at Cruise Speed

MANEUVERING, STEERING & MOORING

4x Control Stations:

- 1x Wheelhouse, 1x Flybridge, 2x at Wings

4x Dual Electronic Main Engine Throttles : VOLVO-PENTA

1x Steering Gear: HIDROMARIN or DATA :

- Electro-Hydraulic Steering Gear Pump Actuated Cylinders
- Manual Operation Ability on Emergency
- Incorporated with rudder angle indicator and auto pilot system

2x Rudder Blades:

- 2x Steel Constructed, Foil Shaped Rudder Blades
- 316L S.S. Rudder Shaft

1x Bow Thruster: SIDE POWER SH700:

- 700 kg-f, Hydraulic operated a bow thruster actuated by central hydraulic power unit

2x Anchor Winch: HIDROMARIN or DATA:

- Hydraulic Operated and made of Stainless Steel AISI316L Anchor Winch connected to the central hydraulic power unit in the Engine Room. Joystick on Control Stations
- Two, polished stainless steel AISI316L chain locks

2x Mooring Capstans: HIDROMARIN or DATA:

Hydraulic Operated through Central Power Unit

- Polished Stainless Steel AISI316L & Raised Position with foot buttons

2x Anchors: INHOUSE:

- Galvanized Steel, High Holding Type, 1x 270 Kg, 1x 190 Kg, Seated at Port and Starboard Side

Chain:

- 18 mm, Grade II, total 255 m galvanized steel chain for each anchor incorporated with a digital chain meter goes through 2 x S.S. AISI304 hawse pipes
- Composite covered chain locker with sea water flush system, drains overboard

10x Bollards: INHOUSE:

- Highest Quality Polished Stainless Steel AISI316L, welded to the raised deck position
- 4x Large Size at the Fore Deck, 2x Large Size at the aft Main Deck, 2x Small Size at the Middle Main Deck, 2x Small Size at the Swimming Platform

EQUIPMENT & OUTFITTING

Fin Stabilizing System: SLEIPNER:

- Hydraulic Operated, Zero Speed Functionality

Air Conditioning System : WEBASTO:

- 180.000 BTU Chilled Water Compressor Unit, 380V AC, Heat & Cool

Generated On 12/13/2025 7:01 AM by WORLD YACHT GROUP SVC Account

WORLD YACHT GROUP USA

WORLD YACHT GROUP SVC

KANDO 90

Account

**info160920210306@world-yacht-
group.com**

worldyachtgroup.com

- Fan Coils in each guest cabins, salon and crew quarters
- Fresh Air Make-up Unit
- Volumes to be Air Conditioned; Main Deck Salon, Upper Deck Salon, All Guest & Crew Cabins, Wheelhouse, Galley, Crew Mess, Lazarette
- Air-Conditioned Spaces are Mechanically Ventilated

Wastewater Treatment System: TECNICOMAR:

- Ecomar 20, Capacity 2 cbm / day

Vacuum Toilet System: JETS

Electricity Extract Fan Ventilation in Toilets

Water Maker: SEA RECOVERY:

- 1800-2 GPD Aqua- Whisper DX 75 284 lt/h Capacity, Self-Flushing

Deck Tender Crane: OPACMARE or BESENZONI:

- Hydraulic Operated, 500Kg Capacity, With it's self Hydraulic Power Unit

Window Wipers in Wheelhouse : SPEICH

Passarella Gangway: INHOUSE

- Hydraulic, Remote Controlled, Adequate Length, Solid & Portable Handrails

Fuel Separator: ALFA LAVAL:

- MIB303

Flexible Propulsion Shaft Coupling: CENTA

Engine Room Ventilation Fans:

- Electric Driven & Centrifugal

Automatic Sliding, Salon Aft Doors:

- Highest Quality Polished Stainless Steel Framed Glass, Curved Shape
- Main Deck Salon & Upper Deck Salon

Satellite TV Antenna: INTELLIAN or KVVH:

- 1x 60cm Bowl, 1x 60cm Empty Dome

Inter Communication Phone System: PANASONIC:

- All Cabins, Main Deck Salon, Upper Deck Salon, Wheelhouse, Galley, Crew Mess, Flybridge, Lazarette

2x Led Search Lights:

- Electric Remote Control

8x Led Underwater Lights:

- 4x at the transom, 4x at the sides at the aft side

Teak Deck Covering on Weather Exposed Decks:

Generated On 12/13/2025 7:01 AM by WORLD YACHT GROUP SVC Account

WORLD YACHT GROUP USA

WORLD YACHT GROUP SVC

KANDO 90

Account

**info160920210306@world-yacht-
group.com**

worldyachtgroup.com

Page 6 of 21

- First Class Teak Wood, 12mm Thickness

Tempered Deck House Window Glasses:

Weather Exposed Deck Furniture & Cushions

- Seating Groups on Flybridge, Seating Groups on Aft Pool

Hard Top & Radar Mast:

- Moulded GRP, Sandwich System

Various Bulwark & Handrails:

- Highest Quality Polished Stainless Steel, AISI316L & Carbon Fiber

Guard Rails on Aft Swimming Platform:

- Highest Quality Polished Stainless Steel, AISI316L, Portable

Air Horn: KAHLENBERG

Navigation Lights:

- LED Lights, According to COLREG

Engine Room Heat & Fire Insulation: ROCKWOOL

Accommodation Spaces Heat Insulation : GLASSWOOL or ROCKWOOL

NAVIGATION ELECTRONICS

Radar & GPS Systems: RAYMARINE or Equivalent

- 3x 19" Touch Screen Color Display
- 2x Open Array Radar, 12Kw, 4Kw
- Autopilot Module, GPS Module, Sonar Module
- AIS650
- Sailor 6222 VHF
- Sailor 6110 GMDSS

MONITORING & ALARM INSTRUMENTS

Central Monitoring & Alarm System: MARETRON:

- Touch Screen Display in Wheelhouse and Crew Quarter
- Monitoring of Tank Levels, Bilge Levels, Diesel Generators, Propulsion Engines, Main Switchboard Voltage (220VAC + 380VAC), Shore Power Voltage, Battery Levels, Navigation Lights

Camera Monitoring System: SONY:

- 5x 1080p IR, IP Cameras
- 8 Channel HD Camera Recorder
- 15" Led Display in Main Helm Bridge

Magnetic Compass, Barometer, Hydrometer kit

Engines & Generators Digital Monitoring Indicators:

- Shall also be Monitored in MARETRON AMS

Tank Level Monitoring Indicators:

- Digital Indicators on Wheel Console
- Shall also be Monitored in MARETRON AMS

Bilge Level Alarms:

- Visible & Audible Alarms
- Shall also be Monitored in MARETRON AMS

ACCOMMODATION EQUIPMENT

Home Appliances for Galley: SIEMENS:

- 1x Cooking Owen, 1x Microwave Oven, 1x Induction Electric Cooking Range, 1x Dishwasher, 1x Inox Refrigerator

Home Appliances for Crew Mess: SIEMENS:

- 1x Cooking Owen, 1x Microwave Oven, 1x Induction Electric Cooking Range, 1x Dishwasher, 1x Inox Refrigerator

1x Washing Machine, 1x Dryer, 1x Ironing Mangle in Laundry: SIEMENS

1x Small Size Refrigerator in Flybridge Bar

1x Wine Coolers

1x Upper Deck Bar

3x Ice Cube Makers:

- 1x Upper Deck Bar, 1x Galley, 1x Flybridge Bar

LED TV's: SAMSUNG:

- 65" Smart Flat UHD 4K in Main Deck Salon – Retractable
- 65" Smart Flat UHD 4K in Upper Deck Salon – Fixed on the Wall
- 55" Smart Flat UHD 4K in Owner's Suite – Fixed on the Wall
- 40" Smart Flat UHD 4K in each cabin – Fixed on the Wall
- 40" Smart Flat UHD 4K in Crew Quarter – fixed on the wall

Home Theatre Sound System in Main Deck Salon

Stereo System on Pool Deck & Flybridge

INTERIOR FURNISHINGS

Cabins, Salon, Furniture & Decoration:

- Plywood Furniture
- Owner's Choice Veneer, Satin Varnish Finishing
- Artificial Ladder or Textile Upholstery
- Wooden/Carpet Floor in Cabins, Wooden/Carpet Floor in Salon
- Custom Size Spring Beds
- Textile Curtains

Toilets / Bathrooms:

- Artificial Granite Bench Tops
- Polycarbonate Shower Cabins
- Ceramic & Mosaic Tile Decoration
- Towel Dryers Heaters

EXTERIOR FURNISHINGS

Aft Pool Seating Area

- Watertight Upholstery with Sponge
- Fixed Wooden (Iroko) Table with Stainless Steel Leg
- Deck Bar with Cool Box

Fore Seating Area (if preferred by the Owner):

- Watertight Upholstery with Sponge

Flybridge:

- Control Station with Engines Throttle & Wheel
- Various Seating Groups & Watertight Upholstery with Sponge
- Grill & Bar House with Cool Box
- Sunbathing Area

SAFETY & SECURITY EQUIPMENT

- FM200 Fixed Fire Extinguishing System in Engine Room
- EPIRB + SART Emergency Beacons
- 2x Viking Life rafts On the Flybridge Deck
- Smoke Detection & Fire Alarm System in Engine Room
- Portable Fire Extinguishers in All Cabins
- Fire Blankets in Galley, Crew Lounge, Engine Room

PIPING SYSTEM & PUMPS

Fresh Water System:

- Filling, supplying cold water and circulating hot water connected to the freshwater storage tank, water maker and water heater, equipped with LIVERANI or equivalent electric driven, Fresh Water Pressure Pumps and hot water circulation pumps, SS or Bronze ball valves. Hot water circulation pipelines are to be heat insulated. Capacity of the pumps as per calculations

Sanitary Drain & Discharge System:

- Drainage of wastewater to the storage tanks and discharge the wastewater tank to Shore Connection on the aft deck and Wastewater Treatment Unit, equipped with electric driven, macerator pumps, SS or Bronze ball valves

Bilge Suction & Discharge System:

- Suction and discharge of bilge water from each of watertight compartment separately equipped with two electric driven self-priming, centrifugal, bronze pumps, SS or Bronze ball valves
- Water level gauges are to be provided with audible and visible alarm on main helm bridge

Water Fire Extinguishing System & Nozzles:

- Supplying sea water from sea chests to deck fire nozzles to the fire chests equipped with electric driven, centrifugal, Bronze, emergency pump, SS or Bronze ball valves

Fuel Filling & Supply & Transfer System:

- Filling fuel tanks and supplying fuel to the consumers and return lines to the tanks, transferring the fuel between storage tanks or outside shore connection by means of electricity driven fuel transfer pump and air ventilation of the fuel storage tanks
- Double Racor or equivalent filters for each fuel consumer on fuel supply lines

Sea Water Cooling System:

- A Central CuNiFe pipe system connected to two bottom sea chests in engine room with SS or Bronze butterfly valves and sea water strainers
- Engines, generators, and other consumers are to be cooled with sea water supply via branch lines connected to central sea water cooling pipe. Consumer's connection are to be made with Neoprene flexible hoses

Hydraulic System:

- Central hydraulic system is to consist of center power unit with electricity driven pump and PTO pumps on the main propulsion engines, seamless steel pipelines to operate bow thruster, anchor winches, capstans. Equipment is to be connected to the system with high pressure flexible hoses

Main Engines & Generators Exhaust System:

- Water cooled, Heat Insulated Main Engines exhaust pipes made of mild steel
- Muffler Exhaust System for Gensets

Air Conditioning System:

- Chilled water circulation to fan coils and water drain from fan coils to the tanks with polypropylene pipe lines. Chilled water circulation pipelines are to be heat insulated.

ELECTRICITY

Electricity Power Supply:

- 24V DC loads to be supplied via dedicated battery banks and with own battery charger/supply units
- 230V 1-phase & 400V 3-phases 50Hz AC Power Generation from Generators
- 400V 3-phases AC Power Supply Shore Connection

Battery Groups: VICTRON or MASTERVOLT or Equivalent:

- Marine Gel Service Batteries
- AGM Deep Cycle Engine Start Batteries
- AGM Deep Cycle Generator Start Batteries
- Marine Gel Emergency Batteries

Power Generator Plants:

- 2x 60 Kw, 400VAC 50Hz Marine Diesel Generator: KOHLER or equivalent
- Power Management System for all 2 generators to operate automatically
- Sound shields will be provided
- Note for Generator Capacities: Generator Capacities may be increased as per Owner's requirements and is subject to price increase

Inverters & Battery Chargers: VICTRON or MASTERVOLT or equivalent:

- Adequate Capacity Battery Charger Groups

24V DC / 230V AC / 400V AC Switchboards, Distribution Boxes & Fuses Accommodation

Accommodation Lighting, Interior & Exterior:

- LED Spotlights
- LED Spot, Emergency Lights

PAINTING & CORROSION PROTECTION

Exterior Putty & Paint System: AWLGRIP:

- Epoxy based putty on exterior surfaces above waterline with its epoxy-based primer
- Acrylic based final layer paint (colors owner choice)

Interior Paint System: TEKNOMARIN:

- Epoxy based primer paint on bilge and inside of the tanks. White color paint on bilge

Antifouling Paint Under Water: AKZO-NOBEL:

- 3 Layers

Zinc Anodes:

- 1 Year Protection

OPTIONAL EQUIPMENT & FEATURES UPGRADES

Dumb Waiter Between Galley & Flybridge: INHOUSE: €24,600.00

Stern Thruster 380VAC, SAC386 : SLEIPNER: €61,900.00

Fixed Glass Sky Window on Hardtop: INHOUSE: €21,800.00

Transformer Swimming Platform: INHOUSE: €140,600.00

Central Vacuum Cleaner System: €19,450.00

4 Persons Standard Jacuzzi on Flybridge : INHOUSE: €34,515.00

High Gloss Finish on Wooden Furniture : INHOUSE: €32,700.00

Charter Yacht Notation & MCA Compliance Package: €485,500.00

U.S. / European Electricity Power System Converter Package: €158,400.00:

- 60 kW Capacity

Caterpillar Engines Upgrade Package: CATERPILLAR: €156,400.00

- CAT C18 ACERT 600 bhp (447 kW) @1800 Rpm A-RATING IMO TIER2, EPA TIER3

Please Note : Optional Features Upgrade may extend the delivery time frame.

DELIVERY

Delivery Time: 20 Months

Boat Shall be Delivered as Seaworthy Condition at the Free Zone's Quay in Antalya

CLASSIFICATION

Built to B.V. Pleasure Yacht

Commercial Classification available upon request

COMMENTS

Gilman Yachts is the AvA appointed dealer for AvA Shipyard of Antalya, Turkey for North and South America and the outlying islands.

Having finished a 110' Kando series at the shipyard, we offer experience with the brand, the shipyard and the ownership of the yard.

Projects are delivered at very favorable price FOB Antalya and built to suit the electrical requirements of the buyer.

Completion time on KANDO 90 is 18 months from contract signing.

OTHER EXPENSES AT OWNER'S ACCOUNT

Non-Fixed, Loose Interior Decoration Components

- Chairs, Dishes, Fork, Knife, Linens, etc.

Flag Registration Expenses & Taxes

Tender Boat / Rescue Boat

WARRANTY TERMS & CONDITIONS

The BUILDER, for a period of 12 months following acceptance of the YACHT by the BUYER, undertakes to repair and rectify at its own cost and expense and free of charge to the BUYER, any defects - including latent defects or deficiencies - concerning the YACHT or parts thereof, which are caused by defective material and/or poor workmanship on the part of the BUILDER, its servants, employees or Subcontractors, but excluding defects arising after delivery due to normal wear and tear or improper handling of the YACHT or caused or aggravated by omission or improper use or maintenance of the YACHT on the part of the BUYER, its servants or agents and excluding BUYER's Supplies.

The repairs, replacements and/or rectifications shall be made at the BUILDER's yard. However, the BUYER may, after having notified the BUILDER in writing, cause the necessary repairs, replacements and/or rectifications to be carried out elsewhere provided that the BUILDER declares its consent to do so. In such case, the BUILDER shall, at its own cost, be entitled to forward necessary replacement parts or materials. The BUILDER's liability shall in such case be limited to pay the cost of repairs, including travelling and forwarding expenses, to the price of the work which the BUILDER would normally charge at its yard. In any case, the BUILDER shall co-operate with the BUYER to find proper solutions to rectify the deficiency.

DISCLAIMER

The Company offers the details of this vessel in good faith but cannot guarantee or warrant the accuracy of this information nor warrant the condition of the vessel. A buyer should instruct his agents, or his surveyors, to investigate such details as the buyer desires validated. This vessel is offered subject to prior sale, price change, or withdrawal without notice.





Generated On 12/13/2025 7:01 AM by WORLD YACHT GROUP SVC Account

WORLD YACHT GROUP USA

WORLD YACHT GROUP SVC

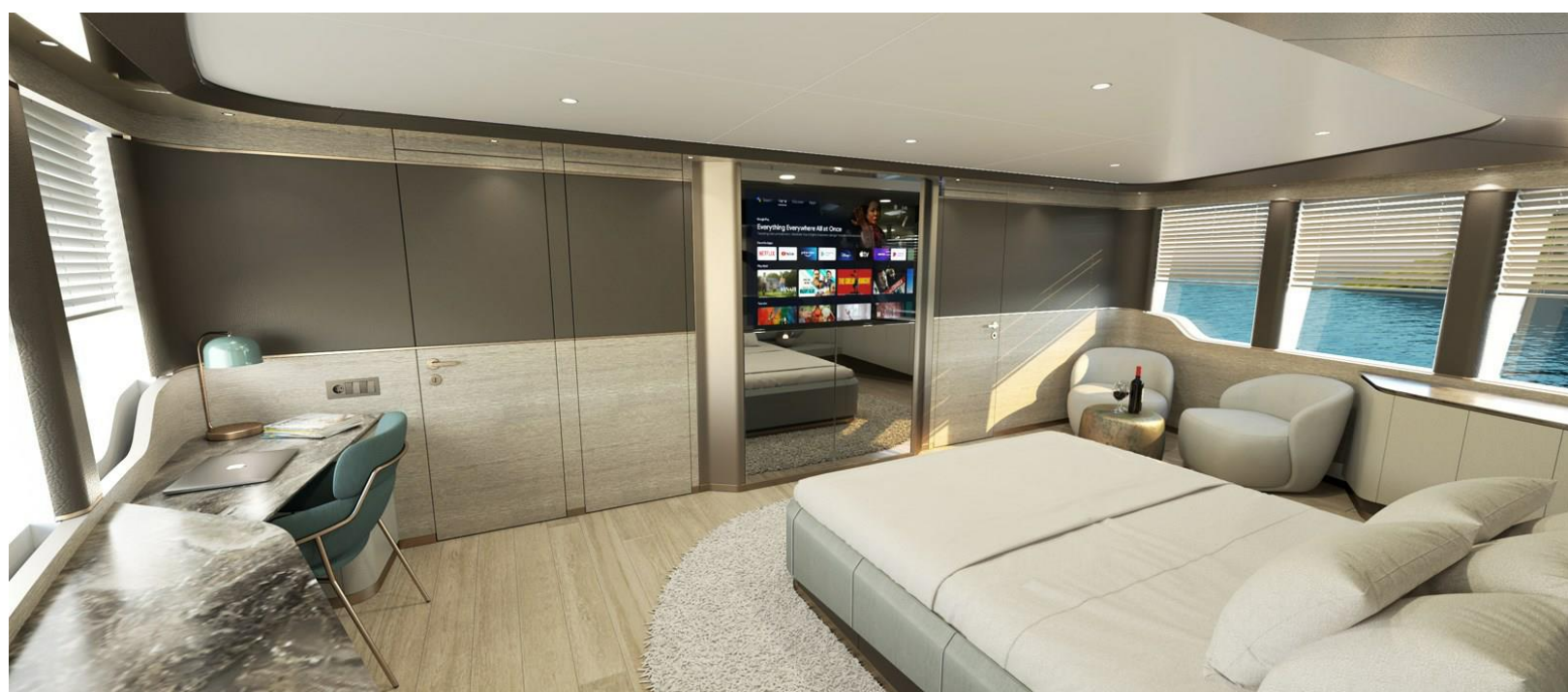
KANDO 90

Account

**info160920210306@world-yacht-
group.com**

worldyachtgroup.com

Page 16 of 21



Generated On 12/13/2025 7:01 AM by WORLD YACHT GROUP SVC Account

WORLD YACHT GROUP USA

WORLD YACHT GROUP SVC

KANDO 90

Account

**info160920210306@world-yacht-
group.com**

worldyachtgroup.com

Page 17 of 21





Generated On 12/13/2025 7:01 AM by WORLD YACHT GROUP SVC Account

WORLD YACHT GROUP USA

WORLD YACHT GROUP SVC

KANDO 90

Account

**info160920210306@world-yacht-
group.com**

worldyachtgroup.com

Page 19 of 21



KANDO90-GENERAL ARRANGEMENT_NEW PROFILE



Generated On 12/13/2025 7:01 AM by WORLD YACHT GROUP SVC Account

WORLD YACHT GROUP USA

WORLD YACHT GROUP SVC

KANDO 90

Account

**info160920210306@world-yacht-
group.com**

worldyachtgroup.com

Page 20 of 21

KANDO90-GENERAL ARRANGEMENT_NEW PROFILE



Generated On 12/13/2025 7:01 AM by WORLD YACHT GROUP SVC Account

WORLD YACHT GROUP USA

WORLD YACHT GROUP SVC

KANDO 90

Account

**info160920210306@world-yacht-
group.com**

worldyachtgroup.com

Page 21 of 21