



**Daria
Tomassetti**
ELUMAGEE II



LOA:	51' 3" (15.6m)	Delivery/Model	2007
Beam:	15' 9" (4.8m)	Year:	
Max Draft:	4' 7" (1.38m)	Model:	Maestro 51
Speed:	24 Knots 27 Knots	Builder:	APREAMARE
Flag:	italian	Type:	Motor Yacht Flybridge
Location:	N/A, Italy	Staterooms:	3
VAT Paid:	VAT Paid	Fuel Cap:	2240 L (591.75 Gal)
		Water Cap:	600 L (158.5 Gal)
		Engines:	2x, MAN, D2876LE405, 730 HP
		Price:	(\$476,048 USD est.) €460,000 EUR

Generated On 12/1/2022 1:48 AM by DARIA TOMASSETTI SVC Account

DARIA TOMASSETTI

DARIA TOMASSETTI SVC
Account
www.dariatomassetti.com

ELUMAGEE II

Additional Specifications For ELUMAGEE II:

LOA:	51' 3" (15.6m)	Delivery/Model	2007
Beam:	15' 9" (4.8m)	Year:	
Max Draft:	4' 7" (1.38m)	Year Built:	2007
Hull Material:	GRP	Builder:	APREAMARE
Superstructure:	GRP	Model:	Maestro 51
Hull Config:	Planing	Type:	Motor Yacht Flybridge
Hull Designer:	Zuccon	Top:	Enclosed
Deck Material:	Teak and Fiberglass	Engines:	730 HP, Twin, 2007, Inboard, Diesel, MAN, D2876LE405, 1200hrs / 1200hrs
Tonnage:		Staterooms:	3
Speed:	Cruising 24 Knots Max 27 Knots	Sleeps:	7
Ext Designer:	Zuccon International	Heads:	3
Fuel Capacity:	2240 L (591.75 Gal)	Classifications:	
Water Capacity:	600 L (158.5 Gal)	MCA: ISM:	
Flag:	italian		
Location:	N/A, Italy		
Price:	(\$476,048 USD est.) €460,000 EUR		
Tax Status:	VAT Paid		

General description

3 guest cabins with 2 heads and independent crew cabin: tropical air conditioning cold/hot- Bose hifi system (control panel in each cabin and external space)- satellite antenna- TV lcd in guest cabins.

Complete Raymarine navigations- hydraulic gangway (400 kg.)

In perfect condition.

NAVIGATION & COMMUNICATION EQUIPMENT

Main deck helm: - MAN computer panels - electronic throttle ZF - VHF - RAYMARiNE automatic pilot - RAYMARINE Gps E120 3D - RADAR - deepsounder - hydraulic flaps - bow thruster - night lights.

Flying bridge helm: MAN computer panels- RAYMARINE automatic pilot- RAYMARINE Gps E 120 3 D.

Additional informations

Less than one year after from the happy debut of Maestro line, inaugurated by Apremare with Maestro 65, it was imminent the launch of the Maestro 51.

The entry level Maestro 51 shares with the 65 feet model some particular characteristics as for example the technological innovations and the original design: the result is a boat with harmonious lines, where the direct relation with the sea seems to be the main aim of the designers. The boat is born from the collaboration between the Zuccon International Project, , as regards the superstructures and the layout of the interiors, and by Umberto Tagliavini with support from the Engineering Department of the Ferretti Group.

maestro 51



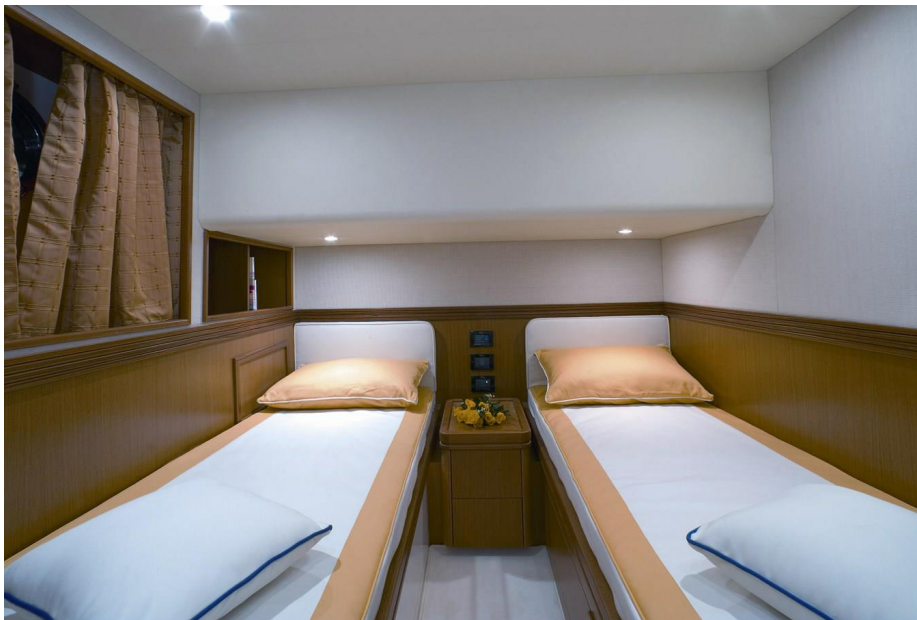
dinette



Maestro51_master cabine



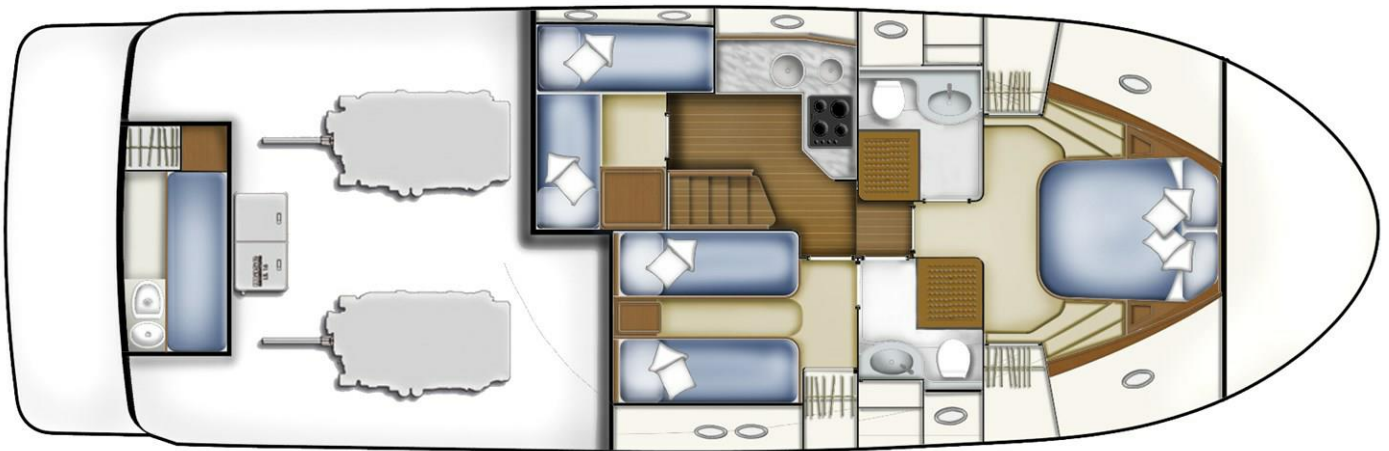
Maestro51_twin cabine



Maestro51-6



Maestro 51 ponte sottocoperta_rid



Maestro51-ponte coperta_rid



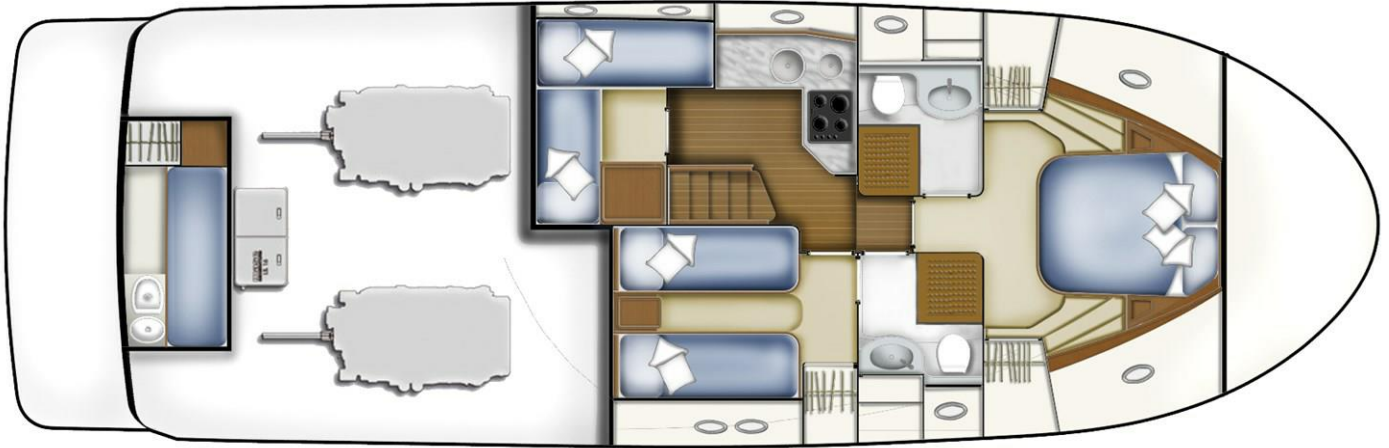
Generated On 12/1/2022 1:48 AM by DARIA TOMASSETTI SVC Account

DARIA TOMASSETTI

DARIA TOMASSETTI SVC
Account
www.dariatomassetti.com

ELUMAGEE II

Maestro 51ponte sottocoperta_rid



Generated On 12/1/2022 1:48 AM by DARIA TOMASSETTI SVC Account

DARIA TOMASSETTI

DARIA TOMASSETTI SVC
Account
www.dariatomassetti.com

ELUMAGEE II

Maestro51-ponte coperta_rid

