



world yacht group

Experts in luxury yachts

■



LOA:	95' 6" (29.1m)	Delivery/Model	2016
Beam:	22' 2" (6.75m)	Year:	
Max Draft:	6' 3" (1.9m)	Model:	SL96
Tonnage:	0.00	Builder:	SANLORENZO
Speed:	25 Knots 28 Knots	Type:	Motor Yacht Flybridge
Flag:	Malta	Staterooms:	4
Location:	Cancun, Quintana Roo Mexico	Fuel Cap:	11500 L (3037.98 Gal)
VAT Paid:	VAT Paid	Water Cap:	1900 L (501.93 Gal)
		Engines:	2x, MTU, MTU 16v2000m84, 2216 HP
		Price:	(\$6,075,266 USD est.) €5,400,000 EUR

Generated On 5/11/2025 3:53 AM by WORLD YACHT GROUP SVC Account

WORLD YACHT GROUP USA

WORLD YACHT GROUP SVC

Account

**info160920210306@world-yacht-
group.com**

worldyachtgroup.com

Page 1 of 18

Additional Specifications For -:

LOA:	95' 6" (29.1m)	Delivery/Model	2016
Beam:	22' 2" (6.75m)	Year:	
Max Draft:	6' 3" (1.9m)	Year Built:	2016
Hull Material:	GRP	Builder:	SANLORENZO
Range At Cruise Speed:		Model:	SL96
Range At Max Speed:		Type:	Motor Yacht Flybridge
Speed:	Cruising 25 Knots Max 28 Knots	Engines:	2216 HP, Twin, 2016, Inboard, Diesel, MTU, MTU 16v2000m84, 960hrs / 960hrs
Int Designer:	Sanlorenzo	Staterooms:	4
Ext Designer:	Sanlorenzo	Heads:	4
Fuel Capacity:	11500 L (3037.98 Gal)	Crew Quarters:	1
Water Capacity:	1900 L (501.93 Gal)	Crew Berths:	2
Flag:	Malta	Captain Cabin:	No
Location:	Cancun, Quintana Roo Mexico	Classifications:	
Price:	(\$6,075,266 USD est.) €5,400,000 EUR	MCA: ISM:	
Tax Status:	VAT Paid		

INTERIORS MAIN DECK

LIVING AREA:

1. MATERIALS:

Stained grey oak floor with anti-slip treatment; lacquered wood ceiling with a central stripe in Nuvola Canapa leather; Nuvola Canapa leather window frames; bow wall in Nuvola Canapa leather and satin metallic inserts; fumè mirror on starboard side; storage cabinets in grey oak on port side; grey satin oak bulkhead storage with metallic inserts; Nuvola Canapa leather Vanity desk.

2. FURNITURE:

"L" shaped light grey sofa; red leather armchair; smoking table by Minotti; grey marble table and no. 10 Nuvola Canapa leather chairs; manual drapes.

3. DAILY TOILET:

Calacatta marble floor and sink top; door, sink furniture and walls in oak; gloss lacquered ceilings

4. GALLEY:

Allura vinyl floor, lacquered wood ceilings, natural satin oak bulkheads. Black gloss granite worktop in galley; table with oak expandable top and inox base; no. 2 stools; oak sofa with Nuvola Leather cushions; extra insulations between galley and master cabin.

MASTER CABIN:

1. MATERIALS:

Moquette floor, lacquered wood ceilings with central zone in Nuvola Canapa leather; stained grey satin oak bulkheads with mirror TV cover; Nuvola Canapa leather window frames.

2. FURNITURE:

Stained grey oak bow cabinet, fumè mirror with metal frame door; grey satin oak ship's side furnishings with satin metallic inserts, Nuvola Canapa leather vanity desk, bed and nightstand; Nuvola Canapa leather top and black-nichel base Minotti bench.

3. BATHROOM:

Gloss marble Calacatta floor, shower and sink top; gloss lacquered wood ceilings and bulkheads; grey oak sink cabinet.

INTERIORS LOWER DECK

VIP CABIN:

1. MATERIALS:

Moquette floor; lacquered wooden ceilings with over the bed zone in Nuvola Canapa leather; grey oak bulkheads, Gray satin oak TV bulkhead.

2. FURNITURE:

Nuvola Canapa leather pullman bed, grey oak bulkhead cabinet, Nuvola Canapa bench by Minotti; safe.

3. BATHROOM:

Gloss Calacatta marble floor; gloss lacquered wood ceilings, shower and bulkheads; satin grey oak sink cabinet.

GUEST CABIN:

1. MATERIALS:

Moquette floor; lacquered wooden ceilings with over the bed zone in Nuvola Canapa leather; grey oak bulkheads, Gray satin oak TV bulkhead.

2. FURNITURE:

No. 2 Nuvola Canapa leather single sliding beds. Additional pullman bed in port side cabin.

CREW AREA:

1. MATERIALS:

Moquette floor, gloss lacquered ceilings, natural oak bulkheads and furniture. Gloss lacquered for ceilings, floor and shower in bathroom; painted teak shower floor.

EXTERIORS

EXTERIORS:

1. STERN COCKPIT:

Norwegian curtains; micro-perforated fabric for summer cover; electric up/down table.

2. BOW AREA:

Bench with cushions.

3. UPPER BRIDGE:

Lateral balcony in salon with sliding door.

4. FLYBRIDGE:

GRP hardtop; teak floor, exterior furniture by Paola Lenti; bar cabinet by Boffi; inox column shower, 8-people table; no. 3 sofas, sun awning area with cushions.

NAVIGATION

1. WHEELHOUSE:

No. 2 multi-functions monitor (plotter, radar, GPS); touch screen for the utilities on board; speedometer; depth sounder, anemometer, rudder angle sensors, autopilot, VHF, Raymarine gold upgrade package.

2. FLYBRIDGE:

No. 1 multi-functions monitor (plotter, radar, GPS); touch screen for the utilities on board; speedometer; depth sounder, anemometer, rudder angle sensors, autopilot, VHF.

SATELLITE ANTENNAS

GPS, Radar, Open Array, VHF, TV

HOUSEHOLD APPLIANCES

1. GALLEY:

90 cm cooktop; extractor hood; 90 cm oven; microwave oven, fridge, freezer by Gaggenau; dishwasher by Zanussi; goods lift.

2. MAIN SALON:

Fridge by Frigonautica; icemaker by Vitrifrigo; wine cooler by Gaggenau. Flybridge: grill by Siemens; icemaker by Vitrifrigo; fridge by Frigonautica.

3. CREW AREA:

Washing machine and dryer by Miele.

4. OTHERS:

4G modem.

AUDIO VIDEO

1. MAIN DECK:

- SALON: Samsung LED TV 48"; no. 1 multi area amplifier with AirPlay; home theatre kit With subwoofer, no. 2 ceiling integrated speakers with connection to cockpit, flybridge and bow area; no. 1 dvd Bluray 3D reader; remote.
- DINING AREA: no. 2 ceiling integrated speakers.
- MASTER CABIN: Samsung LED TV 48"; home theatre kit with subwoofer, no. 2 ceiling integrated speakers; no. 1 dvd Bluray 3D reader; remote.

2. LOWE DECK:

- STARBOARD AND PORT SIDE GUEST CABINS: no 1 Hi-Fi system with no. 2 ceiling integrated speakers and integrated DVD reader; Samsung LED TV 32"; remote control.
- VIP CABIN: Samsung LED TV 40"; Hi-Fi system with no. 2 ceiling integrated speakers and integrated DVD reader; remote control.

3. EXTERNAL AREAS:

- FLYBRIDGE: Samsung LED TV 40" in pilot cabinet; no. 2 ceiling integrated speakers connected to the salon.
- COCKPIT: no. 2 ceiling integrated speakers connected to the salon.

SL96_3



SL96_4



SL96_5



SL96_6



SL96_8



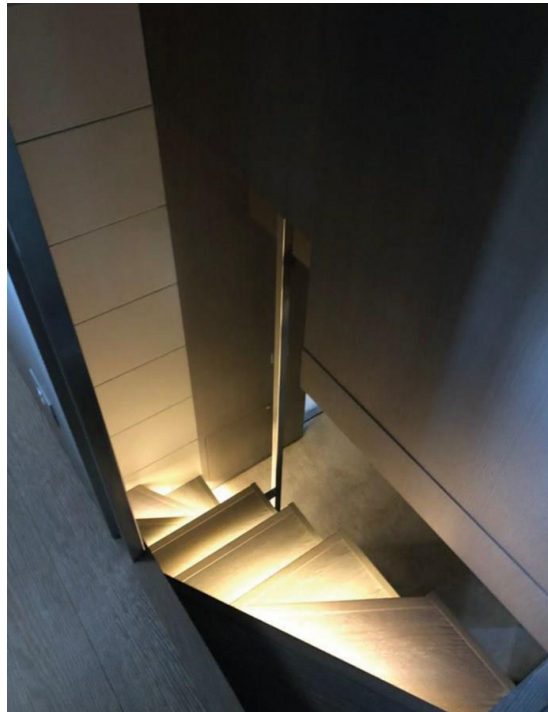
SL96_9



SL96_10



SL96_7



SL96_11



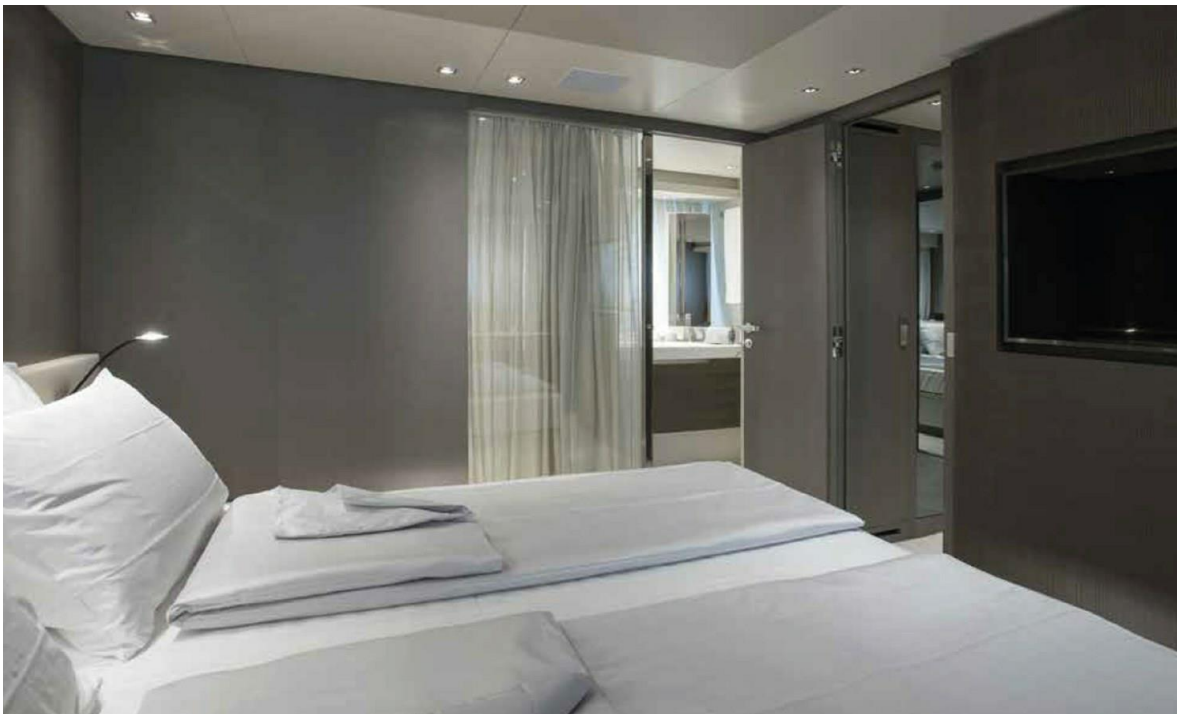
SL96_12



SL96_13



SL96_14



SL96_15



SL96_16



SL96_17



Generated On 5/11/2025 3:53 AM by WORLD YACHT GROUP SVC Account

WORLD YACHT GROUP USA

WORLD YACHT GROUP SVC

Account

**info160920210306@world-yacht-
group.com**

worldyachtgroup.com

Page 14 of 18

SL96_18



Generated On 5/11/2025 3:53 AM by WORLD YACHT GROUP SVC Account

WORLD YACHT GROUP USA

WORLD YACHT GROUP SVC

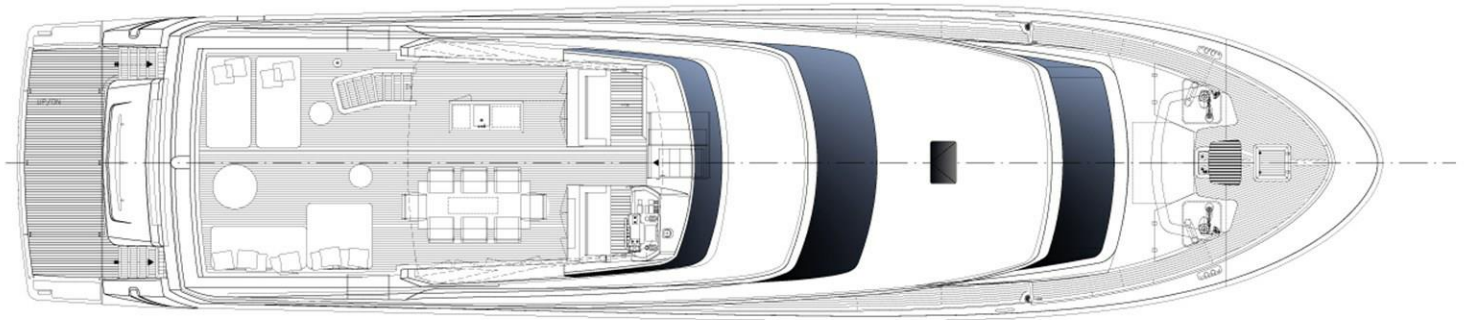
Account

info160920210306@world-yacht-
group.com

worldyachtgroup.com

Page 15 of 18

SL96_19



Generated On 5/11/2025 3:53 AM by WORLD YACHT GROUP SVC Account

WORLD YACHT GROUP USA

WORLD YACHT GROUP SVC

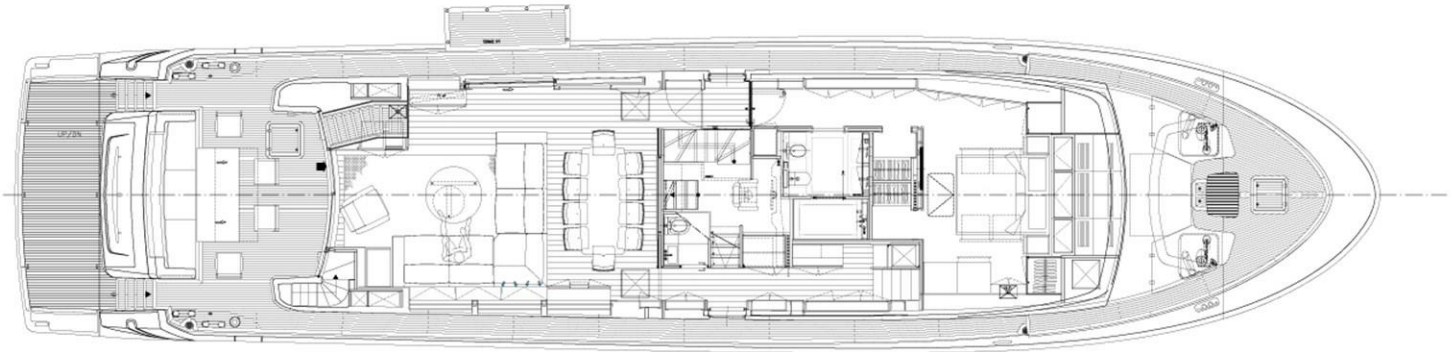
Account

info160920210306@world-yacht-
group.com

worldyachtgroup.com

Page 16 of 18

SL96_20



Generated On 5/11/2025 3:53 AM by WORLD YACHT GROUP SVC Account

WORLD YACHT GROUP USA

WORLD YACHT GROUP SVC

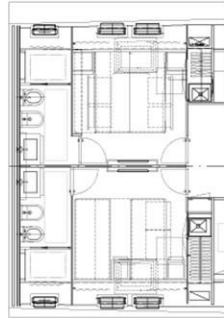
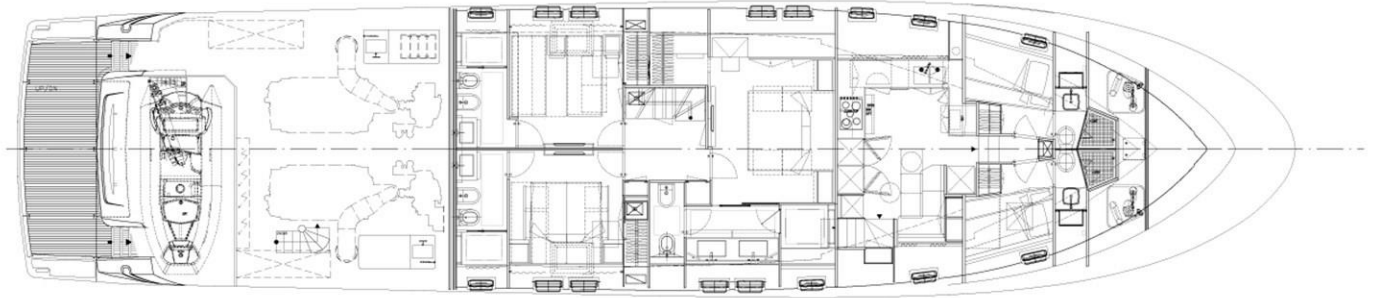
Account

info160920210306@world-yacht-
group.com

worldyachtgroup.com

Page 17 of 18

SL96_21



Transformable VIP's cabin