

**Lark**

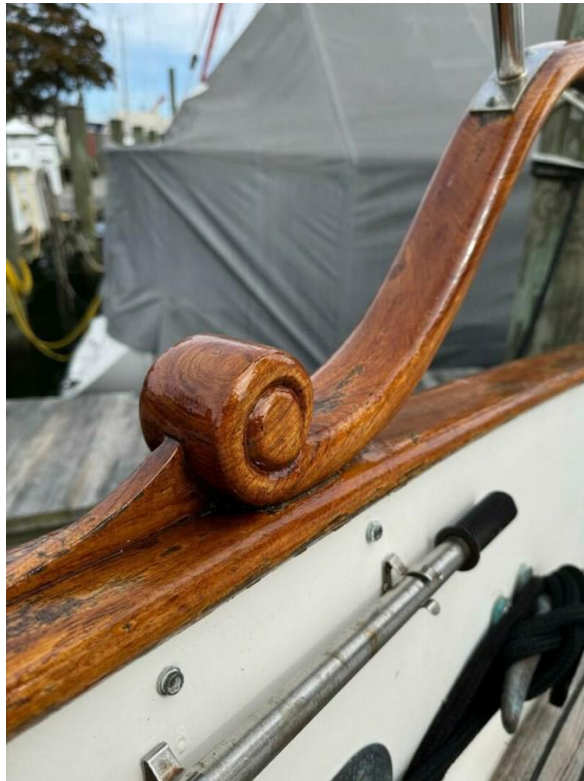
36' 10" (11.23m) | GRAND BANKS MARINE |  
1988



<b>Type</b>	<b>Trawler Yacht</b>	<b>Classification</b>	--
<b>Top</b>	--	<b>Class Type</b>	--
<b>Model</b>	<b>36 Classic</b>	<b>Builder</b>	<b>GRAND BANKS MARINE</b>
<b>Manuf. Year</b>	<b>1988</b>	<b>Naval Architect</b>	--
<b>Refit Year</b>	--	<b>Interior Design</b>	--
<b>LOA</b>	<b>36' 10" (11.23m)</b>	<b>Hull</b>	<b>Fiberglass</b>
<b>Beam</b>	<b>12' 8" (3.86m)</b>	<b>Deck</b>	--
<b>Draft Min/Max</b>	<b>-- / 4' (1.22m)</b>	<b>Engines</b>	<b>2x, Lehman, 135 HP</b>
<b>GRT</b>	<b>26000 Lbs</b>	<b>Max Speed</b>	<b>7.5 Knots</b>
<b>Fuel</b>	<b>400 Gal</b>	<b>Cruise Speed</b>	<b>6 Knots</b>
<b>Water</b>	<b>154 Gal</b>	<b>Range</b>	--
<b>Flag</b>	<b>United States</b>	<b>Accommodations</b>	<b>6 in 2 strms</b>

**ASKING PRICE: \$120,000 USD**











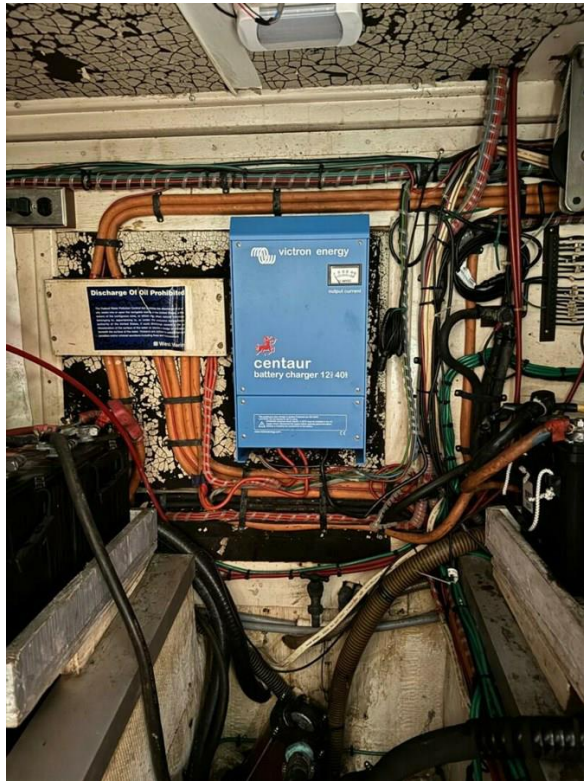














## Description

This 1988 Grand Banks 36 Classic –LARK is waiting for its next owner to take her up and down the coast and maybe even the Bahamas. Lots of great features have been added and upgraded to this already well designed and apportioned trawler. A few notables are: walk-in shower in aft cabin (with 2 separate berthing options), both aft and starboard saloon cabin doors, twin (two) Ford Lehman 135 hp engines, new electronics package (Garmin suite), and well maintained throughout. Call to schedule your showing today and see why the Grand Banks 36 Classic is still sought after as a fantastic cruising option.

## Overview

### Recent Upgrades

Navigation/Electronics/Electrical

#### 2022

3 new 6000 BTU MSBAK2 MarineAire Reverse Cycle HVAC units (Aft Cabin, Main Salon, Fwd Cabin)  
Velvet Drive Transmissions

-

#### 2023

New 12-inch Touchscreen Garmin GPSMAP® 8612xsv Chartplotter  
New Garmin Depth Transducer  
New Garmin GMR™ 18 xHD Radome Radar on Mast with Brackets (Professionally Installed)  
New Smoke Detectors  
Microwave in Galley

-

#### 2024

New Garmin 215 Fixed-Mount VHF Radio with AIS (Receive Only) and NMEA 2000® Network at Saloon Helm  
New Garmin GHS™ 11 Wired VHF Handset on Fly Bridge  
New Sony Stereo Radio with Bluetooth, CD Player, USB/AUX with Remote  
New Sony Marine Audio Speakers on Fly Bridge  
New Barometer in Salon  
New Clock in Salon  
New Marinco MRV Wiper Motors (3)  
New Marinco Windshield Wiper Arms Installed (3)  
New 50 AMP Shore Power Cord and a Double 30A-50 A Splitter  
Electric Hoist for Dinghy (Mounted on the Spar Boom)  
Electric Toilets in Both Forward and Aft Heads  
New Fixed-Mount Exterior Electric Air Horn  
New Macerator Pump for Holding Tank Discharge  
New LED Warning Lights Installed at Helm  
New Stove Exhaust Vent Blower

### **Main Salon**

The Main Salon of the Grand Banks 36 Classic has 2 entrances, one from each side companionway. The starboard side entry puts you immediately at the interior Helm, making single handed and shorthanded docking a breeze. The port side entry place you at the aft end of the Salon but gives you immediate access to the Master cabin. Walking in at this entrance gives you a great view of a well laid out living space. A flip up tabletop (gullwing style) with very comfortable cushioned seating in a wraparound L style makes dinner with guests very easy and accessible. The Galley is well apportioned and designed linearly along the port side, with a flip down Counter/Heat Sheils combo at the stove/oven and 2 fill in counter inserts at the sink. Included is a microwave for convenience cooking. Fantastic amount of natural light come in with great views all around, keeping you in touch with your environment while anchored or easily capable of standing watch from the interior helm in less than pleasant conditions. Lots of upgrades have been added to the Main Salon: be sure to check them out elsewhere in this listing.

### **Aft (Master) Cabin**

Stepping down into the Aft Cabin, generally considered the Master, you are greeted with tons of storage on your right side. Beautiful louvered doors hide tons of hanging storage with light that is automatically on when the door is opened. TWO roomy berths flank the large space in the cabin. On the port side is a nice single bunk that doubles as storage space when not in use. The assumed Master Berth area is a roomy double on the starboard side, with immediate access to a well-designed head area, complete with Fully separate shower stall, new electric head, and a nicely sized vanity with storage. Want to exit straight out to the deck area without going through the Salon? No problem. There is an egress hatch/companionway at the aft end of the cabin that can also double as a screened opening for those comfortable nights out on the hook enjoying the paradise that you are exploring. Tons of storage was designed into this space, which helps answer why the 36 Classic is so often sought after as a cruisers liveaboard, Great Looper, and that Bahamas ready trawler.

### **Forward Cabin**

The Forward Cabin, or guest cabin/overflow storage cabin, is very comfortable with good storage as you come down the stairs. V Berth accommodates 2 single berths or fill in the "V" and have a comfortable Queen/Double sleeping arrangement. Attached head affords your guests a newly upgraded electric head, with a curtained shower area, making this semi-wet head/shower design. Plenty of head room throughout the cabin and head make this a very nice guest quarter.

### **Engines/Generator**

-

### **Engines & Generator**

- Both Ford Lehman Engines Professionally Serviced by Diversified Marine Services (Annapolis 2024)
- Onan Genset Professionally Serviced by Diversified Marine Services (Annapolis 2024)
- New Transmission Oil Heat Exchangers Installed on Both Lehman Engines (2024)
- Well Stocked with Engine Replacement Parts

### **On Deck**

-

#### **Exterior (ALL Done or Purchased in 2024)**

- New 44 lb (20 kg) Delta Anchor
- New 200+ ft Anchor Chain
- New Teak Aft Platform for Dinghy (or relaxing with sundowners)
- New Manual Bilge Pump Installed (Located by Salon Helm)
- New Deck Chairs and Table (Camping Style for Easy Stowage)
- New Life Sling Throwable PFD
- New Faucets and Shower Heads Throughout
- Complete Set of Window Covers (Mesh) and Teak Rail Covers
- Recent Sanding of ALL Exterior Deck Teak
- Recent Exterior Rail and Trim Teak Refinish

Walking around the deck is easy to do with a comfortably wide companionway with sturdy (and nicely varnished) handrails keeping you and your guests aboard. Easy access to the windlass for anchoring or to the forward electrical hook up. There is also a rear electrical hook up should that be closer (a great design feature of this Grans Banks). Also aft is a teak swim platform and a fresh water washdown area. Up on the Fly Bridge there is fantastic space both covered and uncovered. Fore and aft facing seating makes entertaining underway or at the dock a common place thing to do. Hard Bimini also shields you from the sun and light rain.