



world yacht group

Experts in luxury yachts

## PAB



<b>LOA:</b>	104' 8" (31.9m)	<b>Delivery/Model Year:</b>	2004
<b>Beam:</b>	23' 4" (7.1m)	<b>Model:</b>	Admiral 105
<b>Max Draft:</b>	7' 3" (2.2m)	<b>Builder:</b>	ADMIRAL YACHTS
<b>Tonnage:</b>	182.00	<b>Type:</b>	Motor Yacht
<b>Speed:</b>	23 Knots 30.5 Knots	<b>Staterooms:</b>	4
<b>Flag:</b>	uk	<b>Fuel Cap:</b>	22000 L (5811.78 Gal)
<b>Location:</b>	San Remo, Liguria Italy	<b>Water Cap:</b>	4000 L (1056.69 Gal)
<b>VAT Paid:</b>	VAT Paid	<b>Engines:</b>	1x, MTU,
		<b>Price:</b>	(\$2,751,912 USD est.) €2,450,000 EUR

Generated On 5/9/2025 1:55 AM by WORLD YACHT GROUP SVC Account

**WORLD YACHT GROUP USA**

**WORLD YACHT GROUP SVC**

**PAB**

**Account**

**info160920210306@world-yacht-  
group.com**

**worldyachtgroup.com**

Page 1 of 11

### Additional Specifications For PAB:

<b>LOA:</b>	104' 8" (31.9m)	<b>Delivery/Model</b>	2004
<b>Beam:</b>	23' 4" (7.1m)	<b>Year:</b>	
<b>Min Draft:</b>	7' 3" (2.2m)	<b>Year Built:</b>	2004
<b>Max Draft:</b>	7' 3" (2.2m)	<b>Refit Year:</b>	2021
<b>Hull Material:</b>	Aluminum	<b>Builder:</b>	ADMIRAL YACHTS
<b>Superstructure:</b>	Aluminum	<b>Model:</b>	Admiral 105
<b>Deck Material:</b>	Teak	<b>Type:</b>	Motor Yacht
<b>Tonnage:</b>	182.00	<b>Engines:</b>	Single, MTU,
<b>Range At Cruise</b>	1200	<b>Staterooms:</b>	4
<b>Speed:</b>		<b>Sleeps:</b>	10
<b>Range At Max</b>	1200	<b>Captain Cabin:</b>	No
<b>Speed:</b>		<b>Classifications:</b>	
<b>Speed:</b>	Cruising 23 Knots Max 30.5 Knots	<b>MCA:</b>	<b>ISM:</b>
<b>Int Designer:</b>	Ivana Porfiri		
<b>Ext Designer:</b>	Admiral		
<b>Fuel Capacity:</b>	22000 L (5811.78 Gal)		
<b>Water Capacity:</b>	4000 L (1056.69 Gal)		
<b>Flag:</b>	uk		
<b>Location:</b>	San Remo, Liguria Italy		
<b>Price:</b>	(\$2,751,912 USD est.) €2,450,000 EUR		
<b>Tax Status:</b>	VAT Paid		

## **Description**

### **TANKAGE**

Fuel: 22,000 L  
Lubrication oil: 200 L  
Fresh water: 4,000 L  
Grey water: 800 L  
Black water: 800 L  
Engines: 2 x MTU 12V 396TE94 2285 HP

### **MACHINERY**

Engine hours: 1100  
Generators: 2 x Kohler 35 kW, 1 x Kohler Night Generator 24 kW  
Generator hours: 2500

### **PROPULSION & STEERING**

- ZF Gearbox
- V Drive ZF4600V Transmission
- 2 x Four-blade propeller
- Idrosystem Bowthruster

### **STABILISERS**

Stabilisers at anchor:  
Stabilisers underway:  
Yes  
Yes  
Stabilisers details: CMC Marine Zero Speed H60

### **MECHANICAL**

- Idromar Watermaker 350 L / h
- 2 x 80 L Hot Water Boiler
- Frigit 3 Compressor Airconditioning
- Hamann Sewage Treatment System
- Jet Toilet System
- 2 x Separ Fuel Separator Filter
- Alfa Laval Oily Water Separator

### **ELECTRICAL**

- 12 V / 24 V / 220 V / 380 V Voltage
- Mastervolt Inverter
- 8 x Service Battery
- 2 x Engine Battery
- 3 x Generator Battery

### **COMMUNICATION & NAVIGATION EQUIPMENT**

Communications Equipment:

- Furuno MX 700 Navtex
- Nera Satcom
- Furuno VHF
- Furuno handheld VHF
- Broadband Internet
- GSM

Navigation Equipment:

- 2 x Furuno GP 90 GPS
- Lorenz Starlight Plus Chart Plotter
- Raymarine Series 9 Chart Plotter
- Furuno mg Radar
- Furuno FCV 620 Echo Sounder
- Furuno Graphic Depth Sounder

Generated On 5/9/2025 1:55 AM by WORLD YACHT GROUP SVC Account

---

**WORLD YACHT GROUP USA**

**WORLD YACHT GROUP SVC**

**PAB**

**Account**

**info160920210306@world-yacht-  
group.com  
worldyachtgroup.com**

Page 3 of 11

- Navionics AP 3003 Gold Autopilot
- Furuno F130 Wind Instruments
- Plastimo Magnetic Compass
- Furuno F30 Gyro Compass

#### **ENTERTAINMENT**

- SeaTel Sat TV
- 7 x TV (Loewe and Samsung)
- DVD
- Creston Music System

#### **DOMESTIC APPLIANCES, EQUIPMENT & LAUNDRY**

##### **Galley:**

- 3 x Frigit Refrigerator
- Frigit Freezer
- Miele Oven
- Nef Stove
- Miele Microwave
- Frigit Ice maker
- Miele Dishwasher

##### **Laundry:**

- Miele Washing machine
- Miele Dryer machine

#### **ACCOMMODATION**

10 guests in a 4 cabin layout with an enviable master cabin on the main deck. 1 Master, 1 Double, 2 Twin

#### **DECK**

##### **Anchor System:**

- 2 x Lofrans 3500 W Anchor Windlass
- 2 x 120m anchor chain

##### **TENDER & TOYS**

- Williams 385

Note: Subject to change and/or negotiation during the buying process.

#### **SAFETY & SECURITY**

##### **Safety:**

- EPIRB
- 2 x Eurovinil 12 PAX Life Raft
- 18 x Life Jacket
- 2 x Searchlight
- Ship Alarms

##### **Firefighting:**

- Fixed Fire Extinguishing System in garage
- CO2 Fire Extinguishing System
- 18 x Powder Fire Extinguisher

##### **Security:**

- CCTV system
- CCTV cameras
- Ships safe

- Intruder alarms

#### **REFIT LOG**

2021/22

New Zero Speed stabilizer cmc

W3 MTU engines

Revarnish saloon floor and master cabin floor

Generated On 5/9/2025 1:55 AM by WORLD YACHT GROUP SVC Account

**WORLD YACHT GROUP USA**

**WORLD YACHT GROUP SVC**

**PAB**

**Account**

**info160920210306@world-yacht-  
group.com  
worldyachtgroup.com**

Page 4 of 11

Second upgrade domotic (creston-apple)  
 New raizer stb engine  
 New gaskets exhaust port & stb engines  
 2020  
 Full external paint job  
 New larger aft swimming platform  
 New bimini fy and aft sundeck  
 All new couscins exteriors sofa  
 2019  
 New raizer port engines  
 Total revision haaman system  
 New underwater lights + name's lights  
 2018  
 New bimini forward deck  
 Complete teak deck caulking  
 New grill and icemaker on the fy  
 New hatch ceiling main cabin  
 New lower part exhaust engines  
 First domotic upgrade

### **MAJOR ENGINE WORKS 2022**

Major engines works 2022

Overhaul air cooler  
 Overhaul heat exchangers  
 Overhaul sea water pumps  
 Overhaul injectionpumps with calibration  
 Overhaul circulation water pumps  
 Overhaul injectors with calibration, new spray nozzles , all new orings  
 Overhaul oil exchanger inverters with new gaskets  
 Valves adjustment with new gaskets  
 Cleaning system exhaust gas collector manifold  
 Replace antifreezer water  
 Replace engines oil, filters oil, filters fuel, air filters  
 Replace inverters oil

main



profile



Generated On 5/9/2025 1:55 AM by WORLD YACHT GROUP SVC Account

**WORLD YACHT GROUP USA**

**WORLD YACHT GROUP SVC**

**PAB**

**Account**

**info160920210306@world-yacht-  
group.com**

**worldyachtgroup.com**

Page 6 of 11



table



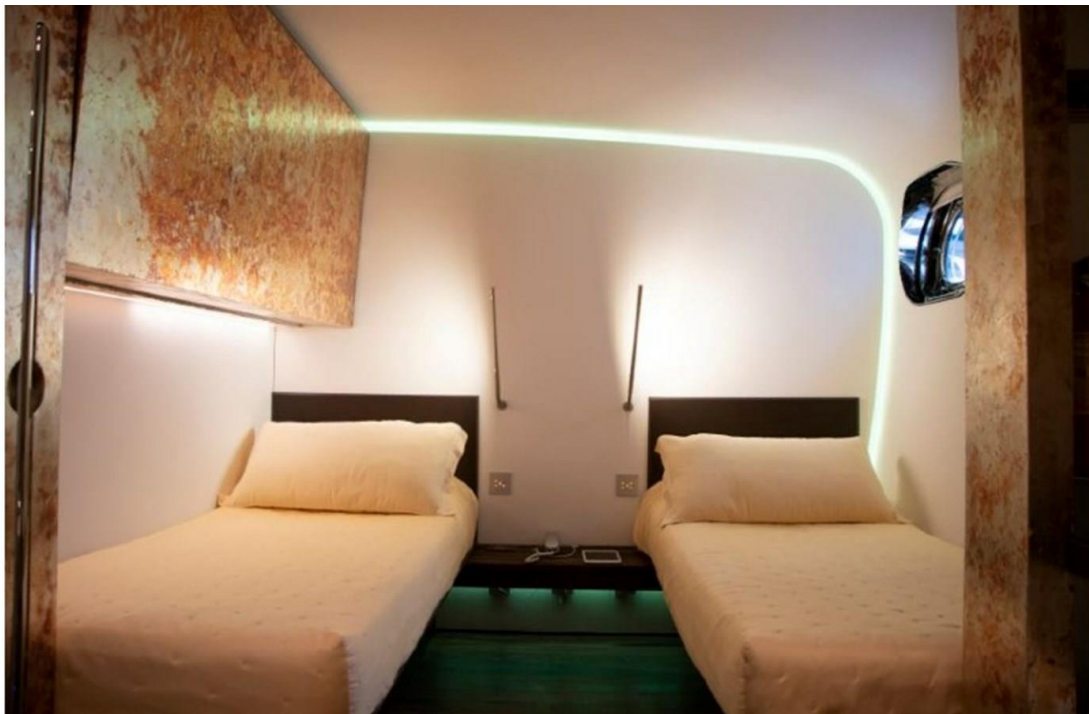
saloon



**Saloon**



**Twin cabin**





main cabin



vip cabin



**vip Cabin**



**engine room**

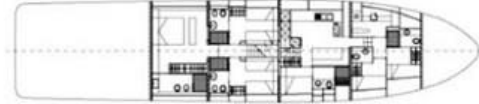


## LAYOUT MY PAB

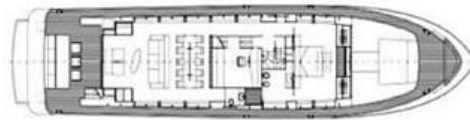
### LAYOUT M/Y PAB – 31.9m

Cantieri Navali di Lavagna

#### LOWER DECK:



#### MAIN DECK:



#### FLYING BRIDGE:

