



world yacht group

Experts in luxury yachts

SNACK MONEY



LOA: 72' (21.95m)

Tonnage: 0.00

Speed:

Location: Fort Lauderdale, Florida
United States

VAT Paid:

Delivery/Model 2023

Year:

Builder: BLUEGAME

Type: Motor Yacht

Staterooms: 3

Engines: 2x, Volvo Penta, D13 - IPS
1350, 1000 HP

Price: \$4,699,000 USD

Generated On 5/9/2025 2:08 AM by WORLD YACHT GROUP SVC Account

WORLD YACHT GROUP USA

WORLD YACHT GROUP SVC

SNACK MONEY

Account

**info160920210306@world-yacht-
group.com**

worldyachtgroup.com

Page 1 of 16

Additional Specifications For SNACK MONEY:

LOA:	72' (21.95m)	Delivery/Model	2023
Hull Material:	Fiberglass	Year:	
Range At Cruise Speed:		Year Built:	2023
Range At Max Speed:		Builder:	BLUEGAME
Location:	Fort Lauderdale, Florida United States	Type:	Motor Yacht
Price:	\$4,699,000 USD	Engines:	1000 HP,Twin, Volvo Penta, D13 - IPS 1350, 178hrs / 205hrs
		Staterooms:	3
		Captain Cabin:	No
		Classifications:	
		MCA: ISM:	

Highlights

- 200 hours
- Seakeeper 16 gyro stabilizer
- Removable "Trillion Series" fighting chair by Release Marine
- 2 Seabobs
- Diving equipment (air compressor, removable tank rack, etc.)
- Hookah tankless diving system
- Hardtop with electric blades opening roof
- Upgraded stereo system
- Dockmate remote control system
- Extended Gold Warranty for Seakeeper
- Ultra Sonic Antifouling System
- Seahub vessel maintenance program
- Underwater lights
- Inflatable fenders by Fendertex

Interior Complements

- Premium Italian furniture by Living Divani and Poliform
- Flatwoven rug by Perennials
- Folding table with electric up/down movement in LD salon
- Up/Down TV in LD salon
- Anti-roll edge in galley counters
- Miele appliances in the galley
- Microwave/Oven combo
- Miele washer/drier combo
- Insinkerator sink/food waste disposal
- Extra fridge + Icemaker in the pilothouse
- Fridge in master cabin
- Sliding beds in guest cabins
- TV in master and guest cabins
- Extractor fans in all bathrooms

Exterior Complements

- Upgraded exterior décor with Italian custom made elements
- Bow table with electrical up/down movement and lounge cushion
- Custom bow coolers with racks
- Ceiling TV with up/down movement in the cockpit
- Wetbar with grill, teppanyaki, fridge and icemaker
- Bow sunlounge bimini top with carbon poles
- Stern sunlounge bimini top with carbon poles
- Beach area bimini top with carbon poles
- Canvas strataglass closing for the entire cockpit
- Carbon fiber shower on beach area
- 1,100 lb. lifting crane on starboard side gunnel
- Rod holders on port side gunnel
- Removable carbon side-boarding ladder
- MarQuipt side boarding gangway
- Raw water washdown system in the beach area
- Foldable mast

NAVIGATION ELECTRONICS

- 3 Volvo 16" glass cockpit displays by Garmin
- Autopilot by Garmin
- VHF with US channels by Garmin
- Open array HD 4kW radar by Garmin
- FLIR night vision camera
- DPS for Volvo Penta IPS
- Sirius XM Platinum / Weather
- AIS

ELECTRICAL SYSTEM

- 24kW generator (60 Hz / Tier III) by Kohler
- Glendenning Cablemaster
- Fail-safe Galvanic Isolator for dry dock
- Double gang 110V 60Hz USA/EU sockets
- Lithium battery pack for hotel services with no generator

Satellite and Communication Systems

- Starlink communication system
- Direct TV

Alarms and Security

- Tocaro Blue security system
- Remote cellular warning
- CCTV system with 3 fixed cameras (2 in the engine room + 1 in the cockpit)

AIR CONDITIONING SYSTEM

- 96,000 BTU tropicalized air conditioning system
- ClearLine system by Electrosea

Engine Room Equipment

- Searecovery 900 watermaker
- Ice chipper
- Air compressor for diving tanks
- Ball valve thru-hull fittings (engine cooling exhausts remain as gate valves)
- Installation of FM200 fire system equipment (USCG approved)

Additional Upgrades and Accessories

- Prop speed on pods, propeller and hydraulic swim platform mechanism
- Ditec Hull, Glass, & Teak Coating
- Spare set of Volvo Penta Q2 propellers
- Window tinting
- Hubbell Smart Y adapter
- Canvas covers for sunpad/louvers
- Tow Bridle

27_DJI_0052 DEF 1 e mezzo



06_BMF5750 Beach area



07_BMF6211 Beach area



08_BMF6125 Cockpit lounge



09_BMF6215 Cockpit lounge



10_BMF5797 Wetbar



11_BMF6083 Bow lounge



Generated On 5/9/2025 2:08 AM by WORLD YACHT GROUP SVC Account

WORLD YACHT GROUP USA

WORLD YACHT GROUP SVC

SNACK MONEY

Account
info160920210306@world-yacht-
group.com
worldyachtgroup.com

Page 9 of 16

13_BMF6097 Bow lounge



14_BMF6110 Hard top



10_BMF5797 Wetbar



11.1_BMF6118 Pilot house



16_BMF6189 Main saloon



17_BMF5659 Main saloon



Generated On 5/9/2025 2:08 AM by WORLD YACHT GROUP SVC Account

WORLD YACHT GROUP USA

WORLD YACHT GROUP SVC

SNACK MONEY

Account

**info160920210306@world-yacht-
group.com**

worldyachtgroup.com

Page 12 of 16

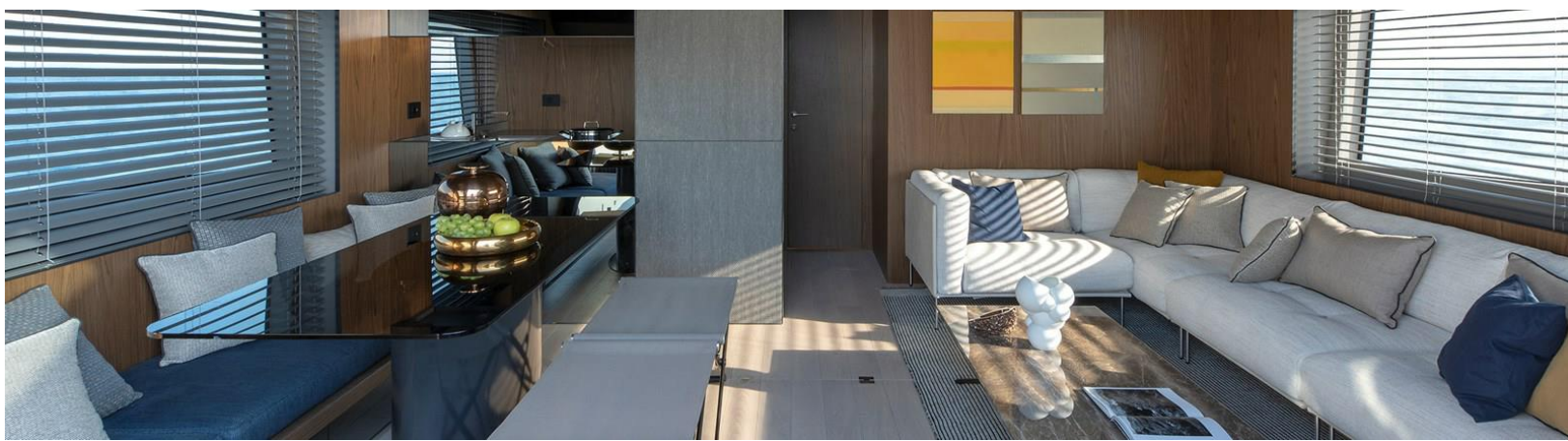
18_BMF6229 Detail main saloon



19_BMF6236 Main saloon



20_BMF6176 Main saloon



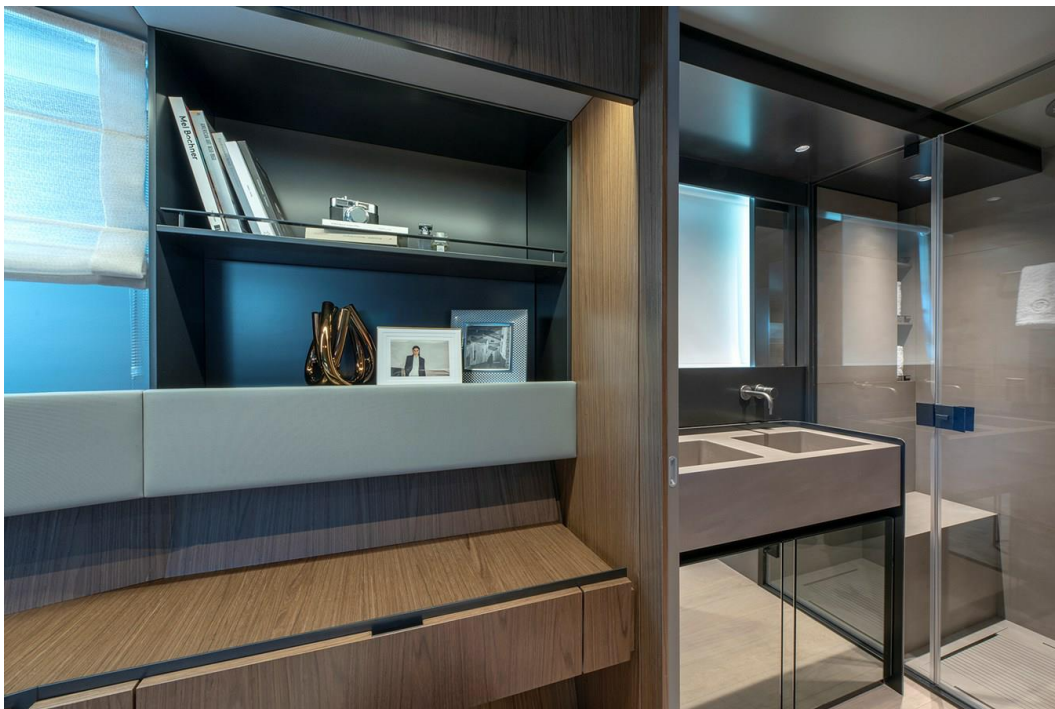
21_BMF6231 Galley



22_BMF5638 Owners cabin



23_BMF5636 Toilette



24_BMF564 Toilette



25_BMF5628 Guest cabin

