



OVERVIEW



TYPE	Motor	DESIGNER	N/A
LENGTH	60' (18.29m)	SPEED	33 Knots
BEAM	16' 9" (5.11m)	ENGINES	2x, Volvo, Volvo Penta IPS-1200, 1200 HP
DRAFT	5' (1.52m)	RANGE	
BUILDER	SUNSEEKER	FLAG	N/A
HULL MATERIAL	Fiberglass	TAXES PAID	No Duty Paid

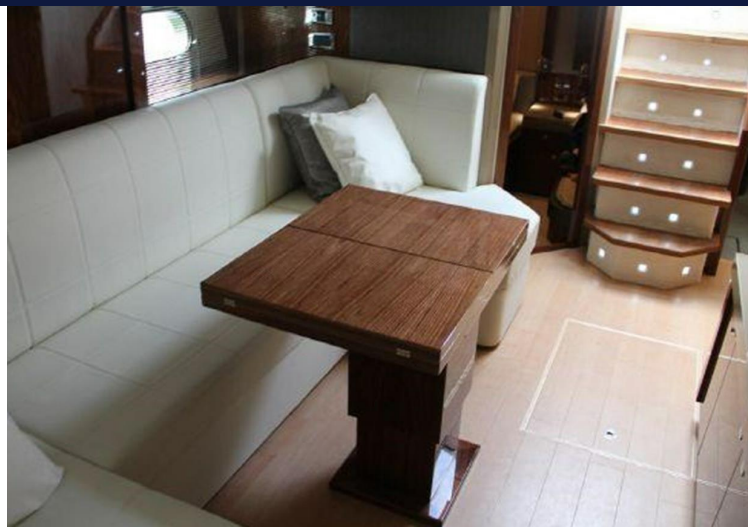
ASKING PRICE \$1,449,000 USD

TJB SUPER YACHTS LTD SVC ACCOUNT M: T: E: INFO120120220343@TJB-SUPER-YACHTS-LTD.COM











DETAILED SPECIFICATIONS



MAIN CHARACTERISTICS

TYPE	MOTOR
COUNTRY OF REGISTRY	N/A
PORT OF REGISTRY BUILT	2012
REFIT	N/A
BUILDER	SUNSEEKER
NAVAL ARCHITECH	N/A
EXTERIOR DESIGNER	N/A
INTERIOR DESIGNER	N/A
LWL	N/A
BEAM	16' 9" (5.11M)
MAX DRAFT	5' (1.52M)
CONSTRUCTION	N/A
HELIDECKS/HANGER	N/A

Salon

- Black American Walnut Interior with Gloss Finish
- Venetian Window Blinds
- Scatter Cushions
- Chrome Fittings
- Tropical Spec Air Conditioning
- Upgraded Teak Cabin Stair Treads from Cockpit to Lower Decks
- Bose Lifestyle 48 DVD/CD Surround System
- Upgraded Bulkhead Panels
- Upgraded Amtico Flooring
- White Leather Seating w/ custom stitch detail
- Upgraded upholstered strips on either side of TV
- Upgraded square stairlights
- Upgraded Ceiling
- Panel above Dining Table
- Upgraded Salon Table with Folding Leaves
- Telephone and cable TV input socket fitted with outlet for telephone
- Stowage beneath seats
- Flatscreen TV
- Cupboards
- Overhead halogen lighting 24v
- Double AC socket

Galley

- Black America Walnut Interior with Gloss finish
- Venetian Window Blinds
- Stainless steel backsplash
- Chrome Fittings
- Tropical Spec Air Conditioning
- Miele Washer and Dryer
- Refrigerator with Isotherm Drawer Freezer
- Upgraded Pull handles for fridge and dishwasher
- Upgraded Worktop
- Amtico Flooring Upgrade
- Stainless Steel Window Band
- Sink and Drainer
- 3 ring Ceramic hob
- Microwave
- Hot and Cold water
- Rubbish Bin
- Cupboard and drawer storage
- 6 place dinnerware and flatware sets
- Double AC socket
- Hand-held fire extinguisher
- First Aid Kit

Aft Master Cabin

- Black American Walnut Interior with Gloss Finish
- Venetian Window Blinds for 2 windows
- Chrome Fittings
- Safe - 2 brick with Digital Lock
- Upgraded White Leather Material
- Scatter Cushions
- Custom Headboard
- Fitted Carpet
- Double berth
- Cupboard and drawer storage
- 2 x reading lights 24v
- Outboard shelving
- Bedside drawers
- Wardrobe with Automatic lights
- Sette
- Dressing table and stool
- Halogen overhead lights 24v
- Double AC socket
- Door to Shower Room
- Flatscreen TV
- DVD Player

Master Head

- Black American Walnut Interior with Gloss Finish
- Venetian Window Blinds
- Mirrored Top Locker Doors
- Upgraded Sink Taps
- Chrome Fittings
- Upgraded Door Handles
- Upgraded Vanity Top
- Marble backsplash
- Upgraded Flooring
- Wash basin
- Hot and Cold Water
- Separate Shower compartment
- Electric toilet
- Extractor Fan
- Shelved cupboard
- Toothbrush and glass holder
- Towel ring and towels
- Overhead Light
- Opening porthole with screen
- Razor socket
- Soap dispenser

Forward VIP Stateroom

- Black American Walnut Interior with gloss finish
- Venetian Blinds
- Scatter Cushions
- Chrome Fittings
- Fitted Carpet
- Custom Bulkhead Panels
- Custom Headboard
- Double berth
- Storage beneath
- Drawer in base-end
- 2 x reading lights 24v
- Outboard shelving
- Overhead bedside cupboards
- Hanging wardrobe with mirrored panel
- Automatic wardrobe lights
- Halogen overhead lights 24v
- 2 opening portholes with screen
- Deck hatch with screen
- Double AC socket
- Door to Shower room
- Flatscreen TV
- DVD Player

Forward VIP Head

- Black American Walnut Interior with Walnut Finish
- Chrome Fittings
- Upgraded Vanity Top and backsplash
- Upgraded Flooring
- Upgraded Sink and Sink Tap
- Hot and Cold Water
- Separate Shower Compartment
- Electric Toilet
- Extractor Fan
- Custom mirror
- Shelved cupboard
- Toothbrush and glass holder
- Towel ring and Towels
- Overhead Light
- Opening Porthole with screen
- Razor Socket
- Soap dispenser

Starboard Guest Cabin

- Black American Walnut Interior with Walnut Finish
- Fitted Carpet
- Venetian Blinds
- Scatter Cushions
- Chrome Fittings
- Custom Wardrobe door
- Automatic wardrobe lights
- 2 x single berths
- Under berth storage
- 2 x reading lights 24v
- Hanging Wardrobe
- Halogen overhead lighting 24v
- Opening porthole w/ screen
- AC socket
- Flatscreen TV
- DVD Player

Cockpit

- Upgraded Black Cockpit Seating with Contrast Red Stitching
- Teak Decking Upgrade
- Scatter Cushions
- Furuno Navnet 3D 12" Colour multifunctional Radar/plotter with 4ft 6kW open scanner and GPS antenna GP320B
- Graphite Console
- Bow Sunbathing Cushions with Adjustable Backrests
- Underside of Aft and Bow Sunpad cushions made with webbing
- Alpine Cockpit speaker system upgrade
- Black Electric CA canopy cover for aft cockpit
- iPod Hookup
- Cockpit LED overhead Lights in Red
- Upgraded Helm Seats with Contrast stitching
- Carbon Fiber Wetbar worktop with running hot and cold water
- Red Side Deck Lights
- Upgrade: Teak Cabin Stair Treads from Cockpit to Lower decks
- Switches in Matt Grey
- Self draining
- Stern safety door
- Top loading ice chest
- Folding Teak Cockpit table
- Lockers beneath seating
- Aft Sunbather
- Garage with Hydraulic opening door
- Glass Holders
- Waterproof Carpet
- Engine Room Access Hatch
- Boat Hook

Helm Console

- Carbon Fiber Dash Panels
- Furuno Navnet 3D 12" Color multifunctional Radar/plotter with 4ft 6kW open scanner and GPS antenna GP320B
- Furuno Navpilot 711 Autopilot system
- Furuno Navnet 3D 12" Additional Color multifunctional display
- Volvo Penta DPS Dynamic positioning system including 7" colour display, GPS transponder, engine software upgrade and the Joystick plus with low speed function.
- Upgraded Double Helm Seats with Contrast stitching
- Chart Area
- Hydraulic Power Steering
- Leather rimmed steering wheel
- Open radar scanner
- Electric Speed Log
- Depth Sounder
- Rudder Indicator
- Water Tank Gauge
- Fuel Tank Gauge
- VHF Radio
- Trim Tab Controls
- Compass
- Waterproof plug and socket
- Horn
- Windscreen and washers
- Glassholders
- Hand-held fire extinguishers

Swim Platform

- Teak Laid Swim Platform and Steps
- Hot and Cold Swimming Shower
- Fresh Water Marina Connection
- Dockside AC Shorepower connection
- Stainless Steel Swimming Ladder

Deck and Exterior

- Low Level LED Lights "Red and White" Changeable"
- Black Antifouling
- Tender Recovery System
- Hydraulic Lifting Platform
- Stainless Steel Bow Flag Staff
- Underwater Lights x 8
- Switch and Breaker for Electric Sign Writing on Garage Door
- Stainless Steel Fittings
- 8 x stainless steel deck cleats
- Pulpit and Cockpit Rails
- Stainless Steel Fendering
- Curved Safety Glass Windscreen
- Stainless Steel Bow Roller with Anchor Stop
- Stainless Steel bow plate
- Delta Anchor and 60m Galvanized chain
- Electric winch and capstan with deck and cockpit controls
- Chain locker- Fender Stowage
- Fender tie bar under anchor locker lid
- Fuel fillers port and starboard
- Fresh water filler
- IMCO Navigation Lights
- 2 x Pantograph windscreen wipers and washers
- Garage for Tender
- Ensign staff and socket

Molding

- Special Hull Color: Deep Gray
- Deep Gray Deck Color
- Deep Gray Hull Band
- Graphite Helm Console and Navigator Console
- Hardtop in Deep Gray
- Black Antifouling

Engine compartment and ancillaries

- Hydraulic Lifting Platform
- Upgraded Kohler 20kw 60Hz Generator
- BUILT TO US COAST GUARD REGULATIONS & SPECIFICATIONS
- Soundproofing throughout
- Fuel Filters/water separator to engines and generators
- FM200 manuel/auto fire ext. system
- Automatic bilge and flood pumps with high level alarms
- Air Extractor Fans - 24V
- Generator Exhaust silencers and water separators
- Engine Exhaust dry risers and water injection
- Strainers to all raw water inlets

Systems

- Electric Toilet system - 24v
- Aluminum Fresh water tank
- GRP Fuel Tank
- Fresh water Pressure System
- Hot water tank
- Gray-water sump box and discharge pump - 24V
- Bilge Pump System
- FM200 Manuel/auto fire ext. System
- Auxiliary Hydraulics - 24V
- Hydraulic Power Steering

Underwater Gear

- Direct drive shaft through tunnels
- NAB 5 Blade Propellers
- Bronze (AB2) - P-Brackets
- Stainless steel - Temet 25 - Propeller Shafts
- Self Aligning shaft seal c/w spare seal
- High Performance bronze rudder and struts
- Valves to all underwater skin fittings
- Sea Water Strainers to engines and generators
- Full Cathodic bonding system to zinc anodes
- Stainless Steel Trim Tabs

Electrical System

- Upgraded Kohler Generator with underwater silent exhaust and sound shield
- AC dockside connection
- Galvanic Isolater
- 24v and 12v DC electrical system with full circuit breaker protection
- 6 x engine batteries 24v circuit
- 4 x domestic batteries 24v circuit
- 2 x generator batteries 12v circuit
- Alternator split charging system
- Remote battery switches controlled from locker in cockpit
- Battery charger for 24v circuits
- Battery charger for 12v circuits
- Water Heater
- AC sockets throughout the boat
- 24v hand light and cable

Miscellaneous

- Sunbrella Plus Jet Black Instrument Cover
- Sunbrella Plus Windscreen Cover
- Sunbrella Plus Rear camper with Windows
- Tool kit
- Boat Hook
- 4 x Mooring Ropes
- 6 x Fenders

Disclaimer

The company offers the details of this vessel in good faith but cannot guarantee or warrant the accuracy of this information nor warrant the condition of the vessel. A buyer should instruct their agents, or their surveyors, to investigate such details as the buyer desires validated. This vessel is offered subject to prior sale, price change, withdrawal without notice, and tax when applicable.



Young Guns



Young Guns

+44 (0) 207 183 4393 • ENQUIRIES@TJBSUPERYACHTS.COM

24.11 CODA STUDIOS, 189 MUNSTER ROAD, FULHAM, LONDON, SW6 6AW, UK