



ROYAL YACHTS

MAXIMUS



LOA:	525' (160m)	Delivery/Model Year:	2028
Beam:	72' 3" (22m)	Model:	IPI160
Tonnage:	13,500.00	Builder:	CUSTOM
Speed:	12 Knots 19 Knots	Type:	Motor Yacht Displacement
Flag:	Cayman Islands	Staterooms:	24
Location:	Vigo, Galicia Spain	Fuel Cap:	1000000 L (264172.05 Gal)
VAT Paid:		Water Cap:	100000 L (26417.21 Gal)
		Engines:	2x, ABB, 8200 HP
		Price:	(\$430,411,495 USD est.) €405,000,000 EUR

Generated On 4/24/2024 9:12 PM by Royal Yachts SVC Account

Royal Yachts

Royal Yachts SVC Account
info110220220300@royal-
yachts.com
www.ry.ae

MAXIMUS

Page 1 of 14

Additional Specifications For MAXIMUS:

LOA:	525' (160m)	Delivery/Model	2028
Beam:	72' 3" (22m)	Year:	
Min Draft:	17' 9" (5.4m)	Year Built:	2029
Hull Material:	Steel	Builder:	CUSTOM
Superstructure:	Aluminum	Model:	IPI160
Hull Config:	Displacement w/ Bulbous Bow	Type:	Motor Yacht Displacement
Deck Material:	Teak over Aluminum	Engines:	8200 HP, Twin, 2029, Inboard, Diesel/Electric, ABB,
Tonnage:	13,500.00		
Range At Cruise	12500	Staterooms:	24
Speed:		Sleeps:	48
Range At Max	7125	Heads:	30
Speed:		Captain Cabin:	Yes
Speed:	Cruising 12 Knots	Classifications:	Lloyd's Lloyds +100A1 SSC, Yacht (P), Mono, G6 Ice Class 1A LMC, UMS, DP (CM) – (Except during navigation in Ice)
	Max 19 Knots		
Ext Designer:	Gill Schmid Design	MCA: Yes	ISM: Yes
Fuel Capacity:	1000000 L (264172.05 Gal)		
Water Capacity:	100000 L (26417.21 Gal)		
Holding Tank:	85000 L (22454.62 Gal)		
Flag:	Cayman Islands		
Location:	Vigo, Galicia Spain		
Price:	(\$430,411,495 USD est.) €405,000,000 EUR		

Features

eed/ cruise speed: 20 knots/ 16 knots

- Hull type: twin screw full displacement motor yacht
- Exterior & interior design: impossible productions ink LLC
- Hull material: steel
- Superstructure material: aluminum alloy
- 2 helicopter landings with 1 helicopter hangar
- Grand double height entrance lobby with full height aquarium
- 2 expansive tender garages
- Casino and bar space
- Double height nightclub with glass bottomed pool and opening hull balconies
- Full height pool in spa area with opening hull balconies
- Expansive gym and sauna space with opening hull balconies
- 3D cinema space
- Outdoor swimming pool
- 2 outdoor Jacuzzis that extend out past the hull and over open water
- Mid ship access to water via stairs in hull
- Smoking cocktail lounge
- 2 beach club spaces both facing aft
- 3 show kitchens on tank deck, guest deck and bridge deck
- Expansive humidor and showcase wine vault
- Formal dining to cater 30+ guests
- 3 separate meeting room spaces
- Bow jacuzzi and lounging
- 270 degree observation lounge at bow

1. DIMENSIONS

LOA 160,0 m

Beam 22,0 M

Draught 5,4 m

GRT 13,500

2. General Information

Subject to final specifications and contract

DELIVERY Approximately 48 months from contract

BUILDER Shipyard of choice Northern Spanish Shipyard
recommended for Spanish Tax Lease Reduction Scheme that provides up to 20%
reduction of overall build costs.

NAVAL ARCHITECT Gill Schmid Design
EXTERIOR DESIGNER Gill Schmid Design /TBD

INTERIOR DESIGNER Clients choice

CONSTRUCTION Steel hull and aluminium superstructure,
composite funnel, teak decks
Solidt decking on 2 x Helicopter decks and hangar

CLASSIFICATION Lloyds +100A1 SSC, Yacht (P), Mono, G6
Ice Class 1A LMC, UMS, DP (CM) – (Except during navigation in Ice)

3. Machinery

Subject to final specifications and contract

Diesel Electric Propulsion
MAIN PROPULSION 2 x ABB Industry AG E-motors,
3300V, 2x626A, 3-phase, 6100kW
SPEEDS Maximum speed 19 knots
Cruising speed 18 knots
Economical speed 12.5 knots
RANGE Approximate ranges:
9.5 knots (2 DG's – 16CBM/24H) 14250 NM
12.5 knots (3 DG's – 24CBM/24H) 12500 NM
19.0 knots (8DG's – 64 CBM/24H) 7125 NM
BOW THRUSTERS 2 x Schottel transverse thruster units
E-motors; 2 x ABB 350kW
2 x Zhenjiang Propellers, 3 blade, 1240 OD
STERN THRUSTER 1 x Schottel rudder propeller unit
E-motor; 1 x ABB 450kW
1 x Fundiluz propeller, 3 blade, 1350 OD
GENERATORS 8 x ABB AMG 500L4L, prime mover MTU diesel
engine.
Output 2300kVA, Rated voltage 3300, Power
factor 0.8, Rated current 402A, Rated speed
1800 rpm, Frequency 60 Hz. Efficiency at 100%
rated power 96%
SHAFTS & PROPELLERS 2 x VATECH twin pitch propeller, max
engine power for summer operation;
5855 kW (high pitch), max engine
power for winter operation 4250 kW
(low pitch, pitch reduction -3.5 deg).
Propeller OD 3050 mm
Classification, LRS + 100 A1 SCC
Yacht, Ice class 1A

Generated On 4/24/2024 9:12 PM by Royal Yachts SVC Account

5 blades

STABILIZER 1 x set of SKF Type Z, Z600-595-13, S-mode/Smode operational.

Main HPU power 90kW x 2 per fin

Gyro; Simplex-Compact Solid state, type; H45

G15

SIMATIC S7-300 controller

STEERING GEAR 2 x Becker

AUXILIARY MACHINERY & ELECTRICAL SYSTEM

EMERGENCY 1 x MTU 12VTA , 382kw at 1800 rpm

GENERATOR Alternator AVK 416 kVA at 1800 rpm. 400v AC/

50 Hz/3-phase

HV TRANSFORMER 2 x ABB RESIBLOC, Nominal power: 4600kVA,

Primary Voltage/current; 3300V/850A,

Secondary voltage/current; 450V/5902A

LV TRANSFORMER 2 x J. Schneider Electrotechnik GmbH. Power

rating: 560kVA, Frequency: 60Hz, output

voltage: 3 x 208V, output current: 1555A

LV VOLTAGE ELECTRICITY

440v AC, 3-phase, 60 Hz

230V AC, 110V ACs single phase, 60 Hz

(lighting, domestic equipment, control circuits

and nautical equipment) 24V DC

The installation will be a 3-phase, four wire

system, neutral earthed, 400v/230v AC, 50 Hz

SHORE POWER LV 440V AC, 3-phase breaker, 1500A min required

EUROPEAN CONVERTER Borri, Output power; 5 kVA, 1 x 230V

single phase, 50 Hz

4. Capacities

Subject to final specifications and contract

TANK CAPACITIES (approximate)

FUEL 1,000,000 liters/ 264,000 US gallons

TECHNICAL WATER 85,000 liters/ 22,500 US gallons

WATER 100,000 liters/ 26,500 US gallons

5. Navigation Equipment

Subject to final specifications and contract

The navigational bridge is based upon the K-Bridge Kongsberg system which consists of four independent ECDIS units and one conning station. All of the ECDIS units are Multi-Functional Displays and so can be used for planning as well as navigation and monitoring. Interchangeable from ECDIS to RADAR; they form part of the integrated bridge system that synergizes all of the navigational aids to assist in safe navigation. Incorporated in this is an auto pilot, Follow Up and Non follow up steering methods and the K-Pos Kongsberg Dynamic Positioning system.

MAGNETIC COMPASS Sperry Marine 2060 Independent magnetic compass

GYRO COMPASS NAVIGAT 200 Multi Mechanical Gyro

FIBER OPTIC COMPASS NAVIGAT 3000 Fiber Optic Gyrocompass

DYNAMIC POSITIONING Kongsberg K-Pos system with three independent stations

AUTOMATIC PILOT Integrated Navigation System type

Kongsberg K-Bridge features:

Fully integrated radar and ECDIS operation

Consistent radar, chart and conning displays

Interactive on-screen operation

Versatile voyage planning capabilities and

Autopilot with track control, operated from the

Multifunctional Display

LOG Naviknot 400 Doppler Speed Log

ECHO SOUNDER Sperry Marine ES 5100

RADAR 3 x ARPA radars (1 x S-band and 2 x X-band)

NAV. DISPLAY 4 x Multi- Functional Display Units / ECDIS K-Bridge

GPS 2 x DGPS SAAB R5 Supreme, 1 x FUGRO GPS

AIS Kongsberg AIS 300, Integrated into K-Bridge

NAVTEX Furuno Navtex NX-700

6. Deck Equipment

Subject to final specifications and contract

ANCHOR WINDLASS 2 x type 23, size 24 Steen stainless steel
vertical anchor
windlasses each with vertical warping
capstans
AFT WARPING CAPSTANS 2 x electrically driven Steen capstans
2 x on the aft deck 3, 1x one PS, and 1 x
on SB
AFT ANCHOR 1 x Electric yacht anchor winch type 01
size 16 with 6 x 27.5m chain
FORWARD ANCHORS 2 x POOL N fully balanced stockless High
Holding Power anchor
3200Kg each with 9 x 27,5m chain each side
BOAT CRANE & DAVITS Davit International hydraulic lifeboat system
Two sets Lifeboat Handling System Type DTT.
SP.95 Davits with winch 12.18.33 SWL per
arm 48.0 KN
Davit International Raft Handling system
Two Type D-RC.21/3,65/QR Davits with winch
04.08.10 SWL 21.0 KN
2 x Cramm Hydraulic davit cranes located on
deck 4 forward for Jet ski launch and stores.
Each rated to 1 ton SWL
Marina Gantry crane rated to 40 tons SWL
2 x Aljo Helideck stores cranes retractable
flush into superstructure. Each rated to 3 ton
SWL
PASSERELLE 2 x Cramm telescopic slewing ladders,
hydraulic operated port and starboard
SIDE BOARDING LADDERS 2 x boarding side ladders
SEARCHLIGHT 2 x searchlights on main mast, Xenon type
ACR- RCL600A
AWNING Removable awning on owner's deck 7
forward

7. Accommodation

Full Owners Deck

Full VIP Deck

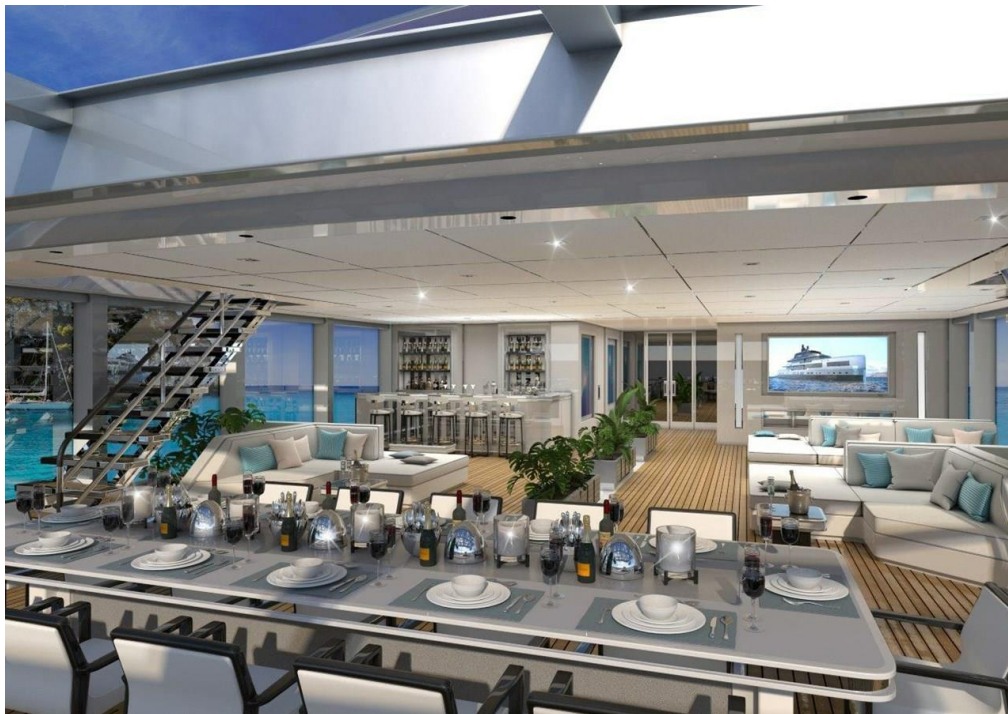
(9) double guest suites

(64) crew

MAXIMUS with Helicopter



MAXIMUS_alfresco dining



Generated On 4/24/2024 9:12 PM by Royal Yachts SVC Account

Royal Yachts

Royal Yachts SVC Account
info110220220300@royal-
yachts.com
www.ry.ae

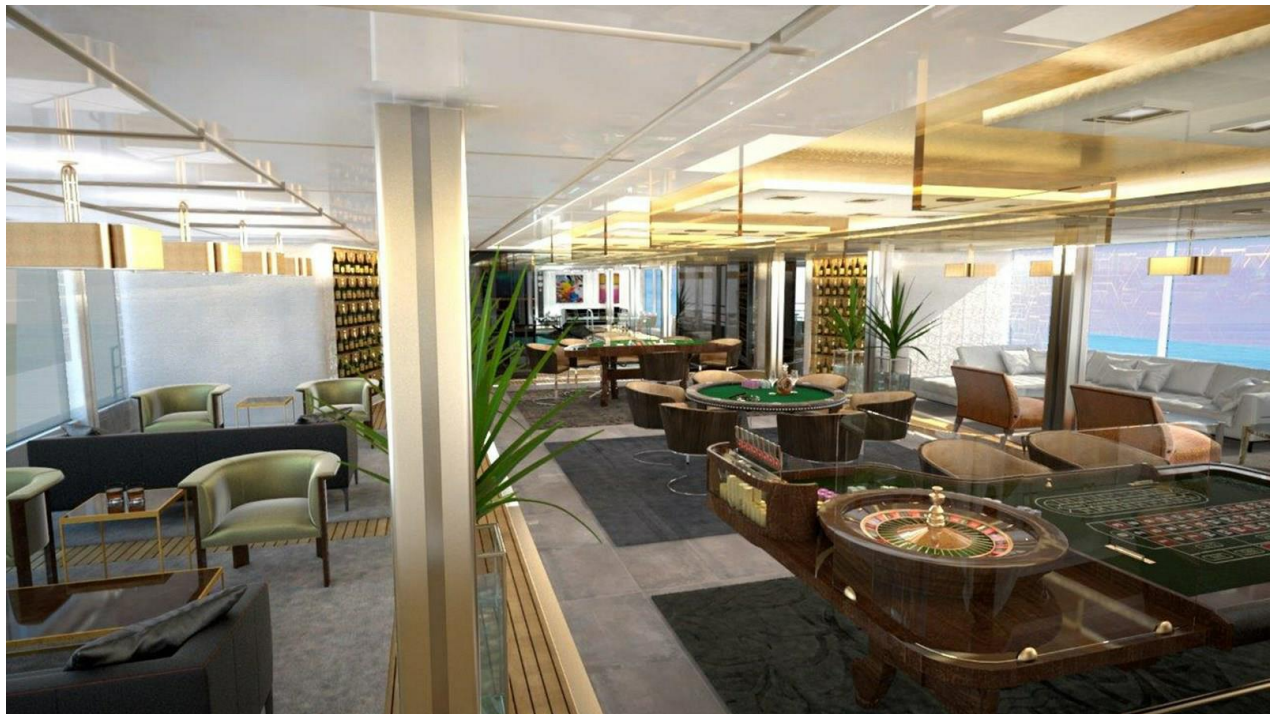
MAXIMUS

Page 8 of 14

MAXIMUS_beachclub



MAXIMUS_casino



MAXIMUS_cocktail lounge



MAXIMUS_guest lounge 01



MAXIMUS_guest lounge 02



MAXIMUS_guest



MAXIMUS_outdoor lounge 01



MAXIMUS_outdoor lounge 02



MAXIMUS_outdoor lounge 03



MAXIMUS_VIP



