



<b>Type</b>	<b>Motor Boat</b>	<b>Classification</b>	--
<b>Top</b>	--	<b>Class Type</b>	--
<b>Model</b>	<b>38 Custom</b>	<b>Builder</b>	<b>CUSTOM</b>
<b>Manuf. Year</b>	<b>1984</b>	<b>Naval Architect</b>	--
<b>Refit Year</b>	--	<b>Interior Design</b>	--
<b>LOA</b>	<b>42' (12.8m)</b>	<b>Hull</b>	<b>Fiberglass</b>
<b>Beam</b>	<b>12' (3.66m)</b>	<b>Deck</b>	--
<b>Draft Min/Max</b>	<b>-- / 2' 2" (0.66m)</b>	<b>Engines</b>	<b>2x, Merlin, Heavy Duty Chevy Big Block 540CI, 454 HP</b>
<b>GRT</b>	--	<b>Max Speed</b>	<b>50 Knots</b>
<b>Fuel</b>	<b>300 Gal</b>	<b>Cruise Speed</b>	<b>30 Knots</b>
<b>Water</b>	<b>50 Gal</b>	<b>Range</b>	--
<b>Flag</b>	--	<b>Accommodations</b>	<b>1 strms</b>

**ASKING PRICE: \$169,000 USD**











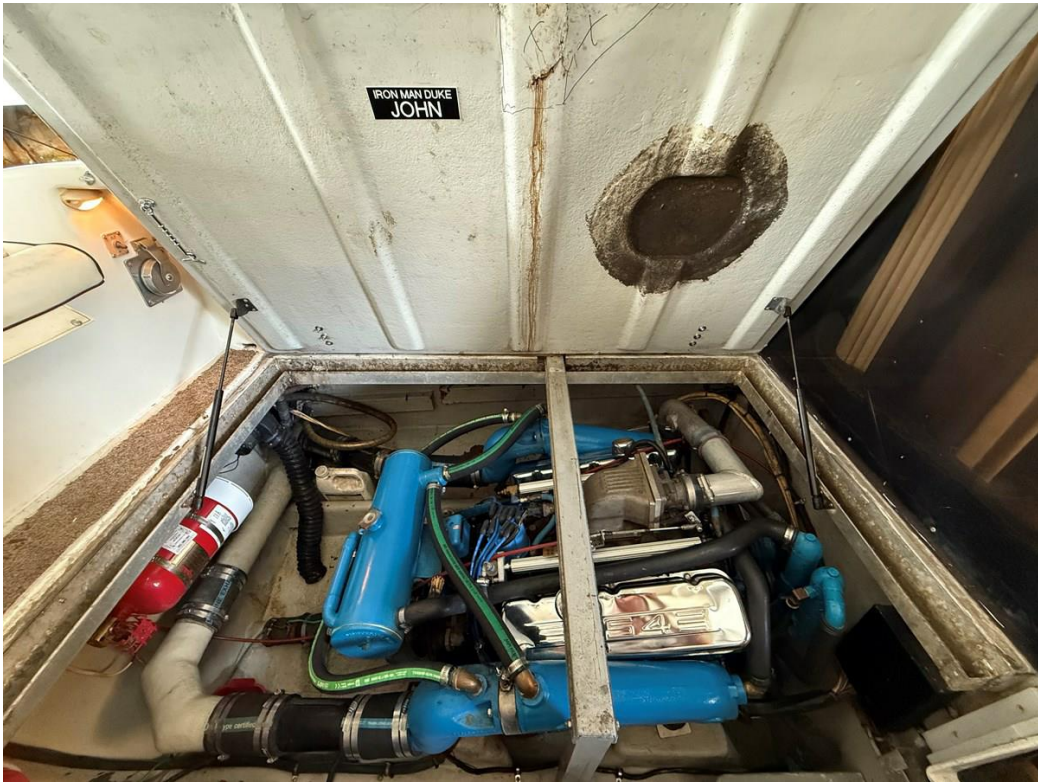




















## Disclaimer

The Company offers the details of this vessel in good faith but cannot guarantee or warrant the accuracy of this information nor warrant the condition of the vessel. A buyer should instruct his agents, or his surveyors, to investigate such details as the buyer desires validated. This vessel is offered subject to prior sale, price change, or withdrawal without notice.