



world yacht group

Experts in luxury yachts

JOHNSON 93 SKYLOUNGE



LOA:	93' 9" (28.58m)	Delivery/Model	2025
Beam:	23' 7" (7.19m)	Year:	
Max Draft:	6' 8" (2.03m)	Model:	RPH w/ON-DECK MASTER
Tonnage:	95.00	Builder:	JOHNSON
Speed:	19 Knots 22 Knots	Type:	Motor Yacht Sky Lounge
Location:	Kaohsiung, Kaohsiung Taiwan	Staterooms:	4
VAT Paid:	US Duty Paid	Fuel Cap:	3300 Gal
		Water Cap:	540 Gal
		Engines:	2x, CAT, C-32 ACERT, 1925 HP
		Price:	\$7,165,000 USD

Generated On 5/11/2025 5:04 AM by WORLD YACHT GROUP SVC Account

WORLD YACHT GROUP USA

WORLD YACHT GROUP SVC

JOHNSON 93 SKYLOUNGE

Account

**info160920210306@world-yacht-
group.com**

worldyachtgroup.com

Page 1 of 26

Additional Specifications For JOHNSON 93 SKYLounge:

LOA:	93' 9" (28.58m)	Delivery/Model	2025
Beam:	23' 7" (7.19m)	Year:	
Min Draft:	6' 6" (1.98m)	Year Built:	2025
Max Draft:	6' 8" (2.03m)	Builder:	JOHNSON
Hull Material:	Fiberglass	Model:	RPH w/ON-DECK MASTER
Hull Config:	Semi-Displacement	Type:	Motor Yacht Sky Lounge
Hull Designer:	Dixon Yacht Design	Top:	Enclosed
Deck Material:	Teak	Engines:	1925 HP,Twin, 2022, Inboard, Diesel, CAT, C-32 ACERT,
Tonnage:	95.00	Staterooms:	4
Range At Cruise		Sleeps:	8
Speed:		Heads:	5
Range At Max		Crew Quarters:	2
Speed:		Crew Berths:	3
	Cruising 19 Knots	Captain Cabin:	Yes
	Max 22 Knots	Classifications:	
Ext Designer:	Dixon Yacht Design	MCA:	ISM:
Fuel Capacity:	3300 Gal		
Water Capacity:	540 Gal		
Holding Tank:	200 Gal		
Location:	Kaohsiung, Kaohsiung Taiwan		
Price:	\$7,165,000 USD		
Tax Status:	US Duty Paid		

I. HULL & DECK

1. MAIN DECK-TEAK 14MM
2. HIGH BULWARK W/FLUSH MOUNTED LED DECK LIGHTS, TWO REAR BULWARK SIDE DOORS FOR BOARDING (ONE BOARDING GATE ON EACH SIDE)
3. STAINLESS STEEL INTEGRAL ROLLERS & CHAIN STOPPER FOR DUAL ANCHOR CHAIN
4. VERTICAL ELECTRIC ANCHOR WINCHES x 2 - MAXWELL VWC4000BB/HYD VERTICAL HYDRAULIC WINDLASS, DUAL DIRECTION, CHROMED, MATCHED PAIR, WITH CHAIN WHEEL 5437/016 (1/2"HT) AND PARTS:
2 x AA560 ROPE/CHAIN COUNTER/REMOTE CONTROL
(1 at PH and 1 at FB)
1 x BAND BRAKE
1 x CHAIN ROLLER STOPPER TENSIONER
1 x HAND HELD REMOTE CONTROL
5. AFT DECK MOORING CAPSTAN x 2 SETS - MAXWELL VC2500W/D VERTICAL ELECTRIC CAPSTAN, WIDE DRUM SINGLE DIRECTION, 24VDC, CHROMED, AND PARTS:
1 x FOOT SWITCH W/COVER
1 x 80 AMP BREAKER PANEL
1 x REVERSING SOLENOID PACKS, 24VDC
6. STAINLESS STEEL 250 LB ANCHOR x 2
7. HIGH TENSILE GALVANIZED ANCHOR CHAIN x 2
LEFT: 300 FEET (5/8")
RIGHT: 300 FEET (5/8")
8. FRESH WATER ANCHOR CHAIN WASH DOWN
9. HEAVY DUTY S/S 3" OVAL HANDRAIL WITH 1 1/2" STANCHIONS
10. S/S FLAGPOLE ON BOW RAIL
11. BOW STORAGE LOCKER FOR FENDERS AND ANCHOR CHAINS
12. HEAVY DUTY 316# STAINLESS STEEL TWIN CLEATS AND FAIRLEADS WITH ROLLERS
13. BLACK TEMPERED SAFETY GLASS (EXCEPT 5 WINDOWS IN FRONT OF PILOT HOUSE)
14. STAINLESS STEEL PNEUMATIC SALOON SLIDING DOOR WITH BUTTON AND SAFETY SENSOR DEVICE
15. TWO PANTOGRAPH SIDE DOORS (PORT SIDE & STARBOARD SIDE) IN DECK HOUSE
16. STAINLESS STEEL PORTHOLES ALL WITH BLACKOUT SHIELDS
17. BUILT-IN HOT & COLD WATER SHOWER – SWIM PLATFORM
SSI 48300000 STOWAWAY SHOWER UNIT WHITE x 1 SET

Generated On 5/11/2025 5:04 AM by WORLD YACHT GROUP SVC Account

WORLD YACHT GROUP USA

WORLD YACHT GROUP SVC

JOHNSON 93 SKYLounge

Account

**info160920210306@world-yacht-
group.com
worldyachtgroup.com**

Page 3 of 26

18. LARGE TEAK INLAY SWIM PLATFORM WITH STAIRWAYS TO AFT DECK
19. FRP "U" SHAPE SEATING ON AFT DECK WITH CUSHION AND COVERS
20. AFT DECK CUSTOM SLIDING HIGH-LOW TABLE WITH COMPASS INLAY x 2
21. FRP STORAGE CABINET ABOVE RUDDER IN THE LAZARETTE
22. ANTI-FOULING BOTTOM PAINT
SEA HAWK PRIMER SYSTEMS TUFF STUFF 1284 GREY OR 1285 WHITE
SEA HAWK SELF-POLISHING COPOLYMER ANTIFOULING CUKOTE 3445
BLACK OR 3430 DARK BLUE
23. SINGLE BOOT STRIPE COLOR: BLACK
24. S/S HANDRAILS ON AFT DECK STAIRS WITH TWO INTERMEDIATE RAILS
25. LED FLOOD LIGHT ON THE END OF AFT DECK CEILING x 2
26. EXTERIOR STEP LIGHTS - IMTRA KODIAK BLUE LED S/S 24V
27. RUB RAIL WITH S/S CAP ON LOWER AFT HULL SIDES
28. SOLID STAINLESS STEEL RUB RAIL AROUND HULL/DECK JOINT
29. ZINC ANODES ON TRANSOM, SHAFT AND BOW AND STERN THRUSTER
30. FRESH WATER WASH DOWN SPIGOTS ON THE BOW AND AFT DECK
- SCANDVIK 10187 S/S
31. AFT DECK REFRIGERATOR - U-LINE WH95TP-20 110V/60HZ
32. DECK WASHDOWN, SALT WATER
FLOJET 4325-343L WATER PUMP 24V w/NOZZLE x 1
33. HYDRAULIC SWIMMING PLATFORM (BESENZONI PL850 OR EQUIVALENT
W/ 1873 LBS. LIFTING CAPACITY
34. LADDER, SIDE RAILS + SUN PADS ON MASTER COACH ROOF
35. WATER FILL DECK FITTING x 1
36. DIESEL FILL DECK FITTING x 4

II. SKYLounge

1. TEAK FLOOR WITH 14 MM TEAK AND HOLLY WITH MATT FINISH
2. FRP RADAR ARACH, MAST, AND WINGS
3. TEAK TREAD STAIRWAY FROM AFT DECK TO FLYBRIDGE WITH HAND RAILS

Generated On 5/11/2025 5:04 AM by WORLD YACHT GROUP SVC Account

WORLD YACHT GROUP USA

WORLD YACHT GROUP SVC

JOHNSON 93 SKYLounge

Account

**info160920210306@world-yacht-
group.com
worldyachtgroup.com**

AND LED STEP LIGHTS

4. AIR HORN

BUELL S/S AIR HORN COMPRISING:
1 X 54443 24V TANK MOUNTED COMPRESSOR
1 X 1062 12" STROMBOS AIR HORN
1 X 1063 15" STROMBOS AIR HORN
1 X 1064 18" STROMBOS AIR HORN

5. CUSTOM WALK BEHIND WET BAR

REGRIGERATOR/ICEMAKER: ULINE LATEST MODEL 110V/60 HZ
MICROWAVE: GE LATEST MODEL
FAUCET: GROHE
SINK
3 x BAR STOOLS
GRANITE TOP

6. WOOD/ UPOLSTERED SETTEE + COFFEE TABLE

7. S/S FLAG STAFF ON REAR OF FLYBRIDGE

8. HELM SEAT

PORT SIDE: AIRTEX HELM SEAT X 2

9. HIGH QUALITY ARITEX S/S GAS BBQ

10. S/S HATCH ON F/B DECK STEP OPENING

11. OVERSIZE DRAINS W/STRAINERS AT EACH CORNER OF FLY BRIDGE DECK
WITH INTERNAL OVERBOARD DRAINS

12. CUSTOM LIFERAFT BRACKET ON THE OUTBOARD X 2 LIFERAFTS OWNER
SUPPLIED

13. SEARCH LIGHT, DUAL STATION ACR RCL100 24V

14. CHOICE OF (I) GARMIN OR (II) RAYMARINE NAVIGATION SYSTEM

I. GARMIN

GPSMAP® 8215 FULLYINTERGRATED MULTITOUCH MFD x 2
GMI 20 MARINE INSTRUMENT DISPLAY x 1
GMR™ 404 XHD OPEN ARRAY RADAR AND 4KW PEDESTAL x 1
GARMIN VHF 200 MARINE RADIO x 1
GARMIN AIS 600 CLASS B TRANSCEIVER x 1
GHP™ 20 MARINE AUTOPILOT SYSTEM WITH SMARTPUMP x 1
GARMIN GSD 24 MARINE NETWORK SOUNDER 2KW x 1

II. RAYMARINE

RAYMARINE A125 MULTIFUNCTIONAL DISPLAY WITH WIFI x 2
RAYMARINE I70 MULTIFUNCTION COLOR DISPLAY x 1
RAYMARINE 48" HD COLOR OPEN ARRAY AND 4KW PEDESTAL x 1
RAYMARINE RAY218E VHF RADIO x 1
RAYMARINE AIS 650 CLASS B TRANSCEIVER x 1
RAYMARINE EVOLUTION AUTOPILOT WITH P70R CONTROL HEAD & ACU400
ACTUATOR CONTROL UNIT x 1
RAYMARINE CP100 DOWNVISION FISHFINDER x 1

15. STABILIZER CONTROL AND MONITORING DISPLAY

Generated On 5/11/2025 5:04 AM by WORLD YACHT GROUP SVC Account

WORLD YACHT GROUP USA

WORLD YACHT GROUP SVC

JOHNSON 93 SKYLounge

Account

**info160920210306@world-yacht-
group.com
worldyachtgroup.com**

16. BOW & STERN THRUSTER CONTROL PANEL
17. CCTV SYSTEM WITH 8 CHANNEL NETWORK DVR, 5 CAMERAS WITH 2
IN THE ENGINE ROOM AND 2 ON AFT DECK, AND ONE ON
FOREDECK FACING WINCH
18. RUDDER INDICATOR
19. FUEL GAUGE HEADHUNTER TS3000 SERIES
20. DANFORTH 5" MAGNETIC COMPASS x 1
21. FUSION STEREO SYSTEM, FLYBRIDGE, AFT DECK
MSAV700I DVD / RECEIVER-WITH FUSION LINK
MSCL602 6" MARINE CEILING MOUNT SPEAKERS x 4
MSBT200 BLUETOOTH ADAPTER MODULE FOR SIRIUS PORT
22. POP UP TV CABINET W/ 32" LCD TV
23. APPLE TV
24. LOW LEVEL COURTESY LED LIGHTS 24V
25. INTERNATIONAL NAVIGATION LIGHTS & CONTROLLER ALL LED
AQUASIGNAL ONE SET (5)
3532003 #55 MASTHEAD LIGHT 24V
3535103 #55 STARBOARD LIGHT 24V
3534203 #55 PORT LIGHT 24V
3533703 #55 STERN LIGHT 24V
3531703 #55 ALLAROUND LIGHT 24V
26. BOSE LIFESTYLE 535 SERIES III HOME THEATER SYSTEM W/ SPEAKERS
27. PIONEER BDP160 BLURAY DISC PLAYER
28. PNEUMATIC STAINLESS STEEL SKYLounge SLIDING DOOR WITH BUTTON
AND SAFETY SENSOR
29. SIDE AND AFT BRIDGE RAIL STAINLESS STEEL
30. S/S GRAB RAIL AROUND BAR UNIT
31. INDIRECT LED LIGHTING UNDER WET BAR AND SEATING
32. OVERHEAD LED LIGHTS
33. INTERLOCKING HEADLINER
34. DAYHEAD WITH TOILET AND WASH BASIN

III. ENGINE PROPULSION & STEERING SYSTEM

1. ENGINE CAT C32 ACERT 1925 HP X 2
GEARBOX ZF2070A MARINE GEAR RATIO 2.467:1 RATIO x 2
2. SOUNDOWN ENGINES MOUNTS TO REDUCE VIBRATION
3. CAT ELECTRONIC ENGINE CONTROL SYSTEM, INCLUDING REMOTE
STATION CONTROL & BACKUP SYSTEM
FIXED STATIONS x 2 AT F/B; REMOTE CONTROL STATION x 2
IN THE AFT DECK PORT & STBD SIDE
4. ENGINE FUEL FILTERS RACOR 75/1000MAX2 W/ALARM x 2
5. GENERATOR FUEL FILTERS RACOR 75/500MAX2 W/ALARM x 2
6. S/S SHAFTS AQUATECH 22 HIGH STRENGTH DIAMETER 4" x 2
7. HIGH PERFORMANCE 5-BLADE PROPELLERS HUNG SHEN NIBRAL
PROPS x 2
8. MAIN & INTERMEDIATE BRONZE SHAFT STRUTS WITH BACKING PLATES
9. SHAFT & RUDDER PACKING GLANDS WITH MAINTENANCE FREE TIDE
STRONG SEALS TIDES MARINE RUDDER SEAL DIAMETER
3 1/2" & SHAFT SEAL DIAMETER 4"
10. HYNAUTIC POWER STEERING SYSTEM WITH PTO ON BOTH ENGINES
PSC2252212 DUAL STATION W/COOLING WATER FLOW DETECTOR
11. SEA WATER STRAINERS FOR ENGINE, GENERATORS, AIR CONDITIONER
AND WATER MAKER
12. SEA COCKS ON ALL UNDERWATER FITTINGS
13. S/S EMERGENCY TILLER
14. S/S RUDDERS DIAMETER 31/2"
15. HEAVY DUTY S/S WIPERS WITH VARIABLE SPEED CONTROLS & SCREEN
WASHER SYSTEM EXALTO 24V x 4, PILOTHOUSE AND SKYLounge
16. BOW AND STERN THRUSTERS WITH CENTRAL HYDRAULIC SYSTEM
17. "AT REST" STABILIZER SYSTEM
18. STEERING WHEELS AT P/H & F/B
S/S 22" DIAMETER x 2
19. UNDERWATER EXHAUST WITH BYPASS

IV. ENGINE ROOM & EQUIPMENT

1. WELL PLANNED, SPACIOUS E/R WITH REMOVABLE NIDACORE
DECK PLATES

Generated On 5/11/2025 5:04 AM by WORLD YACHT GROUP SVC Account

WORLD YACHT GROUP USA

WORLD YACHT GROUP SVC

JOHNSON 93 SKYLounge

Account

**info160920210306@world-yacht-
group.com**

worldyachtgroup.com

Page 7 of 26

2. VAN CAPPELLEN CONSULTANCY DESIGN SOUND INSULATED MATERIALS
3. WATER TIGHT BULKHEAD UP TO ENTRANCE DOOR
4. FULL LENGTH S/S GRAB RAIL ON EACH SIDE OF ENGINE
5. E/R AC LED LIGHTS & DC LED DOME LIGHTS
6. ENGINE COMPARTMENT BLOWER & MOISTURE ELIMINATOR
 DELTA "T" BLOWERS WITH 600P/T4 CONTROL SYSTEM, ADJUSTABLE
 SPEED DRIVE AND COLOR TOUCH SCREEN
 50021918345/8 INTAKE FAN W/DAMPER, AXIAL. 21 IN. x 2 SETS
 50021536330/8 EXHAUST FAN W/DAMPER, AXIAL. 15 IN. x 2 SETS
7. AUTOMATIC FIRE EXTINGUISHING SYSTEM W/AUTOMATIC ENGINES
 & VENTILATION SHUTDOWN
 SEAFIRE FM200 24V
 SEAFIRE FIRE DETECTION & MONITORING SYSTEM THROUGOUT THE BOAT
8. ENGINE ALARM SYSTEM FOR LOW OIL PRESSURE & HIGH
 WATER TEMPERATURE
9. HIGH VOLUME AC FRESH WATER PRESSURE PUMP & ONE DC PUMP
 FOR BACK UP
 HEADHUNTER XR124 1224VDC x 1
 HEADHUNTER M5230 MACH 5 230VAC x 2
10. CHILLED WATER AIR CONDITIONING UNITS LOCATED IN ENGINE ROOM
 CRUISAIR CHILLED WATER AIR CONDITIONING 230V/60HZ W/SMXHT
 DIGITAL CONTROL AIR COMPRESSOR:
 TWCV60C WITH SMART START (60000 BTU) x 3
 AIR HANDLER:
 SALOON: 24000 BTU/HR x 2
 GALLEY: 18000 BTU/HR x 1
 KITCHEN: 12000 BTU/HR x 1
 MASTER CABIN: 18000 BTU/HR x 2
 MASTER BATHROOM: 9000 BTU/HR x 1
 HALLWAY: 9000 BTU/HR x 1
 AFT VIP CABIN/BATHROOM: 18000 BTU/HR x 1
 PORT GUEST CABIN/BATHROOM: 9000 BTU/HR x 1
 STBD GUEST CABIN/BATHROOM: 9000 BTU/HR x 1
 SKYLounge: 24000 BTU/HR x 2
 LOWER HELM: 18000 BTU/HR x 1
 CAPTAIN CABIN: 9000 BTU/HR x 1
 CREW CABIN: 9000 BTU/HR x 1
 CREW GALLEY: 9000 BTU/HR x 1
11. ALUMINIUM & FRP FUEL TANKS W/ HEAD HUNTER FUEL GAUGE
 723 GAL ALUMINIUM FUEL TANK x 2
 1,180 GAL FRP FUEL TANK x 1
 1,355 GAL FRP FUEL TANK x 1
12. OIL CHANGE PUMP SYSTEM FOR ENGINES, GENERATORS AND CLUTCHES
 REVERSO OP704 24V x 1
13. HEAVY DUTY ENGINE ROOM DOOR WITH VIEWING WINDOW

Generated On 5/11/2025 5:04 AM by WORLD YACHT GROUP SVC Account

WORLD YACHT GROUP USA

WORLD YACHT GROUP SVC

JOHNSON 93 SKYLounge

Account

info160920210306@world-yacht-

group.com

worldyachtgroup.com

14. MANUAL BILGE PUMP HENDERSON MK5 UNIVERSAL MOUNT PUMP x 1
15. FUEL TRANSFER PUMP W/ MECHANICAL FLOW METER
TUTHILL FR2410C 24V 1/4HP x 2
TUTHILL 9011 x 2
16. S/S COVER OUTSIDE ENGINE EXHAUST
17. FRESHWATER HOSE FOR FILLING ENGINE AND GENERATOR AND
EXPANSION TANK IN ENGINE ROOM.
BASIN: LP7000 x 1
TAP: SCANDVIK 10477 COMPACT MIXER WHITE x 1
SHOWER DRAIN: RULE 98 800GHP 24V x 1
19. WATER MAKER
SEA RECOVERY 1400GPD(ONE) COMPLETE PREFILTER, OIL/WATER
SEPARATOR, CARBON FILTER, SRC FWF/AW AUTOMATICALLY
RINSES WITH FRESH WATER
20. WORK BENCH OVER THE ENGINE X 2

V. ELECTRICAL SYSTEM

1. 110/220 VOLT ELECTRICAL SUPPLY FROM GENERATOR OR SHORE POWER
2. SHORE POWER INLET W/ RADIO REMOTE CONTROL IN THE TRANSOM
GLENDINNING CABLE MASTER CM8 100AMP 24V WITH 100' CABLE x 2
GLENDINNING RADIO REMOTE CONTROL 04155 (2 TRANSMITTERS) x 1
3. INVERTER
MASTERVOLT MASS COMBI 24/4000100 x 1
4. COLORCODED WIRING FOR EASY IDENTIFICATION
5. GENERATORS
NORTHERN LIGHTS M944T3 TIER III MARINE DIESEL GENERATOR 38 KW
SINGLE PHASE,(60HZ); 110V/220V 60HZ x 2
INCLUDING STANDARD EQUIPMENT(CONTROL PANEL): SOUND SHIELD, WET
EXHAUST MUFFLER, GAS/WATER SEPERATOR
6. AUTOMATIC BATTERY CHARGER
DOLPHIN 80 AMP 24V 115230V 50/60HZ x 2 FOR SERVICE BATTERIES
PROTECH 12V 30AMP x 1 FOR GEN BATTERIES
7. BATTERY SWITCH (VAPOR PROOF) BEP 701MDO x 3
8. 225 AMP/HR GEL CELL SEALED BATTERIES FOR SERVICE, ENGINES
AND GENSETS
SERVICE LIFELINE GPL8DL 255AMP x 4
ENGINE LIFELINE GPL8DL 255AMP x 4
GENSETS LIFELINE GPL8DL 255AMP x 2
9. ALL BATTERIES ENCLOSED WITH FIBERGLASS BOXES AND COVERS

Generated On 5/11/2025 5:04 AM by WORLD YACHT GROUP SVC Account

WORLD YACHT GROUP USA

WORLD YACHT GROUP SVC

JOHNSON 93 SKYLounge

Account

**info160920210306@world-yacht-
group.com
worldyachtgroup.com**

Page 9 of 26

10. MAIN ELECTRIC PANEL INCLUDES AC AND DC CIRCUIT BREAKERS
11. 24 VOLT DC MONITORING AND MAIN CIRCUIT BREAKERS
12. AC VOLT DUPLEX RECEPTACLES LOCATED THROUGHOUT INCLUDING
ENGINE ROOM
13. GFI PROTECTION FOR AC REQUIRED OUTLETS VIMAR 16511.16B 120V~60HZ
14. AUTOMATIC ISOLATION & BOOSTING TRANSFORMER CHARLES 93ISOBOST
100 AMP x 2
15. INDIRECT LED LIGHTING UNDER VALANCE IN SALOON, STATEROOMS,
PILOTHOUSE,HAND RAILS, AND GALLEY
16. COMPLETE ANTI ELECTROLYSIS BONDING SYSTEM VIA 2" COPPER STRAP
AND HULL ANODES
17. SHORE TELEPHONE INLET HUBELL PH6594TV x 1

Generated On 5/11/2025 5:04 AM by WORLD YACHT GROUP SVC Account

WORLD YACHT GROUP USA

WORLD YACHT GROUP SVC

JOHNSON 93 SKYLounge

Account

**info160920210306@world-yacht-
group.com**

worldyachtgroup.com

Page 10 of 26

VI. PLUMBING SYSTEM

1. FWD 150 GALLON HOLDING TANK WITH MACERATOR PUMP & AFT 50 GALLON TANK WITH MACERATOR.
2. WASTE TREATMENT SYSTEM IN ENGINE ROOM
HAMANN SUPER MINI PLUS 230VAC x 1
3. SUMP PUMPS FOR SHOWER RULE 12 24V/2000GPH x 3
4. BILGE PUMPS RULE 16A 24V/3700GPH x 7
5. FLOAT SWITCH
LOWSUREBAIL 382251 x 6
HIGHSUREBAIL 382251 x 9
6. MARINE GRADE LINES FOR FRESH WATER SYSTEM
7. WATER HEATERS W/HOT WATER CIRCULATING PUMP
WATER HEATER: TORRID MV40S 120V 1500W S/S 40 GALLONS x 2
HOT WATER CIRCULATING PUMP: GRUNDFOS UP1016B5/ATLC 115V/60HZ x1
8. 634 GAL S/S WATER TANKS W/ HEADHUNTER TS3001B ELECTRIC WATER GAUGE
9. PRESSURE STORAGE TANKS
HEADHUNTER AVF4 4 GAL x 2
GROCO PST1 1 GAL x 1
10. MANIFOLD FOR OVERBOARD DISCHARGES TO MINIMISE NUMBER OF THRU HULL FITTINGS, IN BRONZE WITH BALL VALVES
11. HIGH WATER BILGE ALARM SYSTEM 7 AREAS
- 12.. DOCKSIDE FRESH WATER INLET PAR JABSCO 444101001 x 1
13. COLOR CODED PIPING SYSTEM FOR EASY IDENTIFICATION
14. BRONZE INTAKE VALVES (BALL). ALL THRU HULL FITTINGS ARE BRONZE
15. 2HP AC FIRE PUMP WITH ONDECK FIRE HOSE
16. BILGE EXHAUST VENTILATIO
PAR 357400013 24V 3" FLANGEMOUNT BLOWER

VII. INTERIOR EQUIPMENT

1. HIGH QUALITY FABRIC SOFAS
2. INTERLOCKING VINYL CEILING PANELS THROUGHOUT
3. HIGH QUALITY DOOR LOCK SETS THROUGHOUT HAFELESANDRA
4. TGI LIGHTING SYSTEM THROUGHOUT TGI SP0101 (#3) / CHROME TRIM

Generated On 5/11/2025 5:04 AM by WORLD YACHT GROUP SVC Account

WORLD YACHT GROUP USA

WORLD YACHT GROUP SVC

JOHNSON 93 SKYLounge

Account

**info160920210306@world-yacht-
group.com**

worldyachtgroup.com

& WHITE COLOR

5. ITALIAN SWITCH & OUTLETS THROUGHOUT VIMAR/ CHROME TRIM
6. CHOICE OF FABRICS FOR BEDDING & CURTAINS
7. INDIRECT LIGHTING SYSTEM THROUGHOUT, UNDER SOFAS, BEDS & CURTAIN VALANCES
IMTRA LED ROPE LIGHTING 24V WARM WHITE
8. INTERIOR STAIRWAYS WITH SAFETY LIGHT SYSTEM
SEA WORLD 10435WW LED ROPE LIGHTING 24V WARM WHITE
9. CEDAR LINED HANGING LOCKER CABINET W/LED LIGHT (SPK LEDCAchW24)
IN EACH CABIN
10. HIGH QUALITY OF SOUND INSULATION IN WALLS BETWEEN CABINS.
11. CENTRAL VACUUM SYSTEM W/ OUTLETS NUTONE 110V/60 HZ x 1
12. OPEN/CLOSE ELECTRIC CURTAIN IN SALOON & MASTER STATEROOMS
13. CHROME COLOR BATHROOM FIXTURE THROUGHOUT
14. FROSTED GLASS FOR SHOWER DOORS
15. PAINTED SOJI SCREEN IN ALL STATEROOMS IN FRONT OF PORTHOLES
16. SALOON:
HIGH QUALITY CUSTOM BUILT UPHOLSTERED SOFA x 2
INTERLOCKING VINYL CEILING PANELS THROUGHOUT
S/S HIGH POLISH AIR DOOR
CUSTOM DESIGN DINING TABLE
CUSTOM DESIGN CEILING SOFFIT
CUSTOM DESIGN TV CABINET
HANGING CLOSET
BOSE LIFESTYLE 535 SERIES III HOME THEATER SYSTEM
SAMSUNG LCD 47" TV
PIONEER BLURAY
DISC PLAYER
APPLE TV
17. MASTER CABIN:
INTERLOCKING VINYL CEILING PANELS
KING SIZE BED
CUSTOM DESIGN HEADBOARD
CUSTOM STORAGE CABINETS
POWER CURTAINS
VANITY LIGHT: QUICK QBCOMPASS/
CHROMED x 1
SIDE SOFA x 1
CEDAR LINED CLOSET
REFRIGERATOR: NORCOLD DE7040 24V
READING LIGHTS: QUICK DOMINIQUE 2235/
CHROMED/SHADE LINEN/ B15D LED x 2
SAMSUNG LCD 47" TV
PIONEER BLURAY

Generated On 5/11/2025 5:04 AM by WORLD YACHT GROUP SVC Account

WORLD YACHT GROUP USA

WORLD YACHT GROUP SVC

JOHNSON 93 SKYLOUNGE

Account

**info160920210306@world-yacht-
group.com
worldyachtgroup.com**

Page 12 of 26

DISC PLAYER
APPLE TV

FUSION STEREO SYSTEM
MSRA205 RECEIVER / MEDIA PLAYER WITH FULL IPOD / IPHONE CONTROL
MSCL602 6" MARINE CEILING MOUNT SPEAKERS x 4
MSBT200 BLUETOOTH ADAPTER MODULE FOR SIRIUS PORT

18. AFT VIP CABIN:

INTERLOCKING VINYL CEILING PANELS
KING SIZE BED
CUSTOM DESIGN HEADBOARD AND CEILING
CUSTOM STORAGE CABINETS
VANITY LIGHT: QUICK QBCOMPASS/
CHROMED x 1
CEDAR LINED CLOSET
READING LIGHTS: QUICK ISABELLA 1525/CHROMED/SHADE LINEN/ B15D
LED x 2
SAMSUNG LCD 32" TV
APPLE TV

FUSION STEREO SYSTEM
MSAV600GDVD / RECEIVER-WITH FUSION LINK
MSCL602 6" MARINE CEILING MOUNT SPEAKERS x 4
MSBT200 BLUETOOTH ADAPTER MODULE FOR SIRIUS PORT

19. PORT GUEST CABIN:

INTERLOCKING VINYL CEILING PANELS
SLIDE TOGETHER TWIN BEDS FOR TWIN OR DOUBLE BED CONFIGURATION
CUSTOM DESIGN HEADBOARD AND CEILING
CUSTOM STORAGE CABINETS
VANITY LIGHT: QUICK QBCOMPASS/CHROMED x 1
CEDAR LINED CLOSET
READING LIGHTS QUICK ISABELLA 1525/CHROMED/SHADE LINEN/ B15D
LED x 2
SAMSUNG LCD 32" TV
APPLE TV

FUSION STEREO SYSTEM
MSAV600G DVD / RECEIVER-WITH FUSION LINK
MSCL602 6" MARINE CEILING MOUNT SPEAKERS x 4
MSBT200 BLUETOOTH ADAPTER MODULE FOR SIRIUS PORT

20. STBD GUEST CABIN:

INTERLOCKING VINYL CEILING PANELS
SLIDE TOGETHER TWIN BEDS FOR TWIN OR DOUBLE BED CONFIGURATION
CUSTOM DESIGN HEADBOARD AND CEILING
CUSTOM STORAGE CABINETS
CEDAR LINED CLOSET
READING LIGHTS: QUICK MAYA 30 /CHROMED/ALUMINIUM x 2
SAMSUNG LCD 32" TV
APPLE TV

FUSION STEREO SYSTEM
MSAV600G DVD / RECEIVER-WITH FUSION LINK
MSCL602 6" MARINE CEILING MOUNT SPEAKERS x 4
MSBT200 BLUETOOTH ADAPTER MODULE FOR SIRIUS PORT

Generated On 5/11/2025 5:04 AM by WORLD YACHT GROUP SVC Account

WORLD YACHT GROUP USA

WORLD YACHT GROUP SVC

JOHNSON 93 SKYLounge

Account

**info160920210306@world-yacht-
group.com
worldyachtgroup.com**

21. CAPTAIN'S CABIN PORTSIDE

TEAK & HOLLY FLOORS
HANGING LOCKER
DOUBLE BED
DESK & READING LIGHTS
SAMSUNG LCD 24" TV
APPLE TV

FUSION STEREO SYSTEM
MSAV700I DVD / RECEIVER WITH FUSION LINK
MSCL602 6" MARINE CEILING MOUNT SPEAKERS x 4
MSBT200 BLUETOOTH ADAPTER MODULE FOR SIRIUS PORT

CREW QUARTERS STBD SIDE
TWIN BEDS
READING LIGHTS

CREW'S GALLEY
REFRIGERATOR: ULINE CO29BTP20 BLK 110V/60 HZ
COOK TOP: SEAWARD SEW32475200 220V/60HZ
MICROWAVE: GE LATEST MODEL
WASHER: GE LATEST MODEL
DRYER: GE LATEST MODEL
4 PERSON DINETTE
AUXILIARY ELECTRICAL PANEL
SAMSUNG LCD 24" TV
APPLE TV

FUSION STEREO SYSTEM
MSAV600G DVD / RECEIVER-WITH FUSION LINK
MSCL602 6" MARINE CEILING MOUNT SPEAKERS x 4
MSBT200 BLUETOOTH ADAPTER MODULE FOR SIRIUS PORT

VIII. GALLEY

1. TRASH COMPACTOR BROAN # 15SSEXF S/S
2. COOKTOP GE LATEST MODEL
3. DOWNDRAFT VENTILATOR GE LATEST MODEL W/ LIGHT
4. DISHWASHER GE LATEST MODEL
5. OVEN GE BUILTIN LATEST MODEL
6. REFRIGERATOR + FREEZER GE LATEST MODELS
7. MICROWAVE GE LATEST MODEL

IX. HEADS

1. MARBLE COUNTER TOP AND LACQUER FINISH IN ALL HEADS
2. SEAMLESS POLYURETHANE FINISH IN ALL HEADS
3. NONSLIDE MARBLE FLOORING SELECTED BY THE OWNER WITH HONEYCOMB BACKING
4. SEALAND MASTERFLUSH 8600 SERIES TOILET SYSTEM IN EACH HEAD
5. EXHAUST FANS IN EACH HEAD MANROSE BSL24C/24V
6. MIRROR CEILING WITH WOOD BORDERS IN EACH HEAD
7. SINKS WITH GROHE FAUCETS

X. LOWER HELM

1. FLOOR: TEAK & HOLLY
2. STAIRWAY: TEAK & HOLLY
3. STAINLESS HANDRAIL OF STAIRWAY
4. LEATHER SETTEE W/ WOOD TABLE
5. HELM CHAIR BESENZONI P217 24V HELM SEAT x 1
6. RUDDER INDICATOR VDO 382233 24V x 1
7. CHOICE OF (I) GARMIN OR (II) RAYMARINE NAVIGATION SYSTEM
 - I. GARMIN
 - GPSMAP® 8215 FULLYINTERGRATEDMULTITOUCH MFD x 2
 - GMI 20 MARINE INSTRUMENT DISPLAY x 1
 - GMR™ 404 XHD OPEN ARRAY RADAR AND 4KW PEDESTAL x 1
 - GARMIN VHF 200 MARINE RADIO x 1
 - GARMIN AIS 600 CLASS B TRANSCEIVER x 1
 - GHP™ 20 MARINE AUTOPILOT SYSTEM WITH SMARTPUMP x 1
 - GARMIN GSD 24 MARINE NETWORK SOUNDER 2KW x 1
 - II. RAYMARINE
 - RAYMARINE A125 MULTIFUNCTIONAL DISPLAY WITH WIFI x 2
 - RAYMARINE I70 MULTIFUNCTION COLOR DISPLAY x 1
 - RAYMARINE 48" HD COLOR OPEN ARRAY AND 4KW PEDESTAL x 1
 - RAYMARINE RAY218E VHF RADIO x 1
 - RAYMARINE AIS 650 CLASS B TRANSCEIVER x 1
 - RAYMARINE EVOLUTION AUTOPILOT WITH P70R CONTROL HEAD & ACU400 ACTUATOR CONTROL UNIT x 1
 - RAYMARINE CP100 DOWNVISION FISHFINDER x 1
8. INTEGRATED INSTRUMENT PANEL AT BOTH HELM STATIONS
9. ENGINE CONSOLE WITH ALL GAUGES
10. COMPASS DANFORTH 5" X 1

XI. REMARKS

New build project. Hull and deck are completed in the molds and waiting for Buyer's choice of customization. Completion time is approximately 14 months depending on other yard projects.

Listing broker has a list of popular options and prices, however, the standard equipment list above is very complete!

*****OPTIONS UPON REQUEST*****

*****ALL SPECIFICATIONS SUBJECT TO CHANGE WITHOUT NOTICE *****

COMMENT

Since this is a new build offering, all photos are of previous projects. Exact layout, wood and stone selection are buyer's choice.

Price FOB Taiwan and includes U.S. Duty and Pre-Delivery Commissioning

Disclaimer

Specifications are provided for informational purposes only. Data was obtained from sources believed reliable but is not guaranteed by owner or brokers. Buyer assumes responsibility to verify all speeds, capacities, consumption's and other measurements contained herein and otherwise provided and agrees to instruct his agents to confirm such details prior to purchase. Vessel is subject to prior sale, price and inventory changes and withdrawal from market without notice.

Generated On 5/11/2025 5:04 AM by WORLD YACHT GROUP SVC Account

WORLD YACHT GROUP USA

WORLD YACHT GROUP SVC

JOHNSON 93 SKYLounge

Account

**info160920210306@world-yacht-
group.com**

worldyachtgroup.com

Page 17 of 26

Salon looking forward



Dining salon



Master stateroom



Master head



Galley



Pilothouse



VIP



VIP head



Generated On 5/11/2025 5:04 AM by WORLD YACHT GROUP SVC Account

WORLD YACHT GROUP USA

WORLD YACHT GROUP SVC

JOHNSON 93 SKYLounge

Account

**info160920210306@world-yacht-
group.com**

worldyachtgroup.com

Page 21 of 26

Crew mess



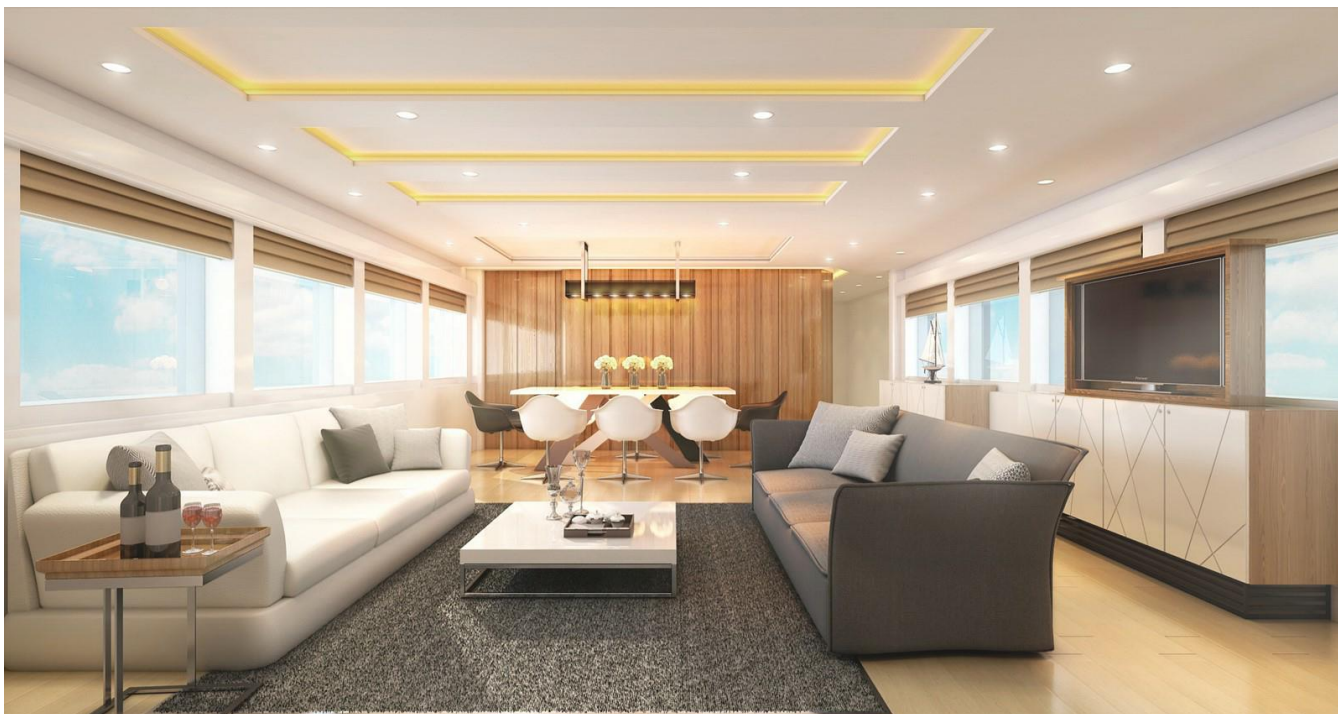
Alt profile



At sea



Salon rendering of next launch



Generated On 5/11/2025 5:04 AM by WORLD YACHT GROUP SVC Account

WORLD YACHT GROUP USA

WORLD YACHT GROUP SVC

JOHNSON 93 SKYLounge

Account

**info160920210306@world-yacht-
group.com**

worldyachtgroup.com

Page 23 of 26

VIP rendering of next launch



Guest rendering of next launch



Crew rendering of next launch



Generated On 5/11/2025 5:04 AM by WORLD YACHT GROUP SVC Account

WORLD YACHT GROUP USA

WORLD YACHT GROUP SVC

JOHNSON 93 SKYLOUNGE

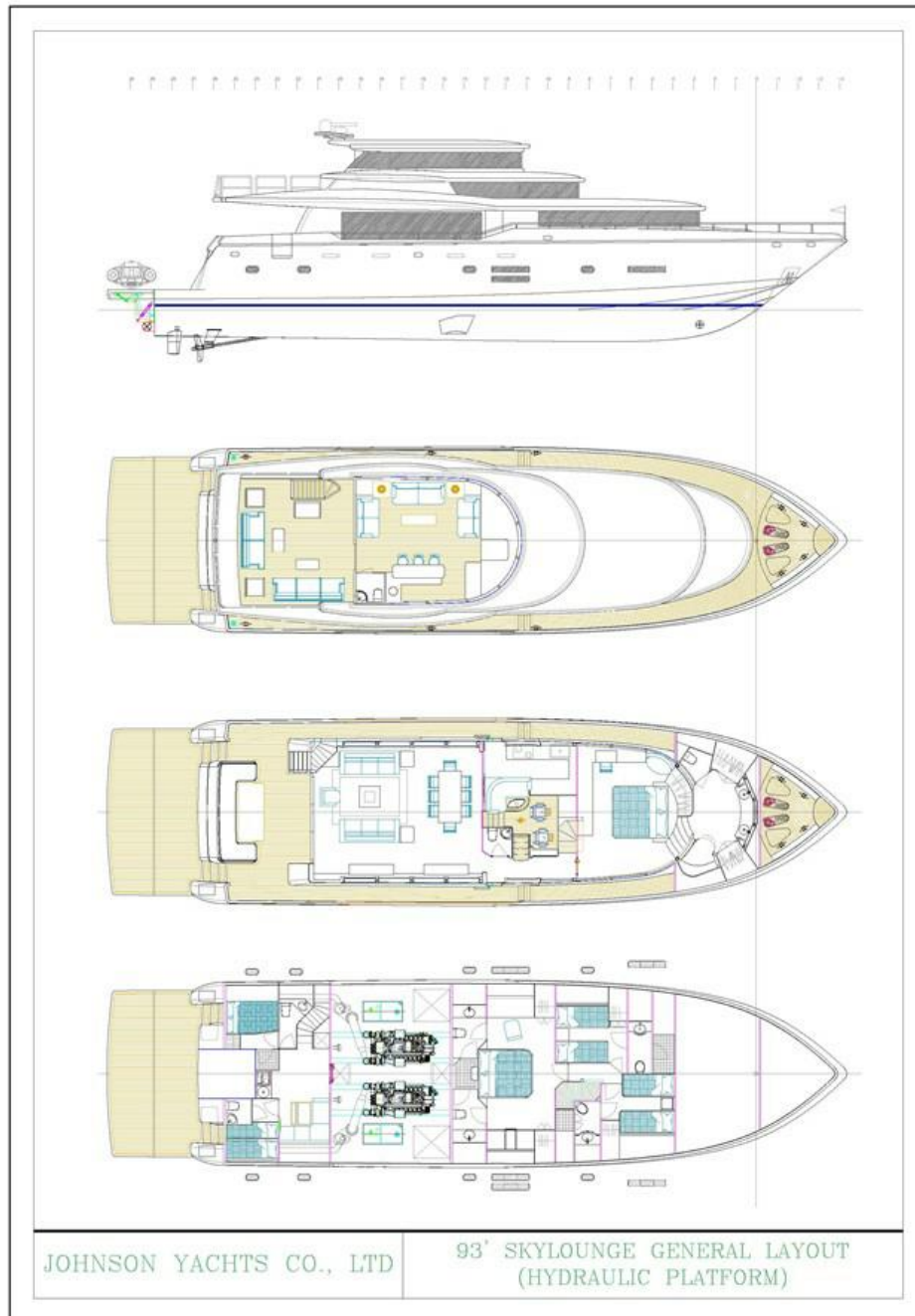
Account

**info160920210306@world-yacht-
group.com**

worldyachtgroup.com

Page 25 of 26

GA (One of several layout plans available)



Generated On 5/11/2025 5:04 AM by WORLD YACHT GROUP SVC Account

WORLD YACHT GROUP USA

WORLD YACHT GROUP SVC

JOHNSON 93 SKYLounge

Account

info160920210306@world-yacht-
group.com

worldyachtgroup.com

Page 26 of 26