



world yacht group

Experts in luxury yachts

CNB 78 New Order



LOA:	81' 7" (24.85m)	Delivery/Model Year:	2025
Beam:	20' (6.1m)	Model:	78
Max Draft:	11' 6" (3.5m)	Builder:	CNB YACHTS
Clearance:	111' 7" (34m)	Type:	Cruising Sailboat
Tonnage:	47.90	Staterooms:	3
Speed:		Fuel Cap:	2500 L (660.43 Gal)
Location:	Aquileia, Friuli-Venezia Giulia Italy	Water Cap:	1500 L (396.26 Gal)
VAT Paid:	VAT Unpaid	Engines:	1x, Volvo, D4, 175 HP
		Price:	(\$3,870,169 USD est.) €3,440,000 EUR

Generated On 5/11/2025 2:04 PM by WORLD YACHT GROUP SVC Account

WORLD YACHT GROUP USA

WORLD YACHT GROUP SVC

CNB 78 New Order

Account

**info160920210306@world-yacht-
group.com**

worldyachtgroup.com

Page 1 of 22

Additional Specifications For CNB 78 New Order:

LOA:	81' 7" (24.85m)	Delivery/Model	2025
Beam:	20' (6.1m)	Year:	
Min Draft:	9' 11" (3m)	Year Built:	2025
Max Draft:	11' 6" (3.5m)	Builder:	CNB YACHTS
Hull Material:	Composite	Model:	78
Superstructure:	GRP	Type:	Cruising Sailboat
Hull Config:	Fin & Bulb	Engines:	175 HP, Single, Inboard, Diesel, Volvo, D4,
Hull Designer:	Philippe Briand	Staterooms:	3
Deck Material:	Teak	Sleeps:	6
Tonnage:	47.90	Heads:	3
Range At Cruise		Crew Quarters:	2
Speed:		Crew Berths:	3
Range At Max		Captain Cabin:	No
Speed:		Classifications:	
Int Designer:	Jean-Marc Piaton	MCA:	ISM:
Ext Designer:	Philippe Briand		
Fuel Capacity:	2500 L (660.43 Gal)		
Water Capacity:	1500 L (396.26 Gal)		
Location:	Aquileia, Friuli-Venezia Giulia Italy		
Price:	(\$3,870,169 USD est.) €3,440,000 EUR		
Tax Status:	VAT Unpaid		

CNB 78 Overview

There is always someone special aboard a CNB. A sailor who values performance, safety and luxury. An adventure seeker who truly loves the sea.

The CNB 78 redefines what an offshore sailing yacht should be. Its predecessor, the CNB 76 was the most successful maxi yacht built in series. The CNB 78 evolves the same style and functionality with even brighter, larger spaces where every detail has been designed for pleasure while sailing or at anchor.

A discerning yachtsman who may be considering a new Swan, Oyster, Yachts or other luxury sailing vessel should take a close look at the CNB 78 or the flagship CNB 88. There is simply nothing like it.

This is a new yacht, built to order for delivery worldwide presented by the exclusive CNB representative for residents of North America and the Caribbean. Inquire to reserve the next production slot for Spring 2025 delivery, while it is still available.

Congratulations to my client from Miami who purchased CNB 78 hull #5 "Belles" on display at the Cannes Yachting Festival 10 - 15 September 2024 at Port Pierre Canto SAIL 207.

Architect - Philippe Briand

To be a yacht architect is to find the magic balance between art and science. No one does that better than Philippe Briand. His designs have achieved over fifteen Yacht of the Year awards and six America's Cup campaigns. In addition, Philippe himself has won two world championships as skipper. His signature sleek profile and sense of proportion combine to make the CNB 78 a stunningly beautiful, fast, easily sailed yacht to explore all oceans.

Interior Designer - Jean Marc Piaton

Designer of the highly successful predecessor, the CNB 76 and Cruising World's Best Luxury Cruiser the CNB 66, Jean-Marc Piaton infused the CNB 78 with the same style; both timeless and innovative, bright, comfortable. An elegance made of balance, harmony and simplicity of lines with even more luxury.

Builder - Solaris Yachts Srl

Over forty years of dedicated boat building and refitting experience, superior technical knowledge and skilled craftsmanship combine to create yachts that are exceptionally seaworthy and luxurious. The quality and finish of the yard's interior joinery, fine woods, superyacht caliber materials, fittings and fixtures are distinctive features of Solaris, renowned and appreciated all over the world.

Main Characteristics

DIMENSIONS

Length overall: 24,85 m

Hull Length: 23,25 m

LWL: 22,20 m

Beam: 6,15 m

DRAFTS

Standard keel (cast iron fin & lead bulb), 14.000 kg, 3,50 m

Optional lead keel (steel fin & lead bulb), 13.000 kg, 3,00 m

Optional lead keel (steel fin & lead bulb), 12.100 kg, 3,50 m

AIR DRAFTS (without antennas)

Standard sail plan: 32,0 m

Performance sail plan: 34,0 m

TANKAGE

Fresh water capacity: 1.500 litres

Fuel capacity: 2.500 litres

Grey Water capacity: 400 litres

Black Water capacity: 400 litres

SAIL AREAS (sails not supplied)

	Standard Sail Plan	Performance Sail Plan
I	30,00 m	31,50 m
J	9,06 m	9,06 m
P	29,00 m	31,00 m
E	9,60 m	9,60 m
Mainsail	160 m ²	175 m ²
Furling genoa	144 m ²	152 m ²
Staysail	79 m ²	82 m ²
Asymmetrical spinnaker	470 m ²	530 m ²

Construction

CONSTRUCTION

- The hull is hand laminated with vinylester resin on all its external layers to have total protection against osmosis, PVC core is glued under vacuum and the inner skin is made in infusion as well as the internal structures and bulkheads. Non structural bulkheads are made of marine grade plywood.
- Carbon fibre reinforcements on keel floors and side chainplates.
- Watertight bulkheads forward and aft fully laminated to hull and deck.
- Deck made of composite/PVC foam sandwich is vacuum infused as well.
- Coachroof structures are reinforced with carbon fibre unidirectionals.
- The entire structure is certified by RINA according to the ISO 12215-5 rule.
- White gel-coat finish on hull, deck and helm seats, antiskid white paint on coachroof.
- Gelcoat finish of the accessible bilges areas;
- Black waterline stripe on hull (optional colours available)
- Cockpit sole and cockpit seats are laid with 10 mm thick teak or Esthec. Main deck and swimming platform are optionally laid with 10 mm thick teak or Esthec.
- The keel, built with a top plate, is fitted to the hull with s/s bolts.
- Twin hanging rudders with vacuum epoxy rudder blades and AISI630 rudder stocks.
- Stainless steel cable on steering car and traveller.
- Opening transom door/swim platform give access to tender garage.

Deck Hardware and Exterior

DECK HARDWARE

- Fixed carbon bowsprit fixed on the bow with built in anchor system;
- Fixed anchor roller, electrical windlass, 63 kg galvanized anchor, 100 m chain Ø 12 mm.
- S/s pushpits and pulpits.
- LED navigation lights.
- Double s/s lifelines with one opening gate at midship on each side.
- 8 mooring cleats and 2 fairleads
- S/s recessed chainplates.
- Self tacking track for jib or staysail sheet,
- Harken (or similar) genoa sheet tracks and cars.
- Recessed companionway sprayhood.
- Harken turning blocks.
- 4 jammers on the mast
- 2 x Harken ST80 (or similar) primary winches in cockpit.
- 2 x Harken ST70 (or similar) multipurpose winches in cockpit.
- 1 x Harken ST80 (or similar) mainsail electric winch in cockpit.
- 2 x Harken ST70 (or similar) halyards and reef winches on deck at mast step, the starboard winch being electric.
- 2 x GRP steering wheels,
- 2 x helmsman seats with console for navigation instruments and compasses. Engine and bow thruster control on STBD side;
- 11 flush deck Solimar hatches on deck;
- 1 x flush deck Solimar hatches on starboard cockpit seat to provide access to the galley
- 1 x flush deck Solimar hatches on port cockpit seat to provide air and light to the aft cabin;
- 2 x accesses to lazarettes in cockpit.
- 1 x access to garage from cockpit.
- 2 x accesses to liferafts lockers from cockpit.
- Teak cockpit table (option to convert it into a sun bath area).
- Space for optional fridge.
- Hot and cold cockpit shower.

FOREPEAK

Generated On 5/11/2025 2:04 PM by WORLD YACHT GROUP SVC Account

WORLD YACHT GROUP USA

WORLD YACHT GROUP SVC

CNB 78 New Order

Account

**info160920210306@world-yacht-
group.com**

worldyachtgroup.com

Page 5 of 22

- The sail locker in the forepeak can accommodate a crew cabin.
- Blind large deck hatch (with exterior lock) (clear part in PMMA as an option),
- S/s ladder.
- The equipment includes:
 - ◊ Lights,
 - ◊ 1 x 230 V electric outlet
 - ◊ Handrails,
 - ◊ 2 bars for halyards on the hull topsides.
- Access to:
 - ◊ Bow thruster (optional),
 - ◊ Chain locker and windlass electrical control box,
 - ◊ Hydraulic manifold for fwd furlers (option)

TENDER GARAGE

- The tender garage is accessible from the transom when opened and from a deck hatch located in the cockpit.
- The garage can accommodate up to a 3.50 m RIB type tender with outboard engine, or a 3.95 m Williams type jet tender with inflatable bow section;
- The large transom door opens to the sea to provide a swimming platform ,
- Removable s/s swim ladder with teak steps is supplied.
- The platform is operated through hydraulic rams;
- A dedicated system to help the tender in and out of the garage is available as option
- The garage is self-draining with natural ventilation;

LAZARETTES

- The two lazarettes are accessible from cockpit through dedicated hatch
- Electric bilge pump from the central portion of the bilge
- 2 bars can serve as hangers on the hull topsides.
- Access to steering mechanism and optional autopilot.
- Gelcoat finish.
- 2 x 230 V electric outlets, one in each lazarette;

SPARS AND RIGGING

- Silver anodised aluminium mast, 3 sets of spreaders.
- Silver anodised aluminium boom (pre-equipped for automatic reefing system).
- Rod standing rigging.
- Running rigging.
- Hydraulic boom vang and backstays, outhaul cylinder and genoa halyard tensioner (four functions unit in the cockpit).
- Deck search light integrated with motoring light
- Anchor light at masthead
- Manual genoa furling system.
- Windex.

Engine, Tankage, Electrical

ENGINE

- Engine : Volvo Penta D4 - 175hp, @ 2800rpm (optional 230hp, @ 3400 rpm)
- Sound proofed engine compartment (extra density plate).
- AISI630 shaft with thrust bearing and CV joint to improve comfort,
- 3 fixed blades propeller.
- Engine control panel on starboard helm console.
- Fuel tankage: 2500 litres in two stainless steel tanks installed in the middle of the boat.
- Double fuel/water separator

ENGINE ROOM

- Underneath the saloon floor, the engine room is located at the most favourable place for the boat's balance.
- Access 2 central hatches in the saloon floor;
- Sound insulated engine compartment.
- Automatic and remote controlled fire extinguisher.
- 2 Light appliances.
- 1 x 230 V outlet.
- This compartment receives the main Volvo diesel engine, the generator in its soundproof cocoon, the Air Conditioning system (option), the Water-maker (option), the water heater, pumps and filters.

WATER

- 1500 litres fresh water in two stainless steel tanks, installed in the middle of the boat.
- Pressurized hot and cold water system.
- 100 L water heater powered at 220V and heat exchanger from main engine.
- Fresh water shore inlet.
- Manual bilge pump.
- Electrical bilge pumps with the options of automatic function for sail locker and Lazarette
- Grey water are collected into sump boxes and delivered through electric pumps to a main 400 L PET tank on starboard;
- Black water are delivered from the electric toilets to the main 400 L PET holding tank on port;
- Valves for emptying the tanks are easily accessible;

ELECTRICAL

- Electrical panel 12V / 24V / 230V. Control panel in the aft area (galley).
- 63 A Shore connection with 25 m cable.
- 17.5 kW, 230 V generator with sound shield.
- 2x Mastervolt Mass Combi Pro 24V/3500-100 A combined battery chargers and inverters for service batteries. One inverter is powering the fridges, the other is powering the sockets;
- 12V primary alternator on main engine.
- 24V secondary alternator on main engine, 115 A.
- 24V service gel batteries bank , 840 Ah capacity C20.
- 2 Main engine and 1 generator starting batteries. 12V-75Ah
- 24V LED lighting throughout.
- 230V electric outlets.

Saloon and Galley

COMPANIONWAY

Generated On 5/11/2025 2:04 PM by WORLD YACHT GROUP SVC Account

WORLD YACHT GROUP USA

WORLD YACHT GROUP SVC

CNB 78 New Order

Account

**info160920210306@world-yacht-
group.com**

worldyachtgroup.com

- Access to the saloon is through a transverse transparent sliding hatch.
- Companionway wooden steps with recessed lighting.
- Handrails.

SALOON

- Just under the deckhouse, the saloon hosts a lounge space and a dining/saloon area.
- Very clear, the saloon enjoys a remarkable panoramic view to the outside.
- Direct and indirect lighting are ensured via overhead and reading lights.
- Night courtesy lights;
- 4 x 230 V and 2 x USB outlets.
- Several lockers alongside the hull and behind the seat backs.
- Space for audio system (option).

Lounge space (starboard)

- 2 opposed settees with coffee table in between
- Lockers alongside with space for optional wine cooler and coffee machine

Dining area (portside)

- Large U shaped settee to port.
- Fixed dining table for 8 guests.
- Optional TV on lifting mechanism.

GALLEY

The galley is positioned in the aft starboard portion of the boat, five steps underneath the saloon area and ensures a better privacy to the guests in the saloon and in the fore cabins. The galley is equipped with high-quality yacht outfit:

- Access to the cockpit via an opening hatch.
- Ventilation and natural light via cockpit hatch and portholes.
- Recirculating range hood.
- Direct and indirect lighting above worktops.
- Functional U shaped organization, with a bar worktop and two stools.

The galley area includes, on centerline a chart table:

- Electrical distribution switchboard.
- Chart table with chart and pencil storage.
- 1 x 230 V and 2 x USB outlets.
- Space for instruments displays, bookshelf.

The galley includes as well:

- Foldable ladder to exit to the cockpit;
- Low and high stowage lockers,
- White Corian © worktop,
- S/s double sink with single lever mixer tap,
- Trash bin under the sink,
- Miele gimballed 4 burners electric stove and oven powered by the inverter within the limits of its power, switchable to shore power or generator;
- Microwave oven powered through the inverter,
- 140 L capacity front opening Miele freezer (aft of galley),
- 230 L capacity front opening Miele fridge with 57 L capacity freezer compartment (front of galley)
- 2 x 230V outlets,
- Fastening belt for cooking when the boat is heeling,

Generated On 5/11/2025 2:04 PM by WORLD YACHT GROUP SVC Account

WORLD YACHT GROUP USA

WORLD YACHT GROUP SVC

CNB 78 New Order

Account

info160920210306@world-yacht-
group.com

worldyachtgroup.com

Page 8 of 22

- Space for Miele dishwasher (optional),
- Space for washer-dryer, 5kgs capacity (optional),
- Space for trash compactor and sink macerator (optional),
- Space for wine cooler (optional),
- Space for additional fridge or freezer (optional).

Accommodations

ACCOMMODATIONS

- Wood finishes : Natural oak and lacquered areas, Optional choice among 2 other ambiances.
- Wide doors.
- Blinds on portholes. (electrical blinds as an option)
- Blinds and mosquito screens on deck hatches.

OWNER'S CABIN

- The owner's cabin is positioned in the forward section of the yacht and runs across at full width.
- Light and ventilation via 2 fixed hull portholes and 3 opening deck hatches.
- General lighting and reading lights.
- Double berth, 2.00m x 1.60m.
- Storage underneath.
- Bookshelves and lockers on the front bulkhead.
- Working desk with drawers topped by a slatted partition. Reservation for an optional TV on a lift mechanism
- Hanging locker to starboard.
- Locker to port.
- Lower lockers to port and starboard.
- Working desk to starboard.
- 2 x 230V and 2 USB outlets.

OWNER'S TOILET

The owner's cabin has a fully private en-suite toilet and shower:

- Separate shower stall with PET grating,
- One opening deck hatch for light and ventilation,
- Overhead light, and second light close to mirror,
- Automatic waste water pump out to grey water holding tank,
- Planus © (or similar) fresh water electric marine toilet,
- Washbasin with hot and cold water,
- Bathroom cabinet with electric shaver plug,
- Mirror, heating towel holder, toilet roll holder.

PORT GUEST CABIN

- Double lateral bed to port, 2.00m x 1.60m, convertible to two single berths.
- Storage underneath.
- Light and ventilation via fixed hull porthole and opening deck hatch.
- General lighting and reading lights.
- Full height locker on portside.
- 2 x 230 V and 2 USB outlets.

PORT GUEST TOILET

The port guest cabin has a private en suite toilet and shower:

Generated On 5/11/2025 2:04 PM by WORLD YACHT GROUP SVC Account

WORLD YACHT GROUP USA

WORLD YACHT GROUP SVC

CNB 78 New Order

Account

info160920210306@world-yacht-
group.com

worldyachtgroup.com

- Separate shower stall with PET grating,
- Opening deck hatch for light and ventilation,
- Overhead light, and second light close to mirror,
- Automatic waste water pump out to grey water holding tank,
- Planus © (or similar) fresh water electric marine toilet,
- Washbasin with hot and cold water,
- Bathroom cabinet with electric shaver plug,
- Mirror, toilet roll holder.

STARBOARD GUEST CABIN

- Double bed, 2.00m x 1.60m.
- Storage underneath.
- Light and ventilation via fixed hull porthole and opening deck hatch.
- General lighting and reading lights.
- Hanging locker to starboard.
- 2 x 230 V and 2 x USB outlets.

STARBOARD GUEST TOILET

The starboard guest cabin has a private en suite toilet & shower:

- Shower stall with PET grating,
- Opening deck hatch for light and ventilation,
- Overhead light, and second light close to mirror,
- Automatic waste water pump out to grey water holding tank,
- Planus © (or similar) fresh water electric marine toilet,
- Washbasin with hot and cold water,
- Bathroom cabinet with electric shaver plug,
- Mirror, toilet roll holder.

AFT PORT GUEST / CREW CABIN

- 2x single beds, 2.00m long. Convertible into a double bed as an option,
- One bunk bed on the topsides available as option
- Light and ventilation via fixed hull porthole, opening portholes and opening hatch to cockpit.
- General lighting and reading lights.
- Storage underneath.
- Full height locker on portside.
- Shelf alongside the bed
- Locker and shelves on centerline
- 2 x 230 V and 2 x USB outlets.

AFT PORT GUEST / CREW TOILET

The aft port cabin has a private en suite toilet & shower:

- Separate shower stall with PET grating,
- Mechanical ventilation,
- Overhead light, and 2nd light close to mirror,
- Automatic waste water pump out to grey water holding tank,
- Planus © (or similar) fresh water electric marine toilet,
- Washbasin with hot and cold water,
- Bathroom cabinet with electric shaver plug,
- Mirror, toilet roll holder.

Disclaimer

The technical specifications and other information in this listing are not contractual. The renderings, illustrations and photos of the boat may include optional equipment or accessories.

Generated On 5/11/2025 2:04 PM by WORLD YACHT GROUP SVC Account

WORLD YACHT GROUP USA

WORLD YACHT GROUP SVC

CNB 78 New Order

Account

**info160920210306@world-yacht-
group.com**

worldyachtgroup.com

Page 11 of 22

Generated On 5/11/2025 2:04 PM by WORLD YACHT GROUP SVC Account

WORLD YACHT GROUP USA

WORLD YACHT GROUP SVC

CNB 78 New Order

Account

info160920210306@world-yacht-
group.com

worldyachtgroup.com

Page 12 of 22

CNB 78 Profile (hull #1)



CNB 78 Sailing (hull #1)



Generated On 5/11/2025 2:04 PM by WORLD YACHT GROUP SVC Account

WORLD YACHT GROUP USA

WORLD YACHT GROUP SVC

CNB 78 New Order

Account

info160920210306@world-yacht-
group.com

worldyachtgroup.com

Page 13 of 22

CNB 78 Sailing Aft View (hull #1)



CNB 78 Sailing View from Port Helm (hull #1)



Generated On 5/11/2025 2:04 PM by WORLD YACHT GROUP SVC Account

WORLD YACHT GROUP USA

WORLD YACHT GROUP SVC

CNB 78 New Order

Account

**info160920210306@world-yacht-
group.com**

worldyachtgroup.com

Page 14 of 22

CNB 78 Cockpit (hull #1)



CNB 78 Companionway (hull #1)



Generated On 5/11/2025 2:04 PM by WORLD YACHT GROUP SVC Account

WORLD YACHT GROUP USA

WORLD YACHT GROUP SVC

CNB 78 New Order

Account

**info160920210306@world-yacht-
group.com**

worldyachtgroup.com

Page 15 of 22

CNB 78 Saloon View Forward (hull #1)



CNB 78 Saloon View Aft (hull #1)



CNB 78 Starboard Lounge (hull #1)



CNB 78 Port Dining Area (hull #1)



Generated On 5/11/2025 2:04 PM by WORLD YACHT GROUP SVC Account

WORLD YACHT GROUP USA

WORLD YACHT GROUP SVC

CNB 78 New Order

Account

**info160920210306@world-yacht-
group.com**

worldyachtgroup.com

Page 17 of 22

CNB 78 Port Dining Area 2 (hull #1)



CNB 78 Galley (hull #1)



CNB 78 Port Guest Cabin (hull #1)



CNB 78 Main Cabin Facing Forward (hull #1)



CNB 78 Main Cabin Facing Aft (hull #1)



CNB 78 #1 - Photo © Nicolas Claris

Generated On 5/11/2025 2:04 PM by WORLD YACHT GROUP SVC Account

WORLD YACHT GROUP USA

WORLD YACHT GROUP SVC

CNB 78 New Order

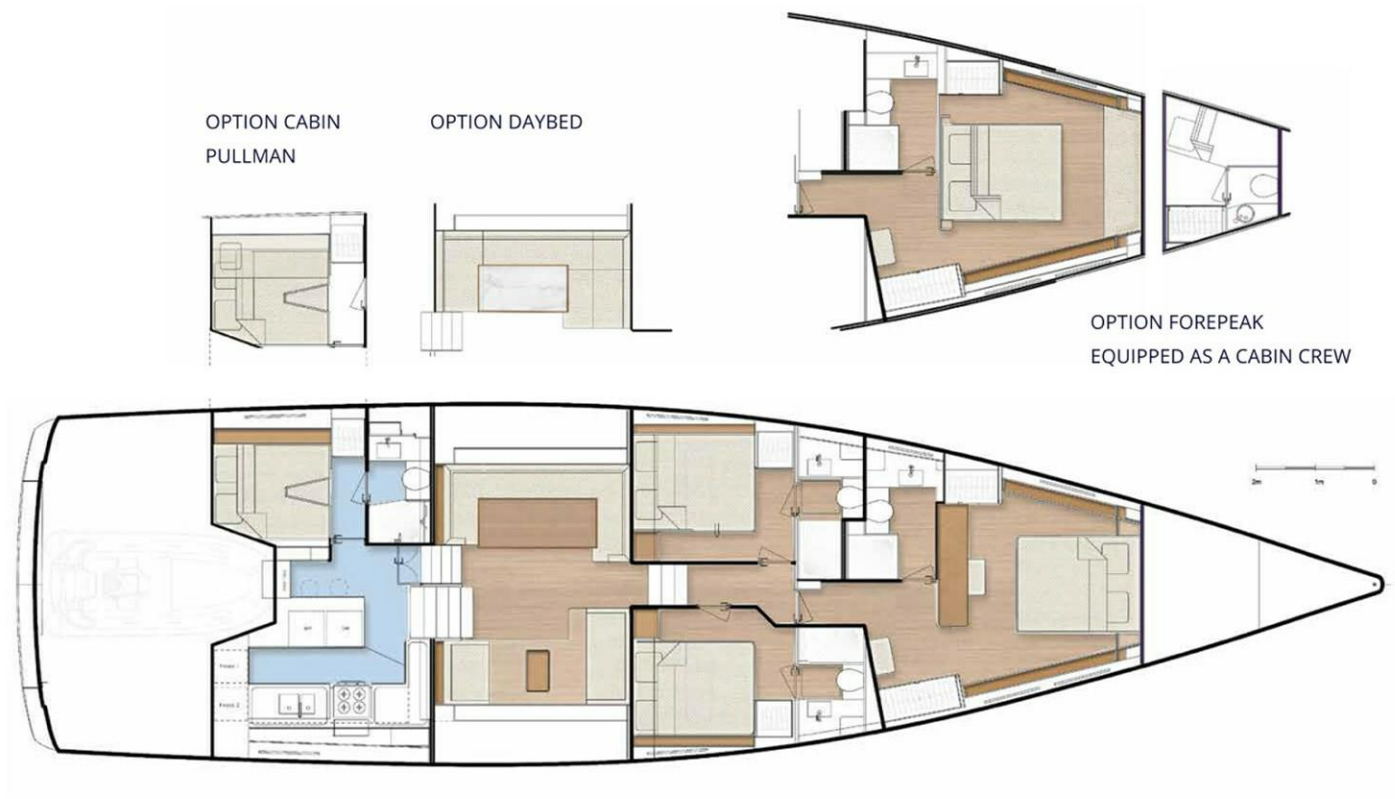
Account

**info160920210306@world-yacht-
group.com**

worldyachtgroup.com

Page 20 of 22

CNB 78 General Arrangement



Generated On 5/11/2025 2:04 PM by WORLD YACHT GROUP SVC Account

WORLD YACHT GROUP USA

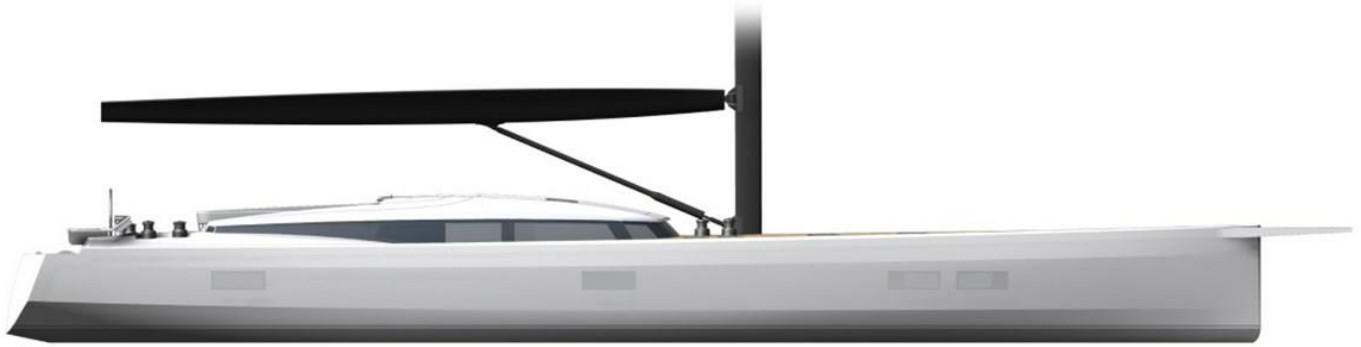
WORLD YACHT GROUP SVC

CNB 78 New Order

Account
info160920210306@world-yacht-
group.com
worldyachtgroup.com

Page 21 of 22

CNB 78 Profile and Deck Plan



Generated On 5/11/2025 2:04 PM by WORLD YACHT GROUP SVC Account

WORLD YACHT GROUP USA

WORLD YACHT GROUP SVC

CNB 78 New Order

Account

info160920210306@world-yacht-
group.com

worldyachtgroup.com

Page 22 of 22