



# 100' San Lorenzo 100 Hard Top

100' (30.48m) | SANLORENZO | 2007

8 GUESTS | 4 CABINS | 6 CREW



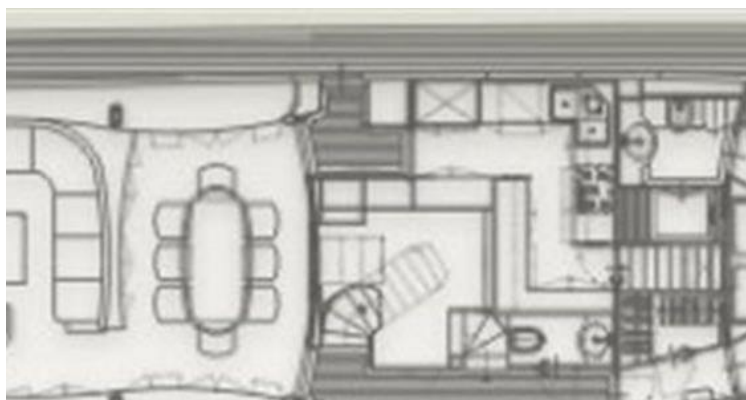
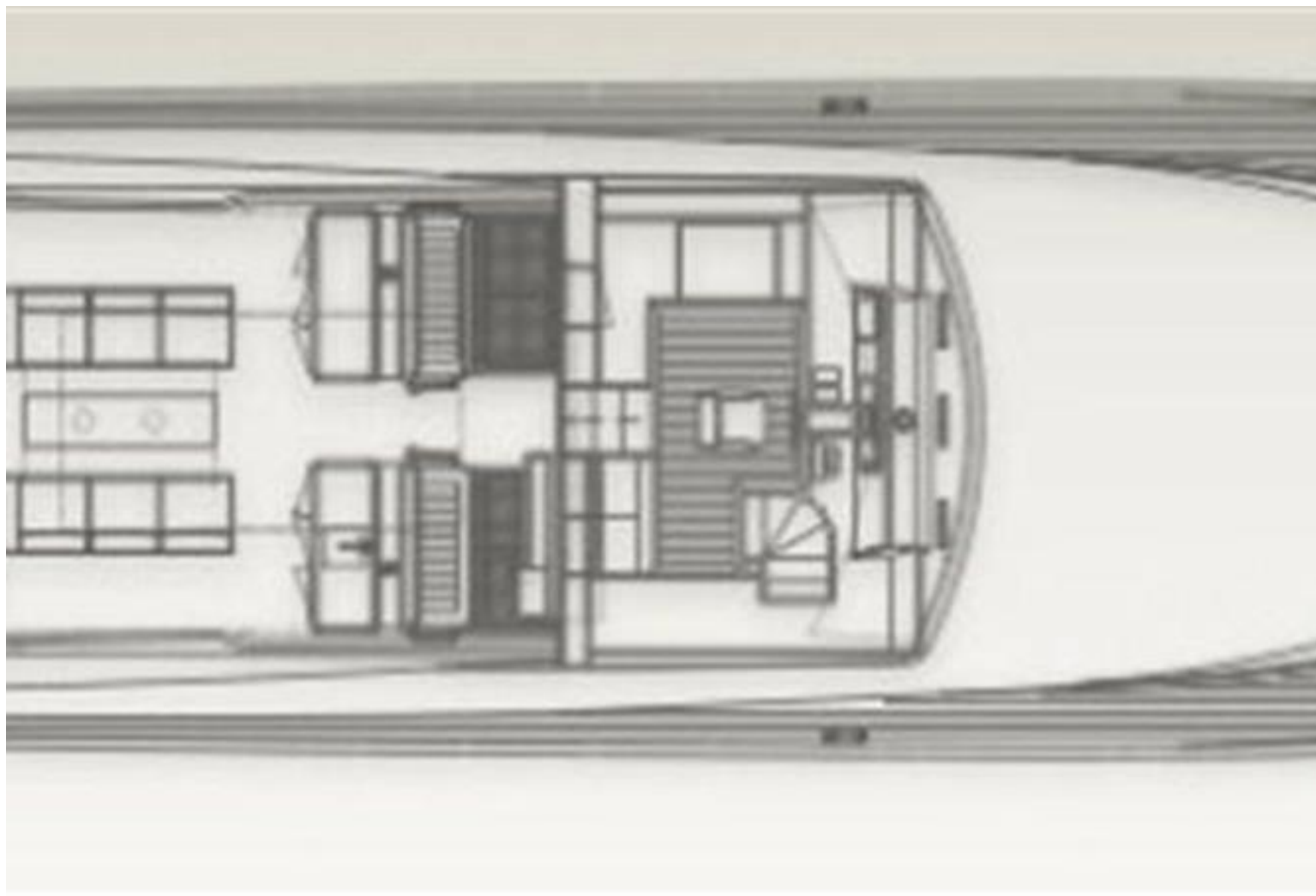
## OVERVIEW



TYPE	Motor	DESIGNER	
LENGTH	100' (30.48m)	SPEED	28 Knots
BEAM	21' 11" (6.68m)	ENGINES	
DRAFT		RANGE	
BUILDER	SANLORENZO	FLAG	Luxembourg
HULL MATERIAL	Fiberglass	TAXES PAID	VAT Paid

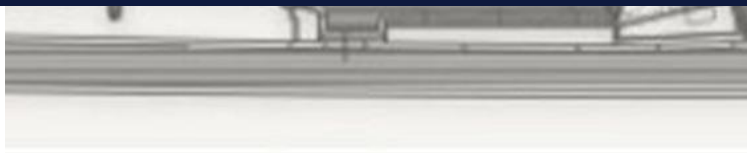
ASKING PRICE \$3,318,895 USD

TJB SUPER YACHTS LTD SVC ACCOUNT M: T: E: INFO120120220343@TJB-SUPER-YACHTS-LTD.COM





# 100' San Lorenzo 100 Hard Top



## DETAILED SPECIFICATIONS



### MAIN CHARACTERISTICS

TYPE	MOTOR
COUNTRY OF REGISTRY	LUXEMBOURG
PORT OF REGISTRY BUILT	2007
REFIT	N/A
BUILDER	SANLORENZO
NAVAL ARCHITECH	N/A
EXTERIOR DESIGNER	
INTERIOR DESIGNER	
LWL	N/A
BEAM	21' 11" (6.68M)
MAX DRAFT	
CONSTRUCTION	N/A
HELIDECKS/HANGER	N/A

## Accommodations

All interior in light contemporary oak in satin finish. Wooden parquette floors on main deck and cream carpet on lower deck. Galley with granit stone sids and floor.

4 en-suite cabins, master cabin on main deck with walk-in wardrobe, VIP cabin midships on lower deck with walk-in wardrobe as well, further forward a twin cabin to the port side and a double cabin to the starboard side. 3 crew cabins for 5 with 3 bathrooms. Crew mess with galley, dinette and laundry. Crew accommodation access through the main galley on main deck. Day head on main deck.

- 2 engine room access from each side deck
- 2 access to fly bridge from aft deck and from inside
- jacuzzi on fly bridge
- wet bar on fly bridge
- raised pilothouse
- large flybridge with jacuzzi
- seating area with table and umbrella on the foredeck
- Hard Top over fly bridge with opening middle part of canvas sliding electrically
- teak on fly bridge, side decks, aft deck and platform
- garage for tender and jet ski with hydraulic opening door and with second access from a aft deck hatch
- safes in master, VIP and captain's cabin

## Specifications

### Galley and Domestic

- Miele 4 burner ceramic / oven
- 2 large fridge with compressor in storage
- 1 large freezer with compressor in storage
- wine cooler
- Miele dish washer
- wet bar with ice maker and refrigerator on fly bridge
- fridge bar in master cabin
- fridge and ice maker in aft deck furniture
- fridge in salon
- dryer and washing machine in crew mess

### Electrical

- 2 Kohler generators at 27kW (at 500 hours each in spring 2010)
- 3 Mastervolt battery chargers for service batteries
- 2 Mastervolt battery chargers for engine batteries

### Main Equipment

- A/C hot and cold throughout with 4 compressors in the engine room
- watermaker Idromar 250 lph
- 3rd engine controls at aft deck with stern and bow thruster controls
- hydraulic bow thruster
- hydraulic stern thruster
- 2 electric anchor windlass Maxwell 4500
- 2 electric stern capstan winches Maxwell 3000

- electro hydraulic Besenconi passerelle with remote control
- tender Williams 3,20 RIB jet drive
- jet ski Sea Doo wave runner 2 seater
- stern platform

## Communication Equipment

- Sat Com KWH
- Sat telephone Trac Phone F-77
- VHF Raymarine 240E with 2nd unit on fly bridge
- SSB transmitter
- weather fax Furuno 408
- Navtex Furuno NX 700
- B&B Interphone system

## Navigation Equipment

- Raymarine chart plotter, GPS, radar, depth sounder with a large 20" screen and a 15" screen
- wind and direction instrument
- rudder indicator
- trim tab indicator
- compass
- computer displaying all yacht systems
- CCTV surveillance system with cameras at aft deck and a flexible one in the engine room (zoom and any direction)
- search light
- on fly bridge Raymarine chart plotter, GPS, radar, depth sounder with a large 20" screen
- on fly Raymarine autopilot
- on fly Raymarine VHF
- on fly Raymarine wind and direction speed
- on fly Raymarine autopilot
- on fly rudder indicator
- on fly trim tab indicator
- on fly compass

## Entertainment Systems

- Sat TV KWH with 6 decoders
- flat screen plasma retractable on fly bridge, salon, master and VIP cabins
- flat screen LCD in 3 cabins
- Bose surround system in salon and master cabin
- radio/CD in all cabins, fly bridge, crew quarters,

## Disclaimer

The company offers the details of this vessel in good faith but cannot guarantee or warrant the accuracy of this information nor warrant the condition of the vessel. A buyer should instruct their agents, or their surveyors, to investigate such details as the buyer desires validated. This vessel is offered subject to prior sale, price change, withdrawal without notice, and tax when applicable.



# 100' San Lorenzo 100 Hard Top



# 100' San Lorenzo 100 Hard Top

+44 (0) 207 183 4393 • [ENQUIRIES@TJBSUPERYACHTS.COM](mailto:ENQUIRIES@TJBSUPERYACHTS.COM)

24.11 CODA STUDIOS, 189 MUNSTER ROAD, FULHAM, LONDON, SW6 6AW, UK