



world yacht group

Experts in luxury yachts

## Vita XL



<b>LOA:</b>	95' (28.96m)	<b>Delivery/Model Year:</b>	2016
<b>Beam:</b>	21' (6.4m)	<b>Builder:</b>	MAIORA
<b>Max Draft:</b>	8' 2" (2.49m)	<b>Type:</b>	Motor Yacht Flybridge
<b>Tonnage:</b>	0.00	<b>Staterooms:</b>	4
<b>Speed:</b>		<b>Engines:</b>	2x, CAT, C32,
<b>Location:</b>	Cancun, Quintana Roo Mexico	<b>Price:</b>	\$3,499,000 USD
<b>VAT Paid:</b>			

Generated On 12/13/2025 7:02 AM by WORLD YACHT GROUP SVC Account

**WORLD YACHT GROUP USA**

**WORLD YACHT GROUP SVC**

**Vita XL**

**Account**

**info160920210306@world-yacht-  
group.com**

**worldyachtgroup.com**

Page 1 of 16

### Additional Specifications For Vita XL:

<b>LOA:</b>	95' (28.96m)	<b>Delivery/Model</b>	2016
<b>Beam:</b>	21' (6.4m)	<b>Year:</b>	
<b>Max Draft:</b>	8' 2" (2.49m)	<b>Year Built:</b>	2016
<b>Hull Material:</b>	Fiberglass	<b>Builder:</b>	MAIORA
<b>Range At Cruise Speed:</b>		<b>Type:</b>	Motor Yacht Flybridge
<b>Range At Max Speed:</b>		<b>Engines:</b>	Twin, CAT, C32, 682hrs / 682hrs
<b>Location:</b>	Cancun, Quintana Roo Mexico	<b>Staterooms:</b>	4
<b>Price:</b>	\$3,499,000 USD	<b>Heads:</b>	5
		<b>Captain Cabin:</b>	No
		<b>Classifications:</b>	
		<b>MCA:</b>	ISM:

## **Lower Helm**

Furuno GPS

Furuno depth

Furuno wind meter and temp

Simrad autopilot

Furuno VHF

Engine displays

ABT track stabilizer control

BCS bow and stern thruster control

FLIR control

Leather electric captain chair

Samsung TV

Sitting bench with table

Stbd side door

## **Galley**

Port side door

Miele cook top

Miele oven

GE refrigerator

Ice maker

Dual stainless steel sink

## **Salon**

Wine cooler

Electric salon door

U shape sofa sitting

Samsung TV

Bose sound system

Salon table sitting for 8 guest

Day head

### **Cockpit**

Large cockpit

Sitting for 8 guest

Couch

Samsung TV

Ice maker

Selling camera

Drawer Refrigerator

Side boarding doors

Stair to fly bridge

Retractable aft pasarela

Dual 100 amp cords

14' zodiac with 60 hp Yamaha

Hydraulic swim platform

### **VIP Stateroom en suite**

Samsung TV

Port sitting couch

Stbd storage closet

### **Starboard Stateroom en suite**

Three beds

Closet

Samsung TV

### **Port Stateroom en suite**

Three beds

Closet

Samsung TV

### **Master en suite**

walk in closet

Lots of storage and walk-in closet

Sitting area with table

Samsung TV

Electric blinds

### **Flybridge Helm**

FLIR camera control

Furuno GPS

Engine controls

Engine gages

ABT track controls

Trim gauges and controls

BCS bow and stern thruster control

Windlass controls

### **Flybridge**

Forward access to lower helm

Dual BBQ

Ice maker

Refrigerator

Jacuzzi

Samsung TV

### **Bow**

Access hatch for crew quarters.

Dual windlass

Large cushion

Large bow storage

Electric shore power

### **Engine room & lazarette**

CAT engines C32. 682 hours

2 generators 32 kw. Koehler. 1450 hours

Dual Water makers Idromar

Hydraulic pumps

Black water treatment Tecnicomar

Back up steering controls

Chiller a/c System. Dometic

### **Disclaimer**

The Company offers the details of this vessel in good faith but cannot guarantee or warrant the accuracy of this information nor warrant the condition of the vessel. A buyer should instruct his agents, or his surveyors, to investigate such details as the buyer desires validated. This vessel is offered subject to prior sale, price change, or withdrawal without notice.



Generated On 12/13/2025 7:02 AM by WORLD YACHT GROUP SVC Account

**WORLD YACHT GROUP USA**

**WORLD YACHT GROUP SVC**

**Vita XL**

**Account**  
**info160920210306@world-yacht-**  
**group.com**  
**worldyachtgroup.com**

Page 7 of 16









Generated On 12/13/2025 7:02 AM by WORLD YACHT GROUP SVC Account

**WORLD YACHT GROUP USA**

**WORLD YACHT GROUP SVC**

**Vita XL**

**Account**  
**info160920210306@world-yacht-**  
**group.com**  
**worldyachtgroup.com**

Page 9 of 16



Generated On 12/13/2025 7:02 AM by WORLD YACHT GROUP SVC Account

**WORLD YACHT GROUP USA**

**WORLD YACHT GROUP SVC**

**Vita XL**

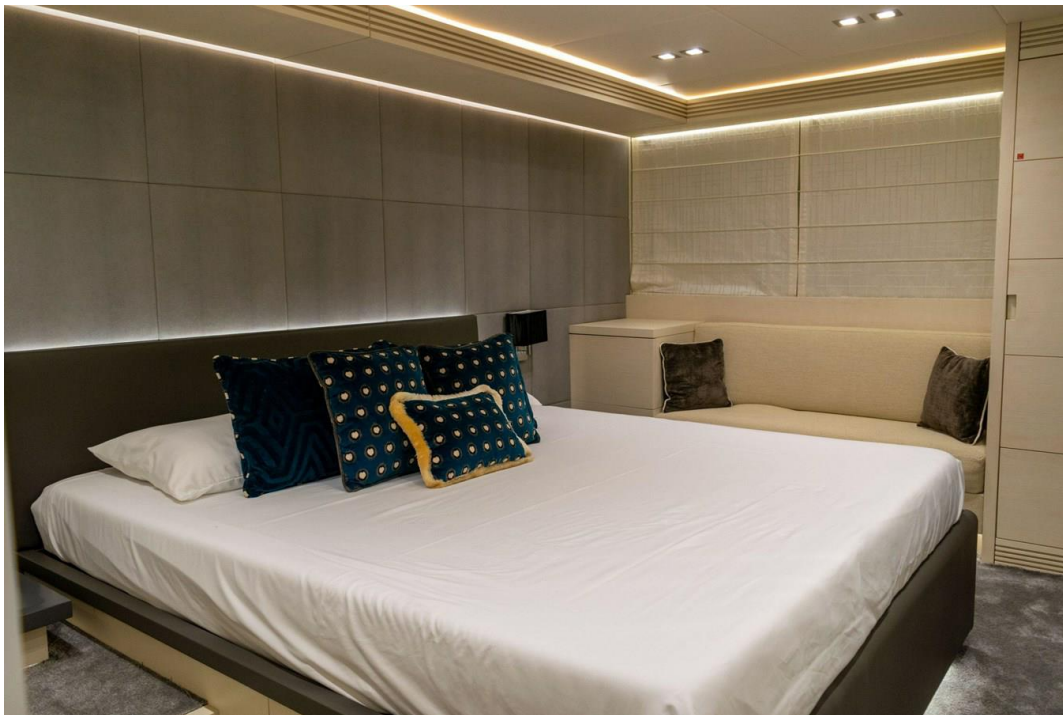
**Account**

**info160920210306@world-yacht-  
group.com**

**worldyachtgroup.com**

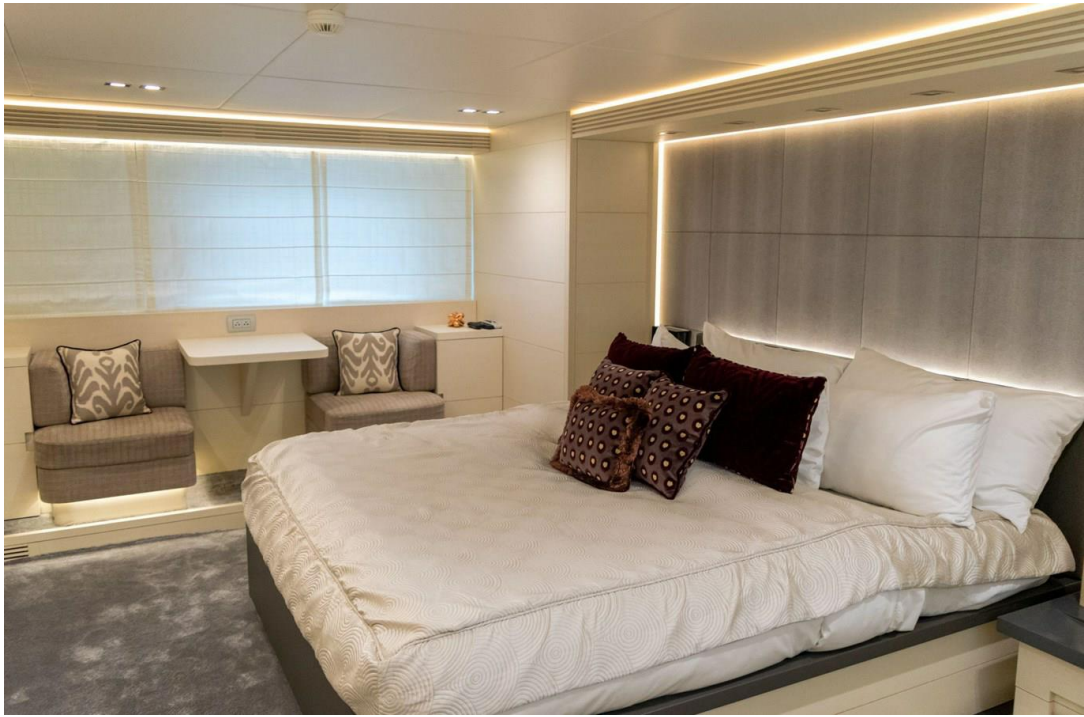
Page 10 of 16



















Generated On 12/13/2025 7:02 AM by WORLD YACHT GROUP SVC Account

**WORLD YACHT GROUP USA**

**WORLD YACHT GROUP SVC**

**Vita XL**

**Account**

**info160920210306@world-yacht-**  
**group.com**

**worldyachtgroup.com**

Page 16 of 16