



world yacht group

Experts in luxury yachts

ENSO



LOA:	82' 7" (25.15m)	Delivery/Model	2016
Beam:	20' 9" (6.3m)	Year:	
Max Draft:	11' 2" (3.4m)	Model:	825
Tonnage:	0.00	Builder:	OYSTER MARINE LTD
Speed:	10 Knots	Type:	Cruising Sailboat
Flag:	BVI	Staterooms:	4
Location:	Barcelona, Catalonia Spain	Engines:	1x, Cummins, QSB 6.7MD- 305 , 305 HP
VAT Paid:	VAT Unpaid	Price:	(\$4,443,944 USD est.) €3,950,000 EUR

Generated On 5/11/2025 7:26 AM by WORLD YACHT GROUP SVC Account

WORLD YACHT GROUP USA

WORLD YACHT GROUP SVC

ENSO

Account

**info160920210306@world-yacht-
group.com**

worldyachtgroup.com

Page 1 of 12

Additional Specifications For ENSO:

LOA:	82' 7" (25.15m)	Delivery/Model	2016
Beam:	20' 9" (6.3m)	Year:	
Max Draft:	11' 2" (3.4m)	Year Built:	2016
Hull Material:	Fiberglass	Refit Year:	2021
Deck Material:	Teak over Fiberglass	Builder:	OYSTER MARINE LTD
Range At Cruise		Model:	825
Speed:		Type:	Cruising Sailboat
Range At Max		Engines:	305 HP,Single, Inboard, Diesel, Cummins, QSB 6.7MD-305 , 3800hrs
Speed:	Max 10 Knots	Staterooms:	4
Flag:	BVI	Sleeps:	12
Location:	Barcelona, Catalonia Spain	Heads:	4
Price:	(\$4,443,944 USD est.) €3,950,000 EUR	Crew Berths:	2
Tax Status:	VAT Unpaid	Captain Cabin:	No
		Classifications:	
		MCA:	ISM:

DESCRIPTION

“Enso” is hull N° 06 of the Oyster 825 and has been meticulously maintained by her professional crew. This stunning example has an exemplary ‘superyacht’ specification and is ready for adventure in Summer 2023.

She has new in-boom furling mainsail and and furling jib from North sails in 3Di Ocean with just one season use. A complete rig inspection was undertaken in 2021 including the full overhaul of the Reckman furling gear. New grey and blackwater pipework throughout in winter 2021/22. “Enso” has received constant maintenance with an open budget to ensure that this yacht is in truly top condition in all aspects.

Her interior refits in 2019 and 2021 included the modification to the salon with incorporation of beautifully fitted glasswear and beverage display units, new sofa to starboard and the installation of large rainfall shower heads in all bathrooms.

This Oyster 825 shows "as new" and will give her next new owner a combination of superyacht comfort with excellent sailing performance.

ACCOMMODATION

ENSO sleeps 11 Guests in 4 guest cabins all with ensuite bathrooms (inc two Pullman berths + 1 pipecot)

Sleeps two crew in port side forward bunk cabin with bathroom Watertight bulkhead door fwd to sail locker

Guest cabins comprising of: - King sized double master cabin aft with ensuite bathroom - Twin VIP cabin aft Port with bathroom ensuite (Twin beds slide to create double. Also pipecot and pullman fitted)

- Twin VIP cabin aft Starboard with bathroom ensuite (Twin beds slide to create double. Also pullman fitted) - Double guest cabin en suite to starboard forward of saloon (also can be used as Captain's cabin if required)

ENTERTAINMENT

ENSO has Wi-Fi hotspot throughout the boat. This can be accessed when the ships Yachtspot system is connected to a shore Wi-Fi supply or a 3G/4G SIM has been inserted to Yachtspot. The yacht is fitted with a Pepwave router and Synology Diskstation central media server which stores all of ENSO's onboard music & movies. This Diskstation has dual 8TB hard drives and via DS Video provides media throughout the yacht. All re-fitted 2021

Saloon

Samsung 32" TV, fully hidden when electronically lowered.
Apple TV (connected to central media server and boat pc).
Arcam amplifier connected to a full surround sound and subwoofer system.
Kramer network socket for wired connection to boat network/sat comms.

Fwd Stbd Double cabin (Captain's or guest cabin)

Fusion stereo, Samsung 22" TV. Apple TV (connected to the central media server). The Fusion stereo is also connected to speakers in the galley, turned on or off by a simple wall switch in the galley.

Owners cabin

Samsung 40" TV, Apple TV (connected to central media server with DS Video), surround sound & subwoofer system.
Arcam amplifier.
Kramer network socket for wired connection to boat network/sat comms.

Twin Guest Cabins port and Starboard

Samsung 32" Led TV's connected to central media server fitted 2021.

Cockpit

Bluetooth enabled Fusion stereo connected to the yacht's media server. 4 x speakers.

Galley

Fitted iPad Pro

RIG and SAILS

RIG:

Hall Spars carbon painted white mast Carbon Oceanfurl in-boom hydraulic furling boom In-boom preventer with sheave at aft end of boom 2 x Harken hydraulic backstay tensioners with mechanical lock-off 1 x Harken hydraulic vang with positive support 'No-Strike' lightning ion dissipater at masthead Glomex FM/TV antenna at masthead Reckmann RF-90 hydraulic headsail furler for blade Jib + manual backup. Aramid removable storm jib stay, storm jib halyard and hydraulic tensioner. Reckmann CZ 8 hydraulic furler fitted into bowsprit – for Code Zero and A2 Spinnaker Carbon spinnaker pole stowed vertically on mast (inc halyards, pole lift, sheets, guys and tender lift track)

SAILS:

North Sails 3Di 700 mainsail new 2022

North Sails 3Di 700 furling blade jib new 2022 C-tech carbon battens Storm jib soft hanked in white with day-glo orange strip – Dacron North Sails Code Zero sail in Aramid downwind laminate CZ90 DP (inc PBO torsion rod)

North Sails asymmetric G2 Spinnaker, Norlon NO150 c/w C-tech inflatable snuffer

WINCHES

Lewmar 3500 captive winch for main halyard Lewmar captive winch for mainsheet 2 x Lewmar 88/3 SHST 3-speed, hydraulic drive self-tailing primary winches 2 x Lewmar 77/2 SHST 2-speed, hydraulic drive, self-tailing secondary winches 1 x Lewmar 68 SHST hydraulic drive, stainless steel GY, self-tailing halyard winch 1 x Lewmar 77 SHST hydraulic drive, stainless steel GY, self-tailing halyard winch Deck switches upgraded to stainless steel Lewmar Grand Prix.

ENGINE and GENERATORS

ENGINE

Main engine: Cummins turbo-charged 224kW (305Hp at 2600rpm) QSB 6.7MD-305 MCD Twin disc MG 5075A gearbox Hours: 3800Hrs (November 2022)

4-bladed 32" Brunton Varifold folding propeller Ambassador rope cutter 2 x alternators controlled by a Mastervolt Alpha Pro Regulator.

GENERATORS

Onan MDKBT e-QD 22.5kW 50Hz/230V AC 4-cylinder diesel generator

Hours: 5500Hrs (November 2022) Onan MDKBN e-QD 11.0kW 50Hz/230V second generator

Hours: 7350Hrs (November 2022) Reverso electric oil change pump with (four take offs - one from each generator and one from the engine and gearbox)

NAVIGATION and COMMUNICATION

SIRS Marine Major 150mm diameter magnetic steering compass Hand compass Raymarine i70 displays at cockpit helm New 2022 1 x Raymarine p70 pedestal pilot control 1 x Raymarine Ray 260E VHF (repeater) Hailer/horn mounted on radar bracket at mast (first microphone and horn button 1 x Raymarine e127 hybrid touch radar/plotter Raymarine HD digital 4kW scanner Raymarine AIS 650 Echomax Active Radar transponder Sailmon multi function display mounted aft face of cockpit seating New 2022 Autopilots: 2 x Raymarine SPX SOL SmartPilot with p70 control head unit.

CHART TABLE: 1 x Raymarine i70 display 1 x Raymarine Ray 260E VHF (main station) 1 x Raymarine e127 hybrid touch radar/plotter with GS195 Glass Bridge 19" touchscreen display Furuno N300 Navtex Furuno GP32 GPS receiver as stand-alone unit (emergency backup) ICOM IC 802 SSB radio.

CAPTAIN'S CABIN (or 4th Guest Cabin) Furuno RD-33 remote display unit (multi) Ray 260E VHF handset

OWNER'S CABIN Furuno RD-33 remote display unit (multi)

SATELLITE PHONE Sailor Fleet Broadband 250 BGAN satellite telephone with voice and data (up to 280kbps,) linked to PC BT Elements 1K cordless telephone connected to satellite phone Yellow Brick – Yellow Standard 3 satellite based tracking unit with bluetooth

SHIPS COMPUTER (at chart table) AG Neovo SX 17 – black 17" glass-fronted LCD display Nexcom Nise 3600E Mini PC with Intel i5 chip, 240GB SSD, 8GB RAM, Windows 7, CD/DVD drive Inventica Yacht Spot 4G EU/Asian version – wireless client Wi-Fi, new Pepwave router, Shakespeare Wi-Fi antenna Comrod AP21 mast mounted 4G antenna with LMR 400 coaxial cable assembly CISCO WAP371 Wi-Fi access point, simultaneous dual band (Allows portable devices to access 4G data, shore Wi-Fi data and NAS drive)

ensoaerial



ensoaft



ensoaft2



enso swim platform



enso salon



enso salon2



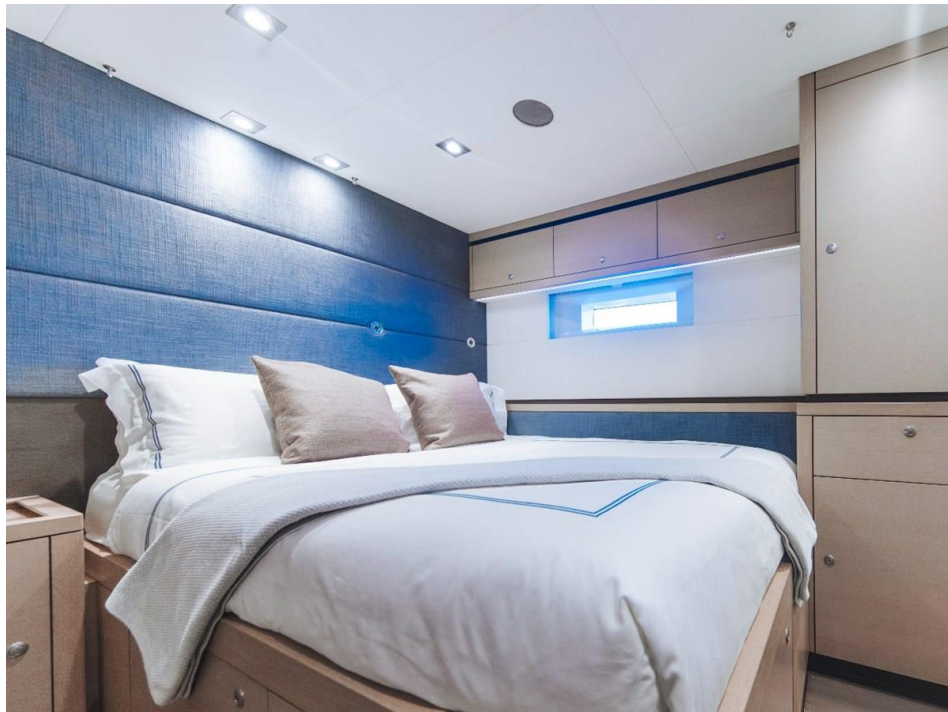
enso salon3



enso master



enso cabin



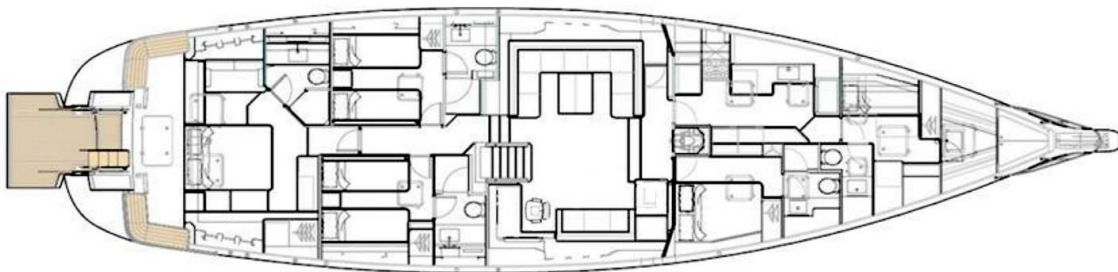
enso galley



enso engine room



Enso Layout



Generated On 5/11/2025 7:26 AM by WORLD YACHT GROUP SVC Account

WORLD YACHT GROUP USA

WORLD YACHT GROUP SVC

ENSO

Account
info160920210306@world-yacht-
group.com
worldyachtgroup.com

Page 12 of 12