



<b>Type</b>	<b>Motor Yacht</b>	<b>Classification</b>	--
<b>Top</b>	--	<b>Class Type</b>	--
<b>Model</b>	<b>50</b>	<b>Builder</b>	<b>PERSHING</b>
<b>Manuf. Year</b>	<b>2007</b>	<b>Naval Architect</b>	--
<b>Refit Year</b>	--	<b>Interior Design</b>	--
<b>LOA</b>	<b>52' (15.83m)</b>	<b>Hull</b>	<b>Fiberglass</b>
<b>Beam</b>	<b>14' 5" (4.38m)</b>	<b>Deck</b>	--
<b>Draft Min/Max</b>	<b>-- / 9' 9" (2.95m)</b>	<b>Engines</b>	<b>2x, MAN, CRM V8/900, 900 HP</b>
<b>GRT</b>	--	<b>Max Speed</b>	<b>40 Knots</b>
<b>Fuel</b>	<b>2400 L (634.01 Gal)</b>	<b>Cruise Speed</b>	<b>35 Knots</b>
<b>Water</b>	<b>500 L (132.09 Gal)</b>	<b>Range</b>	--
<b>Flag</b>	<b>United Kingdom</b>	<b>Accommodations</b>	<b>6 in 3 strms 1 crew</b>

**ASKING PRICE: (\$426,912 USD est.)**  
**€370,000 EUR**

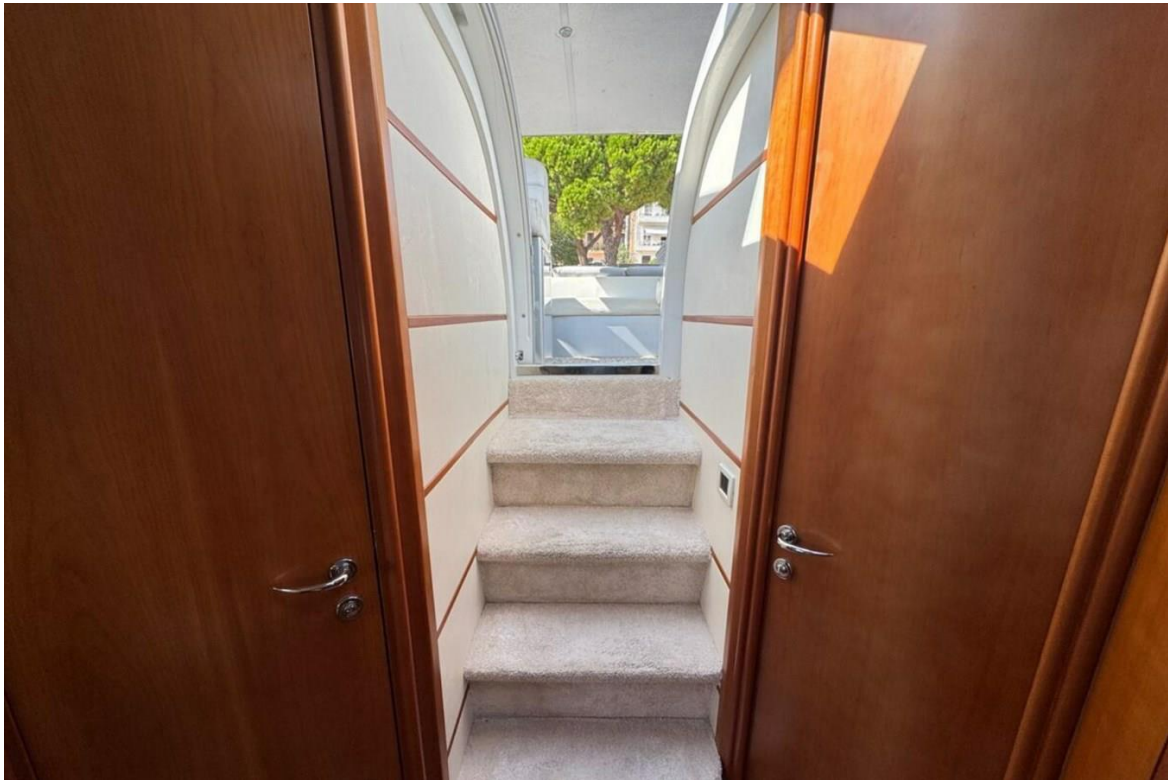






















## Overview

ARKADIA, from Pershing's 50 series, is a high-performance yacht reaching 40 knots, powered by twin MAN engines with Arneson surface drives. Her sleek silver design, wide side decks, and large swim platform offer both style and easy water access.

Blending thrill and comfort, she features an open-air cockpit with sunpad, dining area, and wet bar, plus a refined interior with salon, galley, and three staterooms - sleeping up to six guests.

### Key Features

- Incredible 40 knots top speed
- Modern exterior design
- Ready for next season
- VAT Paid

## Navigation Equipment

- Navigation lights
- Compass
- Depth instrument
- Autopilot
- VHF

## Electrical Equipment

- Stern thruster
- Bow thruster
- Battery charger
- Generator
- Air conditioning
- Television
- Shorepower
- Sliding roof
- BBQ griddle
- Fusion audio

## General Equipment

- Anchor
- Fire extinguisher
- Anchor winch
- Bathing platform
- Hydraulic passarelle
- Teak laid cockpit
- Wetbar
- Hard Top
- Cockpit Table
- Bow cushions

- Bathing ladder

## Accommodation

- 1 Master with bathroom (Toilet + Shower)

- 1 Guest + 1 Twins with shared Bathroom (Toilet + Shower)

## Galley

- Hob Fridge/Freezer