



world yacht group

Experts in luxury yachts

NOE



| | | | |
|-------------------|---------------------------------------------------|-----------------------|------------------------------------------|
| LOA: | 93' 10" (28.6m) | Delivery/Model | 2013 |
| Beam: | 21' 4" (6.5m) | Year: | |
| Max Draft: | 4' 4" (1.3m) | Model: | 2800 OPEN |
| Tonnage: | 0.00 | Builder: | GUY COUACH |
| Speed: | 28 Knots 34 Knots | Type: | Sport Yacht Convertible |
| Flag: | FRENCH | Staterooms: | 4 |
| Location: | Grimaud, Provence-Alpes- Cote-d'Azur France | Fuel Cap: | 8500 L (2245.46 Gal) |
| VAT Paid: | VAT Paid | Water Cap: | 2000 L (528.34 Gal) |
| | | Engines: | 2x, MTU, 16V2000 M93, 2400 HP |
| | | Price: | (\$3,318,895 USD est.) €2,950,000 EUR |

Generated On 5/11/2025 2:02 PM by WORLD YACHT GROUP SVC Account

WORLD YACHT GROUP USA

WORLD YACHT GROUP SVC

NOE

Account

**info160920210306@world-yacht-
group.com**

worldyachtgroup.com

Page 1 of 19

Additional Specifications For NOE:

| | | | |
|-------------------------------|-----------------------------------------------|-------------------------|--------------------------------------------------------------------------|
| LOA: | 93' 10" (28.6m) | Delivery/Model | 2013 |
| Beam: | 21' 4" (6.5m) | Year: | |
| Max Draft: | 4' 4" (1.3m) | Year Built: | 2013 |
| Hull Material: | Kevlar Composite | Builder: | GUY COUACH |
| Superstructure: | Carbon Fiber | Model: | 2800 OPEN |
| Hull Config: | Planing | Type: | Sport Yacht Convertible |
| Deck Material: | Teak over Fiberglass | Top: | Open |
| Range At Cruise Speed: | | Engines: | 2400 HP,Twin, 2013, Inboard, Diesel, MTU, 16V2000 M93, 1066hrs / 1066hrs |
| Range At Max Speed: | | Staterooms: | 4 |
| Speed: | Cruising 28 Knots | Sleeps: | 8 |
| | Max 34 Knots | Heads: | 4 |
| Fuel Capacity: | 8500 L (2245.46 Gal) | Captain Cabin: | No |
| Water Capacity: | 2000 L (528.34 Gal) | Classifications: | |
| Flag: | FRENCH | MCA: Unknown | ISM: Unknown |
| Location: | Grimaud, Provence-Alpes-Cote-d'Azur France | | |
| Price: | (\$3,318,895 USD est.) €2,950,000 EUR | | |
| Tax Status: | VAT Paid | | |

Noé

Noé combines a sporty exterior and a bright welcoming interior that will make you feel on a much larger boat. Her planning hull has been designed for performance, offering to Noé an outstanding seaworthiness behavior. Built on-order by Couach shipyard in 2013, Noé has since been exploring the Med with only her experienced owner and his captain; she's entering the market in immaculate condition.

She offers a family-friendly layout with accommodation for eight guests in four lower deck cabins. There is a full-beam owner's suite, two double cabins and one VIP double cabin, each with its own ensuite bathroom & closet. Cabins design allies Oak wood wall covering and warm white fabrics, with elegant direct and indirect lightings, resulting in a comfy and soothing arrangement for all guests.

MAIN DECK

Exterior

The aft welcomes you with a great sunpad, ideal to enjoy a smooth cruise.

The sunpad turns to be a bench on the front edge, which allows to seat comfortably 4 guests.

The dining table beside gets complete with 4 seats, offering a perfect dinning spot for 8 guests.

Deckhouse's bay window features two countertops with 2 planchas, 2 sinks, fridge, freezer & icemaker, as well as storages. Everything you need for a delightful al fresco moment !

On either side of the superstructure are two alleyways that bring you to the bow.

The bow boasts another huge sundeck and a Portuguese deck for 4 guests.

Access to crew quarters is from the bow.

All the Teak decks are in great condition and very well maintained.

Interior

Deckhouse's superstructure is in Kevlar fiber and has many openings which offers a bathed in light living room.

Warm Oak wood panels create a harmonious ambiance with the parquet floor and the bright fabrics used.

Two big sofas are facing each other all along the living space, completed by matching armchairs & ottomans, as well as coffee tables.

Following the saloon and completing the main deck, the cockpit bridge boasts a range of on point navigation equipment on an elegant grey leather dashboard.

Direct and indirect lightings sublimate the inside spaces.

Access to galley, laundry and machinery is from a staircase on your left when you enter the saloon.

Access to guest areas is from the cockpit bridge, through a luminous staircase that serves all the 4 cabins on the lower deck.

Lower Deck

Exterior

The stern features a teak wood swimming platform from which you access the garage under the sunpad as well as the sea through a swim ladder.

The garage fits a Williams 450 and many inflatable toys.

Interior – guests' area

Noé offers a family-friendly layout with accommodation for eight guests in four lower deck cabins.

There is a full-beam owner's suite, with a large bathroom with double washbasins, a spacious shower, and toilets. An office space and dressing room complete the suite.

At the bow, a VIP stateroom welcomes two guests and offers a head and separated toilet.

Two double cabins complete the arrangement, both ensuite.

All cabins feature the same style you find on the main deck : oak wood paneling and matching parquet, warm white fabrics, direct and indirect lightings.

Each cabin has a modern wallpaper in grey shades that gives every space a very special character and an immediate feeling of luxury.

Interior – crew quarters

Noé has been designed for a private use with a minimum crew.

Crew quarters are located at the bow, access is from the outside on the main deck.

2 pullman berths

1 shared wet head

Interior – galley & machinery

Noé has been configured on order by her Owner for his private use. The crew quarters that are normally placed beside the galley are converted into a laundry space.

Seakeeper stabilizer has been implemented as well in the galley, under the staircase from the main deck.

The galley is indeed very spacious and features professional kitchen equipment by Miele.

Access to the machinery is from the galley.

All the machinery has been cautiously followed by her experienced Owner and his one and only Captain & crew member. Both are passionate and have spent many hours maintaining all the machinery to a state of art.

TECHNICAL DATAS

Main characteristics

Overall length : 28.60 meters

Hull length : 26.60 meters

Beam overall : 6.5 meters

Draught : 1.30 meters

Light displacement : 67 tons

Fuel capacity : 8500 liters

Fresh water capacity : 2000 liters

Black water capacity : 800 liters

Grey water capacity : 800 liters

Classification

Conformity to Bureau Veritas NR 500 regulations, July 2006 edition

Propulsion

2 Diesel Engines MTU 16V2000 M93 with 1066 hours each. (04/2022)

Performances

Cruising speed : 28 knots

Maximum speed : 34 knots

Generators

1 Kohler 27 Kw with 2657 hours. (04/2022)

1 Kohler 17 Kw with 1392 hours. (04/2022)

Equipment

Zero Speed stabilizer : SEAKEEPER

Autopilot SIMRAD

VHF : FURUNO

GPS : FURUNO

Navnet : FURUNO

Night vision : FLIR

Axiom / Raymarine

Fire detection & alarm system

Radar : FURUNO

CCTV x3 : 1 in the engine room, 2 at the back (aft deck & rear platform)

Generated On 5/11/2025 2:02 PM by WORLD YACHT GROUP SVC Account

Watermaker : Aqua Whisper

Galley equipment

Miele oven

Miele microwave

Miele ceramic hob

Miele tower fridge

Miele tower freezer

Miele dishwasher

Miele washing machine

Inox sink

Inox faucets

Disclaimer

All speeds, measurements, capacities, consumptions, etc. may be approximate or estimated. Specifications provided for information only. Data was obtained from sources believed to be reliable and is not guaranteed by owner or brokers. Buyer assumes the responsibility to ascertain the correctness of all data contained herein and otherwise provided and must instruct his agent and surveyors to confirm all details for accuracy prior to purchase. Subject to prior sale, price and inventory change, or withdrawal from market without notice.

Noé - Guy COUACH 2800 Open - 2013



Top speed of 34 Knots



Generated On 5/11/2025 2:02 PM by WORLD YACHT GROUP SVC Account

WORLD YACHT GROUP USA

WORLD YACHT GROUP SVC

NOE

Account

**info160920210306@world-yacht-
group.com**

worldyachtgroup.com

Page 9 of 19

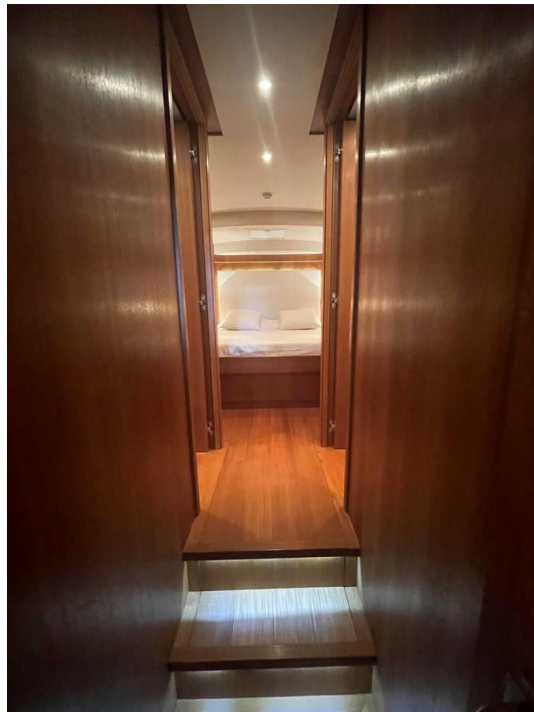
Main Deck modern interior



Williams 4.5 T/T



Lower Deck hallway, serving VIP's head (on the left) and toilets (on the right)



VIP stateroom (at the bow)



Double cabin #1



Double cabin's head #1



Double cabin #2



VIP's head



Master Suite



Master Suite



Master Suite



Master's head



Master's shower



Galley



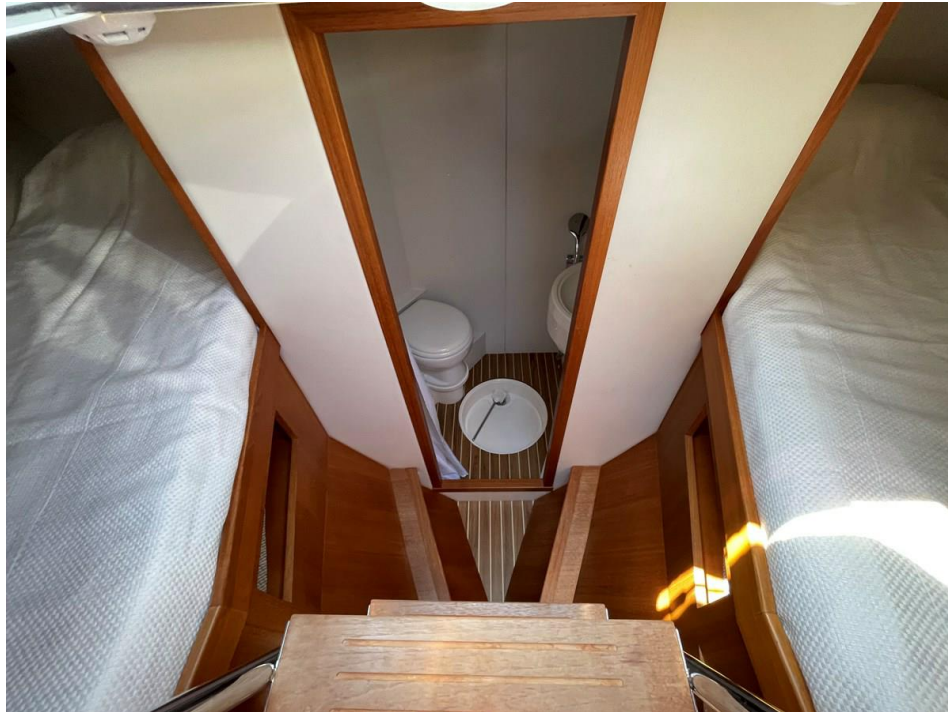
Galley / laundry



Crew quarters



Crew quarters



Exterior alleyway



Exterior layout

