



world yacht group

Experts in luxury yachts

No Name



LOA:	124' 1" (37.82m)	Delivery/Model	2025
Beam:	25' (7.6m)	Year:	
Max Draft:	7' (2.11m)	Model:	Tri-Deck Motoryacht
Clearance:	33' 6" (10.2m)	Builder:	PRESIDENT YACHTS
Tonnage:	298.00	Type:	Motor Yacht
Speed:	12 Knots 16 Knots	Staterooms:	5
Location:	Fort Lauderdale, Florida United States	Fuel Cap:	5500 Gal
VAT Paid:		Water Cap:	1500 Gal
		Engines:	2x, Caterpillar, C32, 1600 HP
		Price:	\$10,999,400 USD

Generated On 5/11/2025 4:09 AM by WORLD YACHT GROUP SVC Account

WORLD YACHT GROUP USA

WORLD YACHT GROUP SVC

No Name

Account

**info160920210306@world-yacht-
group.com**

worldyachtgroup.com

Page 1 of 16

Additional Specifications For No Name:

LOA:	124' 1" (37.82m)	Delivery/Model	2025
Beam:	25' (7.6m)	Year:	
Min Draft:	6' 7" (2m)	Year Built:	2025
Max Draft:	7' (2.11m)	Builder:	PRESIDENT YACHTS
Hull Material:	Fiberglass	Model:	Tri-Deck Motoryacht
Hull Config:	Monohull	Type:	Motor Yacht
Hull Designer:	President Yachts	Engines:	1600 HP,Twin, Inboard, Diesel, Caterpillar, C32,
Deck Material:	Teak	Staterooms:	5
Tonnage:	298.00	Sleeps:	10
Range At Cruise	1000	Heads:	6
Speed:		Crew Quarters:	3
Range At Max	800	Crew Berths:	6
Speed:		Captain Cabin:	Yes
Speed:	Cruising 12 Knots	Classifications:	
	Max 16 Knots	MCA: ISM:	
Int Designer:	President Yachts		
Fuel Capacity:	5500 Gal		
Water Capacity:	1500 Gal		
Holding Tank:	1000 Gal		
Location:	Fort Lauderdale, Florida		
	United States		
Price:	\$10,999,400 USD		

Description

For over 50 years and over 1300 vessels delivered President Yachts has been exceeding client's expectations in quality, design, and EXCELLENT VALUE.

The 124' Tri Deck is available with 5 and 6 stateroom layouts and many layout and feature options to fit each client desires.

All new President Tri Decks will be built and certified to strict RINA Classification rules.

Main Dimensions

Length overall (including swim platform) - 123' – 6" (37.64M)

Max. beam - 25' – 8" (7.82M)

Length of water line - 103' – 5" (31.46M)

Draft (water line to propeller tip) - 6' – 5" (1.95M)

Displacement (full load) - 327,800 lbs. (149 Tons)

Fuel Tank capacity - 7,000 US. Gals. (26,495 Lts)

Fresh water tank Capacity - 800 US. Gals (3,028 Lts)

Standard Power

1. Twin Caterpillar® C-32 Acert, diesel engines, rating 1,825 MHP

2. Transmission gear box "ZF" 3050A, gear ratio: 2.52/1

3. Northern Lights® generators with sound shield 2 set (M50TI3L rating 50KW/60hz).

4. Cruisair® Air conditioning chilled water system, Reverse cycle for cooling & heating 180,000 btu, condensing units in engine room and cooling units for cabins

5. Aqualoy® 22HS Propeller shafts, 4" diameter

6. 5 Blade NiBrAl Propellers

7. ABT Trac 370/16X' STAR (zero speed) stabilizer system

8. ABT 16"-45HP Hydraulic bow thruster

9. ABT 16"-45HP Hydraulic stern thruster

Hull and Superstructure

1. Aroway® LR (Lloyd's Register) approval white color gelcoat on hull

2. Aroway® LR (Lloyd's Register) approval white color gelcoat on superstructure

3. Stitched multi-axial reinforced single skin hull bottom

4. USA Reichhold® Hydrex vinyl ester resin for hull skin-coats

5. USA ATC® Corecell PVC foam sandwich, vacuum bag lamination construction

6. Transverse and longitudinal fiberglass stringers hull bottom reinforcement

7. Hull and deck joint with fiberglass laminate reinforcement

8. The interior of hull bottom painted out with white PU paint protection

9. USA International® Epoxy osmosis protect primer

10. USA International® Bottom paint anti-fouling, navy blue color

11. Hull boot stripe, red color

12. S/S frame portholes with storm cover

13. Large fixed fashion window on hull side

14. Bulbous bow and keel under water line

Electrical Equipment

1. Glendenning® CM-8/24V.(100AMP) cable master shore power cable winder (2)
2. Yellow vinyl jacketed shore power cable, 90 feet (2)
3. Charles 93-ISOBOOST100-A, ISOboost isolator 100A (2)
4. Engine room blowers 120VAC, (4)
5. Water heater w/heat exchanger "Torrid" 30 US. gals X 1, 40 US. gals X 1
6. AC and DC circuit control breakers
7. Maretron® monitoring system with 19" monitor touch screen NMEA2000 system
8. Navigation light (5)
9. Triple trump air horn
10. Sealed maintenance free battery 255AH, (8) with fiberglass. battery boxes for service
11. Sealed maintenance free battery 210AH, (4) with fiberglass battery boxes for engines
12. Sealed maintenance free battery 105AH, (4) with fiberglass battery boxes for generators and 12VDC service
13. Automatic bilge pump 24VDC (5) with automatic float switches & indicating lights and alarm system
14. Bonding system with zinc anode on transom
15. "VICTRON" #CENTAUR, 24VDC 100A or equivalent battery charger
16. "VICTRON" #CENTAUR, 12VDC 40A or equivalent battery charger
17. "VICTRON" QUATTRO INVERTER 24V/5,000W
18. Intercom (4)
19. Stereo wiring w/exterior speakers (12)
20. Ritchie® SS5000, flush mount compass (2)
21. Color-coded wiring system
22. On/off switch for engines & generator
23. Emergency parallel switch between engines and service's battery bank
24. EXALTO® wipers (3)
25. CCTV in aft deck, swim platform, engine room and side deck. Screen on Nav. display of flybridge and pilothouse
26. Engine room light 24VDC (6) and 120AC fluorescent light (7)
27. ACR® RCL-300A remote control searchlight

Mechanical Equipment

1. Racor®, 75/1000 MAX, dual fuel filter for engines
2. Racor®, 75/900MAX, dual fuel filter for generator
3. Under water exhaust system with idle by pass mufflers
4. Hydraulic power steering system
5. Manual backup for steering (emergency steering rod on rudder post)
6. Sea water strainer (2)
7. Bronze thru-hull fitting
8. Hot and cold-water pressure system
9. Stainless steel fresh water tanks w/gauge (3)
10. Bluewater® LGD 950-2, 220VAC water maker 950 gal/day
11. Headhunter® TW-HMX-6001 Sewage water treatment plant
12. Stainless steel shaft strut
13. Dual shore water connection
14. Bilge water level detectors (4)
15. Electronic dual level engine controls
16. Blower for each head
17. Aluminum fuel tank
18. Fiberglass holding tank with lever indicators (2)
19. Macerator pumps (2)
20. Y valve for holding tanks
21. Sump tank with pump 3 set
22. Fresh water pressure system with pumps (3)
23. Engine room fire detector AQUALARM #204 series
24. Reverso® GP806, oil change system for main engines and generators
25. Fireboy® MA2-3000-FM200, fire extinguishing system with manual and automatic discharge
26. Stainless steel engine footing

Generated On 5/11/2025 4:09 AM by WORLD YACHT GROUP SVC Account

WORLD YACHT GROUP USA

WORLD YACHT GROUP SVC

No Name

Account

**info160920210306@world-yacht-
group.com
worldyachtgroup.com**

Page 4 of 16

Flybridge

1. Radar arch and hard top with 24VDC light
2. Tinted acrylic sky light on the flybridge hardtop
3. A radar mast on the fly bridge hardtop
4. A full size electric. BBQ "Electri-chef" #4400-EC-336-IM-24 on stbd. side w/" U-LINE" ice maker/refrigerator or equivalent
5. Tinted venture windshield with grab rail
6. FRP non-skid deck
7. Molded instrument console w/complete instrumentation and s/s cover
8. Glendinning® electronic dual level engine controls
9. Steering wheel S/S 26"
10. Pompanette single hi-lo pilot chairs (2)
11. L-shape bench seats with vinyl cushions and storage beneath on port side w/a fixed L-shape fiberglass table
12. A large double Corian counter wet bar and storage beneath on stbd. side.
13. Hot tub (Jacuzzi) on fly bridge port side
14. A full size sun-bathe bed w/mattress on fly bridge port side
15. 5 S/S bar swivel stool on F/B
16. Waterproof speakers (2)
17. Intercom (1)
18. AC waterproof receptacle (1)
19. Courtesy lights (8)
20. S/S removable railing
21. Hydraulic 2500 lbs. load davit with s/s support post under to P/H deck
22. Stairs down to pilot house

Pilothouse

1. Maple wood cabin sole
2. Lower station with complete instrumentation
3. Wooden/stainless steel steering wheel 24"
4. Pompanette single hi-lo pilot chairs (3)
5. L-settee with table
6. Lockers/cabinet
7. 24VDC recess lights (12)
8. AC outlets (3)
9. Stair steps down to salon w/railing
10. Air conditioning system
11. Port & Stbd side pantograph door
12. A day head with electric toilet, mirror, sink and medicine cabinet
13. A captain room w/single berth (fold up to get out of way when cabin is not used), office table and hanging locker

VIP Stateroom, Upper Skylounge

1. Stainless steel automatic access door to P/H rear deck
2. Walk around king size berth with storage under w/a bench in front
3. Night tables with two drawers on both side of berth
4. Large hanging locker
5. Private door to head
6. 24VDC lights (4)
7. AC lights (10)
8. AC receptacles (4)
9. Storage counter on stbd. side
10. Hunter Douglas style blind shape curtain for windows and curtain for access door
11. A 42" LED TV w/hi-lo electric lifter concealed in the counter w/DVD player
12. Air conditioning
13. Maple wood flooring

VIP Head, Upper Skylounge

1. Medicine cabinet with mirror
2. Headhunter® super bowl toilet (1)
3. Tile cabin sole
4. 24VDC lights (6)
5. AC receptacles (2)
6. Granite counter top
7. Basin with single lever faucet
8. Stall glass door shower with tile floor

Pilothouse Deck, Aft

1. Fiberglass integrated staircase to F/B
2. Teak deck floor
3. Automatic stainless steel glass door to upper master room
4. Stainless steel stanchion and railing
5. Teak hi-lo table 5 feet diameter w/4 teak chairs
6. Two stainless steel poles $\varphi 5\frac{1}{2}$ "
7. Exterior speakers (2)
8. Flag pole socket (1).
9. Teak ensign flag 6 ft. (1)

Main Deck, Forward and Side

1. Raised bow and wide-beam hull
2. Twin S/S navy anchor (230 lbs. each)
3. S/S bow protected plate following the bow till about 1' below water line and down sides
4. Twin stem head rollers with automatic anchor launch facility
5. 5/8" HT chain, 400ft (2)
6. Two mooring bollards forward with rope fairleads
7. Rub rail with 2" wide solid stainless-steel trim
8. S/S hawse pipe with spring cleats (8)
9. Chain locker with fiberglass hatch (1)
10. Fiberglass windows frame with tempered seamless glasses
11. Fiberglass bulwark door (2) on both side deck
12. Fresh water wash down faucet (1)
13. Raw water wash down faucet (1)
14. Flag pole socket (1)
15. Teak ensign flag 30" length (1)
16. Teak deck floor
17. 316 S/S stanchions & handrails
18. Maxwell® VWC 4500HYD windlass (2) with hand held control & chain counter
19. Fore deck storage locker for fenders and ropes

Main Deck Aft, Cockpit, and Swim Platform

1. Teak deck floor
2. Extend hard top over deck with stainless steel pipe supports $\psi 5\frac{1}{2}$ "
3. S/S mooring cleat (2)
4. S/S hawse pipe with roller (2)
5. Maxwell® VC2200 vertical electric winches (2)
6. Automatic stainless steel frame salon access sliding door
7. Fresh water wash down faucet (1)
8. Raw water wash down faucet (1)
9. Transom shower hot & cold water
10. Two stairs on both sides down to aft body cockpit w/two S/S hinge doors.
11. A set of bulwarks between cockpit and swim platform with storage door on the inner wall
12. Teak stairs from aft deck to aft pilot house deck
13. AC GFCI waterproof receptacle (1)
14. Hard top lights (10)
15. Courtesy lights 24VDC (6)
16. Fiberglass bulwark door (2) on aft deck both sides
17. 316 S/S stanchions & handrails on the bulwark
18. Fiberglass bench with vinyl cushions on back side
19. Access door to crew quarter and engine room
20. A lift up cabinet down to crew quarter and storage locker on port side
21. Curved double counter granite bench bar top wet bar with round sink/faucet and locker under side
22. Wet bar with storage lockers and "U-LINE refrigerator/ice maker on stbd. side
23. Three bar stools
24. A 32" LED TV on the stbd. fwd. corner
25. Oval teak table w/two s/s fixed stands and 8 chairs
26. Teak deck on swim platform and cockpit
27. Rub rail with 2" wide solid stainless-steel trim
28. Five S/S safety square shape guard railings on the aft edge of swim platform

Interior

1. 9" spring mattress and standard fabric
2. Teak or cherry wood interior wall covering with satin finishing
3. FRP non-skid cabin sole for crew quarter
4. Maple wood sheet cabin sole for salon, galley, dinette, and lower staterooms
5. Vinyl on ceiling
6. Hunter Douglas style blind shape curtains

Owner's Stateroom, Main Deck

1. Custom king size berth with innerspring mattress and upholstered headboard
2. Night table with storage on both side of berth
3. Recessed room lights, wall lights, indirect rope accent lighting under berth
4. Carpeting floor
5. Front curved lockers and angled glass windows over the lockers
6. Two rows of large walk-through wardrobe with light, stainless closet rod and cedar shelf behind the custom king size berth
7. Curved double chair and a table on port and starboard side
8. Storage lockers on port and starboard side
9. 42" LED TV with lifter concealed in front ceiling
10. A private office desk and chair on stbd.

Owner's Head, Main Deck

1. Granite counter top and double ceramic sink with faucet
2. Medicine cabinet with mirror above double ceramic sink counter
3. A vanity counter with drawer on both sides and chair
4. Headhunter® royal flush toilet (1)
5. Fixed in Jacuzzi bath tub
6. Stall shower with seat and tempered glass doors
7. Ventilation fans
8. Locker or drawers under sink counter
9. 120V AC receptacles
10. Tile marble soles
11. Bath accessories, towel rack, towel ring, toilet paper holder
12. 24VDC LED lighting

Galley

1. Maple wood stripe sheet cabin sole
2. Electric ceramic hob "GE" #JP950WKWWor equivalent
3. Oven "GE" #ZEK938SFSS or equivalent
4. Side by side refrigerator "GE" #ZISS480DRSSor equivalent
5. Dish washer "GE" #ZBD0710KSS or equivalent
6. Trash compactor "Broan" #15SS or equivalent
7. Disposal "INSINKERATOR" #PROSS-4 or equivalent
8. Wine cooler "U-LINE" #2115WC or equivalent
9. Stainless steel triple sinks
10. Single lever kitchen faucet
11. 24VDC lights
12. AC receptacles (4)
13. Pantry cabinet and drawers
14. Granite counter top
15. Air conditioning

Salon

1. Maple wood cabin sole
2. Stereo and DVD/DivX player cabinet in entertainment center
3. 24V DC lights
4. AC receptacles (6)
5. Salon "U" settee w/two lamp counter & table (1)
6. Dinette table with chairs (10)
7. Art cabinet in fwd. side w/storage underneath
8. 50" LED TV with remote electric lifter w/DVD/DivX player
9. Double curved type granite counter wet bar with sink, faucet, storage and "U-LINE" ice maker/refrigerator
10. Automatic stainless steel frame salon access sliding door
11. Air conditioning 32,000 BTU
12. Wood stairs up to pilot house w/railing

Day Head, Salon

1. Medicine cabinet w/mirror (1)
2. Headhunter® super bowl toilet
3. Marble tile cabin sole
4. Art corner shelves
5. 24VDC lights
6. AC receptacle (1)
7. Granite counter top
8. Basin with faucet

VIP Stateroom, Forward

1. Double berth w/storage under
2. Hanging lockers (3)
3. Vanity counter with drawers and chair on stbd aft side
4. S/S frame opening portlights (2) w/Hunter Douglas style blind shape curtains
5. Private door to head
6. A 26" LED TV on the wall
7. Maple wood sheet floor
8. 24V DC lights (8)
9. AC receptacles (2)
10. Drawers
11. Air conditioning

VIP Head, Forward

1. Medicine cabinet w/mirror (1)
2. Headhunter® super bowl toilet
3. Marble tile cabin sole
4. 24V DC lights (6)
5. AC receptacle (1)
6. Granite counter top
7. Basin with faucet
8. Stall shower glass door with seat and marble tile floor

Lower Lobby and Laundry Room

1. Maple wood floor outside the laundry room on center aisleway
2. Maple wood floor on the laundry room floor
3. Wood stairs with railing up to salon
4. 24V DC lights (6)
5. "GE" #WCVH6260FWWasher & # DCVH515EFWWdryer or equivalent under the Corian work counter in laundry room
6. Drawers and storage locker under the Corian work counter
7. Air conditioning

Master Stateroom, Main Deck

1. Double open doors from lower lobby to master room
2. Walk around king size berth with underneath storage
3. Night tables with two drawers on both side of berth
4. Walk-in dressing room w/locker and shelves inside and two S/S opening portlights
5. Private door to head
6. A 42" LED TV on the wall w/DVD/DivX player
7. 24V DC lights (14)
8. AC receptacles (4)
9. Drawers counter of both side
10. Large new type side window w S/S frame opening portlights (4) on both sides
11. Curtain for both side port holes
12. Seat w/cushion on stbd. side
13. Air conditioning
14. Maple wood floor

Master Head, Main Deck

1. Medicine cabinet with mirror
2. Mirror integrated with granite wall
3. Headhunter® super bowl toilet
4. Marble tile cabin sole
5. S/S opening portlight (1)
6. 24V DC lights
7. AC receptacles (4)
8. Granite counter top w/basin and faucet (2)
9. Granite vanity counter w/side drawers and mirror in front
10. Glass stall shower with seat and marble tile floor
11. Hot tub on stbd. side

VIP Stateroom, Starboard Aft

1. Twin berth with storage under
2. Night table between twin berth w/drawer underneath
3. Hanging locker (1)
4. S/S frame opening portlight (2)
5. Private door to head
6. A 26" LED TV on the wall
7. 24VDC lighting
8. AC receptacles (2)
9. Air conditioning

VIP Head, Starboard Aft

1. Medicine cabinet w/mirror (1)
2. Headhunter® super bowl toilet.
3. Marble tile cabin sole
4. 24VDC lighting
5. AC receptacle (1)
6. Granite counter top
7. Basin with faucet
8. Stall shower glass door with marble tile floor

VIP Stateroom, Port Aft

1. Double berth with storage under
2. Night table on both sides of berth w/drawer underneath
3. Hanging locker (1)
4. S/S frame opening portlight (2)
5. Private door to head
6. A 26" LED TV on the wall
7. 24V DC lighting
8. AC receptacles (2)
9. Air conditioning

VIP Head, Port Aft

1. Medicine cabinet w/mirror (1)
2. Headhunter® super bowl toilet.
3. Marble tile cabin sole
4. 24VDC lighting
5. AC receptacle (1)
6. Granite counter top
7. Basin with faucet
8. Stall shower glass door with marble tile floor

Crew Cabin, Starboard

1. Upper & lower berth
2. Aft crew room have bunks fold into wall
3. FRP non-skid cabin sole
4. Hanging locker (1)
5. Storage under berth
6. Private door to head
7. S/S frame opening portlight
8. 24VDC lighting
9. AC outlets (2)
10. Air conditioning

Crew Head, Starboard

1. Headhunter® royal flush toilet
2. FRP non-skid cabin sole
3. Stall shower glass door with fiberglass non-skid floor
4. 24VDC lighting
5. AC receptacle (1)
6. Granite counter top
7. Basin and faucet
8. Medicine cabinet w/mirror
9. Crew bathroom on starboard side make access from hallway along with from room

Crew Cabin, Port

1. Double berth with storage under
2. FRP non-skid cabin sole
3. Hanging locker (1) w/side desk
4. Private door to head
5. S/S frame opening portlight
6. 24V DC lighting
7. AC outlet (1)
8. Air conditioning
9. Moving from the cockpit into the aft crew area; make the stairs hinge-up with an opening under the stairway into the lazarette to provide access to additional storage

Crew Head, Port

1. Headhunter® royal flush toilet
2. FRP non-skid cabin sole
3. Stall shower glass door with fiberglass non-skid floor
4. 24VDC lighting
5. AC receptacle (1)
6. Granite counter top
7. Basin and faucet
8. Medicine cabinet w/mirror

Utility Room

1. Wood stairs up to aft deck
2. FRP non-skid floor
3. GE® 24" #GFQ14ESSNWW Front Load combined washer/dryer (or equivalent) on port side
4. Access door from crew quarter to utility room
5. AC receptacles (2)
6. Lower counter lockers
7. Lift up cabinet to aft deck locker

Miscellaneous

1. Sea-Fire Marine USCG portable marine fire extinguisher 10 lbs./unit UL rating, 1A:10B:C (total 8 units all around)
2. Autopilot "Simrad" AP28
3. "Furuno" Navigation equipment (or equivalent), including following
 - a). FURUNO NavNet 3D Multi-Function Display - Model MFDBB complete for 12-24VDC 2 SETS
 - b). FURUNO NavNet 3D 12.1" LCD Multi-Function Display - Model MFD12 complete for 12-24VDC 2 SETS
 - c). FURUNO NavNet 3D Radar Sensor (6FT /12 kw) - Model DRS12A 1 SET
 - d). FURUNO NavNet 3D Radar Sensor (4FT /6 kw) - Model DRS6A 1 SET
 - e). FURUNO NAVNET 3D Satellite Compass - Model:SC-30 1 SET
 - f). FURUNO NAVNET 3D Weather station - Model:WS-200 1 SET
 - g). FURUNO BBFF1 Network Fish Finder - Model:DFF1 complete for 24VDC 1 SET
 - h). FURUNO NAVNET 3D SMART SENSOR - FI50DSW 1 SET
 - i). FURUNO NavNet 3D Dedicated Inter-switch Hub - Model HUB-101 complete for 12-24VDC operation 1 SET
 - j). FURUNO NAVTEX RECEIVER - Model NX-300 complete for 24VDC operation 1 SET
 - k). FURUNO Automatic Identification System (AIS) - Model FA-150 Complete for 12-24VDC 1 SET
 - l). FURUNO GPS NAVIGATOR - Model GP-33 1 SET
 - m). FURUNO MARINE VHF TELEPHONE - Model FM-8800S Complete for 24VDC 1 SET
 - n). FURUNO MARINE VHF TELEPHONE - Model FM-8800S Complete for 24VDC 1SET
 - o). FURUNO 30W LOUD HAILER - Model: LH3000 COMPLETE FOR 12VDC 1SET





Generated On 5/11/2025 4:09 AM by WORLD YACHT GROUP SVC Account

WORLD YACHT GROUP USA

WORLD YACHT GROUP SVC

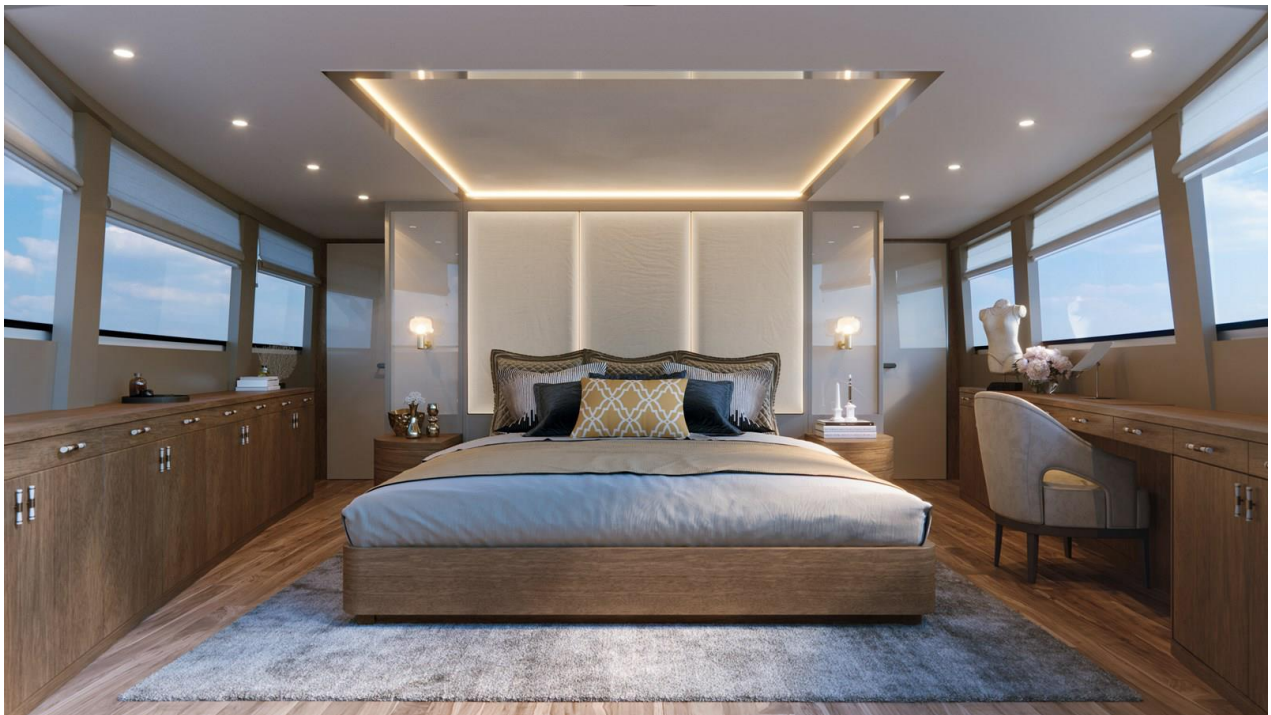
No Name

Account

**info160920210306@world-yacht-
group.com**

worldyachtgroup.com

Page 14 of 16



Generated On 5/11/2025 4:09 AM by WORLD YACHT GROUP SVC Account

WORLD YACHT GROUP USA

WORLD YACHT GROUP SVC

No Name

Account

**info160920210306@world-yacht-
group.com**

worldyachtgroup.com

Page 15 of 16



Generated On 5/11/2025 4:09 AM by WORLD YACHT GROUP SVC Account

WORLD YACHT GROUP USA

WORLD YACHT GROUP SVC

No Name

Account

**info160920210306@world-yacht-
group.com**

Page 16 of 16

worldyachtgroup.com