



<b>Type</b>	<b>Motor Yacht Sky Lounge</b>	<b>Classification</b>	--
<b>Top</b>	<b>Enclosed Pilothouse</b>	<b>Class Type</b>	--
<b>Model</b>	<b>Skyounge with Hydraulic Platform</b>	<b>Builder</b>	<b>JOHNSON</b>
<b>Manuf. Year</b>	<b>2026</b>	<b>Naval Architect</b>	<b>Dixon Yacht Design</b>
<b>Refit Year</b>	--	<b>Interior Design</b>	<b>Johnson Yachts</b>
<b>LOA</b>	<b>83' (25.3m)</b>	<b>Hull</b>	<b>Fiberglass</b>
<b>Beam</b>	<b>20' 9" (6.32m)</b>	<b>Deck</b>	<b>Teak</b>
<b>Draft Min/Max</b>	<b>6' (1.83m) / 6' 1" (1.85m)</b>	<b>Engines</b>	<b>2x, MAN, D2842 LE433, 1550 HP</b>
<b>GRT</b>	--	<b>Max Speed</b>	<b>25 Knots</b>
<b>Fuel</b>	<b>1600 Gal</b>	<b>Cruise Speed</b>	--
<b>Water</b>	<b>350 Gal</b>	<b>Range</b>	--
<b>Flag</b>	--	<b>Accommodations</b>	<b>8 in 4 strms</b>

**ASKING PRICE: \$7,200,000 USD**

**Salon Looking Aft**



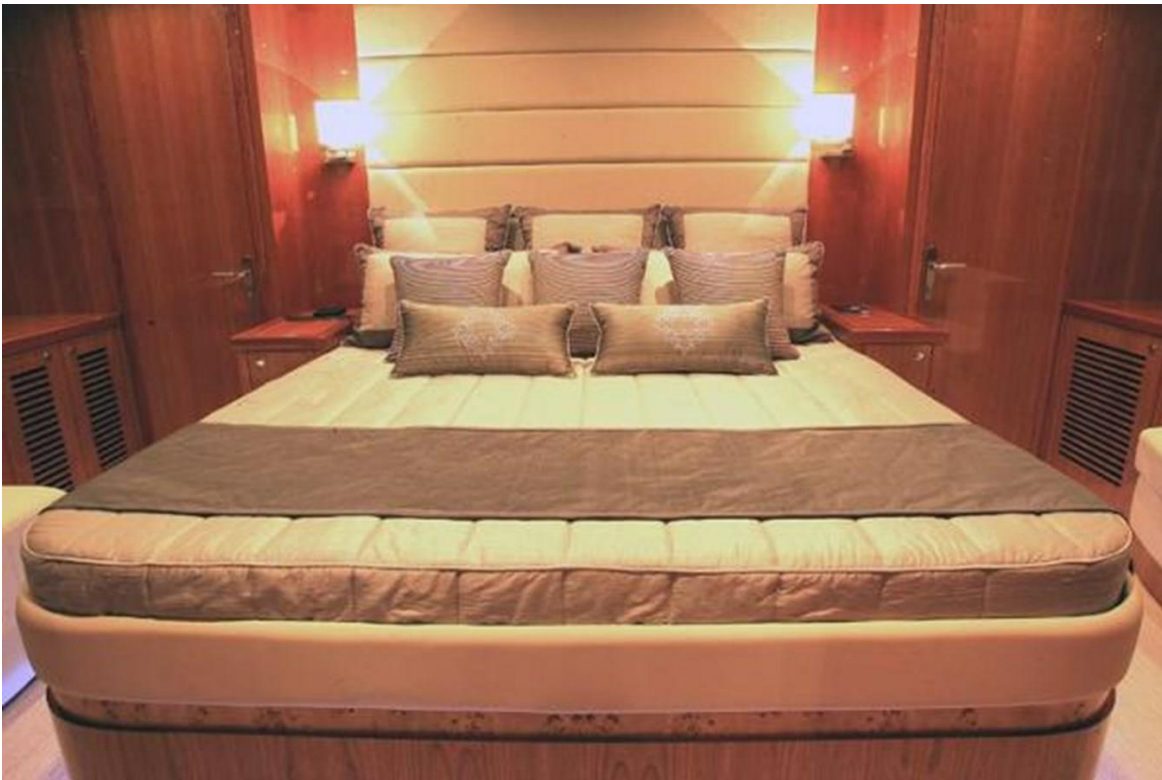
**Aft Galley Option**



### Forward Dining Option



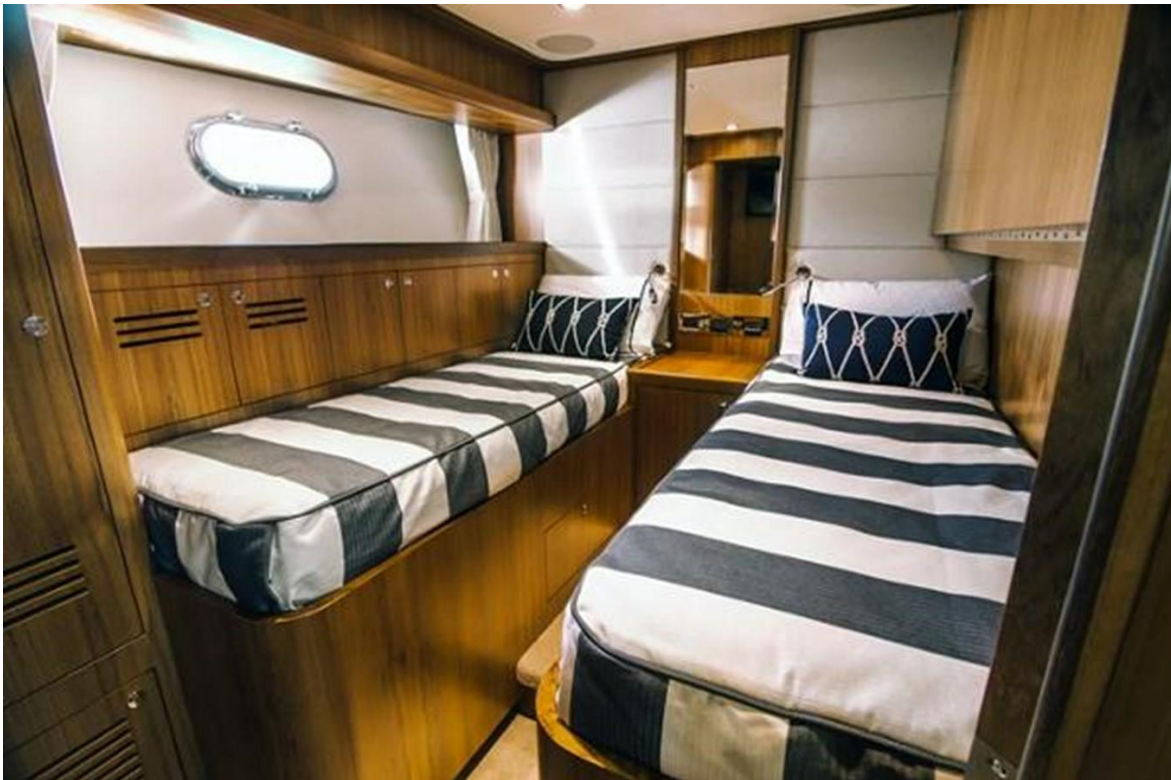
### Master Stateroom



## Master Stateroom



## Port Side Midship Cabin



### Starboard Midship Cabin



### Companion Foyer



## Skylounge



## Aft Deck



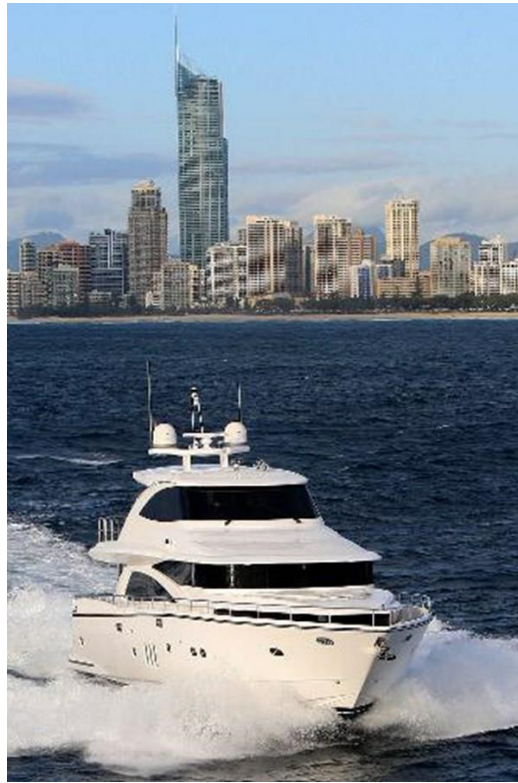
### Aft Deck



### At Sea



**At Sea**



**Night Shot**



## Engine Room







# I. HULL & DECK- EXTERIOR GENERAL:

1. MAIN DECK-TEAK 14MM
2. STAINLESS STEEL AND NYLAC INTEGRAL ROLLERS & CHAIN STOPPER FOR ANCHOR CHAIN WITH GROOVE MACHINED INTO ROLLER
3. 250 FEET GALVANIZED CHAIN (3/8")
4. MAXWELL HYDRAULIC WINDLASS VWC4000 (SINGLE)
5. STAINLESS STEEL 120 LB ANCHOR (SINGLE)
6. FRESH WATER ANCHOR CHAIN WASHDOWN PLUS OUTLET ON FOREDECK FOR HOSE ATTACHMENT
7. HEAVY DUTY 316# S/S HANDRAIL & STANCHIONS IN ELLIPTICAL S/S
8. HEAVY DUTY 316# S/S CLEATS AND FAIRLEADS WITH 2 EXTRA POP UP CLEATS ON AFT PLATFORM
9. BLACK TEMPERED SAFETY GLASS LAMINATED 5MM+ 5MM GLASS
10. STAINLESS STEEL SALOON PENUMATIC SALOON SLIDING DOOR WITH PUSH BUTTON AND SAFETY SENSORS
11. PANTOGRAPH STYLE SIDE DOOR IN DECK HOUSE (PORT ONLY)
12. MANSHIP ELLIPTICAL STAINLESS STEEL PORT LIGHTS
13. S/S RUB RAIL W/RUBBER INSERT AROUND HULL & DECK JOINT
14. STERN CAPSTAN MAXWELL VC1500 24V x 2
15. AFT DECK SEATING W/ CUSHIONS IN SUNBRELLA OUTDOOR FABRIC AND REMOVABLE COVER
16. AFT DECK TABLE WITH PROTECTIVE COVER
17. LOW LEVEL LED COURTESY LIGHTS ON SIDE DECK

18. LOW LEVEL LED COURTESY LIGHTS ON AFT DECK

19. STAIRS TO FLYBRIDGE WITH TEAK LAID TREADS

20. LARGE TEAK INLAY SWIM PLATFORM WITH CURVED STAIRWAY TO AFT DECK

21. HOT & COLD SWIM SHOWER

22. S/S SWIM LADDER

23. LAZARETTE STORAGE FOR FENDERS

24. ONE SET OF ENGINE AND THRUSTER CONTROLS FITTED TO STBD OR PORT AFT COAMING

25. HYDRAULIC SWIMMING PLATFORM (BESENZONI PL850 OR EQUIVALENT W/ 1873 LBS. LIFTING CAPACITY

## II. UNDERWATER GEAR

1. 5 BLADE BRONZE PROPELLERS x 2

2. BRONZE P-BRACKETS x 2

3. S/S AQUATECH 22HS SHAFTS 3 ½" DIAMETER x 2

4. SHAFT SEAL AND SHAFT LOGS TIDES MARINE SHAFT LIP SEAL GLANDS 3 ½" x 5 ½" AND DURAMAX MARINE CUTLASS BEARINGS

5. HIGH PERFORMANCE S/S RUDDERS USING AQUATECH 22 STAINLESS STEEL STOCKS WITH TIDES MARINE SHAFT LIP SEAL GLANDS AND BRONZE BEARING

6. ANTI-FOULING BOTTOM PAINT

SEA HAWK PRIMER SYSTEMS TUFF STUFF 1284 GREY OR 1285 WHITE

SEA HAWK SELF-POLISHING COPOLYMER ANTIFOULING CUKOTE

3445 BLACK OR 3430 DARK BLUE

7. BOOT TOP STRIPE SIZE 3" COLOR: BLACK, BLUE OR RED

8. FULL CATHODIC BONDING SYSTEM TO ZINC ANODES

9. SEAWATER STRAINERS FOR ENGINES, GENSET AND AIR-CONDITIONER

10. SEACOCKS ON ALL UNDERWATER FITTINGS

11. HYDRAULIC BOW THRUSTER

12. HYDRAULIC STERN THRUSTER

13. "AT REST" STABILIZERS

14. UNDERWATER EXHAUST SYSTEM WITH MUFFLERS AND BYPASS

15. HYDRAULIC STEERING BY HYNAUTIC MODEL PSHC5803 WITH POWER STEERING

### III. SKYLOUNGE

1. TEAK FLOOR WITH 14 MM TEAK AND HOLLY WITH MATT FINISH

2. INSTRUMENT CONSOLE UPHOLSTERED WITH LEATHER

3. ACCESS HATCH AND STAIRS TO SALOON IN S/S WITH TEAK TREADS

4. HIGH QUALITY BUILT IN LEATHER COUCH & SMALLER COFFEE TABLE

5. ICE MAKER & REFRIGERATOR COMBO UNIT

6. HYDRAULIC STEERING HYNAUTIC PSHC5803

7. ENGINE CONTROL AND INSTRUMENTATION

8. MAGNETIC COMPASS

9. WIPERS EXALTO MODEL 250BS 24 V 950 MM ARM LENGTH WIPERS x 2

10. CHOICE OF (I) GARMIN OR (II) RAYMARINE NAVIGATION SYSTEM

I. GARMIN

GPSMAP® 8617 17" FULLY-INTEGRATED MULTI-TOUCH MFD x 2

GMI 20 MARINE INSTRUMENT DISPLAY x 1

GMR FANTOM™ 4"/40W/72NM, SOLID-STATE, OPEN-ARRAY RADAR x 1

GARMIN VHF 210 MARINE RADIO x 1

GARMIN AIS 600 CLASS B TRANSCEIVER x 1

GHP™ 20 MARINE AUTOPILOT SYSTEM WITH SMARTPUMP x 1

GARMIN GSD 25 MARINE NETWORK SOUNDER 2KW x1

II. RAYMARINE

RAYMARINE GS15,4" GLASS BRIDGE MULTIFUNCTIONAL DISPLAY WITH WI-FI x 2

RAYMARINE I70 MULTIFUNCTION COLOR DISPLAY x 1

RAYMARINE 48" HD COLOR OPEN ARRAY AND 4KW PEDESTAL x 1

RAYMARINE RAY218E VHF RADIO x 1

RAYMARINE AIS 650 CLASS B TRANSCEIVER x 1

RAYMARINE EVOLUTION AUTOPILOT WITH P70R CONTROL HEAD & ACU-400

ACTUATOR CONTROL UNIT x 1

RAYMARINE CP100 DOWNVISION FISHFINDER x 1

11. STABILIZER CONTROL AND MONITORING DISPLAY

12. BOW & STERN THRUSTER CONTROL PANEL

13. CCTV SYSTEM WITH 8 CHANNEL NETWORK DVR, 5 CAMERAS WITH 2 IN THE ENGINE ROOM AND 2 ON AFT DECK, AND ONE ON FOREDECK FACING WINCH

14. RUDDER INDICATOR

15. FUEL GAUGE HEADHUNTER TS-3000 SERIES

16. SEARCH LIGHT PAR 60010-2024 WITH JOYSTICK CONTROL

17. FUSION STEREO SYSTEM

MS-AV700I DVD / RECEIVER-WITH FUSION LINK

MS-CL602 6" MARINE CEILING MOUNT SPEAKERS x 4

MS-BT200 BLUETOOTH ADAPTER MODULE FOR SIRIUS PORT

18. POP UP TV CABIN W/ 32" LCD TV

19. APPLE TV

20. LOW LEVEL LED COURTESY LIGHTS LED 24V

21. LIGHTS UNDER RADAR ARCH LED 24V

22. S/S GRAB RAIL AROUND BAR UNIT

23. LED INDIRECT LIGHTING UNDER WET BAR AND SEATING

24. S/S STEERING WHEEL

25. BUELL AIR HORN

26. LEBROC LX DOUBLE WIDE TWO SEATER HELM SEAT

27. STARBOARD SETTEE TO PULL OUT WITH CUSHION INSERT TO CONVERT TO A SKIPPERS BERTH

## IV. ENGINE PROPULSION & ENGINE ROOM EQUIPMENT

1. MAN D2842 LE433 1550HP/2300RPM ENGINE x 2  
ZF TRANSMISSION ZF2050A, 2.029:1 RATIO x 2

2. ONE DUAL RACOR FILTER FOR EACH ENGINE x 1

3. GENERATOR RACOR FILTER FOR EACH GENSET

4. VAN CAPPELLEN DESIGN DOUBLE SOUND & HEAT INSULATED MATERIAL WITH FOAM & LEAD COMBINATION THROUGHOUT ENGINE ROOM

5. WELL PLANNED, SPACIOUS E/R WITH WHITE PAINTED FINISH AND GREY NON-SKID RUBBER FLOORING

6. FUEL TANKS WITH ELECTRIC SENDING UNITS - HEADHUNTER TS-3000 SERIES

7. AUTOMATIC FIRE EXTINGUISHER - SEAFIRE FM-200

8. EXTRACTOR FANS - DELTA "T" SYSTEM WITH AUTOMATIC VENT CLOSURE IF FIRE

9. E/R AC FLOURESCENT LIGHTS & DC LED DOME LIGHTS

10. MANUAL BILGE PUMP WITH PICKUP AT LOWEST POINT WHEN VESSEL IS AT REST

11. HIGH VOLUME AC F.W. PRESSURE PUMP AND ONE 24V DC PUMP FOR BACK UP  
HEADHUNTER MARCH 5 M5-115 AC PUMP  
GROCO PSR 4000004-24 24V DC PUMP

12. CHILLED WATER AIR CONDITIONING  
CRUISAIR AIR CONDITIONING 96,000 BTU

13. WATER MAKER  
AQUA WHISPER DX 450 450GPD x 2

14. OIL CHANGING PUMP FOR ENGINES, GENERATORS AND TRANSMISSIONS

15. GENERATOR 1 \* ONAN QD MDKBU 29 KW 60HZ  
GENERATOR 2 \* ONAN QD MDKBU 29 KW 60HZ (OPTION)

16. WATER HEATERS - TORRID 20 GALLONS x 2

17. EMERGENCY TILLER

18. HYDRAULIC PUMP ON EACH ENGINE FOR THRUSTERS,STABILIZERS AND STEERING

19. CENTRAL VACUUM CLEANER (NUTONE CV352 110V/220V SYSTEM)

## V. ELECTRICAL

1. 110V/220 AC ELECTRICAL SYSTEM

2. DC 24V SYSTEM

3. 75' GLENDINNING CABLE MASTER - 50 AMP x 2 SETS

4. BATTERY CHARGER FOR 24V CIRCUIT

5. BATTERY CHARGER FOR 12V CIRCUIT

6. ALTERNATOR SPLIT CHARGING SYSTEM LINKED CHARGING THE HOUSE BANKS WITH BEP  
HIGH CHARGE REGULATORS FITTED

7. 4 x 255AMP/HR 12v GELL CELL SEALED BATTERIES FOR SHIP SERVICE

8. 225AMP/HR GELL CELL SEALED BATTERIES FOR ENGINES x 4

9. 210AMP/HR GELL CELL SEALED BATTERIES FOR GENSET x 1

10. AC SOCKETS THROUGHOUT THE BOAT

11. GFI PROTECTION FOR AC REQUIRED SOCKETS

12. BEP BATTERY SELECT SWITCH

13. MAIN ELECTRICAL PANEL INCLUDES AC & DC CIRCUIT BREAKERS WITH 4 PANELS (E/R,  
HELM, A/C AND DC) WITH AUTOMATIC BACKLIGHTING WHEN DOOR OPENS

14. ANTI-ELECTROLOSIS BONDING SYSTEM

15. AUTOMATIC ISOLATING & BOOSTER TRANSFORMER - 50AMP x 2

16. GENERATORS: (2) Onan QD MKKDS 29kW

## VI. PLUMBING SYSTEM

1. 100 GALLON BLACKWATER HOLDING TANK WITH MACERATOR PUMP

2. "Y" VALVE FOR HOLDING TANK OVERBOARD PUMP OUT

3. HOLDING TANK LEVEL INDICATOR HEADHUNTER

4. SUMP PUMP FOR SHOWER

5. MARINE GRADE LINES FOR FRESH WATER SYSTEM

6. S/S WATER TANK WITH SENDING UNIT - 350 GALLONS

7. SIGHT GAUGES FOR FUEL AND WATER TANKS

8. DOCKSIDE FRESH WATER INLET

9. COLOR CODED PIPING FOR EASY IDENTIFICATION

10. BRONZE INTAKE VALVES FOR ALL THRU-HULL FITTINGS

11. MANIFOLD FOR OVERBOARD DISCHARGES TO MINIMIZE NUMBER OF THRU-HULL FITTINGS

12. FRESH WATER SEALAND VACUUM TOILET SYSTEM

13. HIGH WATER BILGE ALARM IN ENGINE ROOM, FORWARD BILGE AND LAZARETTE COMPARTMENTS x 6 WITH MIMIC PANEL AT HELM

14. BILGE PUMP x 6 RULE 3700 GPH PUMPS WITH FLOAT SWITCHES WITH HIGH WATER ALARMS

## VII. INTERIOR FINISH

1. INTERIOR JOINERY IN MAHOGANY OR CHERRY, BURR WOOD AND IVORY LACQUER WITH A CHOICE OF UPHOLSTERY FABRICS

## VIII. GALLEY

1. ELECTRIC REFRIGERATOR/FREEZER- G.E. LATEST MODEL
2. COOKTOP - G.E. LATEST MODEL
3. OVEN - G.E. LATEST MODEL
4. MICROWAVE W/EXTRACTOR FAN - G.E. LATEST MODEL
5. S/S SINK
6. HOT AND COLD WATER
7. TRASH COMPACTOR - G.E. LATEST MODEL
8. DISHWASHER - G.E. LATEST MODEL
9. DOUBLE AC SOCKETS x 2
10. CUPBOARD, DRAWERS AND STOWAGE
11. TEAK FLOOR OR MARBLE FLOOR
12. OVERHEAD STORAGE ABOVE GALLEY BENCH

## IX. SALOON

1. DINING AREA IN UPPER SALOON
2. PNEUMATIC SALOON SLIDING DOOR WITH PUSH BUTTON AND SAFETY SENSOR DEVICE
3. 42" LCD TV
4. BOSE LIFESTYLE 535 SERIES III HOME THEATER SYSTEM
5. PIONEER BDP-160 BLU-RAY DISC PLAYER
6. APPLE TV
7. HIGH QUALITY LEATHER COUCH IN LOWER SALOON BUILT IN CURVED SEATING
8. MAIN CONTROL PANEL AC/DC
9. LOW LEVEL LIGHTS 24V LED
10. CEILING LED LIGHTING 24V LED

11. COFFEE TABLE

## X. MASTER STATEROOM

1. KING SIZE BERTH

2. STORAGE BENEATH BERTH

3. DRAWERS IN BASE OF BERTH

4. VANITY

5. COUCH

6. WALK-IN CLOSET FINISHED IN CEDAR WOOD

7. LED CEILING LIGHTING 24V

8. READING LIGHTS 24V x 2

9. LARGE SIDE WINDOWS 3 x MANSHIP S/S W/ 2 FIXED AND ONE OPENING

10. 42" LCD TV

11. FUSION MS-205 RECEIVER/MEDIA PLAYER WITH FULL IPOD/IPHONE CONTROL

MS-CL602 6 " MARINE CEILING MOUNT SPEAKERS x 4

MS-BT-200 BLUETOOTH ADAPTER MODULE FOR SIRIUS PORT

12. PIONEER BDP-160 BLU-RAY DISC PLAYER

13. APPLE TV

## XI. MASTER EN SUITE SHOWER ROOM

1. VACUUM TOILET - SEALAND VACUUM TOILET (BONE COLOR)

2. WASH BASIN WITH MABLE COUNTERTOP

3. HOT & COLD WATER

4. FAUCET AND FITTINGS

5. MIRROR AND MIRROR CEILING
  6. LACQUER FINISH ABOVE BASIN COUNTERTOP
  7. VENEER FINISH BELOW BASIN COUNTERTOP
  8. EXTRACTOR FAN
  9. AC DOUBLE SOCKET WITH GFI
  10. LARGE SHOWER W/LACQUER FINISH AND MARBLE FLOORS
  11. LED CEILING LIGHTS 24V
  13. MARBLE FLOOR
- ## XII. FORWARD (VIP) STATEROOM

1. DOUBLE BERTH
2. STORAGE BENEATH BERTH
3. DRAWERS IN BASE OF BERTH
4. WALK-IN CLOSET FINISHED IN CEDAR WOOD
5. DRESSING TABLE W/STOOL
6. READING LIGHTS 24V x 2
7. LED CEILING LIGHTS 24V
8. AC DOUBLE SOCKETS
9. 32" LCD TV
10. FUSION MS-AV700I DVD / RECEIVER – WITH FUSION LINK  
MS-CL602 6" MARINE CEILING MOUNT SPEAKERS x 4  
MS-BT-200 BLUETOOTH ADAPTER MODULE FOR SIRIUS PORT
11. APPLE TV

### XIII. FORWARD (VIP) EN SUITE SHOWER ROOM

1. VACUUM TOILET - SEALAND VACUUM TOILET (BONE COLOR)
2. WASH BASIN WITH MABLE COUNTERTOP
3. HOT & COLD WATER
4. FAUCET AND FITTINGS
5. MIRROR AND MIRROR CEILING
6. LACQUER FINISH ABOVE BASIN COUNTERTOP
7. VENEER FINISH BELOW BASIN COUNTERTOP
8. EXTRACTOR FAN
9. AC DOUBLE SOCKET WITH GFI
10. LARGE SHOWER W/LACQUER FINISH AND MARBLE FLOORS
11. LED CEILING LIGHTS 24V
12. MARBLE FLOOR

### XIV. PORT GUEST CABIN

1. TWO SINGLE BERTHS
2. UNDER BERTH STORAGE
3. READING LIGHTS 24V x 2
4. LED CEILING LIGHTS 24V x 2
5. HANGING LOCKER
6. PULLMAN BERTH

7. 32" LCD TV

8. FUSION MS-AV700I DVD / RECEIVER – WITH FUSION LINK  
MS-CL602 6" MARINE CEILING MOUNT SPEAKERS x 4  
MS-BT-200 BLUETOOTH ADAPTER MODULE FOR SIRIUS PORT

9. APPLE TV

## XV. PORT TOILET/SHOWER ROOM

1. VACUUM TOILET - SEALAND VACUUM TOILET (BONE COLOR)
2. WASH BASIN WITH MABLE COUNTERTOP
3. HOT & COLD WATER
4. FAUCET AND FITTINGS
5. MIRROR AND MIRROR CEILING
6. SEPARATE SHOWER COMPARTMENT W/LACQUER FINISH AND MARBLE FLOORS
7. AC DOUBLE SOCKET WITH GFI
8. LACQUER FINISH ABOVE BASIN COUNTERTOP
9. VENEER FINISH BELOW BASIN COUNTERTOP
10. EXTRACTOR FAN
11. LED CEILING LIGHTS
12. MARBLE FLOOR
13. FULL HEIGHT WASHER/DRYER - G.E. LATEST MODEL

## XVI. STARBOARD GUEST CABIN

1. DOUBLE BERTH
2. UNDER BERTH STORAGE

3. READING LIGHTS 24V x 2

4. LED CEILING LIGHTS 24V x 2

5. HANGING LOCKER

6. 32" LCD TV

7. FUSION MS-AV700I DVD / RECEIVER – WITH FUSION LINK

MS-CL602 6" MARINE CEILING MOUNT SPEAKERS x 4

MS-BT-200 BLUETOOTH ADAPTER MODULE FOR SIRIUS PORT

8. APPLE TV

## **XVII. STARBOARD TOILET/SHOWER ROOM**

1. VACUUM TOILET - SEALAND VACUUM TOILET (BONE COLOR)

2. WASH BASIN WITH MABLE COUNTERTOP

3. HOT & COLD WATER

4. FAUCET AND FITTINGS

5. MIRROR AND MIRROR CEILING

6. SEPARATE SHOWER COMPARTMENT W/LACQUER FINISH AND MARBLE FLOORS

7. AC DOUBLE SOCKET WITH GFI

8. LACQUER FINISH ABOVE BASIN COUNTERTOP

9. VENEER FINISH BELOW BASIN COUNTERTOP

10. EXTRACTOR FAN

11. LED CEILING LIGHTS 24V

12. MARBLE FLOOR

## **XVIII. CREW QUARTERS**

1. ENTRANCE DOOR FROM TRANSOM
2. TWO SINGLE BERTHS
3. READING LIGHTS 24V x 2
4. LED CEILING LIGHTS
5. AC DOUBLE SOCKET
6. HANGING LOCKER
7. HOT & COLD TO WASH BASIN AND SHOWER WITH MARBLE COUNTERTOP AND FLOOR
8. VACUUM TOILET - SEALAND VACUUM TOILET (BONE COLOR)
9. 24" LCD TV
10. FUSION MS-AV700I DVD / RECEIVER – WITH FUSION LINK  
MS-CL602 6 " MARINE CEILING MOUNT SPEAKERS x 4  
MS-BT-200 BLUETOOTH ADAPTER MODULE FOR SIRIUS PORT
11. APPLE TV

## XIX. REMARKS

Please note, this is an unbuilt new construction project which has not yet been started. Listing broker has a list of popular options and prices, however, the standard equipment list above is very complete! Completion time is approximately 9-12 months depending on other yard projects.

**\*\*OPTIONS UPON REQUEST\*\***

**\*\*ALL SPECIFICATIONS SUBJECT TO CHANGE WITHOUT NOTICE \*\***

***Price is FOB Taiwan. Neither duty nor tariffs are included in the price.***

## COMMENT

**Since this is a new build offering, all photos are of previous projects. Exact layout, wood and stone selection are buyer's choice.**

***Price is FOB Taiwan. Neither duty nor tariffs are included in the price.***

## Disclaimer

Specifications are provided for informational purposes only. Data was obtained from sources  
Generated On 4/3/2026 10:40 PM by BR-Marine Group SVC Account

25

believed reliable but is not guaranteed by owner or brokers. Buyer assumes responsibility to verify all speeds, capacities, consumption's and other measurements contained herein and otherwise provided and agrees to instruct his agents to confirm such details prior to purchase. Vessel is subject to prior sale, price and inventory changes and withdrawal from market without notice.