



OVERVIEW

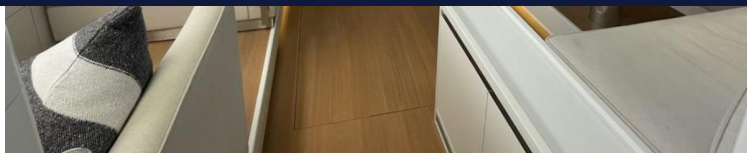


TYPE	Sail	DESIGNER	Jean-Marc Piaton
LENGTH	76' (23.16m)	SPEED	8 Knots
BEAM	20' (6.1m)	ENGINES	1x, Volvo, D4, 180 HP
DRAFT	9' 8" (2.95m)	RANGE	
BUILDER	CNB YACHTS	FLAG	Cayman Islands
HULL MATERIAL	GRP	TAXES PAID	VAT Unpaid

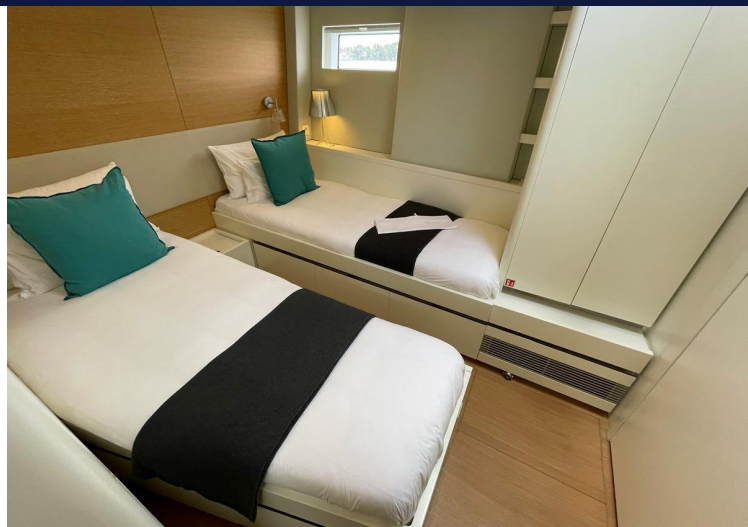
ASKING PRICE \$3,122,012 USD

TJB SUPER YACHTS LTD SVC ACCOUNT M: T: E: INFO120120220343@TJB-SUPER-YACHTS-LTD.COM













DETAILED SPECIFICATIONS

MAIN CHARACTERISTICS

TYPE	SAIL
COUNTRY OF REGISTRY	CAYMAN ISLANDS
PORT OF REGISTRY BUILT	2020
REFIT	N/A
BUILDER	CNB YACHTS
NAVAL ARCHITECH	N/A
EXTERIOR DESIGNER	N/A
INTERIOR DESIGNER	JEAN-MARC PIATON
LWL	N/A
BEAM	20' (6.1M)
MAX DRAFT	9' 8" (2.95M)
CLASSIFICATION:	DNV/GL
CONSTRUCTION	N/A
HELIDECKS/HANGER	N/A

OVERVIEW

Popular Briand/CNB team as performance sailing designer/builder
 Designed for blue-water cruising with A Ocean Certification.
 DNV/GL Class; currently certified for commercial use
 Under 10' draft for performance vessel.
 Carbon mast and boom
 Bow and stern thrusters
 Opening transom; garage tender storage
 Raised saloon; Light-filled contemporary interior
 Owner/guest separated from crew
 Young 3 year old yacht
 Not for sale to US residents while in US waters

ACCOMMODATIONS

Kestrel accommodates 6 guests in 3 staterooms forward plus 2 crew in aft captain's cabin. There is one extra crew cabin in the fore peak with single bed, toilet and sink, and "air-conditioning". Guest staterooms are comprised of 1 centerline Queen in the Master full-width stateroom forward, 1 double VIP port which converts to a twin stateroom; and 1 stateroom starboard with bunk beds. All staterooms have ensuite heads with stall showers and Vacuflush fresh water toilets.

WALKTHROUGH

The cockpit has twin helms aft. Going forward is space before arriving to the cockpit. Ample settees are on each side; the portside dining table can telescope down to become a large daybed for lounging. From the cockpit one enters the light-filled deck saloon with a dining area to port. The large dining table can be configured as two cocktail tables. On the other side are a nav station and lounge area. Here two large chairs facing each other can swivel and connect to become a sofa facing the dining area. Down a few steps forward is a VIP to port with convertible double bed or twin beds arrangement, while on the other side is a stateroom with bunk beds. The master cabin is forward with a centerline queen bed facing forward. Heads are ensuite to each stateroom; the starboard stateroom head can also act as a day head. Aft of the raised saloon, down a few steps, is a large galley/crew mess to starboard and on the other side is a very spacious captain's cabin with ensuite head for two crew. Engine room is in the center of the boat. An aft garage houses the tender.

CONSTRUCTION

GRP, gelcoat finish, with teak decks
Fin keel with bulb
Twin rudders

DIMENSIONS

General

Length Overall: 23.17m (76')
Beam: 6.10m (20')
Draft: 3m (9' 8")

Capacities

Fuel Capacity: 2550 L (673.64 Gal)
Water Capacity: 1550 L (409.47 Gal)
Grey Water: 2 x tanks @ 200 L each (400 L total)
Black Water: 3 x tanks @ 50 L each (150 L total)

Speed / Range

Maximum speed: 10 knots under power
Cruising speed: 8 knots under power
1,800 nm @ 9 knots

MACHINERY

Main Engines and Other Machinery

1 x Volvo D4 180hp engine: 3,510 hrs (Aug 2023) ; annual service by Volvo completed June/July 2023.

1 x Volvo gearbox

Shaft drive, folding propeller

Side Power bow thruster (fully serviced June/July 2023)

Side Power stern thruster (fully serviced June/July 2023)

Dynema steering system; Dynema cable on chain helm control

Thermonanica air conditioning; reverse cycle, 72,000 BTU (fully serviced July/August 2023)

Sea Recovery watermaker; 280 l/h (fully serviced June/July 2023)

Cantalupi fresh water system 220V pump; (2) 24V Jabsco back up pumps

4 x Vacuflush toilets; fresh water

Bilge water system:

- Rulematic 500 bilge system: (4) Jabsco Puppy pumps for main compartments with Rulematic individual float switches throughout which activate the system as necessary.
- Roving bilge pump; can be connected to power socket.

Generators and Electricity

Onan Cummins generator: 17.5 KW, 7607 hrs (August 2023), professional 8,000 hour service done in Palma (June/July 2023)

Electrical panel 12V/24V/230V

Mastervolt Inverter: 24V/230V/2500 W

2x battery charger 24V

24V lighting throughout

Batteries:

Mastervolt General Service battery bank, (4) lithium ion, 24V (4) Optima 12v, one each dedicated to the following:

- Main engine start
- Generator start
- Bow thruster
- Stern thruster

NAVIGATION, COMMUNICATIONS AND ENTERTAINMENT SYSTEMS

Navigation

Axiom 19XL Chart Plotter, at chart table

2 x Axiom chart plotters; one at each outside helm

Full Raymarine Navigation Pack: displayed on all chart plotters

- Raymarine radar
- Raymarine autopilot
- Raymarine GPS

Raymarine multi-function display: depth, wind, speed, etc.

Navionics, Time zero plotter

Hand-held GPS

Lecomble and Schmitt Autopilot

- Located at all three stations; each outside helm and inside navigation station.
- Remote autopilot smart controller

2 x magnetic compass

Navtex

AIS 700 (sender/receiver)

Communication Systems

V Sat satellite TV system

V Sat telephone system

Raymarine SSB

3 x Raymarine VHF: 1 fixed, 2 wireless hand-held

HP computer

HP printer

Entertainment Systems

Samsung TV flat screen

Stereo: Sonos and JBL speakers

Pioneer DVD player

GALLEY AND LAUNDRY EQUIPMENT

Main Galley Equipment

Miele gimballled 4-burner electric stove

Miele oven

Microwave

Miele dishwasher

Miele fridge; 231 L w/ 57 L freezer compartment

Miele freezer; 104 L

Webasto freezer; 90 L

Frigomar small fridge

Webasto wine cooler

Frigomar icemaker

Low and high stowage lockers, Corian worktop, stainless steel double sink with single lever mixer tap, 230V outlets

Laundry Equipment

Miele washer/dryer

DECK AND HULL

Teak decks
Electric Lewmar anchor windlass system
Galvanized anchor (80m)
(1) carbon passerelle
Swim ladder
Hot and cold exterior shower in cockpit
Deck wash pump
Spotlights on the mast
Underwater lights

SAILS AND RIGGING

Carbon Mast and Boom; Carbon Park Avenue Boom (new Oct 2022)

Sails by North, 3DI

- Main
- Staysail
- Genoa

Sails by Hood

- Code Zero
- Storm Sail

Winches by Harken:

- 3 x Electric ST80 winches; 2 primaries in cockpit, 1 for main
- 2 x Electric ST70 winches; secondary in cockpit
- 2 x Electric ST70 winches; for halyards and reefing at mast
- Electric ST70 winch; at mast
- Manual ST70 winch; at mast

Sails (Main, genoa, staysail, code 0) fully serviced by North Sails June/July 2023

Running rigging serviced June/July 2023 (main, genoa, staysail sheets recovered: new reef lines; all lines cleaned)

SECURITY, FIRE FIGHTING AND SAFETY EQUIPMENT

Fire Fighting Equipment

2 x Fixed FM 200 systems: 1 in engine room, 1 in lazarette
1 x portable CO2
7 x portable dry powder fire extinguishers
4 x fire/heat/smoke detectors

Safety Equipment

2 x 6-person life rafts
1 x EPIRB
1 x SART
12 x flares
2 x Jon Buoy
Ocean safety extensive medical kits

TENDER AND TOYS

Williams 380 Turbo jet tender (fully serviced June/July 2023)
 2 x Indiana stand-up paddleboards
 2 x "Towables"
 1 x Bower Jr. dive compressor

WORKS COMPLETED JUNE/JULY 2023 (STP Shipyard Palma)

Serviced Professionally

Main engine completed annual service by Volvo; (hrs: 3510, Aug. 2023)
 Generator completed professional 8,000 hour service; (hrs: 7607, Aug. 2023)
 Bowthruster fully serviced
 Sternthruster fully serviced
 Watermaker fully serviced
 Airconditioning fully serviced
 Sails fully serviced by North Sails: (Main, genoa, staysail, code 0)
 Running rigging serviced (main, genoa, staysail sheets recovered: new reef lines; all lines cleaned
 Williams tender fully serviced

Underbody

Antifouling applied
 Anodes installed
 Rudder bearings replaced
 Pulled shaft; replaced shaft seals

On Deck

Hatch frames (6) re-painted/re-screwed
 Boom paint touchups
 Deck touch ups and maintenance
 Covers made new for mast instrument displays, Jon Bouy and inside table

Miscellaneous

Raymarine Backbone cables replaced.
 Two breakers installed in forepeak for hydraulic system
 New bilge pump forepeak
 Battery terminals inspected, cleaned, greased

Interior cushions cleaned professionally

REMARKS

This 2020 CNB 76 sailing yacht is the hallmark of current features for a modern sailing yacht. Kestrel's, carbon rig, sail combinations and layout provide ease of sailing this fast, safe, ocean-going vessel. Bow and stern thrusters make maneuvering a dream. Ease of living is also apparent with maximum flexibility Kestrel offers; furniture and beds convert to be used for various functions and the crew is separated from the owner/guest area. Inside, Kestrel's raised saloon and light contemporary interior provide a naturally light and tranquil ambience. If you're looking for a fast, strong yacht with a draft under 10 feet, Kestrel is your answer for coastal or ocean cruising.

EXCLUSIONS

List of exclusions provided upon request.

Disclaimer

The company offers the details of this vessel in good faith but cannot guarantee or warrant the accuracy of this information nor warrant the condition of the vessel. A buyer should instruct their agents, or their surveyors, to investigate such details as the buyer desires validated. This vessel is offered subject to prior sale, price change, withdrawal without notice, and tax when applicable.



KESTREL



KESTREL

+44 (0) 207 183 4393 • ENQUIRIES@TJBSUPERYACHTS.COM

24.11 CODA STUDIOS, 189 MUNSTER ROAD, FULHAM, LONDON, SW6 6AW, UK