



OVERVIEW

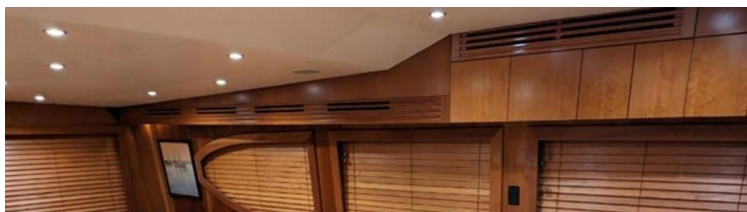
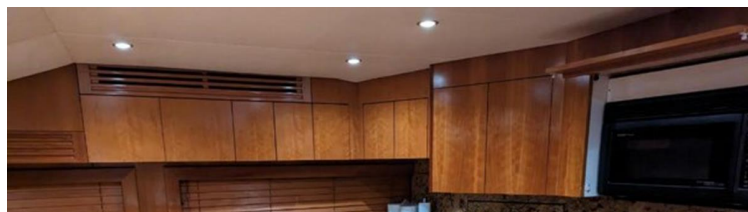
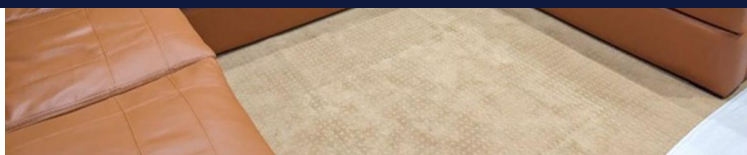


TYPE	Motor	DESIGNER	N/A
LENGTH	68' (20.73m)	SPEED	28 Knots
BEAM	21' 5" (6.53m)	ENGINES	2x, Caterpillar, C-32, 1550 HP
DRAFT	5' 3" (1.6m)	RANGE	
BUILDER	HATTERAS	FLAG	N/A
HULL MATERIAL	Fiberglass	TAXES PAID	N/A

ASKING PRICE \$1,399,000 USD

TJB SUPER YACHTS LTD SVC ACCOUNT M: T: E: INFO120120220343@TJB-SUPER-YACHTS-LTD.COM









DETAILED SPECIFICATIONS



MAIN CHARACTERISTICS

TYPE	MOTOR
COUNTRY OF REGISTRY	N/A
PORT OF REGISTRY BUILT	2007
REFIT	N/A
BUILDER	HATTERAS
NAVAL ARCHITECH	N/A
EXTERIOR DESIGNER	N/A
INTERIOR DESIGNER	N/A
LWL	59' 10" (18.24M)
BEAM	21' 5" (6.53M)
MAX DRAFT	5' 3" (1.6M)
CONSTRUCTION	N/A
HELIDECKS/HANGER	N/A

Vessel Walk Through

Entering the beautifully decorated salon, you'll immediately sense the massive feel to this area. Surrounded by a beautiful satin-finished cherry wood throughout and large windows, makes this a very open setting. To port, an oversized U-shaped plush leather sofa, which houses storage on both sides, accented by a beautiful custom wood table. To starboard you'll find the entertainment center which houses a flat screen TV. There is also great storage in this area along with an icemaker. Moving forward to starboard is the oversized U-shape dinette which features rich leather seating with storage below and an elegant granite table. Across to port is the huge gourmet galley, boasting (4) SUB ZERO refrigerator drawers and (2) freezer drawers. Granite countertops surround this area along with the four-burner cooktop and an abundance of storage.

Moving down into the companionway, aft to port, you will step into the full beam master. This stateroom is magnificent and beautifully decorated with a full walkaround king berth with tremendous storage for your personal belongings. Forward to the starboard guest stateroom which features side-by-side berths, to port is another guest stateroom with over/under bunks. Moving to the bow, you will find a queen walkaround VIP berth.

Salon

- U-shaped custom leather sofa with storage below
- Custom wood table with storage below
- Custom carpet runner
- Samsung flat panel TV
- Salon icemaker
- Blinds on port, starboard & aft windows
- Spiral staircase to bridge aft
- Electric panel down
- Bottle storage

Galley

- (4) SUB ZERO refrigerator drawers
- (2) SUB ZERO freezer drawers
- KitchenAid four-burner electric stove
- Sharp Carousel convection oven
- Garbage disposal
- Granite countertops
- Amtico flooring
- Indirect rope lighting under cabinets
- Oversized U-shaped dinette with storage
- Abundance of storage to port
- Starboard brow pantry houses (2) Nutrichef wine chillers, multi-zone sound system electric sub panel

Port Attic

- Light
- Pantry storage bins
- Fire extinguisher
- Cooling fan with thermostat
- Onboard ship's computer 120/240V ship's #1
- 24V Ship's panel #1
- System's monitor panel
- Fresh water manifold

Companionway

- Full carpet runners
- Laundry locker with pocket door, port forward, with Maytag washer & dryer

Master Stateroom

- Walk around king berth
- Soffit above bed with (3) recessed lights
- Night table with lamp, port and starboard of bed, with table lamp
- Bureaus, port and starboard
- Port holes port and starboard with shades
- Custom carpet
- Custom headboard
- Samsung flat panel TV
- CruiseAir conditioning control
- Walk-in cedar paneled closet with light to port
- Sat TV/stereo control remote
- En Suite
- Amtico flooring
- Mirrored overhead
- Royal flush head
- Marble vanity with sink
- Shower stall with bench seat, door, (2) overhead lights, shower head on hose with wall mount
- Mirrored vanity
- Custom wallpaper

Starboard Guest Stateroom

- by-side single berths
- Night stand between berths with lamp
- Hanging locker with light
- Sharp LCD TV
- Mirrored panel on aft bulkhead
- Smoke alarm
- Remote stereo control
- Storage drawers outboard
- En Suite
- Amtico sole
- Mirrored overhead recessed lights
- Overhead hatch with screen & blackout cover
- Marble vanity
- Mirrored vanity
- Headhunter electric head
- Circular shower stall with Plexi door, hot/cold water faucet to showerhead on hose with adjustable wall mount
- Custom wallpaper

Port Guest Stateroom

- Over/under bunks
- Reading lights
- Hanging locker with light, CruiseAir SMX IR air conditioning control
- (2) Overhead stereo speakers with volume control
- Storage under lower berth
- (4) Stacked drawers
- Sharp LCD television
- Stereo controller
- Port Guest Head - Shared as Day Head
- Mirrored ceiling
- Mirrored vanity
- Marble vanity top
- Amtico flooring
- Circular shower
- Custom wallpaper

Forward VIP Stateroom

- Walkaround queen berth with storage
- Lockers & drawers port & starboard
- Hanging locker with light, Cruisair SMX IR air conditioning control
- Overhead hatch with screen & blackout cover
- Sharp LCD TV aft
- Remote stereo controller

VIP En Suite

- Amtico sole
- Mirrored overhead with recessed lights
- Overhead hatch with screen & blackout cover
- Marble vanity
- Mirrored vanity
- Headhunter electric head
- Circular shower stall with Plexi door, hot/cold water faucet to showerhead on hose with adjustable wall mount
- Towel bar

Deck and Superstructure

- Pipewelders Tuna Tower
- Fiberglass bow pulpit with anchor roller
- Bow rail
- Maxwell Windlass with (2) deck switches
- Danforth H3100 anchor with approximately 10' chain & 300' of 3/4" Nylon Rope
- (3) Foredeck hatches
- (2) Bow cleats
- Spring cleats, (2) port & (2) starboard
- Quadruple spreader hydraulic outriggers
- Freshwater washdown connection in anchor locker
- 2200lb Nautical Structures davit

Cockpit

- Electric door into salon
- Teak cockpit with coverboards
- Offset stanchion with large rocket launcher
- Fishbox in deck
- Eskimo ice machine
- Refrigerated drink box
- Transom live well or kill box
- Garmin multi function display
- ICOM Command Mic
- Tackle drawers to starboard
- Mezzanine deck with deep freezers, storage lockers, A/C in cockpit, CCTV camera & stereo speakers
- Transom door with gate
- (2) 50Amp Cablemasters, port & starboard
- Dockside water inlet, port & starboard
- Fresh water washdown, port
- Salt water washdown, Starboard
- Engine room access

Enclosed Flybridge & Electronics

- (2) Garmin 8622 Display
- Garmin 8617 display
- Ritchie compass
- Monitor to ship's systems
- (2) ICOM IC-M602 VHF radios
- Garmin 25kW radar
- Garmin GSD26 sounder
- Garmin autopilot
- Navigation lights, anchor light, trim tabs
- Sea Fire fire system pull
- CruiseAir air conditioning controls
- Stidd helm chair with footrest
- L-Shaped bench seat with storage to port
- Wet bar with granite counter, stainless steel sink and U-Line refrigerator to starboard
- Caterpillar back-up engine control
- Fusion stereo
- Hydro Rigger controls

Aft Bridge Deck

- Teak pod with Garmin sounder/autopilot
- Spiral staircase leading up from salon
- Fiberglass non-skid deck
- Aluminum railings
- Bench seat with cushions storage
- Bow thruster control
- Caterpillar control
- (8) Rod holders along aft rail

Tower

- (2) Aft Quartz lights
- Viking 6-person life raft on enclosed top

Fiberglass console with:

- Ritchie compass
- Garmin plotter/sounder
- ICOM M422 VHF
- Engine start/stop switch
- Horn switch
- Bow thruster
- (2) Light bars on platform

Electrical System

- (2) 27 kw Onan generators with starboard 7638 hours, port 6780 hours
- Mastervolt battery chargers
- 12V Engine storage batteries
- (2) 50 amp shore power cords
- Battery parallel
- A/C D/C Lighting

Engine Room and Mechanical Equipment

- Twin Caterpillar C32 engines, 1800HP
- Hydraulic bow thruster
- DC lights
- Fluorescent light
- 24V Ship service
- AC Ship's panel
- (4) Battery cut off switches
- Port and starboard triple Racor fuel filters
- DC electric/automatic bilge pump, forward & aft
- (2) Fuel transfer pump
- Fuel selector valve
- Fresh water manifold
- CruiseAir air conditioning units
- Refrigeration/Air conditioning raw water pumps
- CCTV camera
- Racor fuel filter to each generator
- Eskimo ice machine
- Battery charger
- Engine room blowers
- Oil change pump system
- Cablemaster bin - port & starboard
- Fuel priming pumps - port & starboard
- Sea Fire fire system
- High water alarm sensor
- Eskimo icemaker
- FCI watermaker

Disclaimer

The Company offers the details of this vessel in good faith but cannot guarantee or warrant the accuracy of this information nor warrant the condition of the vessel. A buyer should instruct his agents, or his surveyors, to investigate such details as the buyer desires validated. This vessel is offered subject to prior sale, price change, or withdrawal without notice.

Disclaimer

The company offers the details of this vessel in good faith but cannot guarantee or warrant the accuracy of this information nor warrant the condition of the vessel. A buyer should instruct their agents, or their surveyors, to investigate such details as the buyer desires validated. This vessel is offered subject to prior sale, price change, withdrawal without notice, and tax when applicable.



Buzz



Buzz

+44 (0) 207 183 4393 • ENQUIRIES@TJBSUPERYACHTS.COM

24.11 CODA STUDIOS, 189 MUNSTER ROAD, FULHAM, LONDON, SW6 6AW, UK