

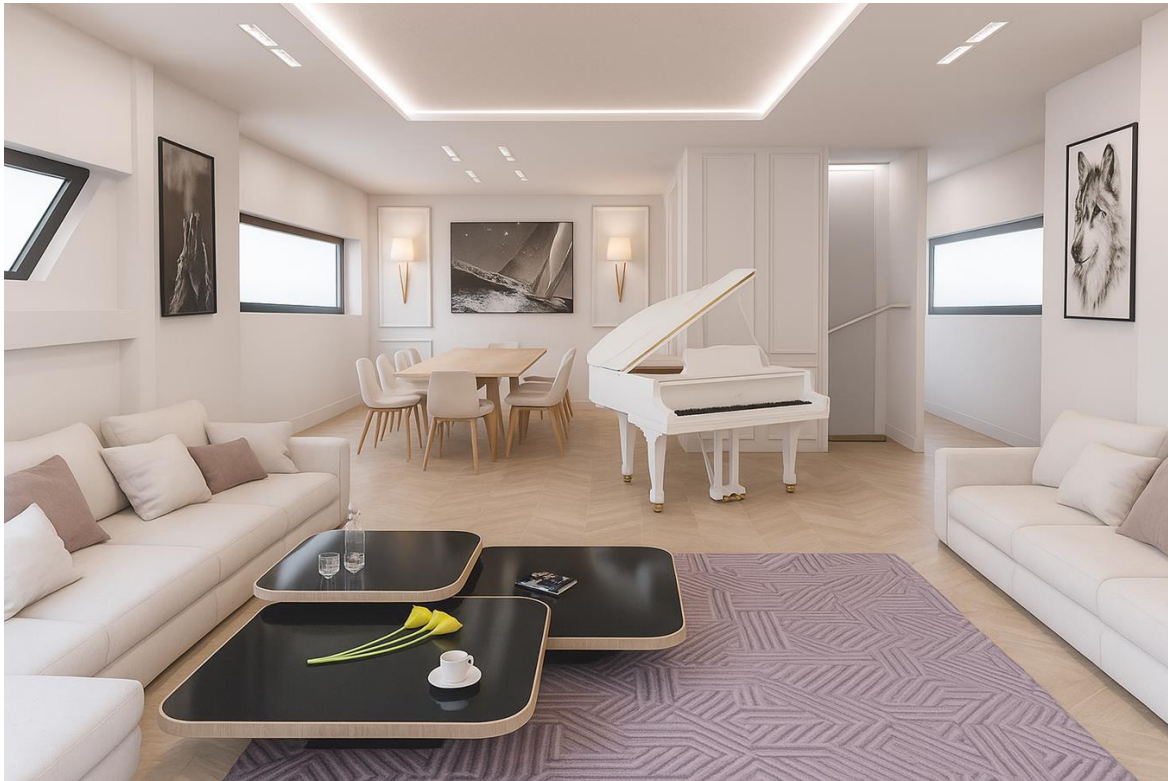


<b>Type</b>	<b>Trawler Yacht</b>	<b>Classification</b>	--
<b>Top</b>	<b>Raised Pilothouse</b>	<b>Class Type</b>	--
<b>Model</b>	--	<b>Builder</b>	<b>BRIZO YACHTS</b>
<b>Manuf. Year</b>	<b>2026</b>	<b>Naval Architect</b>	--
<b>Refit Year</b>	--	<b>Interior Design</b>	--
<b>LOA</b>	<b>108' 4" (33m)</b>	<b>Hull</b>	<b>Titanium</b>
<b>Beam</b>	<b>25' 4" (7.7m)</b>	<b>Deck</b>	--
<b>Draft Min/Max</b>	<b>-- / 9' 11" (3m)</b>	<b>Engines</b>	<b>1x, None,</b>
<b>GRT</b>	<b>639340.56 Lbs</b>	<b>Max Speed</b>	<b>16 Knots</b>
<b>Fuel</b>	<b>19000 L (5019.27 Gal)</b>	<b>Cruise Speed</b>	<b>12 Knots</b>
<b>Water</b>	<b>3000 L (792.52 Gal)</b>	<b>Range</b>	--
<b>Flag</b>	--	<b>Accommodations</b>	<b>10 in 5 strms 5 crew</b>

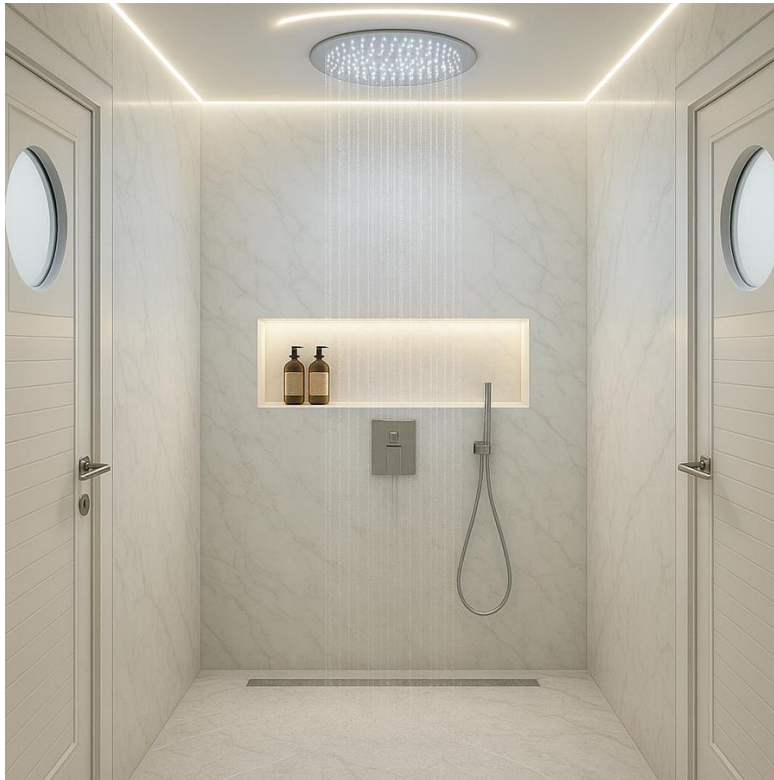
**ASKING PRICE: (\$16,704,877 USD est.)**  
**€14,500,000 EUR**



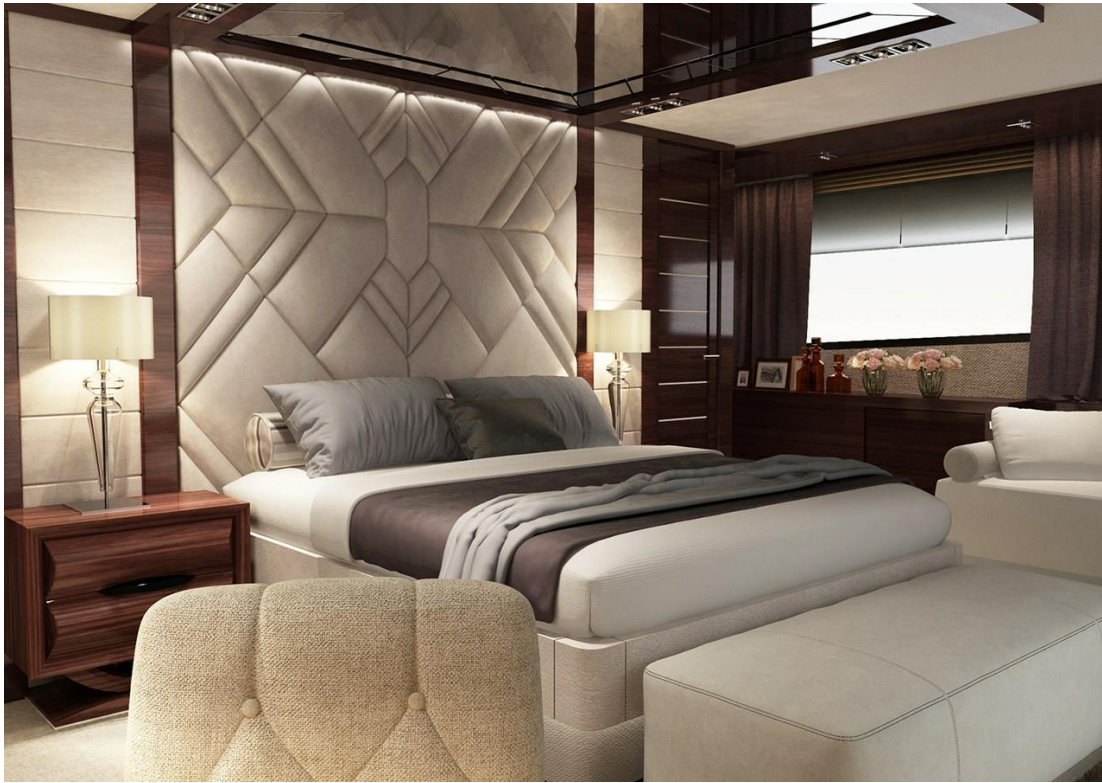


















## 33 Metre Brizo 110 Explorer

Ready for delivery in 2027 with construction time approximately two years from order, the 33 Metre Brizo 110 Explorer embodies the next generation of luxury expedition yachts. Now available for sale and currently located in Porvoo, Finland, this luxury superyacht represents a unique opportunity to acquire a vessel of exceptional build quality and versatility.

For those who value flexibility, the 33 Metre Explorer is remarkably adaptable. Optional features such as a Jacuzzi, infinity pool and an array of water toys enhance the yacht's leisure potential.

Crafted with a steel hull and aluminium superstructure to Germanischer Lloyd and LY3 classifications, she has been designed to perform in all seas, combining bold styling with true ocean-going capability.

The yacht's expansive layout accommodates 10 guests in five ensuite cabins, including a panoramic owner's stateroom on the upper deck with its own private terrace, a secluded retreat with commanding views. Crew quarters for five are positioned to ensure privacy and operational efficiency.

Performance is as refined as her design, reaching a top speed of 15-16 knots depending on engine choice, and a comfortable cruising speed of 12 knots, perfectly suited to long-range voyages or serene coastal cruising.