



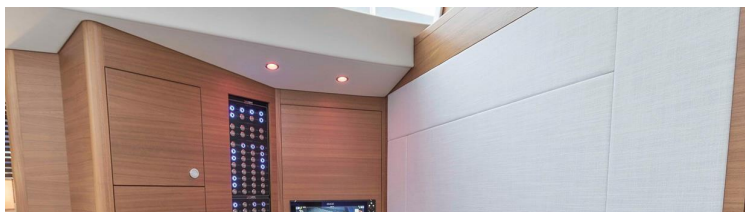
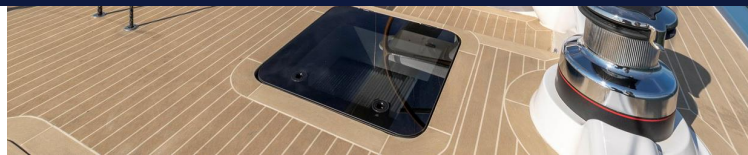
OVERVIEW

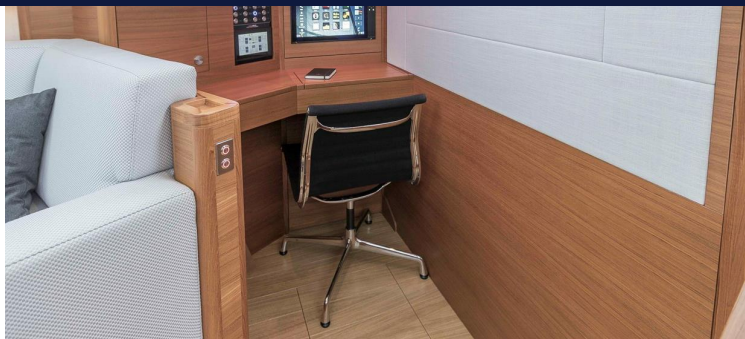
TYPE	Sail	DESIGNER	N/A
LENGTH	62' 10" (19.15m)	SPEED	
BEAM	17' 5" (5.3m)	ENGINES	1x, Volvo Penta, D3-150, 150 HP
DRAFT	8' 9" (2.65m)	RANGE	
BUILDER	RSC YACHTS	FLAG	N/A
HULL MATERIAL	Aluminum	TAXES PAID	N/A

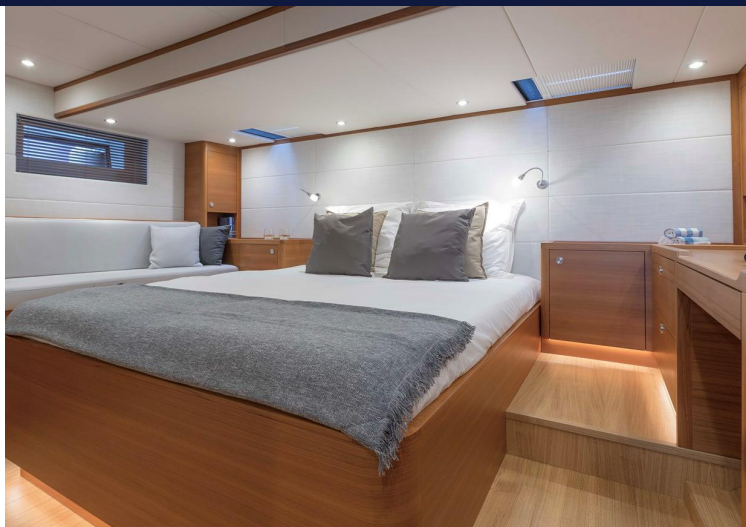
ASKING PRICE \$2,081,341 USD

TJB SUPER YACHTS LTD SVC ACCOUNT M: T: E: INFO120120220343@TJB-SUPER-YACHTS-LTD.COM









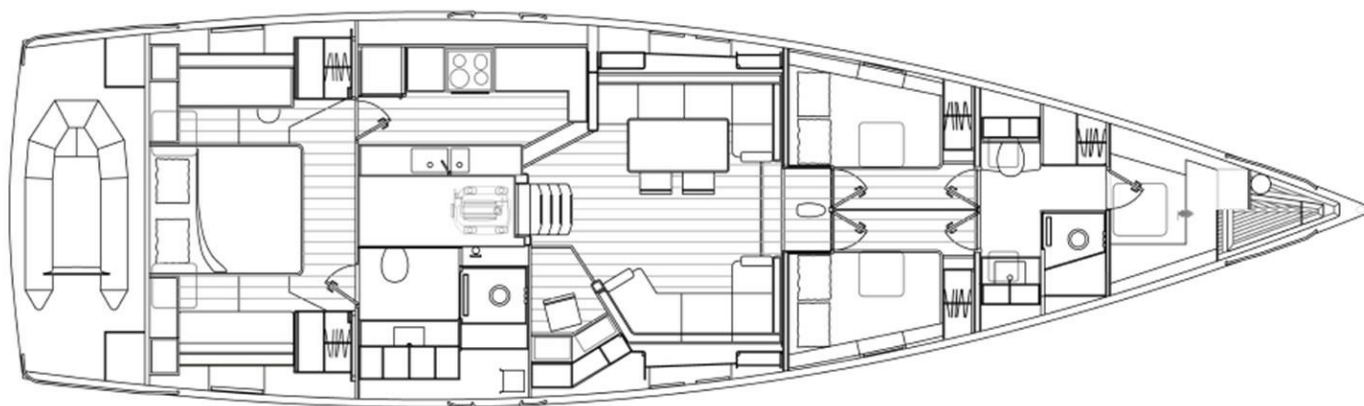




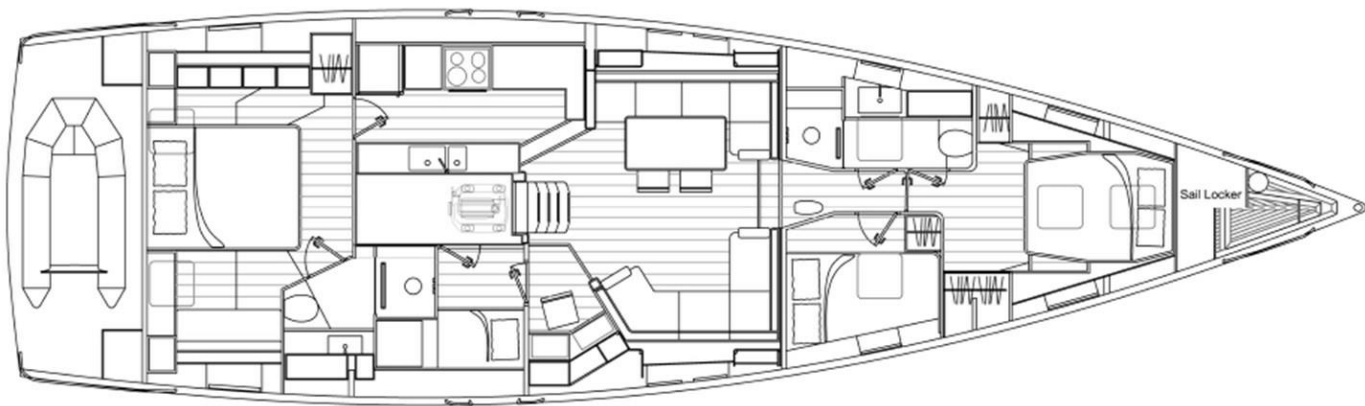
RSC 1900



RSC1900 Standard Interior



RSC1900 Alternative Interior A - Option



DETAILED SPECIFICATIONS

MAIN CHARACTERISTICS

TYPE	SAIL
COUNTRY OF REGISTRY	N/A
PORT OF REGISTRY BUILT	2019
REFIT	N/A
BUILDER	RSC YACHTS
NAVAL ARCHITECH	N/A
EXTERIOR DESIGNER	KEES VAN DE STADT
INTERIOR DESIGNER	N/A
LWL	56' 10" (17.3M)
BEAM	17' 5" (5.3M)
MAX DRAFT	8' 9" (2.65M)
CONSTRUCTION	N/A
HELIDECKS/HANGER	N/A

Disclaimer

The company offers the details of this vessel in good faith but cannot guarantee or warrant the accuracy of this information nor warrant the condition of the vessel. A buyer should instruct their agents, or their surveyors, to investigate such details as the buyer desires validated. This vessel is offered subject to prior sale, price change, withdrawal without notice, and tax when applicable.



RSC 1900



RSC 1900

+44 (0) 207 183 4393 • ENQUIRIES@TJBSUPERYACHTS.COM

24.11 CODA STUDIOS, 189 MUNSTER ROAD, FULHAM, LONDON, SW6 6AW, UK