

# MAXIMUS



<b>LOA:</b>	525' (160m)	<b>Delivery/Model Year:</b>	2028
<b>Beam:</b>	72' 3" (22m)	<b>Model:</b>	IPI160
<b>Tonnage:</b>	13,500.00	<b>Builder:</b>	CUSTOM
<b>Speed:</b>	12 Knots 19 Knots	<b>Type:</b>	Motor Yacht Displacement
<b>Flag:</b>	Cayman Islands	<b>Staterooms:</b>	24
<b>Location:</b>	Vigo, Galicia Spain	<b>Fuel Cap:</b>	1000000 L (264172.05 Gal)
<b>VAT Paid:</b>		<b>Water Cap:</b>	100000 L (26417.21 Gal)
		<b>Engines:</b>	2x, ABB, 8200 HP
		<b>Price:</b>	(\$437,454,769 USD est.) €405,000,000 EUR

Generated On 3/28/2024 6:03 PM by SPENCER SHIP MONACO

**SPENCER SHIP MONACO**

**SPENCER SHIP MONACO**

info@spencership.com  
<https://www.spencership.com/>

**MAXIMUS**

Page 1 of 14



### Additional Specifications For MAXIMUS:

<b>LOA:</b>	525' (160m)	<b>Delivery/Model</b>	2028
<b>Beam:</b>	72' 3" (22m)	<b>Year:</b>	
<b>Min Draft:</b>	17' 9" (5.4m)	<b>Year Built:</b>	2029
<b>Hull Material:</b>	Steel	<b>Builder:</b>	CUSTOM
<b>Superstructure:</b>	Aluminum	<b>Model:</b>	IPI160
<b>Hull Config:</b>	Displacement w/ Bulbous Bow	<b>Type:</b>	Motor Yacht Displacement
<b>Deck Material:</b>	Teak over Aluminum	<b>Engines:</b>	8200 HP, Twin, 2029, Inboard, Diesel/Electric, ABB,
<b>Tonnage:</b>	13,500.00	<b>Staterooms:</b>	24
<b>Range At Cruise</b>	12500	<b>Sleeps:</b>	48
<b>Speed:</b>		<b>Heads:</b>	30
<b>Range At Max</b>	7125	<b>Captain Cabin:</b>	Yes
<b>Speed:</b>		<b>Classifications:</b>	Lloyd's Lloyds +100A1 SSC, Yacht (P), Mono, G6 Ice Class 1A LMC, UMS, DP (CM) – (Except during navigation in Ice)
<b>Speed:</b>	Cruising 12 Knots Max 19 Knots	<b>MCA:</b> Yes	<b>ISM:</b> Yes
<b>Ext Designer:</b>	Gill Schmid Design		
<b>Fuel Capacity:</b>	1000000 L (264172.05 Gal)		
<b>Water Capacity:</b>	100000 L (26417.21 Gal)		
<b>Holding Tank:</b>	85000 L (22454.62 Gal)		
<b>Flag:</b>	Cayman Islands		
<b>Location:</b>	Vigo, Galicia Spain		
<b>Price:</b>	(\$437,454,769 USD est.) €405,000,000 EUR		



## **Features**

eed/ cruise speed: 20 knots/ 16 knots

- Hull type: twin screw full displacement motor yacht
- Exterior & interior design: impossible productions ink LLC
- Hull material: steel
- Superstructure material: aluminum alloy
- 2 helicopter landings with 1 helicopter hangar
- Grand double height entrance lobby with full height aquarium
- 2 expansive tender garages
- Casino and bar space
- Double height nightclub with glass bottomed pool and opening hull balconies
- Full height pool in spa area with opening hull balconies
- Expansive gym and sauna space with opening hull balconies
- 3D cinema space
- Outdoor swimming pool
- 2 outdoor Jacuzzis that extend out past the hull and over open water
- Mid ship access to water via stairs in hull
- Smoking cocktail lounge
- 2 beach club spaces both facing aft
- 3 show kitchens on tank deck, guest deck and bridge deck
- Expansive humidor and showcase wine vault
- Formal dining to cater 30+ guests
- 3 separate meeting room spaces
- Bow jacuzzi and lounging
- 270 degree observation lounge at bow

## **1. DIMENSIONS**

**LOA 160,0 m**

**Beam 22,0 M**

**Draught 5,4 m**

**GRT 13,500**



## **2. General Information**

### **Subject to final specifications and contract**

DELIVERY Approximately 48 months from contract

BUILDER Shipyard of choice Northern Spanish Shipyard  
recommended for Spanish Tax Lease Reduction Scheme that provides up to 20%  
reduction of overall build costs.

NAVAL ARCHITECT Gill Schmid Design  
EXTERIOR DESIGNER Gill Schmid Design /TBD

INTERIOR DESIGNER Clients choice

CONSTRUCTION Steel hull and aluminium superstructure,  
composite funnel, teak decks  
Solidt decking on 2 x Helicopter decks and hangar

CLASSIFICATION Lloyds +100A1 SSC, Yacht (P), Mono, G6  
Ice Class 1A LMC, UMS, DP (CM) – (Except during navigation in Ice)

## **3. Machinery**

### **Subject to final specifications and contract**

Diesel Electric Propulsion  
MAIN PROPULSION 2 x ABB Industry AG E-motors,  
3300V, 2x626A, 3-phase, 6100kW  
SPEEDS Maximum speed 19 knots  
Cruising speed 18 knots  
Economical speed 12.5 knots  
RANGE Approximate ranges:  
9.5 knots (2 DG's – 16CBM/24H) 14250 NM  
12.5 knots (3 DG's – 24CBM/24H) 12500 NM  
19.0 knots (8DG's – 64 CBM/24H) 7125 NM  
BOW THRUSTERS 2 x Schottel transverse thruster units  
E-motors; 2 x ABB 350kW  
2 x Zhenjiang Propellers, 3 blade, 1240 OD  
STERN THRUSTER 1 x Schottel rudder propeller unit  
E-motor; 1 x ABB 450kW  
1 x Fundiluz propeller, 3 blade, 1350 OD  
GENERATORS 8 x ABB AMG 500L4L, prime mover MTU diesel  
engine.  
Output 2300kVA, Rated voltage 3300, Power  
factor 0.8, Rated current 402A, Rated speed  
1800 rpm, Frequency 60 Hz. Efficiency at 100%  
rated power 96%  
SHAFTS & PROPELLERS 2 x VATECH twin pitch propeller, max  
engine power for summer operation;  
5855 kW (high pitch), max engine  
power for winter operation 4250 kW  
(low pitch, pitch reduction -3.5 deg).  
Propeller OD 3050 mm  
Classification, LRS + 100 A1 SCC  
Yacht, Ice class 1A

Generated On 3/28/2024 6:03 PM by SPENCER SHIP MONACO



5 blades

STABILIZER 1 x set of SKF Type Z, Z600-595-13, S-mode/Smode operational.

Main HPU power 90kW x 2 per fin

Gyro; Simplex-Compact Solid state, type; H45

G15

SIMATIC S7-300 controller

STEERING GEAR 2 x Becker

AUXILIARY MACHINERY & ELECTRICAL SYSTEM

EMERGENCY 1 x MTU 12VTA , 382kw at 1800 rpm

GENERATOR Alternator AVK 416 kVA at 1800 rpm. 400v AC/

50 Hz/3-phase

HV TRANSFORMER 2 x ABB RESIBLOC, Nominal power: 4600kVA,

Primary Voltage/current; 3300V/850A,

Secondary voltage/current; 450V/5902A

LV TRANSFORMER 2 x J. Schneider Electrotechnik GmbH. Power

rating: 560kVA, Frequency: 60Hz, output

voltage: 3 x 208V, output current: 1555A

LV VOLTAGE ELECTRICITY

440v AC, 3-phase, 60 Hz

230V AC, 110V ACs single phase, 60 Hz

(lighting, domestic equipment, control circuits

and nautical equipment) 24V DC

The installation will be a 3-phase, four wire

system, neutral earthed, 400v/230v AC, 50 Hz

SHORE POWER LV 440V AC, 3-phase breaker, 1500A min required

EUROPEAN CONVERTER Borri, Output power; 5 kVA, 1 x 230V

single phase, 50 Hz

#### **4. Capacities**

##### **Subject to final specifications and contract**

TANK CAPACITIES (approximate)

FUEL 1,000,000 liters/ 264,000 US gallons

TECHNICAL WATER 85,000 liters/ 22,500 US gallons

WATER 100,000 liters/ 26,500 US gallons



## **5. Navigation Equipment**

### **Subject to final specifications and contract**

The navigational bridge is based upon the K-Bridge Kongsberg system which consists of four independent ECDIS units and one conning station. All of the ECDIS units are Multi-Functional Displays and so can be used for planning as well as navigation and monitoring. Interchangeable from ECDIS to RADAR; they form part of the integrated bridge system that synergizes all of the navigational aids to assist in safe navigation. Incorporated in this is an auto pilot, Follow Up and Non follow up steering methods and the K-Pos Kongsberg Dynamic Positioning system.

MAGNETIC COMPASS Sperry Marine 2060 Independent magnetic compass

GYRO COMPASS NAVIGAT 200 Multi Mechanical Gyro

FIBER OPTIC COMPASS NAVIGAT 3000 Fiber Optic Gyrocompass

DYNAMIC POSITIONING Kongsberg K-Pos system with three independent stations

AUTOMATIC PILOT Integrated Navigation System type

Kongsberg K-Bridge features:

Fully integrated radar and ECDIS operation

Consistent radar, chart and conning displays

Interactive on-screen operation

Versatile voyage planning capabilities and

Autopilot with track control, operated from the

Multifunctional Display

LOG Naviknot 400 Doppler Speed Log

ECHO SOUNDER Sperry Marine ES 5100

RADAR 3 x ARPA radars (1 x S-band and 2 x X-band)

NAV. DISPLAY 4 x Multi- Functional Display Units / ECDIS K-Bridge

GPS 2 x DGPS SAAB R5 Supreme, 1 x FUGRO GPS

AIS Kongsberg AIS 300, Integrated into K-Bridge

NAVTEX Furuno Navtex NX-700



## **6. Deck Equipment**

### **Subject to final specifications and contract**

ANCHOR WINDLASS 2 x type 23, size 24 Steen stainless steel  
vertical anchor  
windlasses each with vertical warping  
capstans  
AFT WARPING CAPSTANS 2 x electrically driven Steen capstans  
2 x on the aft deck 3, 1x one PS, and 1 x  
on SB  
AFT ANCHOR 1 x Electric yacht anchor winch type 01  
size 16 with 6 x 27.5m chain  
FORWARD ANCHORS 2 x POOL N fully balanced stockless High  
Holding Power anchor  
3200Kg each with 9 x 27,5m chain each side  
BOAT CRANE & DAVITS Davit International hydraulic lifeboat system  
Two sets Lifeboat Handling System Type DTT.  
SP.95 Davits with winch 12.18.33 SWL per  
arm 48.0 KN  
Davit International Raft Handling system  
Two Type D-RC.21/3,65/QR Davits with winch  
04.08.10 SWL 21.0 KN  
2 x Cramm Hydraulic davit cranes located on  
deck 4 forward for Jet ski launch and stores.  
Each rated to 1 ton SWL  
Marina Gantry crane rated to 40 tons SWL  
2 x Aljo Helideck stores cranes retractable  
flush into superstructure. Each rated to 3 ton  
SWL  
PASSERELLE 2 x Cramm telescopic slewing ladders,  
hydraulic operated port and starboard  
SIDE BOARDING LADDERS 2 x boarding side ladders  
SEARCHLIGHT 2 x searchlights on main mast, Xenon type  
ACR- RCL600A  
AWNING Removable awning on owner's deck 7  
forward

## **7. Accommodation**

Full Owners Deck

Full VIP Deck

(9) double guest suites

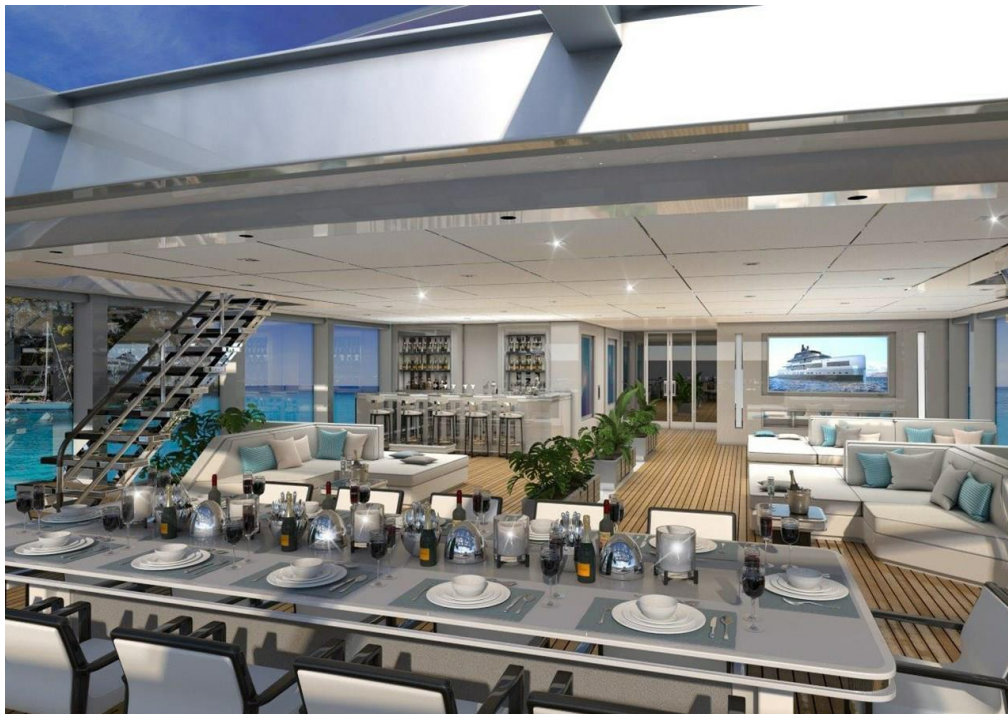
(64) crew



## MAXIMUS with Helicopter



## MAXIMUS\_alfresco dining

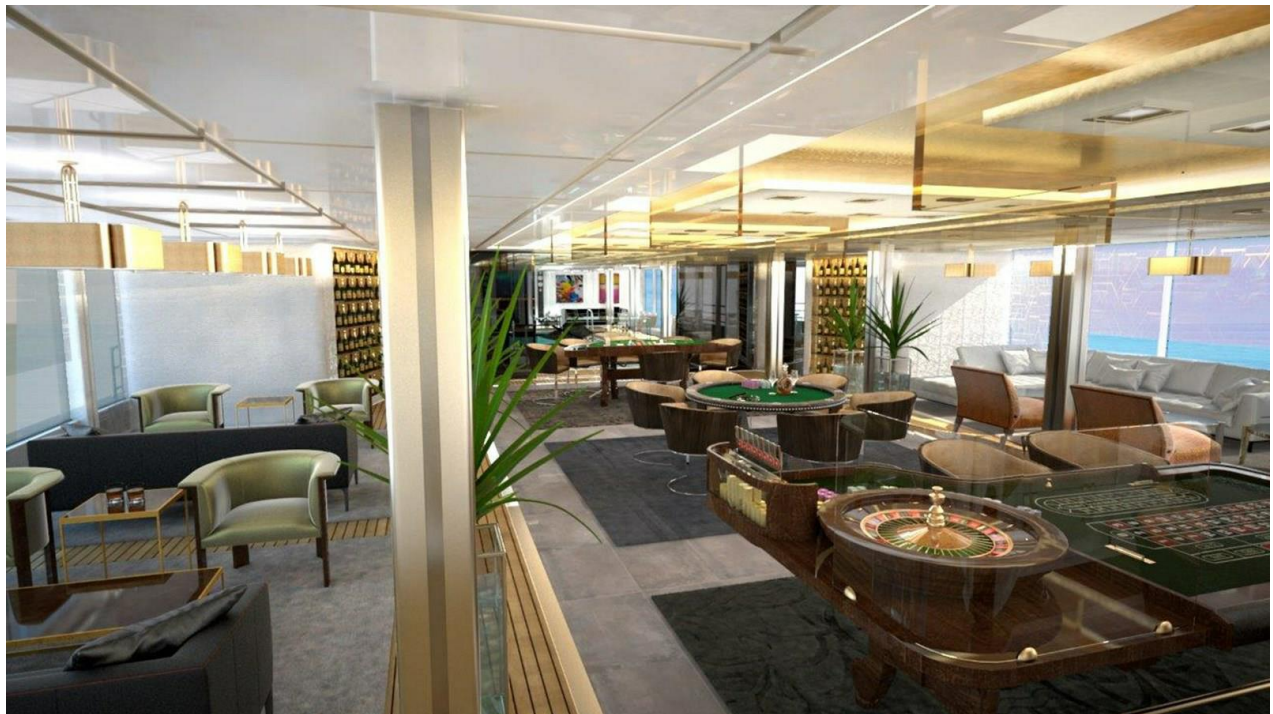




**MAXIMUS\_beachclub**



**MAXIMUS\_casino**





**MAXIMUS\_cocktail lounge**



**MAXIMUS\_guest lounge 01**





**MAXIMUS\_guest lounge 02**



**MAXIMUS\_guest**





**MAXIMUS\_outdoor lounge 01**



**MAXIMUS\_outdoor lounge 02**





**MAXIMUS\_outdoor lounge 03**



**MAXIMUS\_VIP**





