



world yacht group

Experts in luxury yachts

## NOE



<b>LOA:</b>	93' 10" (28.6m)	<b>Delivery/Model</b>	2013
<b>Beam:</b>	21' 4" (6.5m)	<b>Year:</b>	
<b>Max Draft:</b>	4' 4" (1.3m)	<b>Builder:</b>	COUACH
<b>Tonnage:</b>	68.00	<b>Type:</b>	Motor Yacht Motor Yacht
<b>Speed:</b>	28 Knots 38 Knots	<b>Staterooms:</b>	4
<b>Flag:</b>	French	<b>Fuel Cap:</b>	8500 L (2245.46 Gal)
<b>Location:</b>	Grimaud, Provence-Alpes- Cote-d'Azur France	<b>Water Cap:</b>	1500 L (396.26 Gal)
<b>VAT Paid:</b>		<b>Engines:</b>	2x, MTU, 16V 2000 M93, 2400 HP
		<b>Price:</b>	(\$1,925,473 USD est.) €1,700,000 EUR

Generated On 5/29/2025 12:36 AM by WORLD YACHT GROUP SVC Account

**WORLD YACHT GROUP USA**

**WORLD YACHT GROUP SVC**

**NOE**

**Account**

**info160920210306@world-yacht-  
group.com  
worldyachtgroup.com**

Page 1 of 13

### Additional Specifications For NOE:

<b>LOA:</b>	93' 10" (28.6m)	<b>Delivery/Model</b>	2013
<b>Beam:</b>	21' 4" (6.5m)	<b>Year:</b>	
<b>Min Draft:</b>	4' 4" (1.3m)	<b>Year Built:</b>	2013
<b>Max Draft:</b>	4' 4" (1.3m)	<b>Builder:</b>	COUACH
<b>Hull Material:</b>	GRP	<b>Type:</b>	Motor Yacht Motor Yacht
<b>Superstructure:</b>	Carbon Fiber	<b>Engines:</b>	2400 HP,Twin, 2013, Inboard, Diesel, MTU, 16V 2000 M93, 1100hrs / 1100hrs
<b>Hull Config:</b>	Monohull	<b>Staterooms:</b>	4
<b>Hull Designer:</b>	Guy Couach	<b>Sleeps:</b>	8
<b>Deck Material:</b>	Teak	<b>Heads:</b>	4
<b>Tonnage:</b>	68.00	<b>Crew Quarters:</b>	2
<b>Range At Cruise</b>		<b>Crew Berths:</b>	2
<b>Speed:</b>		<b>Captain Cabin:</b>	No
<b>Range At Max</b>		<b>Classifications:</b>	
<b>Speed:</b>	Cruising 28 Knots	<b>MCA:</b>	<b>ISM:</b>
	Max 38 Knots		
<b>Int Designer:</b>	Guy Couach		
<b>Fuel Capacity:</b>	8500 L (2245.46 Gal)		
<b>Water Capacity:</b>	1500 L (396.26 Gal)		
<b>Holding Tank:</b>	1750 L (462.3 Gal)		
<b>Flag:</b>	French		
<b>Location:</b>	Grimaud, Provence-Alpes-Cote- d'Azur France		
<b>Price:</b>	(\$1,925,473 USD est.) €1,700,000 EUR		

### **General info**

Combining a sporty exterior and a bright welcoming interior, NOE will make you feel on a much larger boat. Her planing hull has been designed for performance, offering an outstanding seaworthiness behavior as well as unrivaled comfort thanks to her underway & at anchor stabilization. Built on-order by Couach shipyard in 2013, NOE has been privately used ever since and is entering the market in pristine condition.

### **KEY FEATURES**

- Stabilizers underway & at anchor
- Pristine condition
- Sporty and seaworthy
- Hydraulic aft platform
- Low engine and generators hours
- Privately used

noe-motor-yacht-guy-couach-2800-open\_003



noe-motor-yacht-guy-couach-2800-open\_002



Generated On 5/29/2025 12:36 AM by WORLD YACHT GROUP SVC Account

**WORLD YACHT GROUP USA**

**WORLD YACHT GROUP SVC**

**NOE**

**Account**

**info160920210306@world-yacht-  
group.com**

**worldyachtgroup.com**

Page 4 of 13

noe-motor-yacht-guy-couach-2800-open\_005



noe-motor-yacht-guy-couach-2800-open\_007



noe-motor-yacht-guy-couach-2800-open\_006



large\_4057785



Generated On 5/29/2025 12:36 AM by WORLD YACHT GROUP SVC Account

**WORLD YACHT GROUP USA**

**WORLD YACHT GROUP SVC**

**NOE**

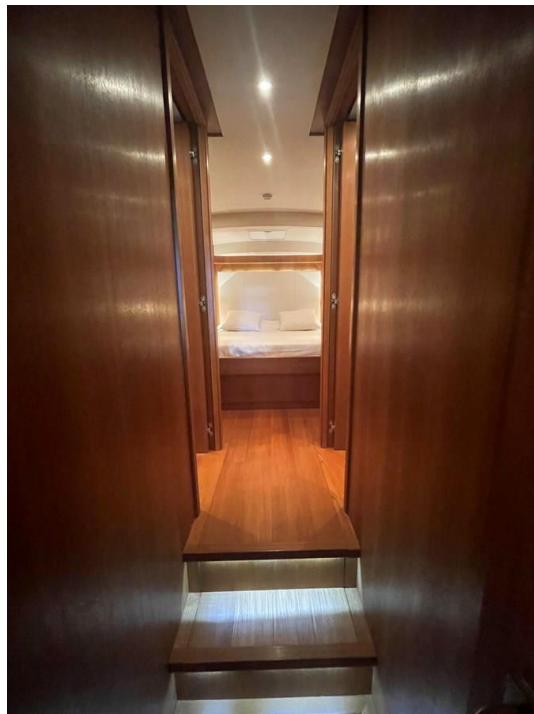
**Account**  
**info160920210306@world-yacht-**  
**group.com**  
**worldyachtgroup.com**

Page 6 of 13

large\_4057780



large\_4057787



large\_4057788



large\_4057789



large\_4057801



large\_4057802

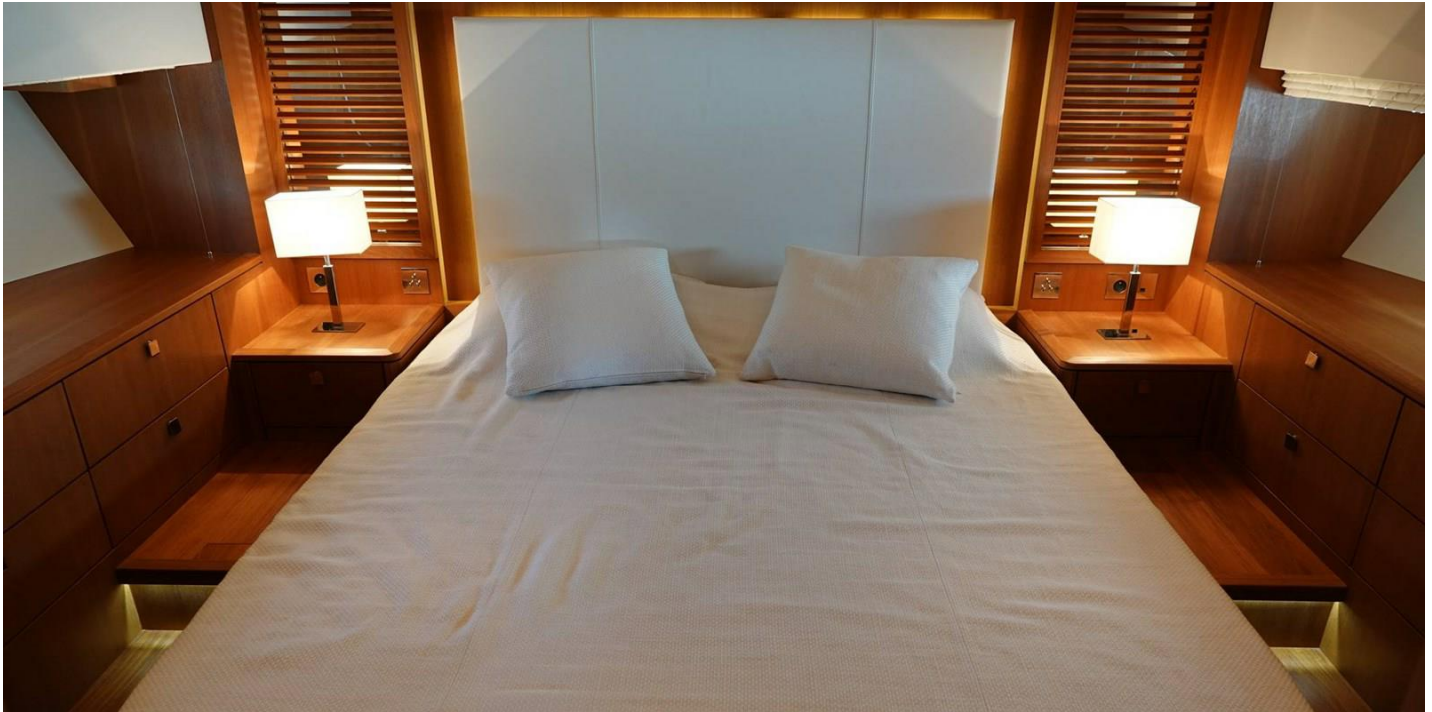


large\_4057800



large\_4057805





## Layout



Generated On 5/29/2025 12:36 AM by WORLD YACHT GROUP SVC Account

**WORLD YACHT GROUP USA**

**WORLD YACHT GROUP SVC**

**NOE**

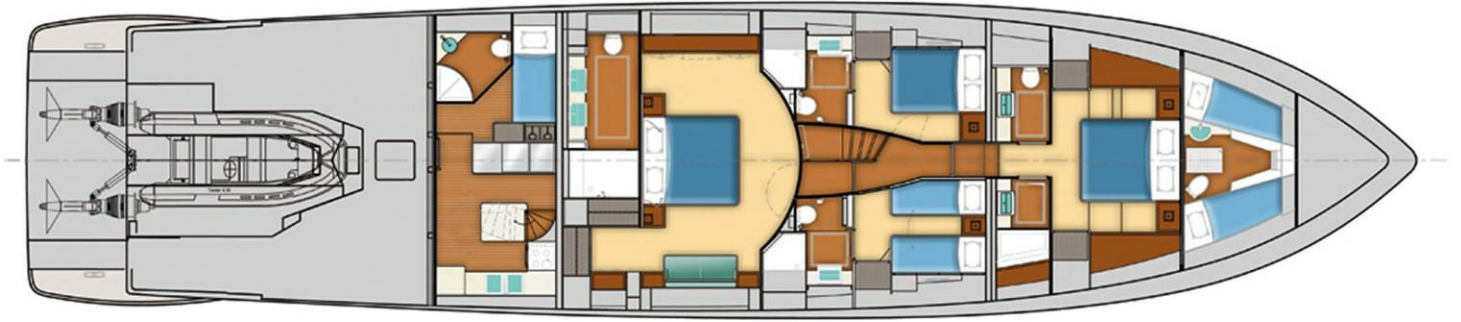
**Account**

**info160920210306@world-yacht-  
group.com**

**worldyachtgroup.com**

Page 12 of 13

## Layout 2



Generated On 5/29/2025 12:36 AM by WORLD YACHT GROUP SVC Account

**WORLD YACHT GROUP USA**

**WORLD YACHT GROUP SVC**

**NOE**

**Account**  
**info160920210306@world-yacht-**  
**group.com**  
**worldyachtgroup.com**

Page 13 of 13