



Type	Motor Yacht Flybridge	Classification	--
Top	--	Class Type	--
Model	NC1095 Fly	Builder	JEANNEAU
Manuf. Year	2026	Naval Architect	--
Refit Year	--	Interior Design	--
LOA	34' 3" (10.44m)	Hull	Fiberglass
Beam	11' 1" (3.38m)	Deck	--
Draft Min/Max	-- / 2' 3" (0.69m)	Engines	2x, Yamaha, F300NSB2 w/Joystick, 300 HP
GRT	12809 Lbs	Max Speed	--
Fuel	212 Gal	Cruise Speed	--
Water	--	Range	--
Flag	--	Accommodations	3 strms

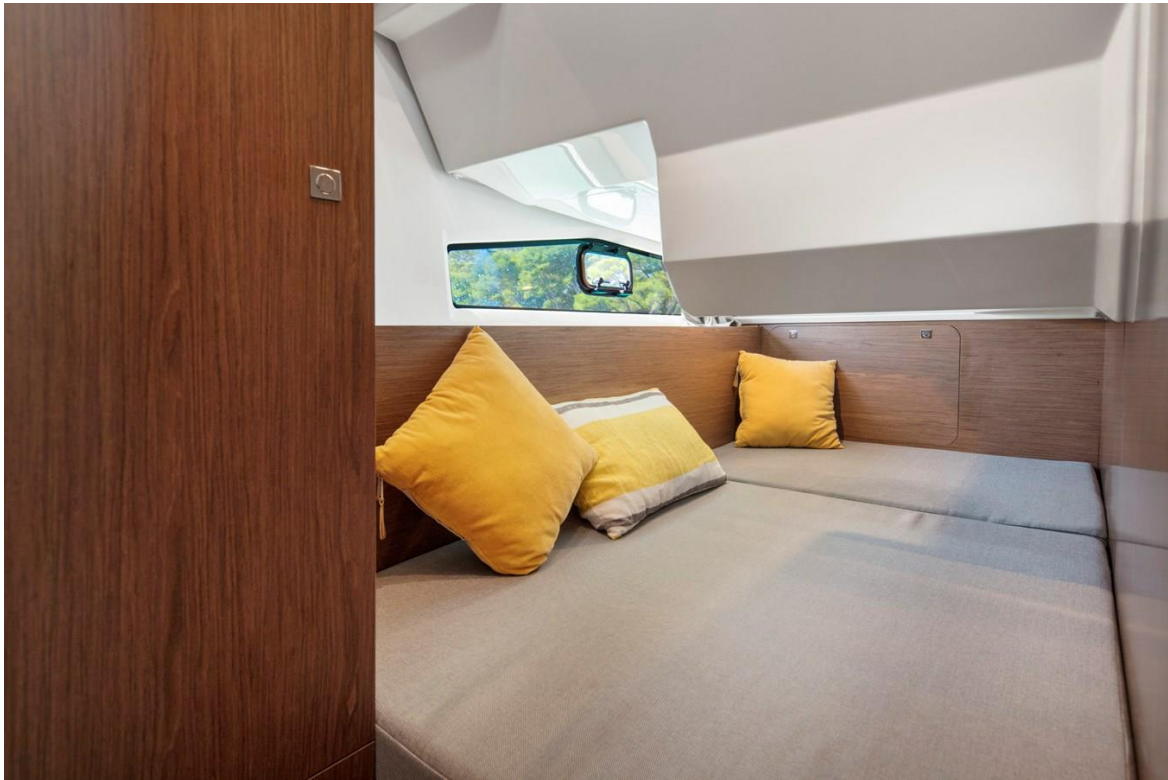
ASKING PRICE: **Price on Application**















## Standard Key Features

- Colors: Exterior: White
- Colors: Upholstery: Leatherette Dolce Artesian
- Electric Bow Windlass
- Cockpit Shower (Hot & Cold Water)
- Ambiance LED Lights (Salon & Cabins)
- LED Lights in Cockpit Floor
- LED Lights in Flybridge Floor
- Electrical Trim Tabs Lenco
- 110V Water Heater
- Interior Curtains
- Stern Mooring Cleats for Cross Docking
- 2-Rear Cockpit Worklights
- Modular Cockpit w/Easy Side Access
- Recessed side-deck on starboard
- Aft sliding side door and skylights
- 2 cabin + Optional 3rd cabin or storage

## Optional Features

- Trim Level Premiere
- Comfort Pack
- Electronics Pack Upgraded
- Audio Pack Fusion
- Mooring & Anchoring Kit
- Cockpit Sun Awning
- Bimini on Flybridge
- 2-Rod Holders
- 2-Fiberglass Cockpit Tables
- Flybridge Table+Cushion for Long Chair
- Front Sunpad on Flybridge & Cover
- Front Sundeck w/Lifting Backrests
- Bow Thruster w/Double Control
- Add't Water Tank
- Generator Panda Diesel 6.4kva
- Underwater Lights
- Add't Fridge in Storage Compartment
- Microwave Oven
- Vitroceramic Cooktop
- Air Conditioning

- Mattress for 3rd Cabin
- Double Berth Complement in Salon
- Overhead Storage Locker in Galley, Salon, & Front Cabin
- Ring for Trailer
- Trim Tabs- Zipwake
- Horn (Wheelhouse & Fly)