



world yacht group

Experts in luxury yachts

# ALECTO



**LOA:** 82' 5" (25.1m)

**Beam:** 20' 5" (6.2m)

**Max Draft:** 6' (1.83m)

**Tonnage:** 0.00

**Speed:** 14 Knots  
18 Knots

**Flag:** Turkish

**Location:** Istanbul, Istanbul  
Turkey

**VAT Paid:** No Duty Paid

**Delivery/Model** 2022

**Year:**

**Model:** VICEM CLASSIC 82

**Builder:** VICEM

**Type:** Motor Yacht

**Staterooms:** 3

**Fuel Cap:** 6000 L (1585.03 Gal)

**Water Cap:** 2500 L (660.43 Gal)

**Engines:** 2x, Volvo Penta, D13, 900  
HP

**Price:** \$3,900,000 USD

Generated On 5/9/2025 3:28 AM by WORLD YACHT GROUP SVC Account

**WORLD YACHT GROUP USA**

**WORLD YACHT GROUP SVC**

**ALECTO**

**Account**

**info160920210306@world-yacht-  
group.com**

**worldyachtgroup.com**

Page 1 of 13

### Additional Specifications For ALECTO:

<b>LOA:</b>	82' 5" (25.1m)	<b>Delivery/Model</b>	2022
<b>Beam:</b>	20' 5" (6.2m)	<b>Year:</b>	
<b>Min Draft:</b>	6' (1.83m)	<b>Year Built:</b>	2022
<b>Max Draft:</b>	6' (1.83m)	<b>Builder:</b>	VICEM
<b>Hull Material:</b>	Cold Molded	<b>Model:</b>	VICEM CLASSIC 82
<b>Deck Material:</b>	Teak	<b>Type:</b>	Motor Yacht
<b>Range At Cruise</b>	325	<b>Engines:</b>	900 HP, Twin, Volvo Penta, D13,
<b>Speed:</b>		<b>Staterooms:</b>	3
<b>Range At Max</b>		<b>Sleeps:</b>	6
<b>Speed:</b>		<b>Crew Quarters:</b>	1
<b>Speed:</b>	Cruising 14 Knots	<b>Crew Berths:</b>	2
	Max 18 Knots	<b>Captain Cabin:</b>	No
<b>Int Designer:</b>	VICEM Yachts	<b>Classifications:</b>	
<b>Ext Designer:</b>	VICEM Yachts	<b>MCA:</b> No	<b>ISM:</b> No
<b>Fuel Capacity:</b>	6000 L (1585.03 Gal)		
<b>Water Capacity:</b>	2500 L (660.43 Gal)		
<b>Holding Tank:</b>	1000 L (264.17 Gal)		
<b>Flag:</b>	Turkish		
<b>Location:</b>	Istanbul, Istanbul		
	Turkey		
<b>Price:</b>	\$3,900,000 USD		
<b>Tax Status:</b>	No Duty Paid		

## **INTRODUCTION**

This beautiful VICEM 82 with classic Down-East styling and lovely mahogany interior was delivered only a few weeks ago. She is the flagship of the VICEM Classic line and has been fitted out with many extras such as a fully custom designed flybridge and an Opacmare hydraulic swimming platform.

## **INTERIOR DESCRIPTION**

Beautiful classic looking mahogany interior with satin finish, veneered wall coverings throughout and carpet flooring in all staterooms.

### **SALON/WHEELHOUSE**

Wine cooler  
Bottle and glass storage.  
Couches, for salon.  
Countertop lockers.  
Dinette table, for 8 guests, special designed.  
Drawers, cutlery and storage.  
Full storage cabinet, with shelf systems for glass, bottle, dinner set.  
Special ceiling details, with led lighting.  
Special leather top for wheelhouse.  
Sliding salon door system, custom made mahogany covered stainless steel.  
Telescopic pedestal, for wheelhouse table, stainless steel.  
Helm seat, wood for two persons

### **CREW AREA**

Accessories, paper holder, towel rack, rings, hooks, chrome.  
Single beds with storages.  
Hanging lockers, lines with shelves and micro switch for LED closet light.  
Toilet Head, TECMA  
Mattresses, foam.  
Sinks, under counter mount, stainless steel.  
Storage in heads, with lockers and drawers.

### **OWNER STATEROOM**

Double bed (1.80m width)  
Mattress foam, premium quality.  
Mirror, premium decor glass.  
Overhead panels, leather.  
Hanging lockers, lined with shelves and micro switch for LED closet light  
Storage in head, with lockers and drawers.  
Walk in closet, with special shelf systems.  
Accessories, paper holder, towel rack, rings, hooks, chrome.  
Shower stall w rainbow shower and wood framed door, laquer painted walls, tray with corian grill  
Basin mixer  
Countertop, for head, PVC based  
Hand shower basic and finish set  
Head overheads, lacquered painted  
Toilet marine electric TECMA 24 VDC

### **VIP STATEROOM**

Double bed (1.80m width)  
Mattress foam, premium quality.  
Mirror, premium decor glass.  
Overhead panels, leather.  
Hanging lockers, lined with shelves and micro switch for LED closet light  
Storage in head, with lockers and drawers.  
Walk in closet, with special shelf systems.  
Accessories, paper holder, towel rack, rings, hooks, chrome.  
Shower stall w rainbow shower and wood framed door, laquer painted walls, tray with corian grill

Generated On 5/9/2025 3:28 AM by WORLD YACHT GROUP SVC Account

Basin mixer  
Countertop, for head, PVC based  
Hand shower basic and finish set  
Head overheads, lacquered painted  
Toilet marine electric TECMA 24 VDC

#### **GUEST STATEROOM**

Double bed (1.80m width) / 2X Single bed  
Mattress foam, premium quality.  
Mirror, premium decor glass.  
Overhead panels, leather.  
Hanging lockers, lined with shelves and micro switch for LED closet light  
Storage in head, with lockers and drawers.  
Walk in closet, with special shelf systems.  
Accessories, paper holder, towel rack, rings, hooks, chrome.  
Shower stall w rainbow shower and wood framed door, laquer painted walls, tray with corian grill  
Basin mixer  
Countertop, for head, PVC based  
Hand shower basic and finish set  
Head overheads, lacquered painted  
Toilet marine electric TECMA 24 VDC

#### **PROPULSION&STEERING**

Conventional Shaft Drives:  
Duplex Shafts with SS Brackett and GRP Sterntube  
Custom Designed 4 Blades NiBrAl Propellers  
SIDE POWER Bow and Stern thrusters  
Trim tabs

Steering System:  
Electro Hydraulic Steering System

#### **PAINT JOB**

Awlgrip - AwlCraft 2000

#### **SAFETY&SECURITY**

Fire extinguishers for galley, engine room and staterooms

#### **COMM&NAVIGATION**

2x Glass Cockpit Displays, GARMIN MFD 8616 16" wheelhouse  
2x Glass Cockpit Displays, GARMIN MFD 8612 12" flybridge  
Radar - GARMIN GMR 624 XHD2  
Autopilot - GARMIN Reactor 40 with GHC 20 Control Unit  
Autopilot - GARMIN GPH 2L  
Autopilot display - GARMIN GHC20  
Transducer - GARMIN GSD24  
Data instruments - GARMIN GM120  
2x VHF - GARMIN VHF 315 Marine Radio  
GPS Antenna - GARMIN 19x NMEA 2000  
2x VHF Antenna - SHEAKESPARE  
Rudder angle feedback

## **ELECTRICAL**

AC Electrical system - 220 VAC, 60 Hz. 24 VDC, 12 VDC (USA Compliant)

DC Electrical system - 12V DC, 24V DC

Inverter, 110/220 VAC

Circuit breakers - 12V DC, 24V DC, 220V AC, 110V AC, 380V AC

VIMAR 110 VAC outlets, modular with decor cover plates

4x Gel Battery 200Ah for engines starting

1x Gel Battery 90 Ah for generator

8x Gel Battery Cell type 200Ah for service

4x Flood lights

2x Water heater, 11 gals/40lts

Underwater lights

Glendenning cable coiler with 75ft 50A cable

LED lights

JABSCO fresh water shore connection

EXALTO windshield wipers

## **MECHANICAL**

DOMETIC Chiller system 96000 BTU

Engine Room ventilation system, DELTA T with automatic-manual control

## **DECK**

LOFRANZ 24 VDC windlass

Anchor chains and swivels, 150m

Cockpit cover, waterproof

Cushions and seating, soft foam and fabric

Grab rails, stainless steel

Locker, aft deck storage

2x Custom fridge, aft cockpit

Isoterm refrigerator, flybridge

Side doors on Handrails

Hydraulic swim platform with extension, laminated wood with painted finish, teak flooring

Swim ladder, stainless steel

Teak decking, in cockpit

Shower on transom

## **GALLEY&LAUNDRY**

### **GALLEY**

Cabinets: under- and over- countertop

Cooktop

Bosch Refrigerator

Freezer

Ice maker

Combo—microwave oven

Dishwasher

Furniture - Varnished mahogany

Sink - satin finish

Countertop: Corian

### **LAUNDRY**

Washer

Dryer

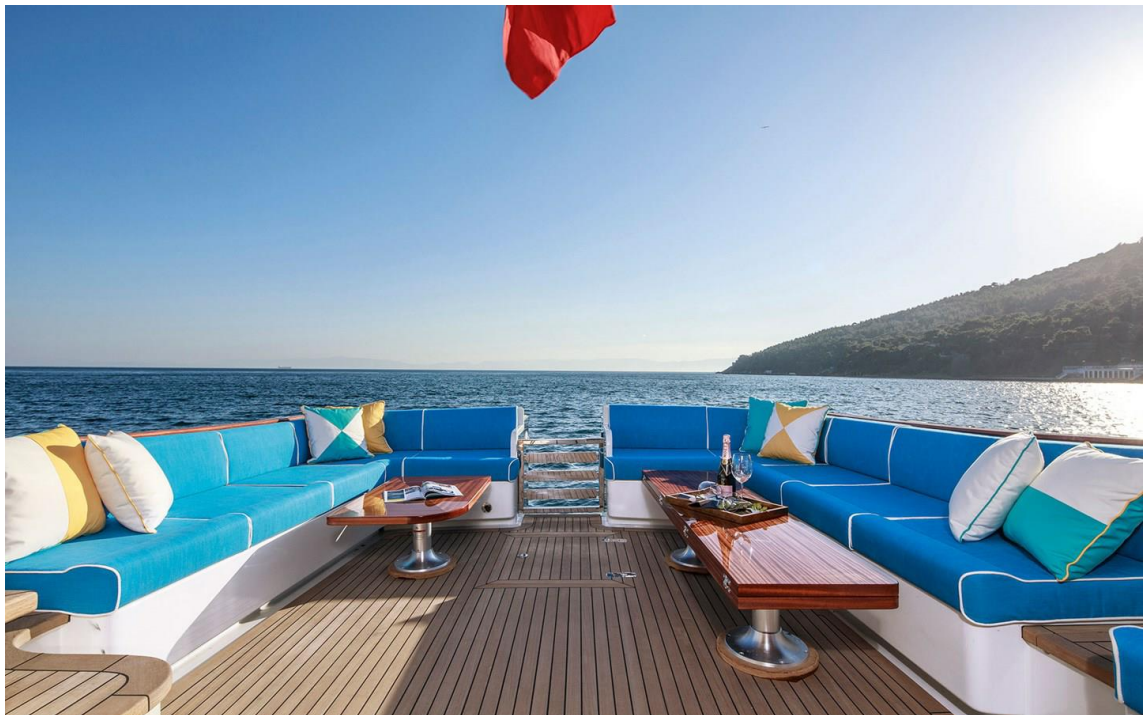
**AUDIOVISUAL**

Salon: 55 inch 4KUHD Smart TV  
Guest cabin: 32 inch 4KUHD Smart TV  
VIP cabin: 32 inch 4KUHD Smart TV  
Owner cabin: 32 inch 4KUHD Smart TV  
4x Bluray player 4K ultra HD wi-fi  
6x Marin entertainment system, FUSION  
Marine speakers JL AUDIO X2 for each zone

**NOTE ON TRADE-IN**

The Seller is willing to consider trade-ins on a selective basis. Please do not hesitate to reach out.





Generated On 5/9/2025 3:28 AM by WORLD YACHT GROUP SVC Account

**WORLD YACHT GROUP USA**

**WORLD YACHT GROUP SVC**

**ALECTO**

**Account**

**info160920210306@world-yacht-  
group.com**

**worldyachtgroup.com**

Page 7 of 13





Generated On 5/9/2025 3:28 AM by WORLD YACHT GROUP SVC Account

**WORLD YACHT GROUP USA**

**WORLD YACHT GROUP SVC**

**ALECTO**

**Account**  
**info160920210306@world-yacht-**  
**group.com**  
**worldyachtgroup.com**

Page 8 of 13





Generated On 5/9/2025 3:28 AM by WORLD YACHT GROUP SVC Account

**WORLD YACHT GROUP USA**

**WORLD YACHT GROUP SVC**

**ALECTO**

**Account**

**info160920210306@world-yacht-  
group.com**

**worldyachtgroup.com**

Page 9 of 13





Generated On 5/9/2025 3:28 AM by WORLD YACHT GROUP SVC Account

**WORLD YACHT GROUP USA**

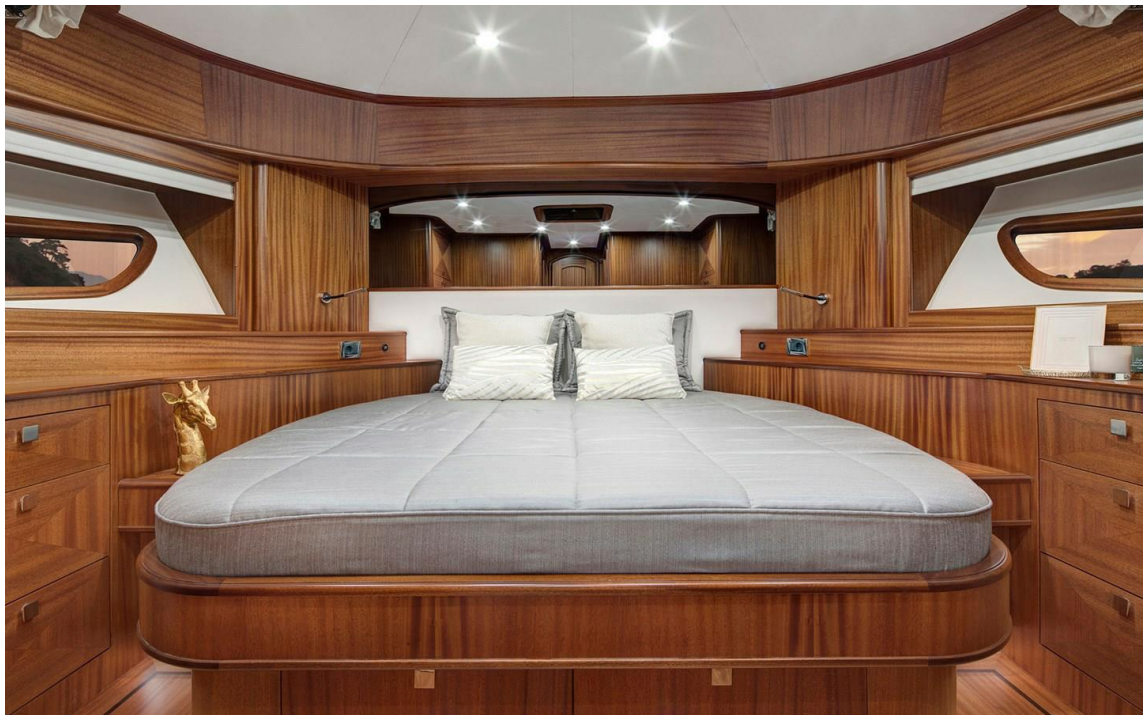
**WORLD YACHT GROUP SVC**

**ALECTO**

**Account**  
**info160920210306@world-yacht-**  
**group.com**  
**worldyachtgroup.com**

Page 10 of 13





Generated On 5/9/2025 3:28 AM by WORLD YACHT GROUP SVC Account

**WORLD YACHT GROUP USA**

**WORLD YACHT GROUP SVC**

**ALECTO**

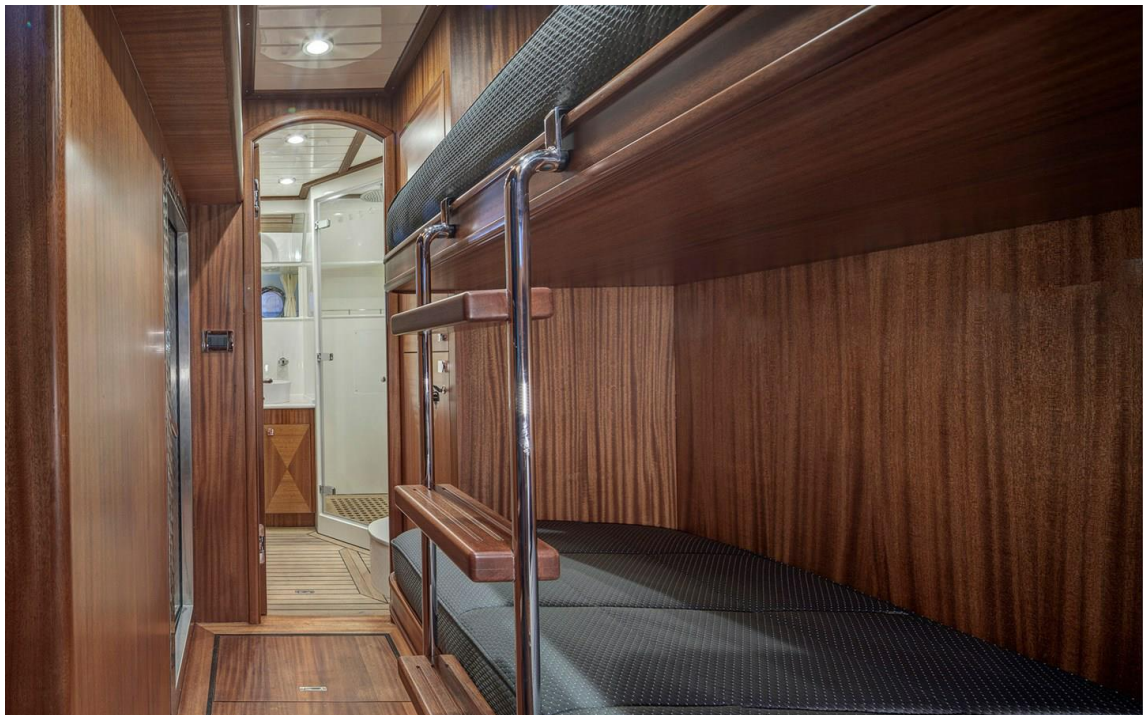
**Account**

**info160920210306@world-yacht-  
group.com**

**worldyachtgroup.com**

Page 11 of 13









Generated On 5/9/2025 3:28 AM by WORLD YACHT GROUP SVC Account

**WORLD YACHT GROUP USA**

**WORLD YACHT GROUP SVC**

**ALECTO**

**Account**  
**info160920210306@world-yacht-**  
**group.com**  
**worldyachtgroup.com**

Page 13 of 13