



world yacht group

Experts in luxury yachts

ELEMENTS



LOA:	262' 6" (80m)	Delivery/Model	2019
Beam:	42' 8" (13m)	Year:	
Max Draft:	15' 2" (4.6m)	Builder:	YACHTLEY
Tonnage:	2,443.00	Type:	Motor Yacht
Speed:	13 Knots 20 Knots	Staterooms:	12
Flag:	Malta	Fuel Cap:	86384 Gal
Location:	Corfu, Ionian Islands Region Greece	Water Cap:	18756 Gal
VAT Paid:	No Duty Paid	Engines:	1x, MTU, 16 V 4000 M63L, 3000 HP
		Price:	(\$126,005,513 USD est.) €112,000,000 EUR

Generated On 5/11/2025 7:46 AM by WORLD YACHT GROUP SVC Account

WORLD YACHT GROUP USA

WORLD YACHT GROUP SVC

ELEMENTS

Account

**info160920210306@world-yacht-
group.com
worldyachtgroup.com**

Page 1 of 15

Additional Specifications For ELEMENTS:

LOA:	262' 6" (80m)	Delivery/Model	2019
Beam:	42' 8" (13m)	Year:	
Min Draft:	12' 6" (3.8m)	Year Built:	2019
Max Draft:	15' 2" (4.6m)	Builder:	YACHTLEY
Hull Material:	Steel	Type:	Motor Yacht
Superstructure:	Aluminum	Engines:	3000 HP, Single, Diesel, MTU, 16 V 4000 M63L, 342hrs
Tonnage:	2,443.00	Staterooms:	12
Range At Cruise	8000	Sleeps:	24
Speed:		Crew Quarters:	15
Range At Max		Crew Berths:	30
Speed:		Captain Cabin:	Yes
Speed:	Cruising 13 Knots	Classifications:	SOLAS LR, PYC
	Max 20 Knots	MCA:	ISM:
Int Designer:	Cristiano Gatto Design		
Ext Designer:	Alpha Marine Ltd		
Fuel Capacity:	86384 Gal		
Water Capacity:	18756 Gal		
Flag:	Malta		
Location:	Corfu, Ionian Islands Region Greece		
Price:	(\$126,005,513 USD est.) €112,000,000 EUR		
Tax Status:	No Duty Paid		

Description

She is one of the world's few purpose built SOLAS yachts. Able to accommodate 24 guests while on charter she combines timeless lines with a mature layout and a striking interior. Dedicated guest areas are cleverly located over 4 decks, including shaded exterior deck spaces, a variety of crew access and flow is well planned throughout the yacht allowing for seamless service.

It is quite remarkable what this 80m, 2950 GT yacht has to offer.

BRIDGE DECK

The sky lounge is illuminated by large windows and opens up to a shaded exterior deck space aft. Two L shaped sofas, each with its own coffee table and Ottomans, face aft with two bars well situated for service. A third bar and dumb waiter are in the sky lounge itself. The sky lounge and aft exterior deck space are well suited for large groups or as private alcoves for more intimate gatherings of smaller groups. Accessible via the central internal staircase and elevator the forward part of the Bridge deck comprises of the Bridge itself, captain's cabin, ship's office, store, powder room and technical spaces.

MASTER DECK

Entering the MASTER SUITE the oval lobby doubles into a walk-in closet with more space around to the port side and master bathroom on the starboard side. The MASTER STATEROOM itself is immediately forward offering 180-degree views and opening up onto a private deck including the swimming pool and helipad. Within the MASTER STATEROOM there is an oval bathtub and jacuzzi on the port side illuminated by a skylight as well as a small private dining table on the starboard side. The bed is in the center facing forward with a desk and bar on either side.

Immediately aft of the MASTER SUITE are two VIP cabins each with large en-suite bathrooms ample closet space and abundant natural light due to the large windows. The Butler's cabin and powder room are on the starboard side further aft. To the aft of the central stairwell and elevator are a dedicated cinema, private card room and the main dining room. The dining room can comfortably accommodate 24 guests on two large oval tables and opens towards on to a shaded deck space aft with two smaller round tables ideal for breakfast or al fresco dining.

MAIN DECK

Stepping on board from the dock the large aft deck is shaded, like most of the exterior deck spaces on board. Two round tables on the aft are enclosed by two comfortable semi-circular sofas. Stepping into the main salon there are two large seating areas either side almost mirroring one another with large comfortable sofas and arm chairs. On the starboard side forward, a large bar overlooks the space. Moving forward and passed the central staircase and elevator is the grand corridor leading off to nine en-suite guest cabins. The cabins enjoy breath-taking views out of their large windows and are naturally illuminated through the same windows. These are well appointed en-suite state rooms, five with twin beds and four with doubles.

BEACH CLUB

The guest areas are completed with the Beach Club on the aft of the LOWER DECK. With two large swim platforms opening up onto sea level out of the aft and port side of the yacht, offering easy access to the sea or platforms for receiving guests by tender. The Beach club itself offers a massage room, Turkish bath, bar and powder room.

Crew & Staff:

5 x Single

8 x Two-Bedded

2 x Four-Bedded

1 x Butler's

1 x Hospital

Crew – Officers' Mess Room: 62 m2

MAIN



AERIAL



Generated On 5/11/2025 7:46 AM by WORLD YACHT GROUP SVC Account

WORLD YACHT GROUP USA

WORLD YACHT GROUP SVC

ELEMENTS

Account

**info160920210306@world-yacht-
group.com**

worldyachtgroup.com

Page 4 of 15

OWNER SUITE



OWNER SUITE



Generated On 5/11/2025 7:46 AM by WORLD YACHT GROUP SVC Account

WORLD YACHT GROUP USA

WORLD YACHT GROUP SVC

ELEMENTS

Account

**info160920210306@world-yacht-
group.com**

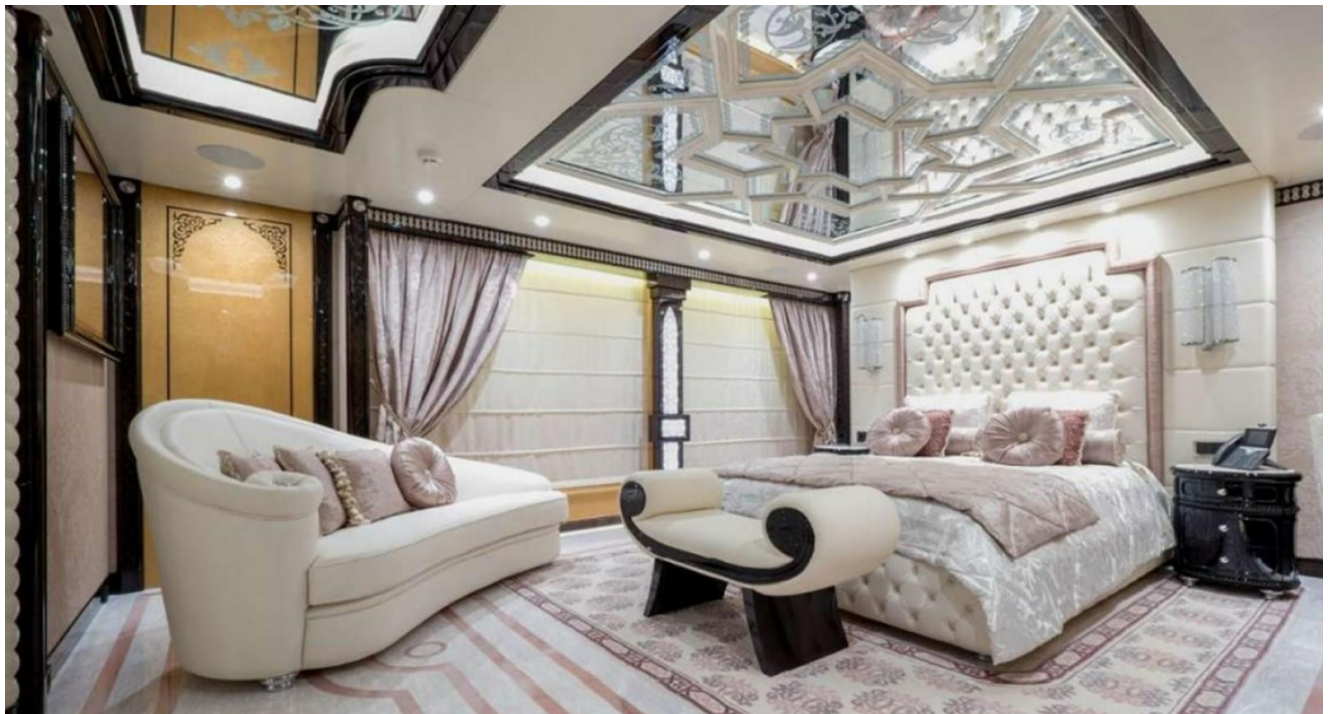
worldyachtgroup.com

Page 5 of 15

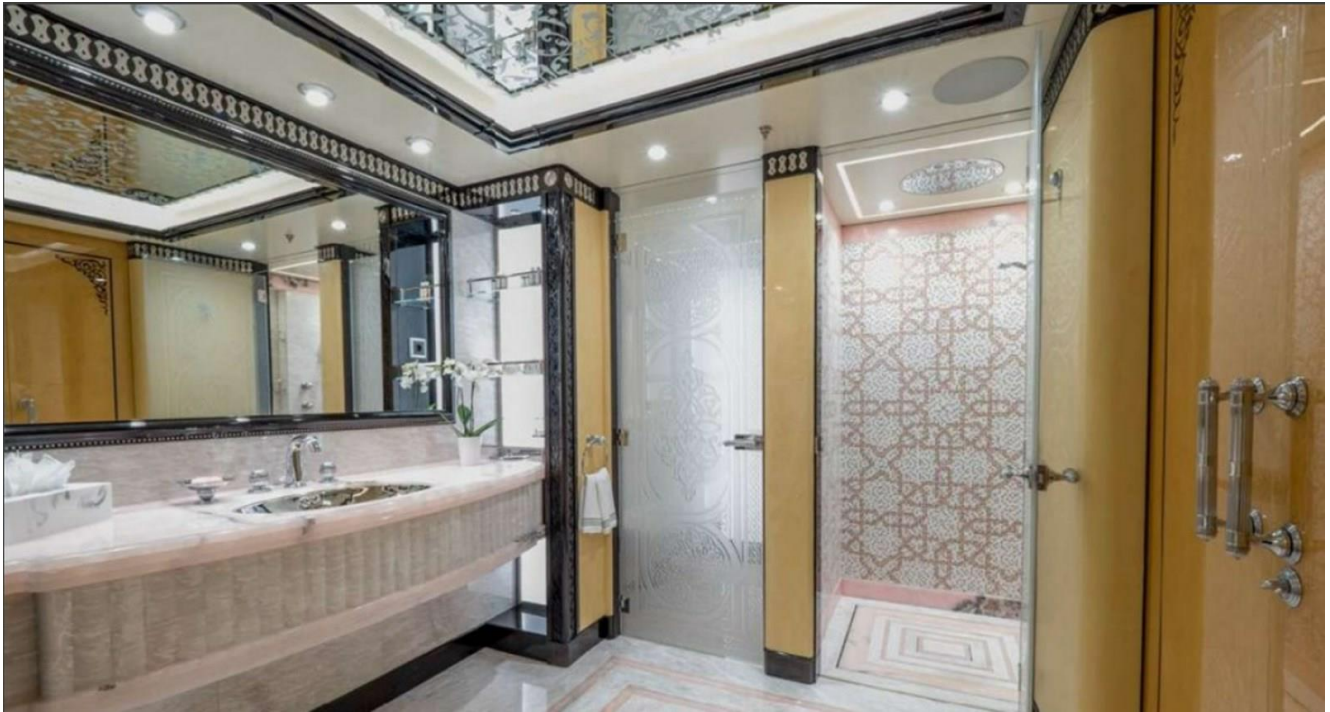
TWIN



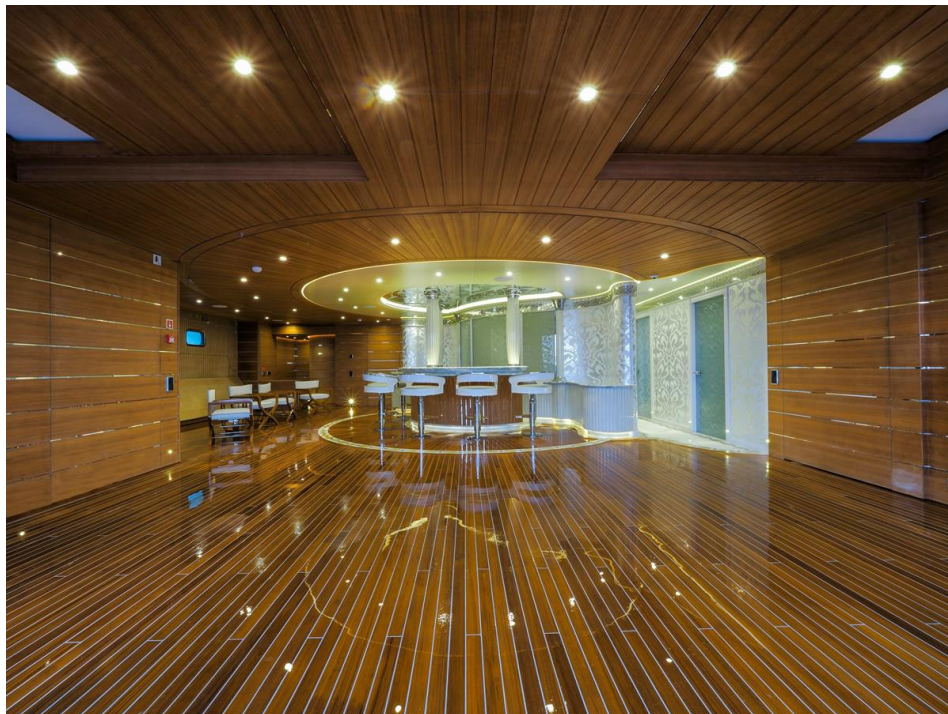
VIP



VIP BATHROOM



BEACH CLUB



Generated On 5/11/2025 7:46 AM by WORLD YACHT GROUP SVC Account

WORLD YACHT GROUP USA

WORLD YACHT GROUP SVC

ELEMENTS

Account

**info160920210306@world-yacht-
group.com**

worldyachtgroup.com

Page 7 of 15

MAIN SALOON



DINING ROOM



Generated On 5/11/2025 7:46 AM by WORLD YACHT GROUP SVC Account

WORLD YACHT GROUP USA

WORLD YACHT GROUP SVC

ELEMENTS

Account

**info160920210306@world-yacht-
group.com**

worldyachtgroup.com

Page 8 of 15

HAMMAM



BEACH CLUB MASSAGE ROOM



Generated On 5/11/2025 7:46 AM by WORLD YACHT GROUP SVC Account

WORLD YACHT GROUP USA

WORLD YACHT GROUP SVC

ELEMENTS

Account

**info160920210306@world-yacht-
group.com**

worldyachtgroup.com

Page 9 of 15

MAIN SALON BAR



MAIN SALOON



Generated On 5/11/2025 7:46 AM by WORLD YACHT GROUP SVC Account

WORLD YACHT GROUP USA

WORLD YACHT GROUP SVC

ELEMENTS

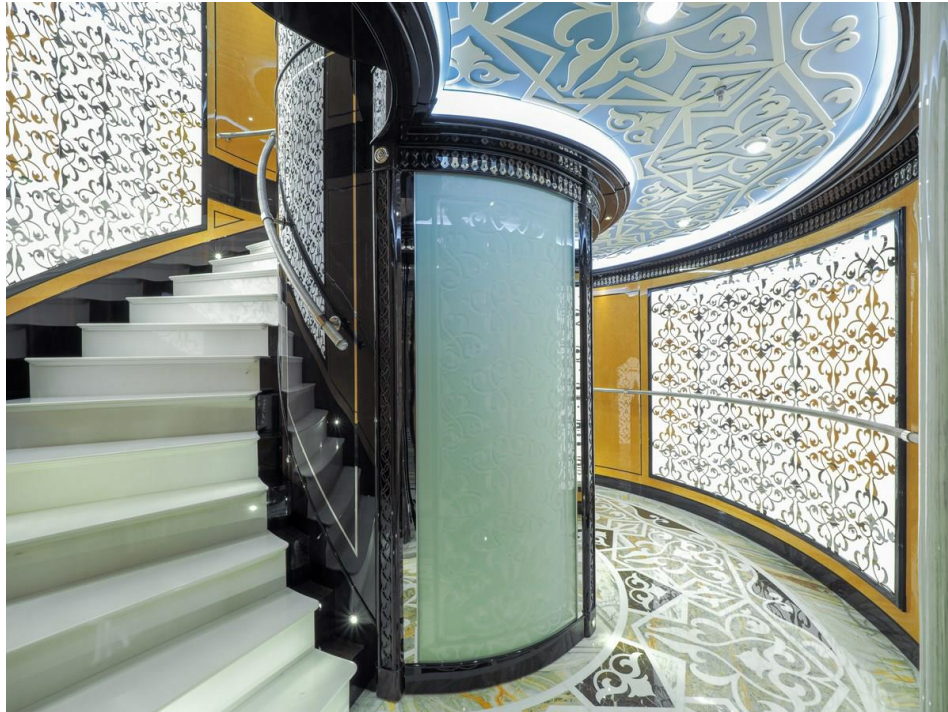
Account

**info160920210306@world-yacht-
group.com**

worldyachtgroup.com

Page 10 of 15

STAIR CASE



DECK1



Generated On 5/11/2025 7:46 AM by WORLD YACHT GROUP SVC Account

WORLD YACHT GROUP USA

WORLD YACHT GROUP SVC

ELEMENTS

Account

**info160920210306@world-yacht-
group.com**

worldyachtgroup.com

Page 11 of 15

DECK2



SWIMMING PLATFORM



Generated On 5/11/2025 7:46 AM by WORLD YACHT GROUP SVC Account

WORLD YACHT GROUP USA

WORLD YACHT GROUP SVC

ELEMENTS

Account

**info160920210306@world-yacht-
group.com**

worldyachtgroup.com

Page 12 of 15

PLATFORM



HELICOPTER PAD



Generated On 5/11/2025 7:46 AM by WORLD YACHT GROUP SVC Account

WORLD YACHT GROUP USA

WORLD YACHT GROUP SVC

ELEMENTS

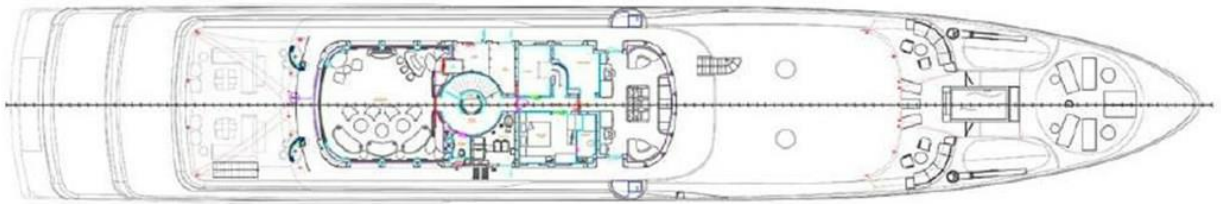
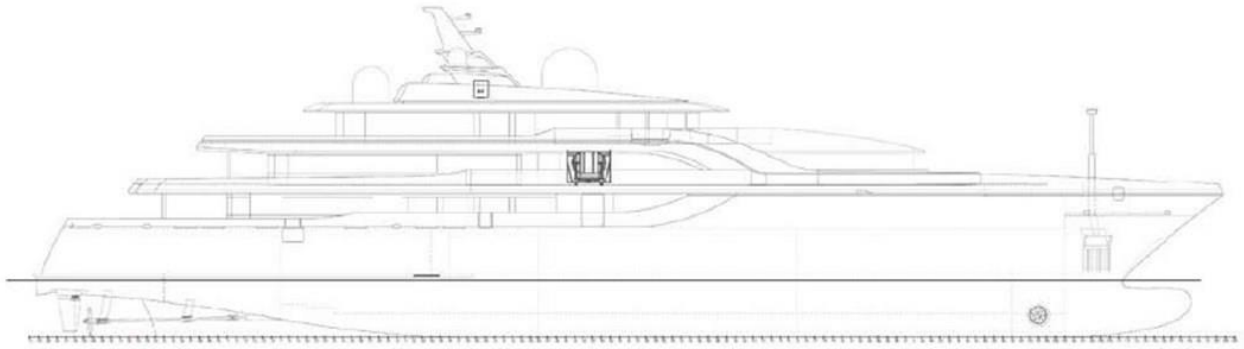
Account

**info160920210306@world-yacht-
group.com**

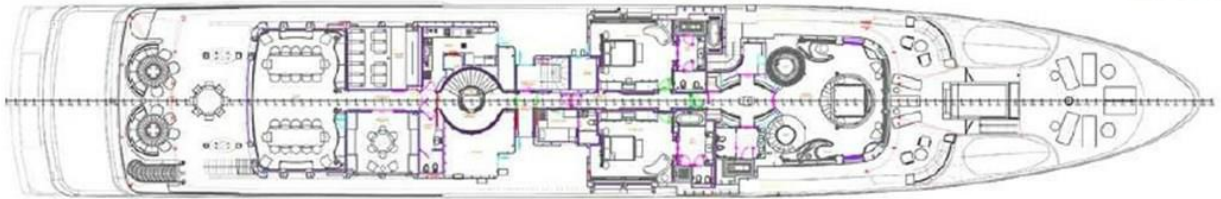
worldyachtgroup.com

Page 13 of 15

Layout1



EPHRAIM LACIA (12000/1117-286)



OWNERS DECK (10200 mm x 48)

Generated On 5/11/2025 7:46 AM by WORLD YACHT GROUP SVC Account

WORLD YACHT GROUP USA

WORLD YACHT GROUP SVC

ELEMENTS

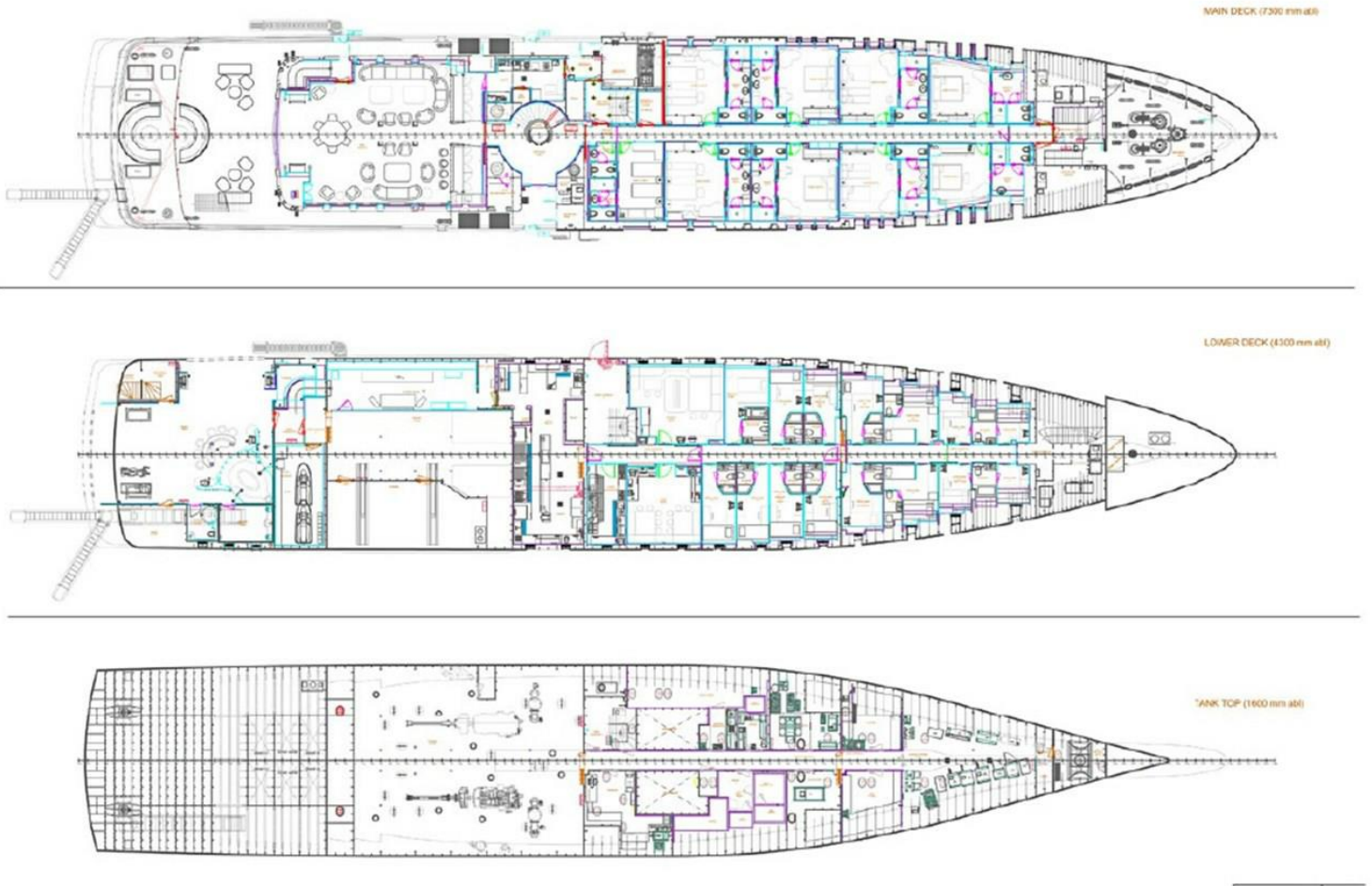
Account

**info160920210306@world-yacht-
group.com**

worldyachtgroup.com

Page 14 of 15

Layout2



Generated On 5/11/2025 7:46 AM by WORLD YACHT GROUP SVC Account

WORLD YACHT GROUP USA

WORLD YACHT GROUP SVC

ELEMENTS

Account

**info160920210306@world-yacht-
group.com**

worldyachtgroup.com

Page 15 of 15