



<b>Type</b>	<b>Motor Yacht</b>	<b>Classification</b>	--
<b>Top</b>	--	<b>Class Type</b>	--
<b>Model</b>	<b>Horizon V68-612</b>	<b>Builder</b>	<b>HORIZON YACHTS</b>
<b>Manuf. Year</b>	<b>2025</b>	<b>Naval Architect</b>	<b>Jonathan Quinn Barnett</b>
<b>Refit Year</b>	--	<b>Interior Design</b>	--
<b>LOA</b>	<b>73' 5" (22.38m)</b>	<b>Hull</b>	<b>Fiberglass</b>
<b>Beam</b>	<b>19' 6" (5.94m)</b>	<b>Deck</b>	<b>Fiberglass</b>
<b>Draft Min/Max</b>	<b>5' 2" (1.58m) / 5' 9" (1.75m)</b>	<b>Engines</b>	<b>2x, CAT, C-18, 1150 HP</b>
<b>GRT</b>	--	<b>Max Speed</b>	--
<b>Fuel</b>	<b>1200 Gal</b>	<b>Cruise Speed</b>	--
<b>Water</b>	<b>300 Gal</b>	<b>Range</b>	--
<b>Flag</b>	<b>US</b>	<b>Accommodations</b>	<b>6 in 3 strms 2 crew</b>

**ASKING PRICE: Price on Application**

**Horizon V68-Hull 12 running across the sound.**



**Horizon V68-Hull 12 cruising the Pacific North West.**



**Horizon V68-Hull 12 sitting in front of downtown Seattle.**



**Horizon V68-Hull 12 large bow seating area and sunpad.**



**Horizon V68-Hull 12 boat deck with bar.**



**Horizon V68-Hull 12 boat deck with bar and grill.**



**Horizon V68-612 aft deck with seating and teak table.**



**Horizon V68-Hull 12 aft deck seating.**



**Horizon V68-Hull 12 aft deck seating with TV.**



**Horizon V68-612 skylounge with helm chairs.**



**Horizon V68-612 skylounge with u-shaped seating and TV.**



**Horizon V68-612 salon with leather sofa and decor pillows.**



**Horizon V68-Hull 12 open salon leading out to aft deck.**



**Horizon V68-Hull 12 salon aft bar.**



**Horizon V68-612 galley with center island and panel-ready fridge.**



**Horizon V68-612 country kitchen with table.**



**Horizon V68-Hull 12 lower foyer and staircase.**



**Horizon V68-612 master bedroom with bed and headboard.**



**Horizon V68-612 master bath with smart mirrors and shower.**



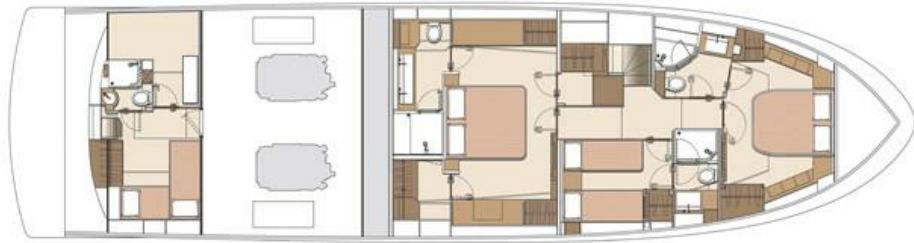
**Horizon V68-612 large forward VIP.**



**Horizon V68-Hull 12 engine room.**



# Horizon V68-612 Color GA





## FORWARD & AFT DECKS

FRP side and foredecks

Heavy-duty S/S handrail w/ 1 ¼" stanchions

FRP cap rail

Sunpad on fwd. deck w/drink holders, storage lockers, and pop-up LED lighting

Forward seating w/ Corian table

Custom design bow sunshade over seating with two S/S fittings & poles

Fwd deck (x2) JL Audio speakers w/ amp

(1) Maxwell VWC3500C vertical hydraulic anchor winch

(1) Acco 300' anchor chain

(1) 70kg S/S anchor

Fresh water & sea water anchor chain washdown (manual)

S/S portholes w/ screens

Frameless windows, tinted Low-E tempered glass

Wired remote control with outlet on aft deck to control engines and thrusters

Side boarding gates port & stbd

Teak aft deck, swim platform & stair steps

Dinette aft seating w/sliding teak high gloss table

Extended 18" FB deck with manual roll-down screen

S/S manual foldable sliding door for the main salon

Manual fold-down 43" TV w/ hydraulic damper

Aft deck JL Audio speakers and marine system

Comfortable stairs with S/S handrails from aft deck to boat deck

Watertight door to crew quarters & ER

Built-in hot/cold water shower at swim platform

Hydraulic Hi/Lo teak swim platform, 1500lb load capacity

(8) Heavy-duty S/S cleats, including (2) on corners of swim step & fairlead w/ rollers

(4) Blue underwater lights on transom under swim platform

LED boat name on stern

Manual S/S swim ladder

## SKYLOUNGE & BOATDECK

Integrated instrument panel w/ full set of engine gauges, compass & C-Zone System for monitoring system for important equipment (fuel & water gauges, generators, navigation lights, bilge, sump pumps, ER blowers, etc)

(2) STIDD helm chairs

Day head in Skylounge

U-shaped sofa w/custom-made convertible hi/lo satin table

Manual fold-down 43" TV from ceiling w/ hydraulic damper

Half-height cabinets under TV w/ fridge & icemaker

One hatch on top of Skylounge

60" S/S manual sliding glass panel windows

S/S sliding door to boat deck

FRP boat deck

Custom design U-shape bar on boat deck w/ 2 barstools, sink & 24" BBQ

Large opening S/L window to bar

GE 7.0 cu chest freezer w/ FRP cabinet

Steelhead ES1500 (1500lb) davit

S/S removable rails around FB boat deck

FRP radar arch

Up lights for mast

Custom design grey paint dome

## ENGINE & PROPULSION DETAILS

Twin CAT C-18A 1150 HP engines

(x2) Onan generator 29kW

3kW inverter

S/S Aqua Tech #22 HS shafts

High performance 4 blade propellers

Main & intermediate bronze struts w/ backing plates

Emergency steering device

S/S rudder w/ zinc plates

Zipwake trim tabs w/ indicators

Hypro electronic command steering system w/ backup pump

TIDES rudder & shaft seals

Humphree stabilizer w/ two 100A chargers & eight units of 400A/6V service batteries

Side Power SH320/300 23.3hp bow & stern thrusters

Shore power system one 100amp 75' cable master w/ one 50Amp receptacle at stern

15KVA & 25KVA transformers for shore power system

Exhaust system for engines w/ mufflers

FRP water/exhaust separator for generator

S/S covers for engine exhaust pipes

TRIDENT hose for engine exhaust

Sound & heat insulated material in bulkheads & ceiling

S/S overhead grab rail on each side of engine

Engine compartment AC & DC blowers

LED backlights for fuel sight gauge & fuel filters

Air compressor

## MECHANICAL SYSTEMS

1,200-gallon aluminum fuel tanks w/ sight gauges & self-closing control valve

Dual Racor 75/1000 MA fuel filters/water separator, each engine

Racor 500MA fuel filter on generator

Oil change pump system for engines, gears & generator  
Marine Air chilled water air conditioning for salon and each cabin  
S/S water tanks  
High-volume AC freshwater pressure pump & one DC pump for backup  
Dometic SeaXchange & Spot Zero XZII 1800/2000Z water maker + water purifier  
Freshwater charcoal filter in main supply pipe  
Marine grade lines & color-coded piping for freshwater system  
(1) Hot water heater 30 gallon  
Hot water circulation pump  
Freshwater hose for filling engine and generator expansion tank  
Freshwater & seawater washdown faucet in aft. deck and F/B  
120-gallon holding tank w/ macerator pump  
Sump pump systems for drains overboard  
Y-valve for holding tank for dockside pump-out  
Electric Rule bilge pumps  
(1) Manual bilge pumps in engine room  
Bilge exhaust ventilation fan  
Sea-Fire automatic/manual fire extinguisher for ER w/ panel in helm station  
Automatic fire damper system

## ELECTRICAL SYSTEMS

LED lighting system throughout interior & exterior  
Termodinamica air conditioning system plus EX707 panel  
Dimmer switch for salon & S/L  
100 amp shore power system, plus 50 amp  
40 AMP transformers  
80A VICTRON SKYLLA-I battery charger for engine & generator start-up batteries  
80A VICTRON SKYLLA-I battery charger w/ control panel for service batteries  
(4) 210A AGM batteries for engine & generator start-up  
(4) 210A AGM batteries for ship's service power  
24-volt DC monitoring  
GFI protection for all AC outlets in exterior, heads, galley & engine room  
Main electric panel includes AC & DC circuit breakers.  
Italian VIMAR switches for lighting switches & receptacles.  
Electrolysis bonding system  
(2) Stern docking lights  
KVH HD7 SAT and (5) receivers, no dummy dome  
Cellular router system w/5G Wi-Fi on board

## INTERIOR DÉCOR & EQUIPMENT

Guest accommodations include full-beam master stateroom, fwd VIP cabin, & guest cabin, all ensuite  
Crew bunk w/ head and shower

Custom luxury interior package for soft goods, décor & lighting

Full glasses set for (8) (Wine, Champagne, Martini, Double Rock and Burgundy)

Main wood: walnut in satin finish w/ Mosia wood flooring

Fabrica carpet for all staterooms

Cambria quartz countertops & flooring in galley & all stateroom heads

Stacked Electrolux washer/dryer in foyer hallway

High-quality push buttons for cabinet doors

## SALON

Wood flooring

L-shaped sofa w/ coffee table, designer rug to stbd

(2) loose chairs w/end table to port

Custom wet bar w/ sink, icemaker, glassware storage & bar top to serve aft deck

Upgraded electric blinds for port and stbd windows

50" Frame TV

Sonos entertainment system

Apple TV

Direct TV

## GALLEY/DINETTE

Cambria quartz floor in galley

Wood floor for outside galley & dinette

Panel-ready Miele refrigerator & icemaker

Jenn-Air cooktop

Jenn-Air oven

GE trash compactor

Summit wine cooler

GE garbage disposal

Panel-ready Bosch dishwasher

"U" shape kitchen dinette

Galley island, S/S sink & faucet

## MASTER STATEROOM

King size bed w/ hotel inspired mattress & headboard

His & her walk-in carpeted closets

Vanity w/ chair to stbd

Large ensuite head w/ dual sink, rain shower & toilet

Extra full height storage

43" Samsung TV

Sonos beam

Direct TV

## VIP STATEROOM

Queen size bed w/upgraded hotel-inspired mattress & headboard  
Dual hanging lockers  
En suite head w/ upgraded granite sink, rain shower & toilet  
42" Samsung TV  
Sonos beam  
Direct TV

## GUEST STATEROOM

(2) Single berths w/ optional sliding function  
Foam mattresses w/ headboard  
Hanging locker  
En suite head w/ upgraded granite sink, shower walls & toilet  
24" Samsung TV  
Sonos beam  
Direct TV

## CREW QUARTERS

Customized design crew cabin with two single berths  
GE Microwave and Vitrefrigo fridge in crew galley  
Electric toilet, sink, and shower  
2 USB Reading lights in crew cabin  
Entrance from transom watertight door & emergency aft deck seat with ladder  
Hanging locker  
(1) A/C unit

## NAVIGATION

Garmin GPSMAP 9222 navigational system w/ (3) 22" screens at helm  
Garmin open array GMR 1234 xHD3 radar  
Garmin Autopilot  
Garmin AIS 800 and GPS  
Garmin VHF (2) & card reader  
Garmin black box sounder  
Garmin GMI 20 digital multi-display  
Garmin marine camera (1) in engine room & (1) aft deck  
C-Zone Monitoring System