



world yacht group

Experts in luxury yachts

M 125



LOA:	125' 4" (38.2m)	Delivery/Model Year:	2023
Beam:	35' (10.67m)	Builder:	MAORI
Max Draft:	7' 9" (2.36m)	Type:	Motor Yacht Tri-Deck
Tonnage:	367.00	Staterooms:	5
Speed:	15 Knots 18 Knots	Fuel Cap:	10000 Gal
Flag:	Italian	Water Cap:	1320 Gal
Location:	Olbia, Sardinia Italy	Engines:	2x, MAN, V-12, 1800 HP
VAT Paid:	No Duty Paid	Price:	(\$19,413,168 USD est.) €17,500,000 EUR

Generated On 5/13/2025 1:19 AM by WORLD YACHT GROUP SVC Account

WORLD YACHT GROUP USA

WORLD YACHT GROUP SVC

M 125

Account

**info160920210306@world-yacht-
group.com**

worldyachtgroup.com

Page 1 of 18

Additional Specifications For M 125:

LOA:	125' 4" (38.2m)	Delivery/Model	2023
Beam:	35' (10.67m)	Year:	
Max Draft:	7' 9" (2.36m)	Year Built:	2022
Hull Material:	GRP	Builder:	MAORI
Superstructure:	GRP	Type:	Motor Yacht Tri-Deck
Tonnage:	367.00	Engines:	1800 HP,Twin, Diesel, MAN, V-12, 60hrs / 60hrs
Range At Cruise	3800	Staterooms:	5
Speed:		Sleeps:	10
Range At Max		Heads:	6
Speed:	Cruising 15 Knots	Crew Quarters:	4
	Max 18 Knots	Crew Berths:	7
Fuel Capacity:	10000 Gal	Captain Cabin:	Yes
Water Capacity:	1320 Gal	Classifications:	RINA Commercial Comfort Class
Holding Tank:	660 Gal	MCA:	ISM:
Flag:	Italian		
Location:	Olbia, Sardinia Italy		
Price:	(\$19,413,168 USD est.) €17,500,000 EUR		
Tax Status:	No Duty Paid		

DETAILED DESCRIPTION

REMARKS

M125 is one of the most unique and impressive looking yachts in the world. This dramatic and aggressive styled 2023 Maori was launched in the spring of 2022. Her remarkable exterior lines are compliments of the progressive design studio of Marco Ciampa with NavalHEAD International providing the architecture and engineering. This long-range explorer was constructed using a vacuum bagged GRP/carbon fiber infusion process to minimize weight and maximize strength. Her V-channeled plumb bow and knife-edge bulb add to her dramatic appearance, while also helping to provide smooth handling in a seaway. The upscale contemporary interior was created by Pulina Exclusive Designs and gives a soft contrast to her angular exterior lines.

M125 is built to RINA Commercial Comfort class specifications. This means that the insulation of walls, floors and overheads, as well as anti-vibration engineering were employed during construction at all junctions where sound and vibration could be transferred. This process is both time-consuming and expensive, but adds significantly to the yacht's overall comfort and value.

She has a huge beach club which takes full advantage of her enormous 35' beam. The transformer swim platform and twin hydraulic garages open upward exposing storage compartments large enough to fit two 18' tenders. The upper deck master stateroom has a spectacular view overlooking the aft deck and ocean beyond. There are accommodations for eight additional guests in four large suites on the lower deck, plus she carries seven crew in four cabins.

This yacht cruises at 15 knots and has a top speed of 18, with a range of 3,800 nautical miles at 10.5 knots. She has CMC LR-90 zero speed stabilizers that provide maximum comfort while cruising and at anchor. Her first owner will have the peace of mind that comes with a complete 2-year factory warranty. Priced far below the competition, M125 represents the best value in the world in this category.

SPECIFICATIONS

Builder	Maori
LOA	125' 3" / 38.20 m
Beam	34' 9" / 10.60 m
Draft	7' 8" / 2.35 m
Build Year	2022
Model Year	2023
Engines	2 X Man V12 – 1,800hp
Cruise Speed	15 knots
Max Speed	18 knots
Range	3,800 nm @ 10.5 knots / 28 GPH
Gross Tonnage	367
Displacement	230 Tons / 507,063 Lbs.
Classification	Rina Comfort Class
Construction	Vacuum Bagged GRP & Carbon Fiber
Paint	Gelcoat
Flag	Italian
Location	Sardinia, Italy

CAPACITIES

Generated On 5/13/2025 1:19 AM by WORLD YACHT GROUP SVC Account

WORLD YACHT GROUP USA

WORLD YACHT GROUP SVC
Account
info160920210306@world-yacht-
group.com
worldyachtgroup.com

M 125

Fuel	10,039 US Gallons / 38,000 liters
Day Tank	1,691 US Gallons / 6,400 liters
Freshwater	1,321 US Gallons / 5,000 liters
Grey / Black Water	793 US Gallons / 3,000 liters

ACCOMMODATION

Guests	10 Guests in 5 cabins (master cabin on top deck + 4 on lower deck)
Crew	7 Crew in 4 cabins (captain's cabin + 3 twin cabins)

MECHANICAL EQUIPMENT

Engines	2 X 1,800hp Man V12
Generators	70 Kw Kohler 50hz @ 1,500 Rpm + 55 Kw Kohler 50hz @ 1,500 Rpm
Thrusters	Sidepower (bow & stern)
Zero-speed stabilizers	CMC LR-90
Electrical	88 Kw transformer + 400v 3-phase 50 Hz main
Air Conditioning	Condaria System 2 X 180,000 BTU with AHU Units
Watermaker	2 X Tecnicomar 92 gallons/hour
Gearbox	2 X ZF 3050 A
Propellers	2 X high skewed, 5-blade propellers
Steering & Trim Tabs	Twin Disk Trim Tabs System, MY 4000/4-24
Cable Handling	Glendinning

NAVIGATION EQUIPMENT

Magnetic Compass	Fuselli Fassio Calibrated Compass with Spare Compass
Automatic Pilot	Simrad AP80
Echo Sounder	FE800/Less MB
Radar	Furuno FAR 22228BB Hatteland Touch Display 24" Full HD
AIS	Furuno FA170/GPA017S
GPS	Furuno GP170
Chart Plotter	Furuno FMD3100
Sonar	DFF1 600w Megawide Electronic Chart
Weather Station	Airmar WX220

COMMUNICATION EQUIPMENT

Sat-TV	Intellian T80W (Dish Ø83 cm) LNB Worldwide
V-Sat	Intellian V80gG(Dish Ø83 cm) Control Unit
VHF	2 X Furuno FM8900
Intercom	Furuno LH-5000

DECK EQUIPMENT

Anchor Windlasses	2 X Italwinch 5.5 Kw
Anchors	2 X Posidonia SHHP PTW+ 219 kg
Anchor Chains	1 X 100m 1 X 120m
Mooring Capstans	2 X Italwinch 4kw fore 2 X Italwinch 4kw aft

Generated On 5/13/2025 1:19 AM by WORLD YACHT GROUP SVC Account

Boat Crane & Davits	2 X Opacmare Load 1,200 kg
Passerelle	1 X Opacmare 1102.46
Hydraulic Garage Door	2 X Hydraulic Doors with 400vac Unit
Sliding Doors	2 X Opacmare on main deck 1 X Opacmare on Upper deck to access master
Underwater Lights	18 X Underwater lights RGBW

ENTERTAINMENT EQUIPMENT

A/V Sytem	70" B&O TV in main salon
	55" LG TV in Master + B&O sound
	48" LG TV in each guest cabin + B&O sound
	42" LG TV in Beach Bar + B&O sound
	42" LG TV in crew mess
	Owner's and guest areas have App for Android and Apple home automation to control lights and curtains

GALLEY & LAUNDRY EQUIPMENT

Galley	1 X AEG full height refrigerator 1 X full height freezer
	1 X Insinkerator Evolution 100 garbage macerator
	1 X Gaggenau Induction Cooking Top
	1 X Zanussi Hood
	1 X Rational self cooking center XS6 2/3 Oven
	1 X Gaggenau BM455110 microwave oven
	1 X Gaggenau dishwasher
Crew	1 X Full height refrigerator 1 X full height freezer
	1 X Dishwasher
	1 X 90cm Induction cooking top 1 X garbage macerator
	1 X Hood
	1 X oven
	1 X microwave
Beach Bar	1 X Dunavox wine cellar 1 X AEG refrigerator
	1 X AEG Freezer
	1 X Hoshizaki icemaker
	1 X Insinkerator Evolution garbage macerator
	1 X Gaggenau induction cooktop
	1 X Zanussi Hood
	1 X Gaggeaneau oven
Bar	1 X Subzero Refer/freezer/icemaker
	1 X Subzero refrigerator
	1 X Hoshikazi cylinder icemaker
	1 X Subzero refrigerator/freezer/icemaker in master
	1 X Vitrifrigo frigobar guest's lobby
	1 X Refrigerator in lower deck
Laundry	2 X Zanussi washing machines 2 X Zanussi dryers

Generated On 5/13/2025 1:19 AM by WORLD YACHT GROUP SVC Account

SECURITY & SAFETY EQUIPMENT

Safety	<p>Furuno Watch Alarm System with flash beacon & motion sensor, 3 X Remote controls in crew cabins LRIT/Inmarsat-C Furuno Felcom18 with Printer and Alarm/Distress Units Life Solas approved life jackets 1 X Searchlight installed on mast 1 X Portable daylight signaling light 1 X Inmarsat-C Felcom18 1 X Ic-305 Alarm Unit 1 X Ic-306 Distress Unit 1 X Pp-520 Printer 1 X Life Ring with automatic light/smoke device 2 X Life Rings 2 X Life Rings with Buoyant Line Solas approved life jackets Provided Parachute Flares and Smoke Signals 1 X E.P.I.R.B 2 X SART Units 2 X 10-Pax life rafts with survival kit</p>
Security	<p>1 X HD digital hybrid video recorder 6 X PTZ Technical areas cameras 1 X PTZ mast cameras 1 X Touch Display Hatteland 24" Full-HD 1 X Remote Control in crew mess and Captain's cabin on Furuno 16" display</p>
Fire Fighting	<p>Smoke and fire detection throughout Vapor detection system for garages Seawater fire-fighting system with fire hose for engine room Fire-fighting systems according to flag authority</p>

TENDERS & WATER TOYS

Below is a list of equipment the vessel can accommodate however it is not supplied *

Tenders *	<p>2 X 5.3m Tender (owner supplied) 1 X Rescue Tender (owner supplied)</p>
Water Toys *	<p>2 X Seadoo Spark Jetski (owner Supplied) 8 X Seabob (owner supplied) Diving Equipment (owner supplied) Nautibuoy 800 Stowed (owner supplied) 4 X Jetsurf (owner supplied) 2 X Flyboard (owner supplied) 2 X Kayak Hobie Odyssey or similar snorkeling equipment (owner supplied)</p>

Salon Looking Aft



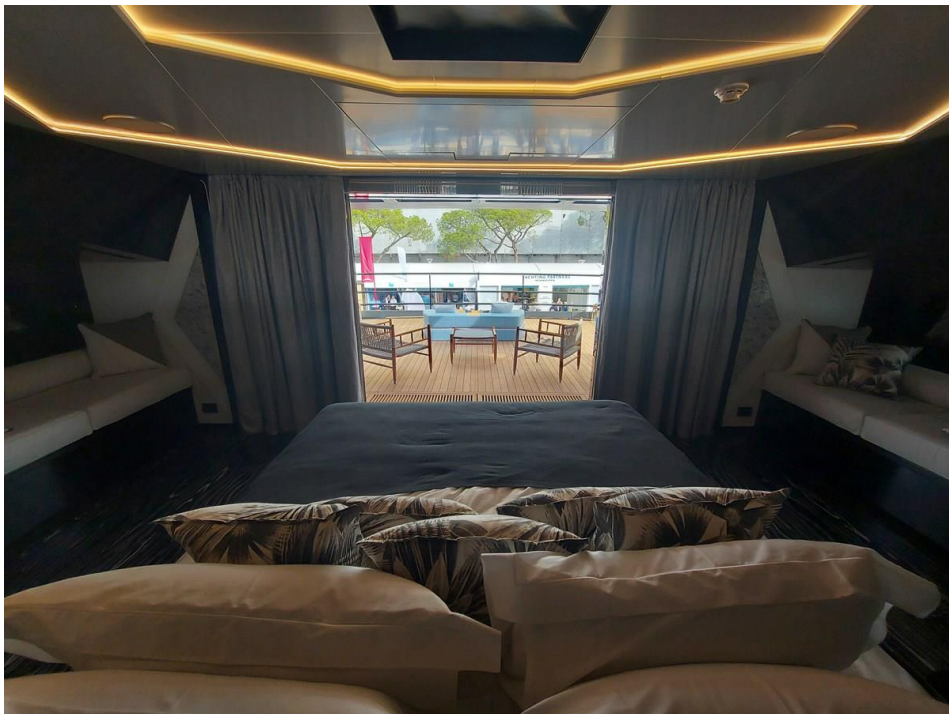
Salon Looking Forward



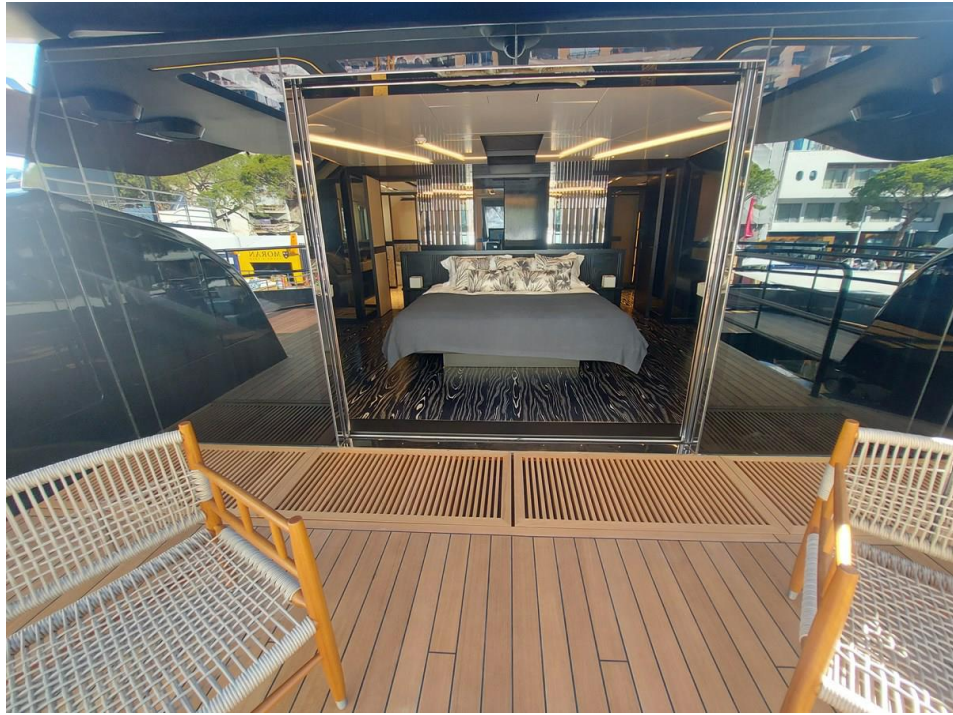
Dining Salon Looking Forward



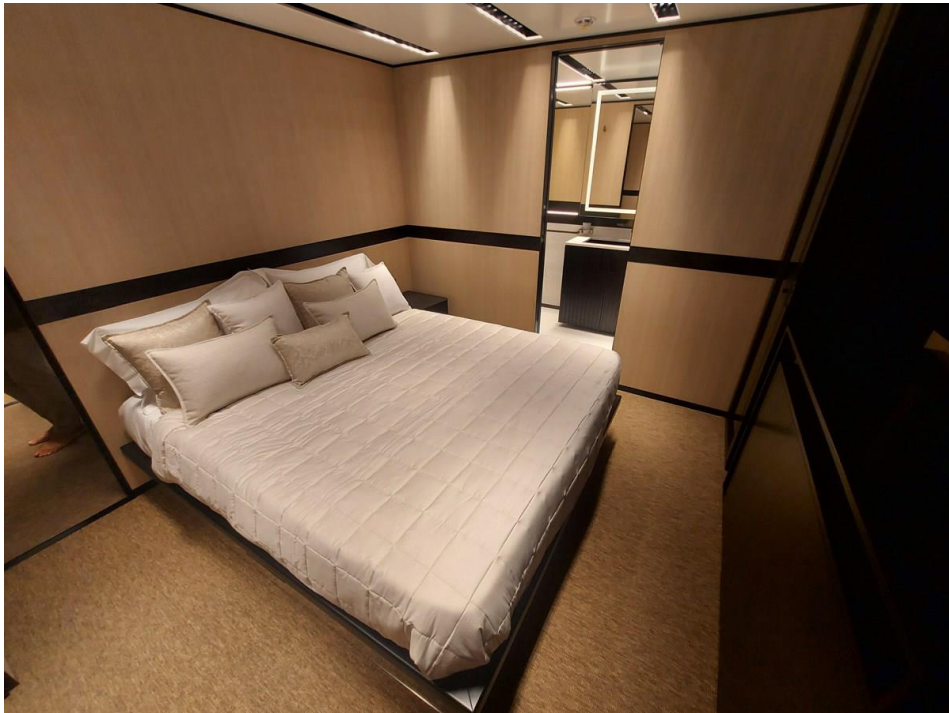
Master Looking Aft



Master From Aft Deck



Guest Cabins



Generated On 5/13/2025 1:19 AM by WORLD YACHT GROUP SVC Account

WORLD YACHT GROUP USA

WORLD YACHT GROUP SVC

M 125

Account

**info160920210306@world-yacht-
group.com**

worldyachtgroup.com

Page 11 of 18



Generated On 5/13/2025 1:19 AM by WORLD YACHT GROUP SVC Account

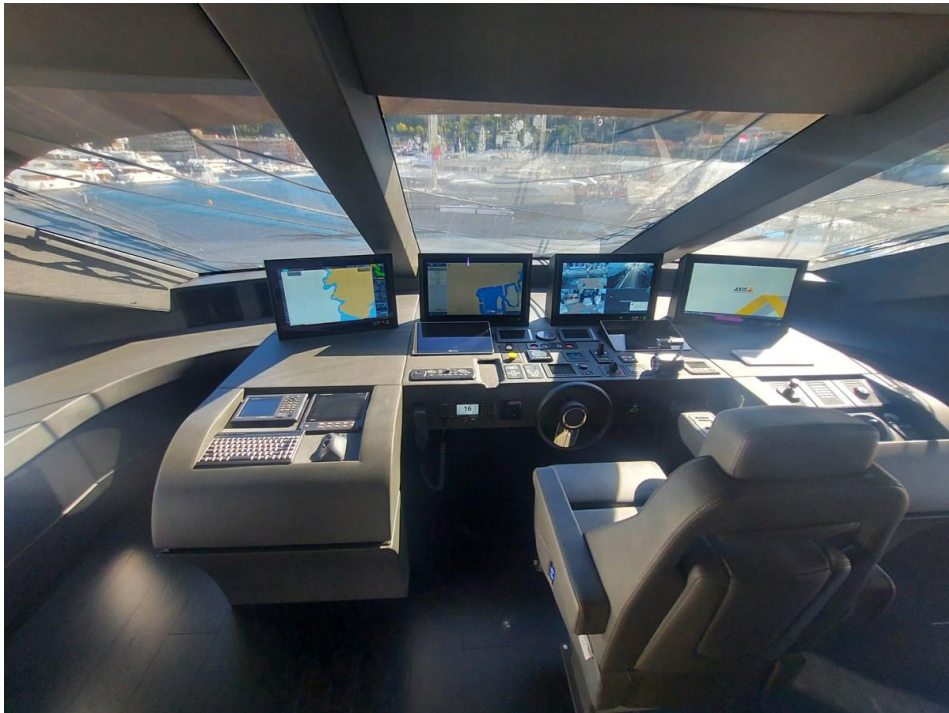
WORLD YACHT GROUP USA

WORLD YACHT GROUP SVC

M 125

Account
info160920210306@world-yacht-
group.com
worldyachtgroup.com

Pilothouse



Generated On 5/13/2025 1:19 AM by WORLD YACHT GROUP SVC Account

WORLD YACHT GROUP USA

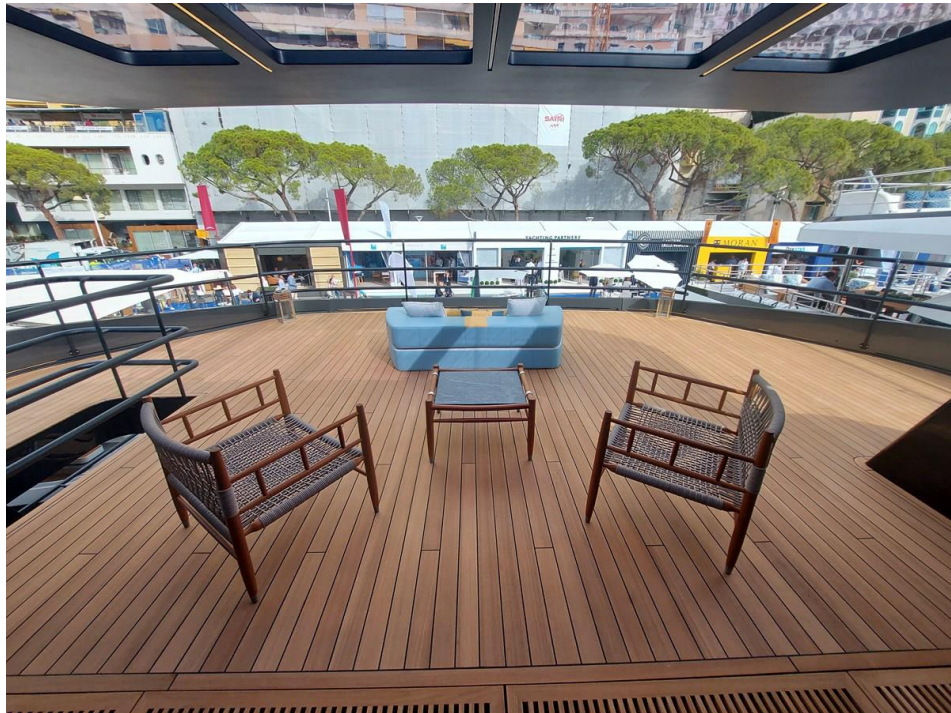
WORLD YACHT GROUP SVC

M 125

Account
info160920210306@world-yacht-
group.com
worldyachtgroup.com

Page 13 of 18

Upper Aft Deck



Generated On 5/13/2025 1:19 AM by WORLD YACHT GROUP SVC Account

WORLD YACHT GROUP USA

WORLD YACHT GROUP SVC

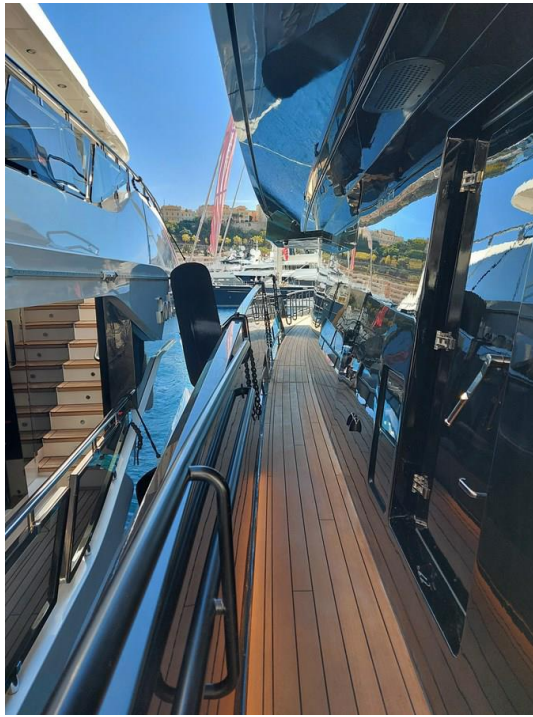
M 125

Account

**info160920210306@world-yacht-
group.com**

worldyachtgroup.com

Page 14 of 18



Foredeck



Beach Club

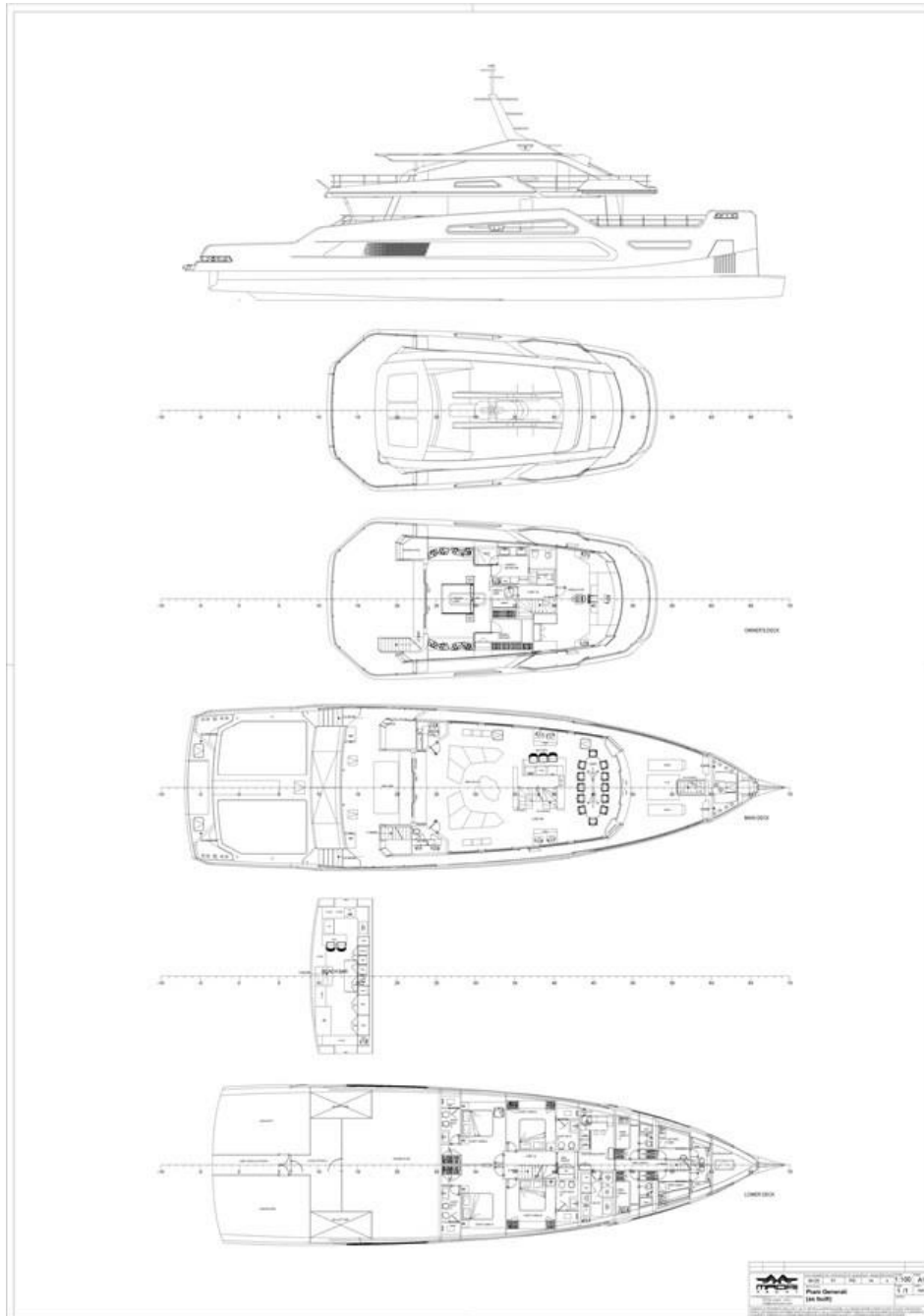




At Anchor



125 Maori - GA



Generated On 5/13/2025 1:19 AM by WORLD YACHT GROUP SVC Account

WORLD YACHT GROUP USA

WORLD YACHT GROUP SVC

M 125

Account

**info160920210306@world-yacht-
group.com**

worldyachtgroup.com

Page 18 of 18