



# Daria Tomassetti Absolem



<b>LOA:</b>	58' 4" (17.76m)	<b>Delivery/Model</b>	2020
<b>Beam:</b>	17' 6" (5.31m)	<b>Year:</b>	
<b>Max Draft:</b>	4' 4" (1.3m)	<b>Model:</b>	R6
<b>Tonnage:</b>	0.00	<b>Builder:</b>	EVO YACHTS
<b>Speed:</b>	27 Knots 35 Knots	<b>Type:</b>	Cruising Yacht
<b>Flag:</b>	French	<b>Staterooms:</b>	3
<b>Location:</b>	Cannes, Provence-Alpes- Cote-d'Azur France	<b>Fuel Cap:</b>	2100 L (554.76 Gal)
<b>VAT Paid:</b>	VAT Paid	<b>Water Cap:</b>	510 L (134.73 Gal)
		<b>Engines:</b>	2x, Volvo Penta, IPS D 11, 725 HP
		<b>Price:</b>	(\$1,768,951 USD est.) €1,500,000 EUR

Generated On 7/3/2025 8:31 PM by DARIA TOMASSETTI SVC Account

**DARIA TOMASSETTI SVC**  
**Account**  
[www.dariatomassetti.com](http://www.dariatomassetti.com)

**Absolem**

Page 1 of 9

### Additional Specifications For Absolem:

<b>LOA:</b>	58' 4" (17.76m)	<b>Delivery/Model</b>	2020
<b>Beam:</b>	17' 6" (5.31m)	<b>Year:</b>	
<b>Min Draft:</b>	4' 4" (1.3m)	<b>Year Built:</b>	2020
<b>Max Draft:</b>	4' 4" (1.3m)	<b>Builder:</b>	EVO YACHTS
<b>Hull Material:</b>	Fiberglass	<b>Model:</b>	R6
<b>Superstructure:</b>	GRP	<b>Type:</b>	Cruising Yacht
<b>Hull Config:</b>	Monohull	<b>Top:</b>	Open W/T-Top
<b>Hull Designer:</b>	Valerio Rivellini	<b>Engines:</b>	725 HP,Twin, 2020, Inboard, Diesel, Volvo Penta, IPS D 11, 600hrs / 600hrs
<b>Deck Material:</b>	Teak over Fiberglass	<b>Staterooms:</b>	3
<b>Range At Cruise</b>	280	<b>Sleeps:</b>	6
<b>Speed:</b>		<b>Heads:</b>	2
<b>Range At Max</b>		<b>Captain Cabin:</b>	No
<b>Speed:</b>	Cruising 27 Knots	<b>Classifications:</b>	
	Max 35 Knots	<b>MCA: ISM:</b>	
<b>Ext Designer:</b>	Valerio Rivellini		
<b>Fuel Capacity:</b>	2100 L (554.76 Gal)		
<b>Water Capacity:</b>	510 L (134.73 Gal)		
<b>Flag:</b>	French		
<b>Location:</b>	Cannes, Provence-Alpes-Cote- d'Azur France		
<b>Price:</b>	(\$1,768,951 USD est.) €1,500,000 EUR		
<b>Tax Status:</b>	VAT Paid		

### **Equipment and systems**

- Stern swim "transformer" platform foldable with gangway and swim ladder.
- Retractable sun awning.
- Barbecue with fridge in the cockpit.
- Dinghy Williams hydrojet garage
- Dinghy tender lift crane.
- 5 Tv wit sat TV
- Fusion stereo with bluetooth
- wifi
- Hydraulic gangway
- Two refrigerators, freezer.
- Wine cellar

### **NAVIGATION & COMMUNICATION EQUIPMENT**

- Electronic volvo penta controls levers and trim tabs volvo interceptors with autotrim
- Joystick manouver Volvo Penta
- GPS Garmin
- Automatic Pilot Garmin
- Electronic volvo penta controls levers and trim tabs volvo interceptors with autotrim
- VHF

### **Accommodations**

3 Double cabins and 2 head with shower box, (owner's double cabin at the bow with ensuite head and 2 aft cabin sharing the guest head); large dinette with kitchen and table with sofà.

**Evo R 6**



**Evo\_R6**





Evo R 6 aerial photo



Evo\_R6\_Open\_Running-3



**Evo\_R6\_Open-6**



**Evo R 6 external dinette**





**internal dinette**



**Evo R 6 Owner's cabin**



8686648\_20230209080259336\_1\_XLARGE

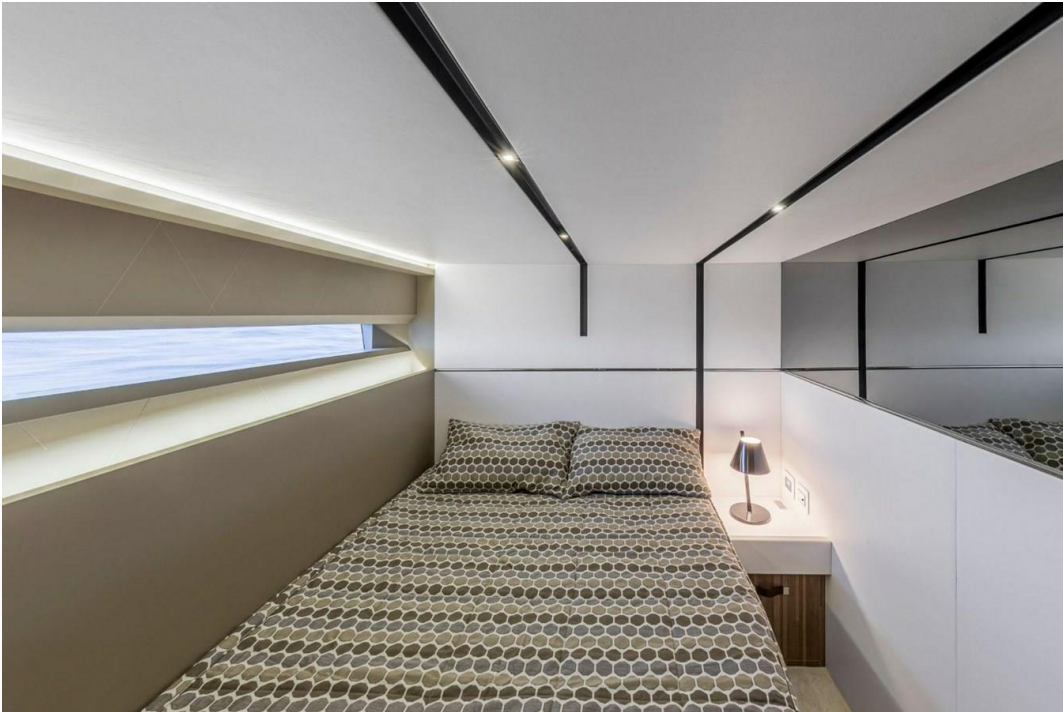


8686648\_20230209080257426\_1\_XLARGE





8686648\_20230209080301417\_1\_XLARGE



8686648\_20230209080255355\_1\_XLARGE

