



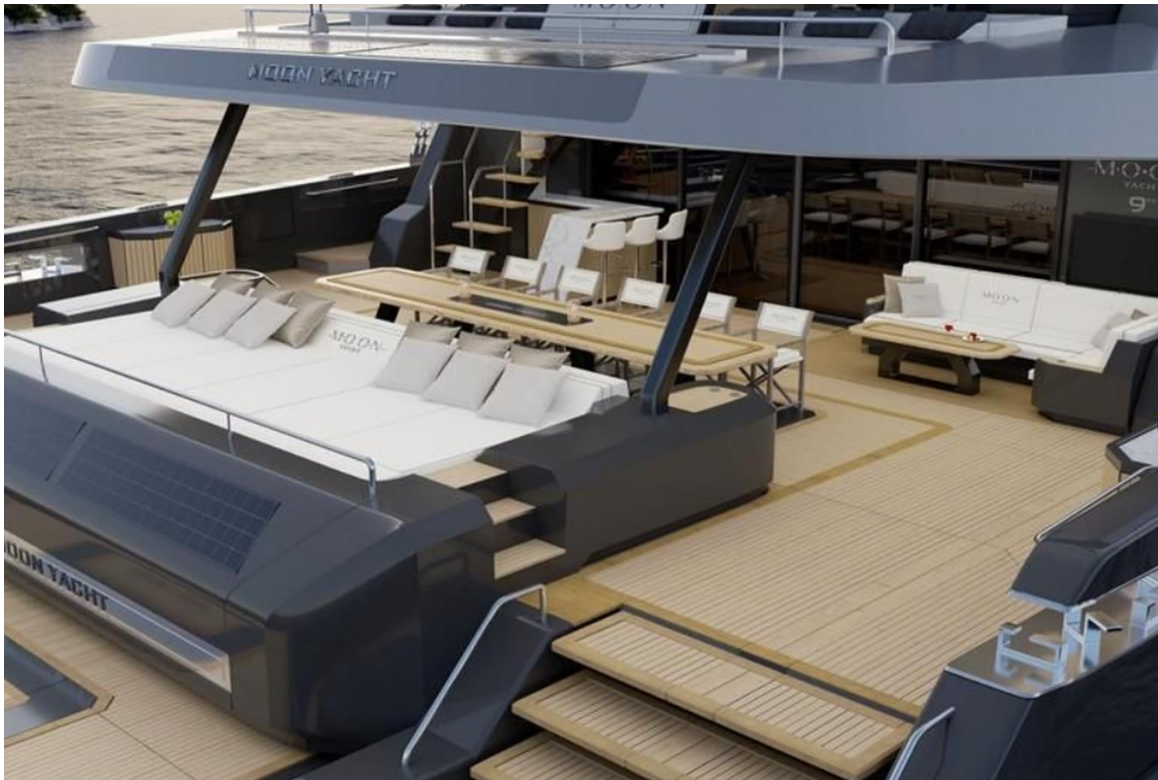
Type	Catamaran	Classification	--
Top	--	Class Type	--
Model	MOON 90 SAIL	Builder	MOON YACHTS
Manuf. Year	2025	Naval Architect	--
Refit Year	--	Interior Design	--
LOA	90' (27.43m)	Hull	Fiberglass
Beam	43' 8" (13.3m)	Deck	--
Draft Min/Max	-- / 9' 7" (2.9m)	Engines	2x, Cummins, 500 HP
GRT	--	Max Speed	--
Fuel	--	Cruise Speed	--
Water	--	Range	--
Flag	--	Accommodations	8 strms

ASKING PRICE: **\$7,700,000 USD**

2. 2025 Moon 90



3. 2025 Moon 90



4. 2025 Moon 90



5. 2025 Moon 90



6. 2025 Moon 90



7. 2025 Moon 90



8. 2025 Moon 90



HULL DECK AND SUPERSTRUCTURE

Side of hulls finished with lacquer, colour TBD

Superstructure and flybridge finished with lacquer, colour TBD

Colorless protecting film around mooring cleats, fairleads, lifting points

Aft Cockpit, side deck, forward cockpit and flybridge floors covered with synthetic teak

Glass panoramic windows (upgrade) in the saloon area

INTERIOR FINISH

Interior woodwork finished with HPL (premium colours) or selected timber

Floors covered with natural wood parquet

Bathrooms with quartz walls (premium colours) and premium HPL

Counter tops finished with quartz (premium colour)

Side panels and ceilings finished with synthetic leather and alcantara (special colours)

Natural leather accents

Illuminated wall in the bar island

Illuminated wardrobes interiors

UPHOLSTERY

Set of external cushions (aft cockpit, flybridge, forward cockpit)

Additional external cushions on forward cockpit

Set of decorative pillows (aft and forward cockpits flybridge)

Set of external covers (navigation station, tables, all cushions, bar island)

SAILS AND RIGGING

Black painted aluminium mast

Canoe boom with lazy jack and bag

Dyneema running rigging

Hydranet, fully battened mainsail

Hydranet genoa

Code zero

Electric main sail traveler controls

Electric furling system for Genua

Electric Furling system for Code Zero

Rigging for Code Zero/Gennaker

5 Electric winches

Lights under sailings

ENGINES

2x 500 HP Cummins diesel engines, V-drive

2x folding propellers

2x 8000L fuel tanks (diesel)

2x bow thruster (induction)
Additional engine throttles for docking in the aft cockpit
Additional engine throttles at the navigation station
Automatic fire extinguishing system in engine rooms
Water sensors for fuel filters
Fuel transfer system between tanks
Fuel filter bypass for each engines

DECK GEAR

Electric windlass 3500W
130kg Ultra Marine anchor with 120 m galvanized chain
Set of fixed mooring cleats,
Swimming ladder and shower with hot and cold
Hydraulic platform for tender up to 1200 kg
Additional anchor and windlass
Stainless steel front and rear doors
2 electric mooring winches in the aft (one on starboard, one on port side)
Boarding ladder
Hydraulic gangway
Garage for 2x jetski (jet ski not included)

ELECTRICAL SYSTEM

Premium batteries pack Lithium LiFePO4 120kWh
Includes 2 chargers/inverters 48V/15000W/200A to supply all Yacht systems
1x shore connection 125A
1x shore connection 63A
Additional battery chargers 4x100A
Power management system,
Generator auto start
2 Generator 25 kW
Semi automatic generator/shore connections switch
USB sockets in cabins in and saloon
Set of induction mobile phone chargers (2 in each cabin, 1 in navigation station, 1 at helm station)
Solar panels

PLUMBING

4000L fresh water tank
1500L black water tank
800L grey water tank
2 fresh water pump units

2x 120l electric water heaters

Electric toilets with fresh water flush

4 electric bilge pumps

Additional Bilge pump system (double independent system)

2 manual bilge pumps

Fresh water shore connection with automatic tank refuelling

High water level alarm

Water maker 200-250 L/h - 230V

High pressure water pump for deck washing

Fuel level indicator near fuel inlet

LIGHTS

LED navigation lights

Deck light

LED interior lights in ceiling panels

LED lights in the ceiling panels in the aft cockpit

Interior Ambience Pack - indirect lights in the saloon and cabins

Exterior Ambience Pack - indirect lights in aft cockpit, skirts, side decks, forward cockpit, forward deck deck and flybridge

16x Under water lights RGBW

Backlit boat's name

Dimmers for interior and cockpit lights

COMFORT ON BOARD

Mechanical ventilation system in cabins

Air conditioning system 220V, CHILER system 200.000 BTU

JL AUDIO Radio/USB/BLUETOOTH Player with 4 speakers and 2 subwoofers in the saloon, 4 speakers and 2 subwoofers on the flybridge, 4 speakers and 1 subwoofer in the aft cockpit, 4 speakers in the forward cockpit

4x audio starring pilot

Mechanical ventilation system in cabins

Air conditioning system 220V with central chiller 200.000 BTU

JL AUDIO Radio/USB/BLUETOOTH Player with 4 speakers and 2 subwoofers in the saloon, 4 speakers and 2 subwoofers on the flybridge, 4 speakers and 1 subwoofer in the aft cockpit, 4 speakers in the forward cockpit

4x audio starring pilot

1x Wiper with washer on window next to navigation station on main deck

GALLEY

2 side by side refrigerators

1 freezer

Induction stove
Electric Oven with microwave function
2x Dishwasher
Washing machine
Separate dryer
Dinette for crew
TV screen
High and low storage and lockers

SALOON

Glass panoramic windows
Electric blinds on windows
Blinds on entrance door
Set of lounge sofas and armchairs
Coffee table
Dinning table
Set of dinning chairs
Bar with refrigerator, ice maker, induction stove, sink and storage
Wine cooler
65" TV Screen with electric lifting system
Office area (desk, chair, storage)
Navigation station with skippers seat and controls

CABINS

All beds 200x180cm with premium mattresses
Manual blinds on side windows and hatches
TV screen with sound bar
Large wardrobes and cabinets
Vanity/working desk in master's and VIP cabins
Openable portlight

COCKPIT

Large sofa
Fixed dinning table
Set of dinning chairs
Lounge sofa
Fixed coffee table
Bar module with refrigerator, ice maker,, sink, storage
Bar stools
Day head with electric toilet and washbasin

FLYBRIDGE

Laminated hard top with integrated lights
2 large sofas
2 fixed coffee tables
Bar with sink, refrigerator, ice maker and storage
Set of large sunbathing mattresses
Jacuzzi for 4 persons
Two steering stations with set of controls

NAVIGATION & ELECTRONICS

3 chart plotters 12" (navigation station)
4 chart plotters 16" (flybridge)
3 i70S instruments (1x navigation station, 2x flybridge)
Autopilot
AIS Transceiver
VHF with dual station (navigation station and helm station)
VHF in crew area
Radar
Smart Boat system
Fishfinder
2 parking cameras
2 cameras in engine rooms (one in each)
TV antenna (terrestrial)
5G/LTE Wifi worldwide, modem, router and antenna
Air horn

SAFETY EQUIPMENT

Complete rescue equipment for 15 persons
EPIRB
SART

COMMISSIONING

Antifouling with epoxy primer + Propospeed +Lightspeed
6 mooring lines, 10 inflatable fenders with fender socks
Launching
Moon Yacht representative for first 3 days of delivery